

FOR LEASE OFFICE



SCOTT'S VIEW

1402 ROSENEATH RD | RICHMOND, VA

1,521 SF AVAILABLE



**CUSHMAN &
WAKEFIELD**

THALHIMER

PROPERTY HIGHLIGHTS



SF

1,521 SF



OFFICE FEATURES

- Glass front private offices with sliding doors
- Architectural lighting
- Expansive window line overlooking bustling Scott's Addition
- Modern, open conference area
- Well-appointed kitchenette



BUILDING AMENITIES

- Street front exposure and signage opportunities



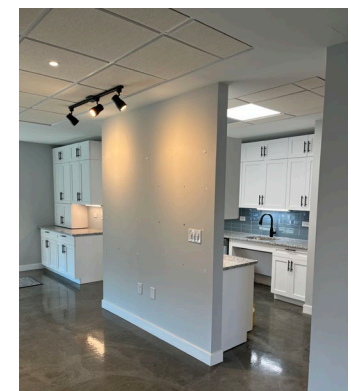
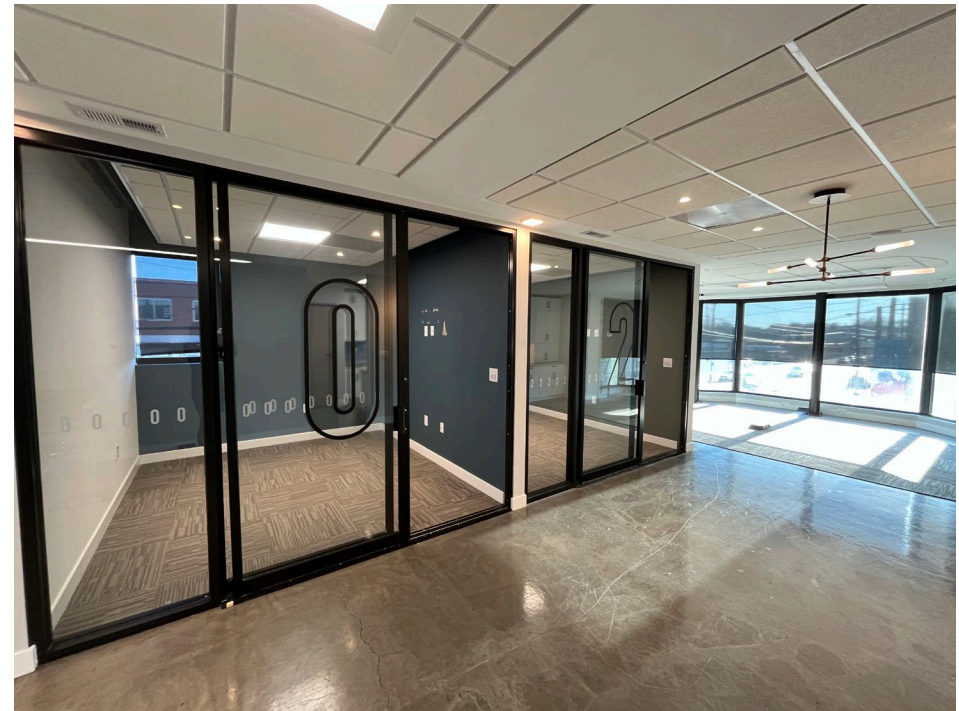
PARKING

- Excellent parking, direct access from parking deck

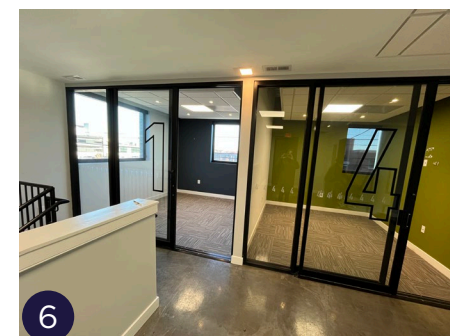
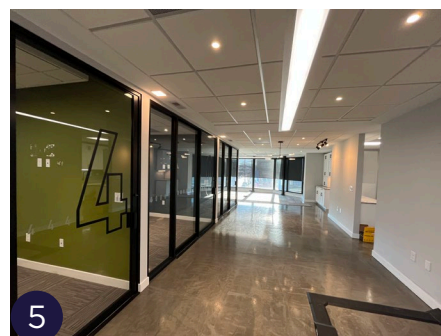
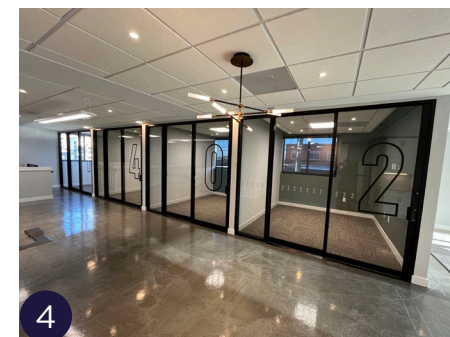
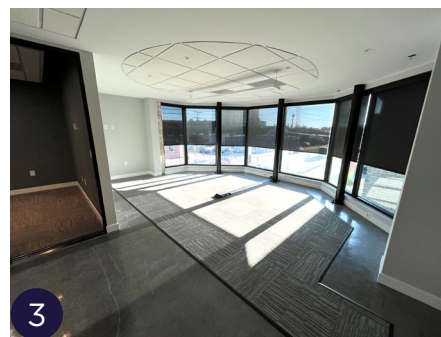
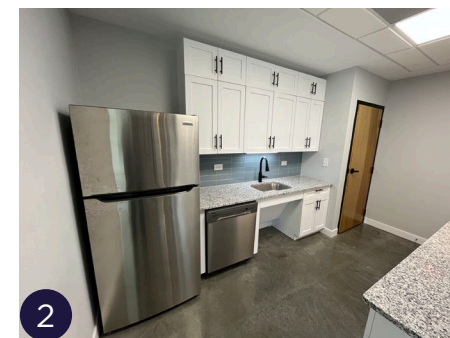
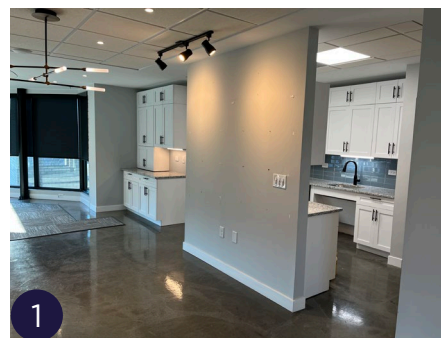


LOCATION

- Located at the gateway to Scott's Addition
- Roseneath & West Clay Street



SCOTT'S VIEW



CONTACT INFORMATION

AMY BRODERICK

Senior Vice President
804 344 7189
amy.broderick@thalhimer.com

KATE HOSKO

Vice President
804 344 7169
kate.hosko@thalhimer.com



**CUSHMAN &
WAKEFIELD**

THALHIMER

Thalhimer Center
11100 W. Broad Street
Glen Allen, VA 23060
thalhimer.com

Independently Owned and Operated / A Member of the Cushman & Wakefield Alliance

Cushman & Wakefield | Thalhimer © 2025. No warranty or representation, express or implied, is made to the accuracy or completeness of the information contained herein, and same is submitted subject to errors, omissions, change of price, rental or other conditions, withdrawal without notice, and to any special listing conditions imposed by the property owner(s). As applicable, we make no representation as to the condition of the property (or properties) in question.