

FOR LEASE

# 511 N. MEADOW STREET

RICHMOND, VA 23220



CUSHMAN &  
WAKEFIELD

THALHIMER

**2,890 SF AVAILABLE NOW**

CREATIVE  
OFFICE/RETAIL SPACE  
IN THE FAN DISTRICT

# PROPERTY FEATURES

- **2,890 SF CREATIVE OFFICE OR RETAIL IN THE FAN**
- Street front exposure & signage opportunity
- Tall ceilings & excellent natural light
- New hardwood floors
- Good mix of open area & private offices
- Onsite parking available
- Walking distance to restaurants & Whole Foods

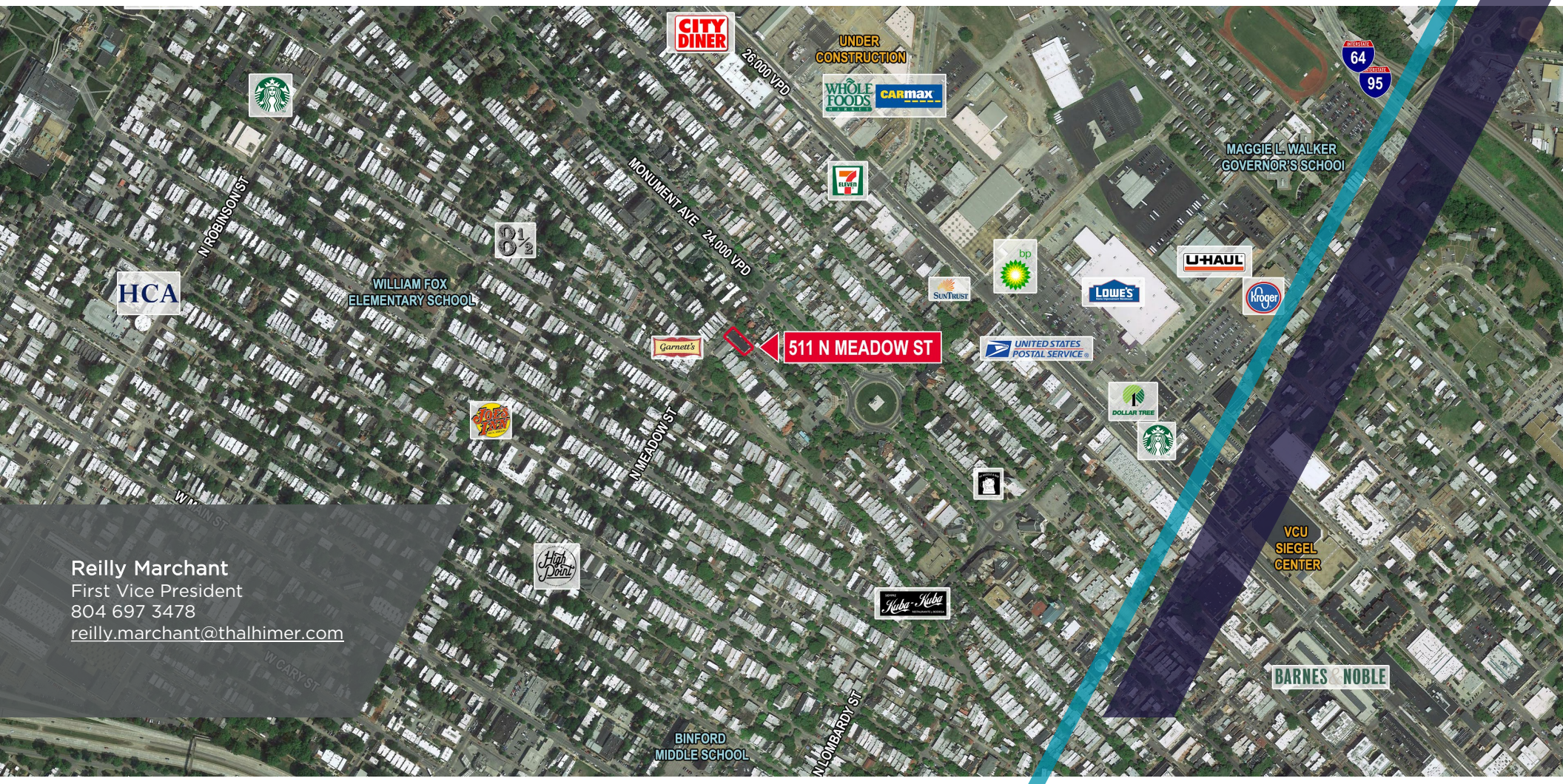
## WALK TO NEARBY AMENITIES



## DEMOGRAPHICS

	1 Mile	3 Miles	5 Miles
Population	30,995	134,181	270,958
No. of Households	14,511	65,507	123,940
Avg. HH Income	\$107,052	\$95,119	\$90,683
Daytime Population	47,485	219,110	356,202





Reilly Marchant  
First Vice President  
804 697 3478  
[reilly.marchant@thalhimer.com](mailto:reilly.marchant@thalhimer.com)

Independently Owned and Operated / A Member of the Cushman & Wakefield Alliance

Cushman & Wakefield | Thalhimer © 2025. No warranty or representation, express or implied, is made to the accuracy or completeness of the information contained herein, and same is submitted subject to errors, omissions, change of price, rental or other conditions, withdrawal without notice, and to any special listing conditions imposed by the property owner(s). As applicable, we make no representation as to the condition of the property (or properties) in question.