

FOR SUBLEASE **OFFICE**

VIRTUAL TOUR



1051 CARE WAY

**COWAN PROFESSIONAL PARK
FREDERICKSBURG, VIRGINIA 22401**

OFFICE SUITE FOR SUBLEASE



THALHIMER

PROPERTY HIGHLIGHTS

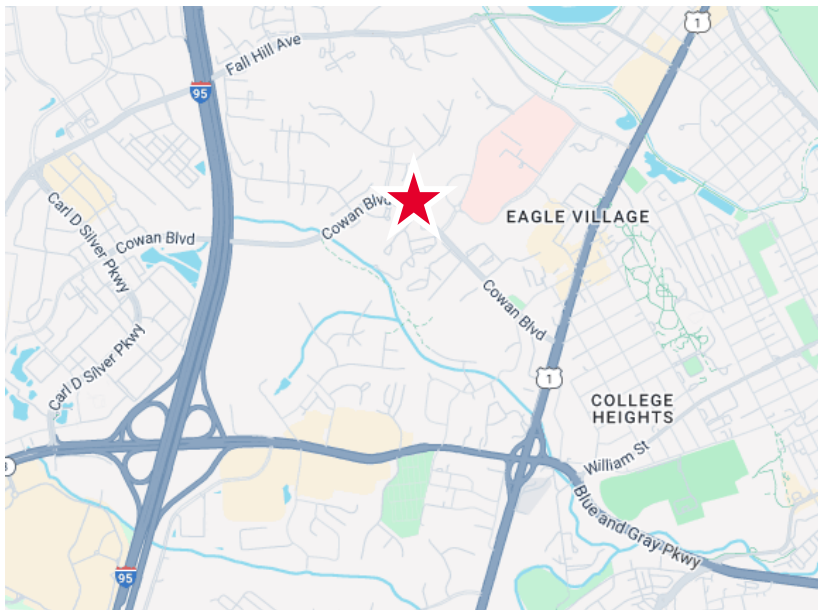
- Medical Office
- Move-in Ready for Physical Therapy
- Directly Adjacent to Mary Washington Hospital Campus
- Great Walkability with Several Restaurant and Stores off Cowan Boulevard and in Nearby Central Park

Available SF	Suite 200 - 3,208 SF
--------------	----------------------

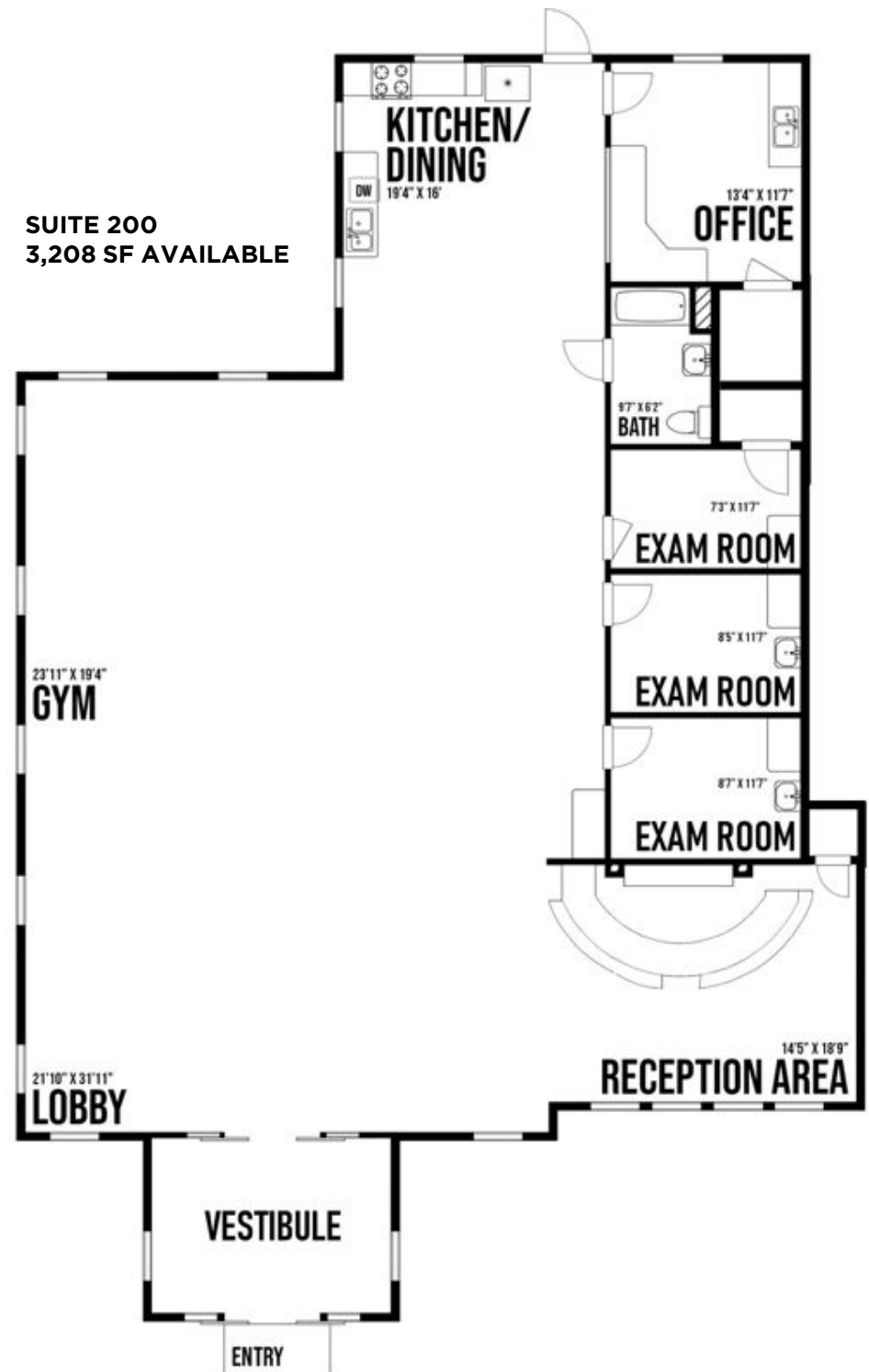
Lease Type	Sublease
------------	----------

Lease Rate	\$20.00 PSF, NNN
------------	------------------

Timing	Immediate
--------	-----------



SUITE 200
3,208 SF AVAILABLE





AERIAL

CONTACT INFORMATION

JAMIE SCULLY, CCIM

Senior Vice President

540 322 4140

jamie.scully@thalhimer.com



**CUSHMAN &
WAKEFIELD**

THALHIMER

Eagle Village
1125 Emancipation Hwy., Suite 350
Fredericksburg, VA 22401
thalhimer.com

Independently Owned and Operated / A Member of the Cushman & Wakefield Alliance

Cushman & Wakefield | Thalhimer © 2025. No warranty or representation, express or implied, is made to the accuracy or completeness of the information contained herein, and same is submitted subject to errors, omissions, change of price, rental or other conditions, withdrawal without notice, and to any special listing conditions imposed by the property owner(s). As applicable, we make no representation as to the condition of the property (or properties) in question.