

438 MCLAWS CIRCLE

Williamsburg, Virginia

10,000 SF SPACE AVAILABLE | FOR LEASE

Property Features

- Suite 100 (7,000 SF) and Suite 101 (3,000 SF) available
- Suites can be combined for a total of 10,000 SF
- Stand-alone building for lease: \$17.50/SF, modified gross
- Offering a functional floor plan design with a combination of large private offices and collaboration area
- A bright space with high ceiling and generous natural light
- Unique feature of a dock-high loading available at the rear of the building
- Located with close proximity to Kingsmill Golf Resort, Riverside Doctor's Hospital and Quarterpath mixed-use development
- Less than 2 miles from I-64 at Exit #242
- Exterior building signage available



438 MCLAWS CIRCLE

Williamsburg, Virginia

SPACE PLAN

10,000 SF SPACE AVAILABLE | FOR LEASE

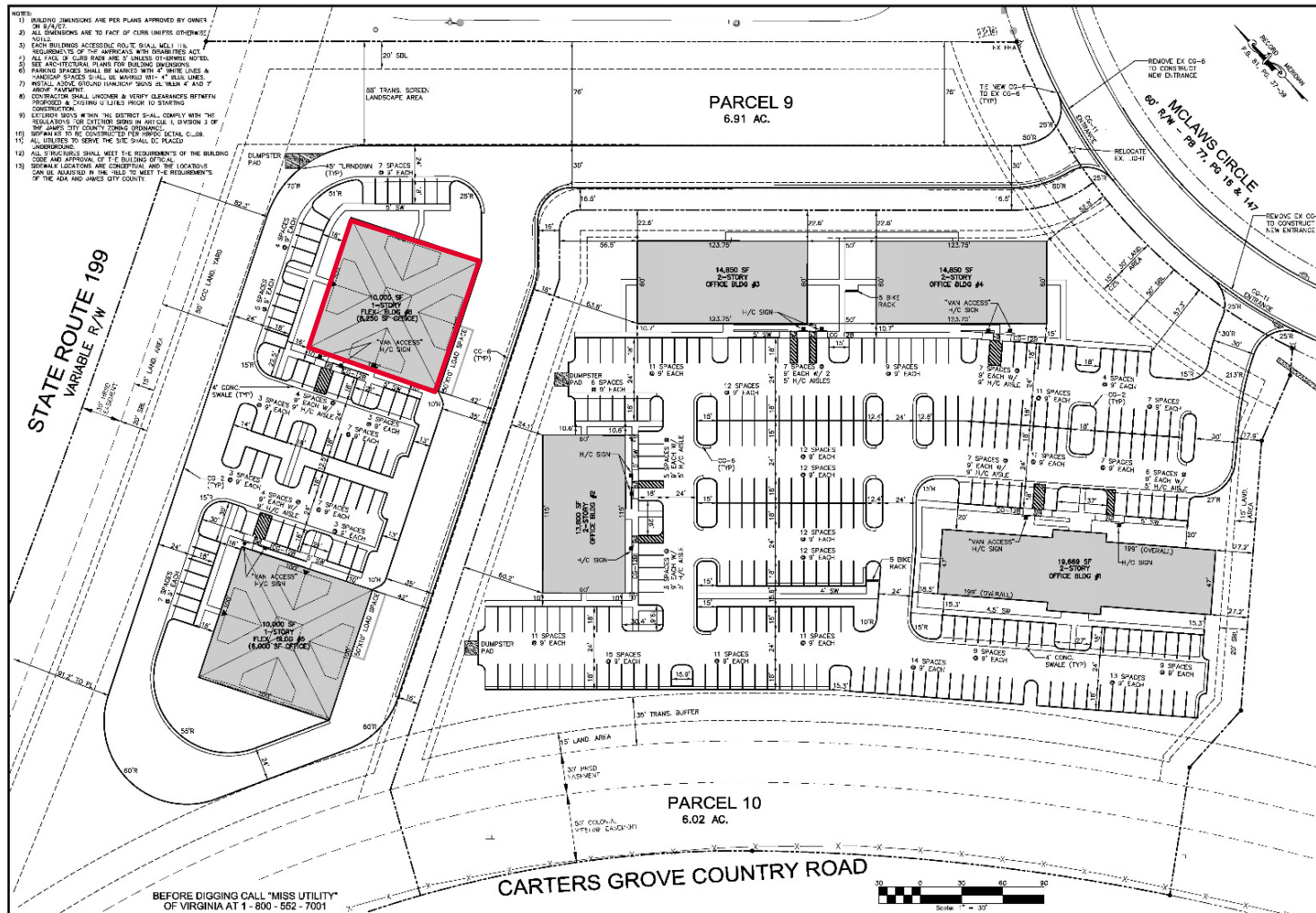


438 MCLAWS CIRCLE

Williamsburg, Virginia

SITE PLAN

10,000 SF SPACE AVAILABLE | FOR LEASE



438 MCLAWS CIRCLE

Williamsburg, VA

For more information, please contact:

Andy Dallas, CCIM, SIOR | andy.dallas@thalhimer.com | 757 873 3661
Robert L. Phillips, Jr., SIOR | bobby.phillips@thalhimer.com | 757 873 4124



One BayPort Way
Suite 100
Newport News, VA 23606
thalhimer.com

Independently Owned and Operated / A Member of the Cushman & Wakefield Alliance

Cushman & Wakefield | Thalhimer © 2025. No warranty or representation, express or implied, is made to the accuracy or completeness of the information contained herein, and same is submitted subject to errors, omissions, change of price, rental or other conditions, withdrawal without notice, and to any special listing conditions imposed by the property owner(s). As applicable, we make no representation as to the condition of the property (or properties) in question.