

FOR LEASE

# JACKSON CENTER

501 N. 2<sup>ND</sup> STREET / RICHMOND, VA



CUSHMAN &  
WAKEFIELD

**THALHIMER**

**AVAILABLE IMMEDIATELY**

3,383 RSF & 13,787 RSF

UP TO 17,710 RSF  
AVAILABLE



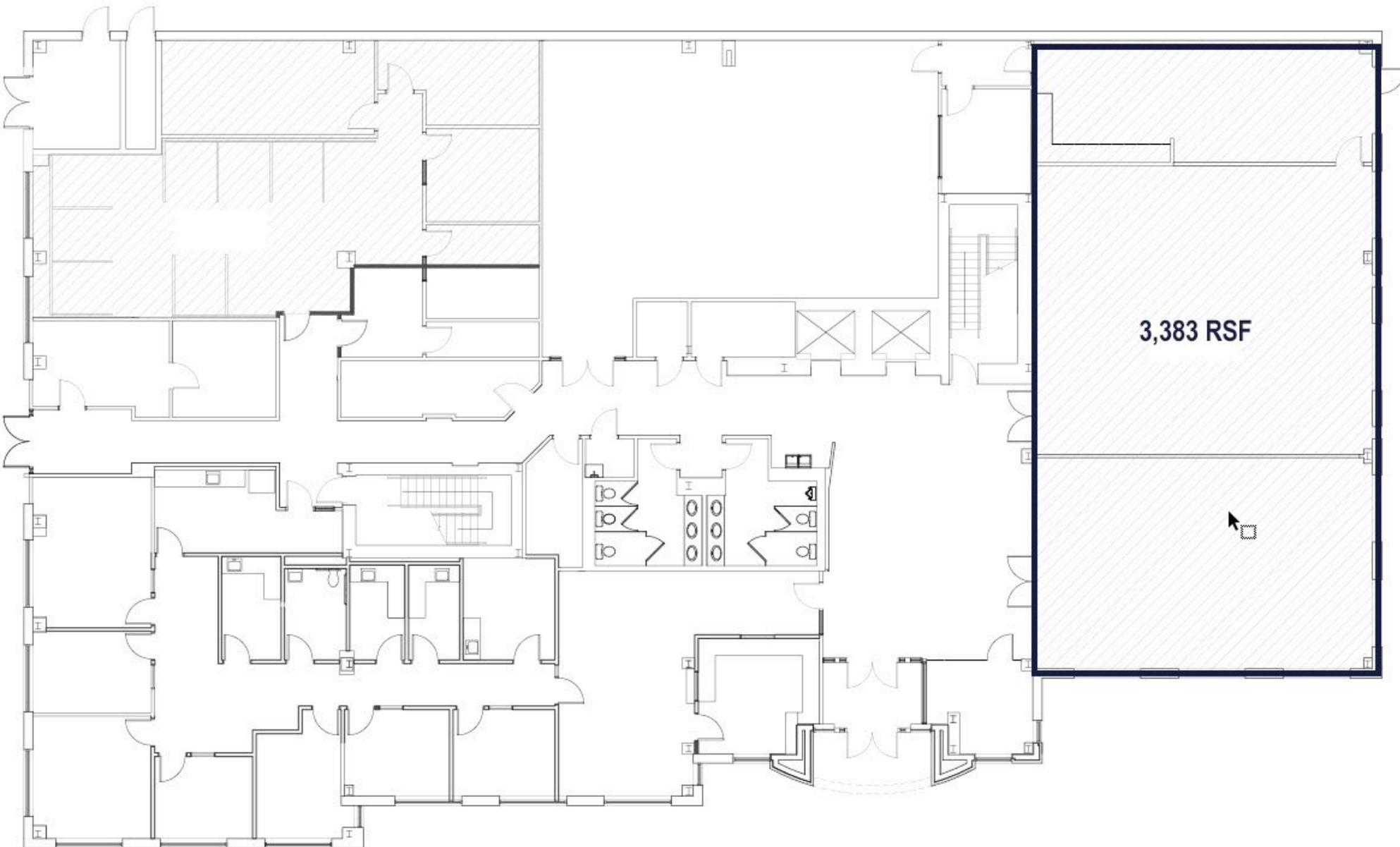
# PROPERTY FEATURES



- **FOR LEASE UP TO 17,170 RSF AVAILABLE**
- First Floor - 3,383 RSF
- Second Floor - 13,787 RSF
- Available immediately
- Limited onsite parking

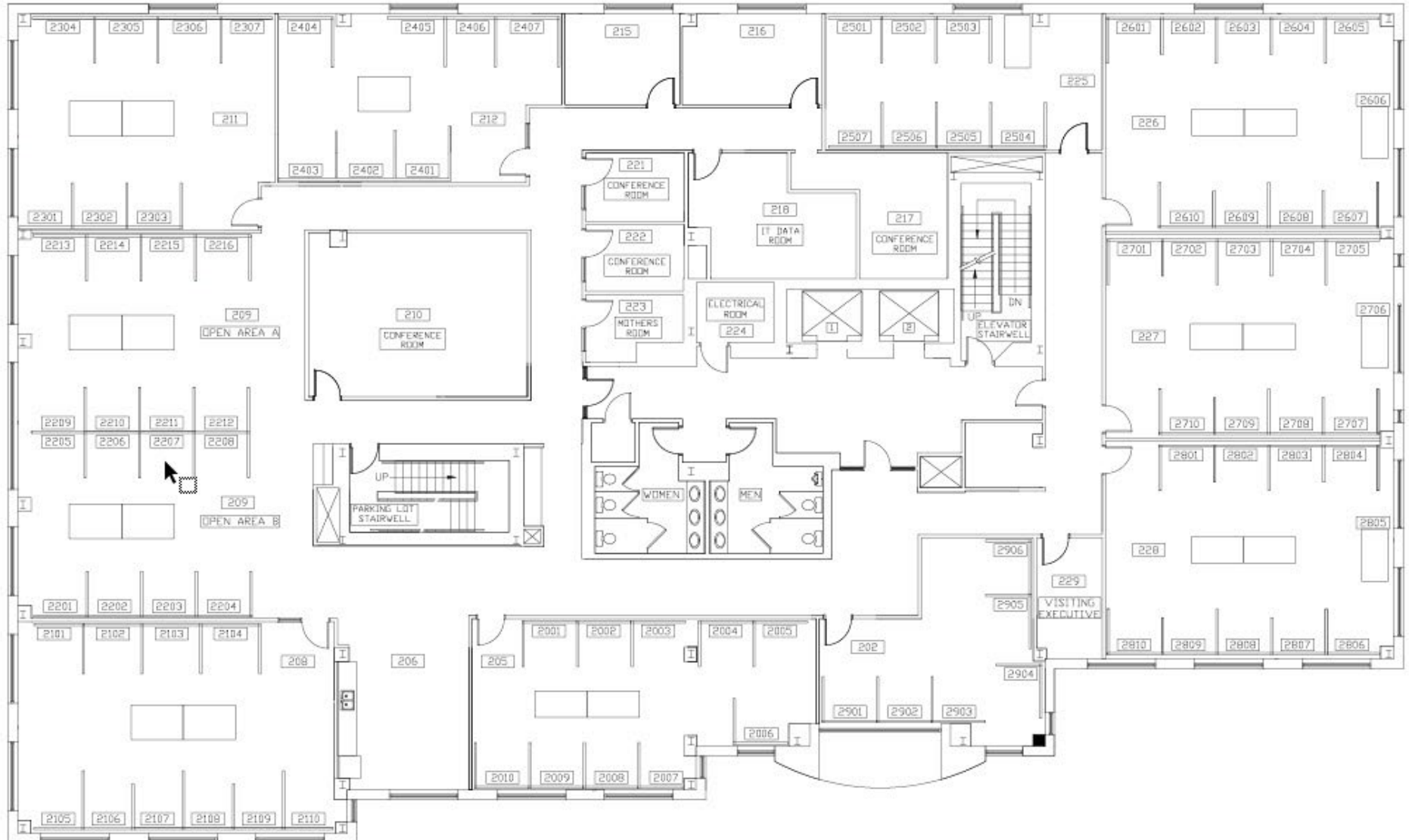
# SUITE FLOOR PLAN

Floor Plan | Suite 100 | First Floor  
3,383 RSF



# SUITE FLOOR PLAN

Floor Plan | Suite 200 | Second Floor Lobby  
13,787 RSF – entire floor





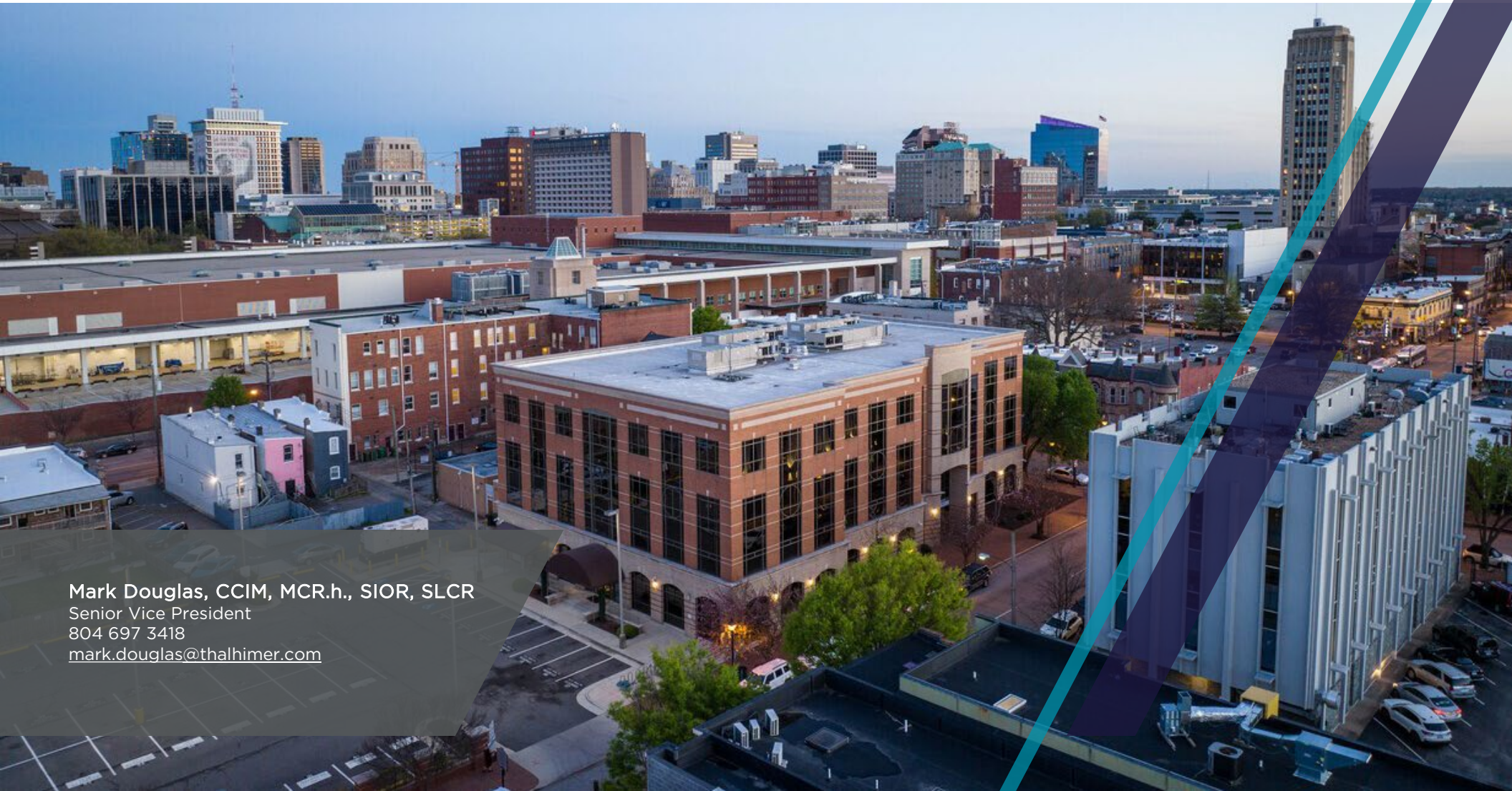
This aerial map of downtown Richmond, Virginia, provides a detailed view of the city's urban landscape. Major transportation corridors, including Interstate 95 (I-95) and Interstate 64 (I-64), are clearly visible at the top. The map highlights a dense network of streets, with major thoroughfares like W. Leigh St, E. Clay St, N. Adams St, and the Downtown Expressway. Key landmarks and buildings are labeled, including the Virginia State Capitol, the Jackson Center, the Commonwealth of Virginia Office Buildings, and the VCU School of Business. The map also identifies numerous commercial and residential areas, such as Monroe Park, Biotechnology Park, and the Riverfront Plaza. Various businesses, hotels, and public facilities are marked with logos and names, providing a comprehensive overview of the city's infrastructure and urban environment.





# THALHIMER

Thalhimer Center  
11100 W. Broad Street  
Glen Allen, VA 23060  
[thalhimer.com](http://thalhimer.com)



Mark Douglas, CCIM, MCR.h., SIOR, SLCR  
Senior Vice President  
804 697 3418  
[mark.douglas@thalhimer.com](mailto:mark.douglas@thalhimer.com)

Independently Owned and Operated / A Member of the Cushman & Wakefield Alliance

Cushman & Wakefield | Thalhimer © 2025. No warranty or representation, express or implied, is made to the accuracy or completeness of the information contained herein, and same is submitted subject to errors, omissions, change of price, rental or other conditions, withdrawal without notice, and to any special listing conditions imposed by the property owner(s). As applicable, we make no representation as to the condition of the property (or properties) in question.