

A photograph of a two-story red brick building with a flat roof. A red sign with the word "Gilbane" in white is mounted above the entrance. The entrance has a small concrete porch. To the right of the entrance is a large window with multiple panes. The building is set against a clear blue sky. A small tree is in the foreground on the left.

Gilbane

FOR LEASE

3435 W. LEIGH STREET

RICHMOND, VIRGINIA



CUSHMAN &
WAKEFIELD

THALHIMER

3435 W. LEIGH STREET

Richmond, Virginia



AVAILABILITY

4,205
AVAILABLE 9/1/2025



PROPERTY FEATURES

MOVE-IN READY
SKYLIGHTS, EXPOSED CEILINGS, CONCRETE
FLOORS
STREETFRONT ENTRY



SPACE FEATURES

GLASS FRONT OFFICES
WELCOMING RECEPTION AREA
TWO CONFERENCE ROOMS
OPEN AREA FOR COLLABORATION AND/OR
WORKSTATIONS



EXCELLENT SIGNAGE

BUILDING SIGNAGE OPPORTUNITY

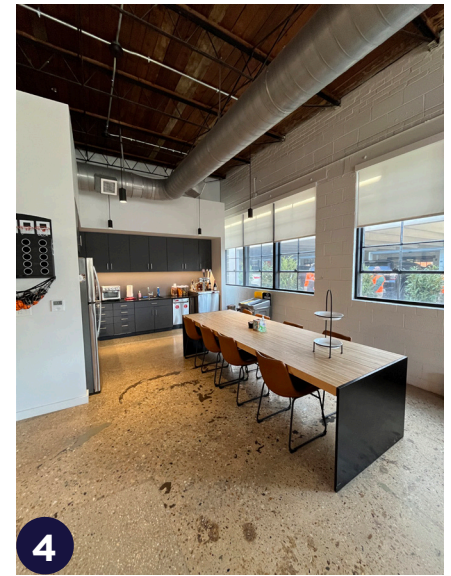
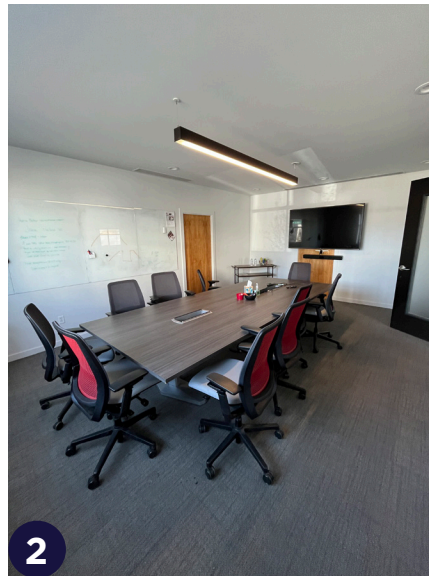
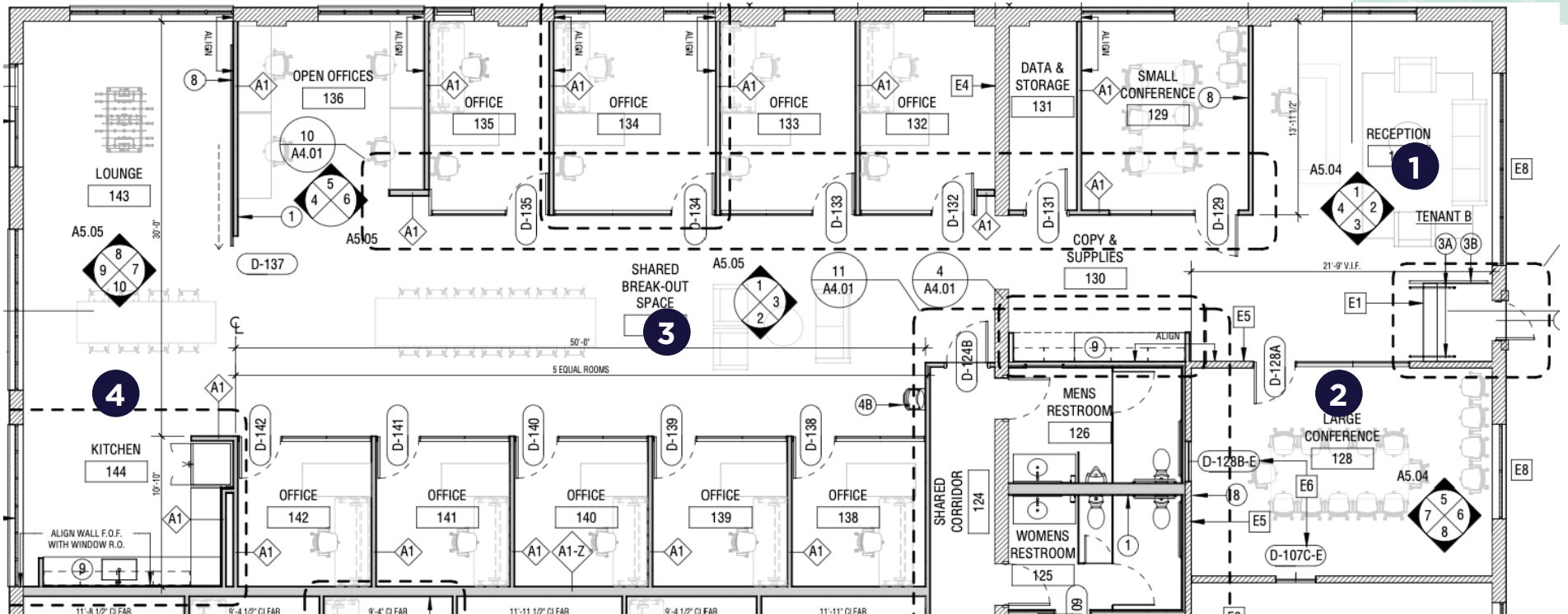


PARKING

OFF STREET, SURFACE, AND PARKING DECK



3435 W. LEIGH STREET FLOOR PLAN



3435 W. LEIGH STREET AERIAL



FOR MORE INFORMATION, CONTACT:

AMY BRODERICK

Senior Vice President

804 344 7189

amy.broderick@thalhimer.com

KATE HOSKO

Vice President

804 344 7169

kate.hosko@thalhimer.com

Thalhimer Center
111100 W. Broad Street
Glen Allen, VA 23060
thalhimer.com



**CUSHMAN &
WAKEFIELD**

THALHIMER

Independently Owned and Operated / A Member of the Cushman & Wakefield Alliance

Cushman & Wakefield | Thalhimer © 2025. No warranty or representation, express or implied, is made to the accuracy or completeness of the information contained herein, and same is submitted subject to errors, omissions, change of price, rental or other conditions, withdrawal without notice, and to any special listing conditions imposed by the property owner(s). As applicable, we make no representation as to the condition of the property (or properties) in question.