

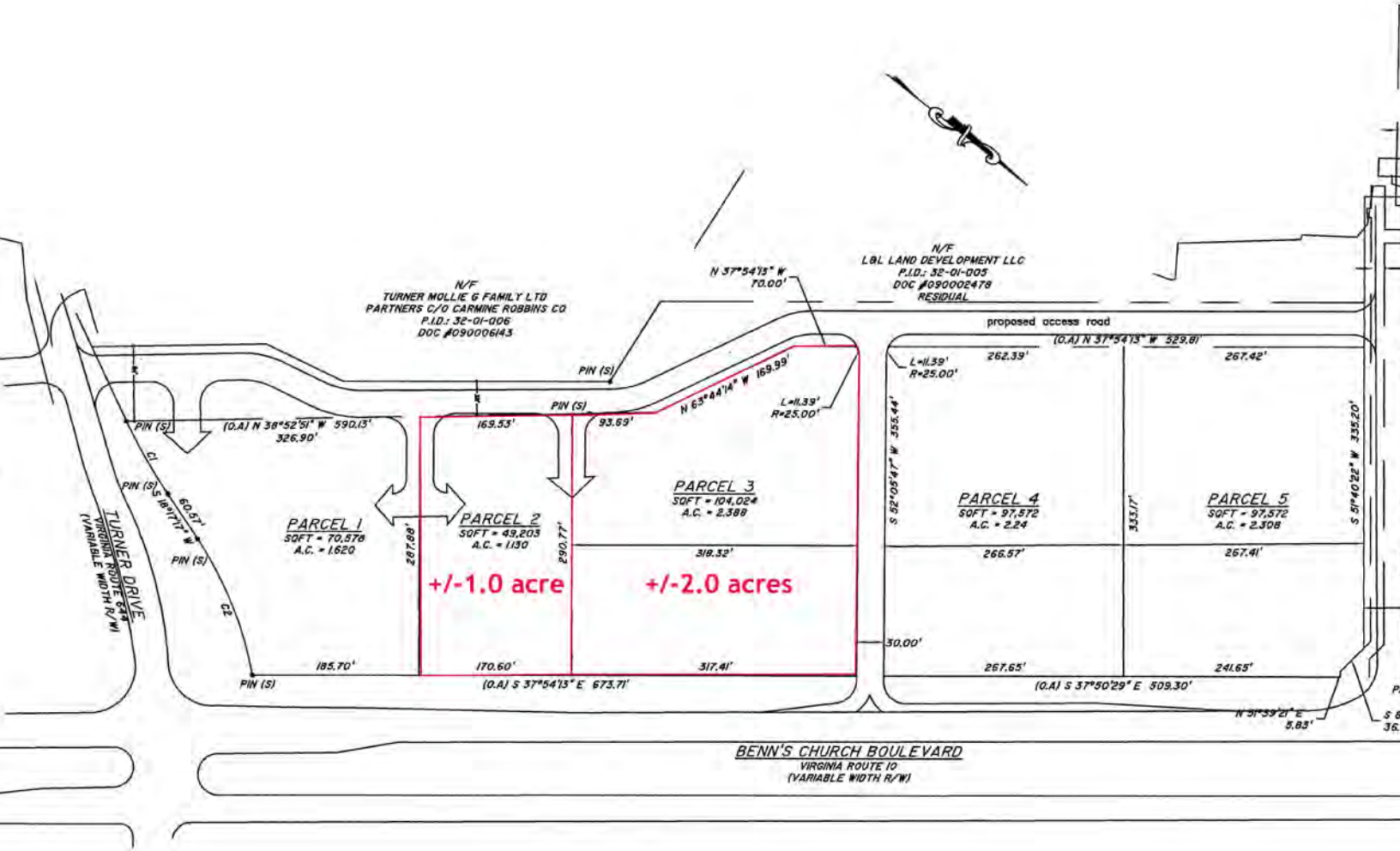
### Property Features

- Targeted in comprehensive plan for commercial and residential uses
- All utilities along the roads bordering the property
- 23,000 VPD
- Average Household Income (3 miles): \$134,880
- Two Parcels Available:
  - Parcel 2: ±1.0 acres
  - Parcel 3: ±2.0 acres
- Frontage on Route 10 and proposed access road
- Access road from Tractor Supply to Turner Drive being planned

For more information, contact:

**BOB THORNTON, CCIM, CRE, SIOR**  
 Senior Vice President  
 757 499 0583  
 bob.thornton@thalhimer.com

The Town Center of Virginia Beach  
 222 Central Park Ave., Suite 1500  
 Virginia Beach, VA 23462  
 www.thalhimer.com

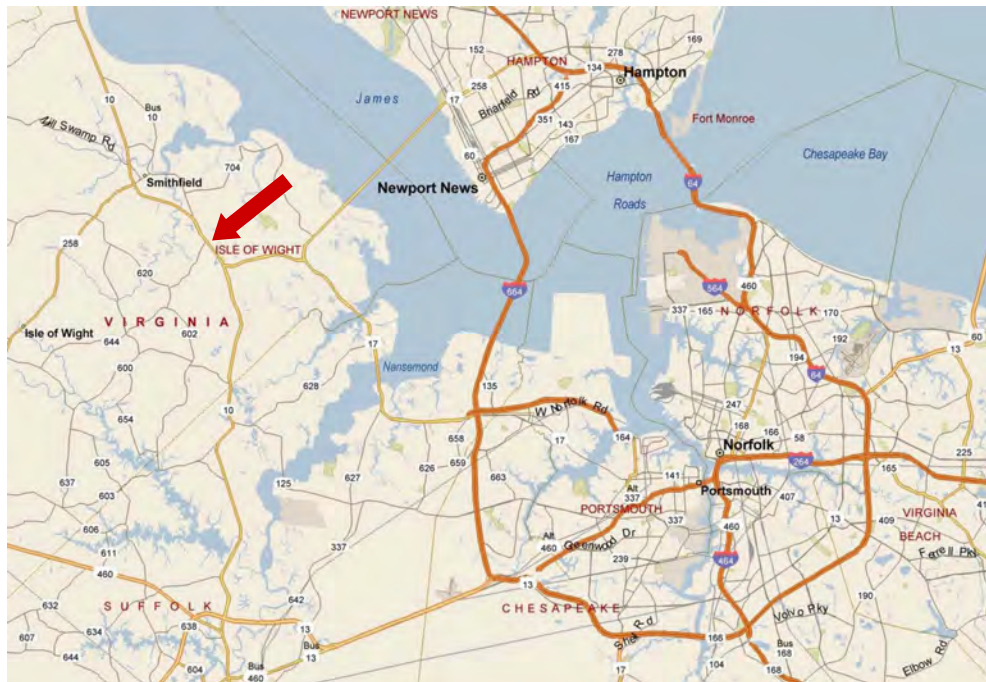
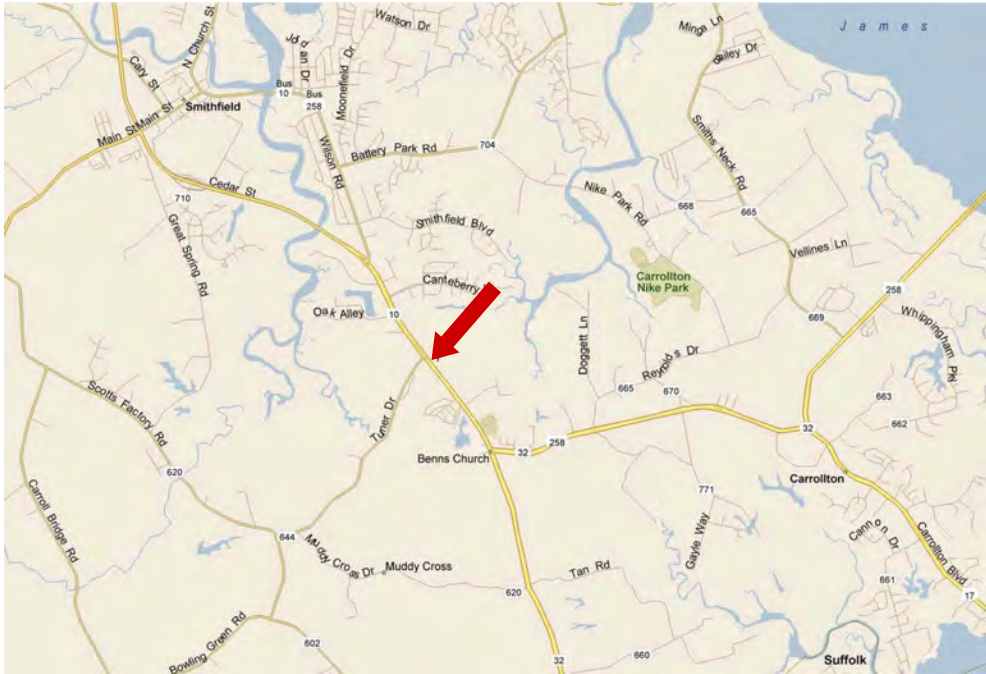


For more information, contact:

**BOB THORNTON, CCIM, CRE, SIOR**  
 Senior Vice President  
 757 499 0583  
 bob.thornton@thalhimer.com

The Town Center of Virginia Beach  
 222 Central Park Ave., Suite 1500  
 Virginia Beach, VA 23462  
 www.thalhimer.com

**RETAIL LAND FOR SALE**  
**Benns Church Boulevard**  
 Isle of Wight, VA 23430



For more information, contact:

**BOB THORNTON, CCIM, CRE, SIOR**  
 Senior Vice President  
 757 499 0583  
[bob.thornton@thalhimer.com](mailto:bob.thornton@thalhimer.com)

The Town Center of Virginia Beach  
 222 Central Park Ave., Suite 1500  
 Virginia Beach, VA 23462  
[www.thalhimer.com](http://www.thalhimer.com)

*Independently Owned and Operated / A Member of the Cushman & Wakefield Alliance*

*Cushman & Wakefield / Thalhimer © 2015. No warranty or representation, expressed or implied, is made to the accuracy or completeness of the information contained herein, and same is submitted subject to errors, omissions, change of price, rental or other conditions, withdrawal without notice, and to any special listing conditions imposed by the property owner(s). As applicable, we make no representation as to the condition of the property (or properties) in question.*