



EXECUTIVE TOWER

2101 **EXECUTIVE
DRIVE**

Hampton, VA
23666



PROPERTY PHOTOS



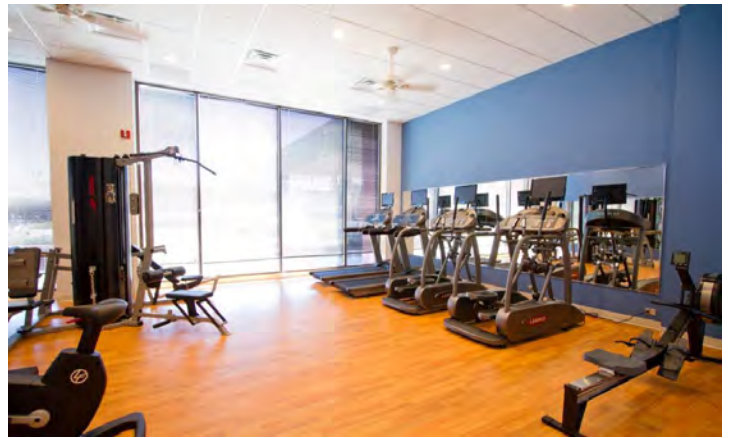
BUILDING DIRECTORY



LOBBY



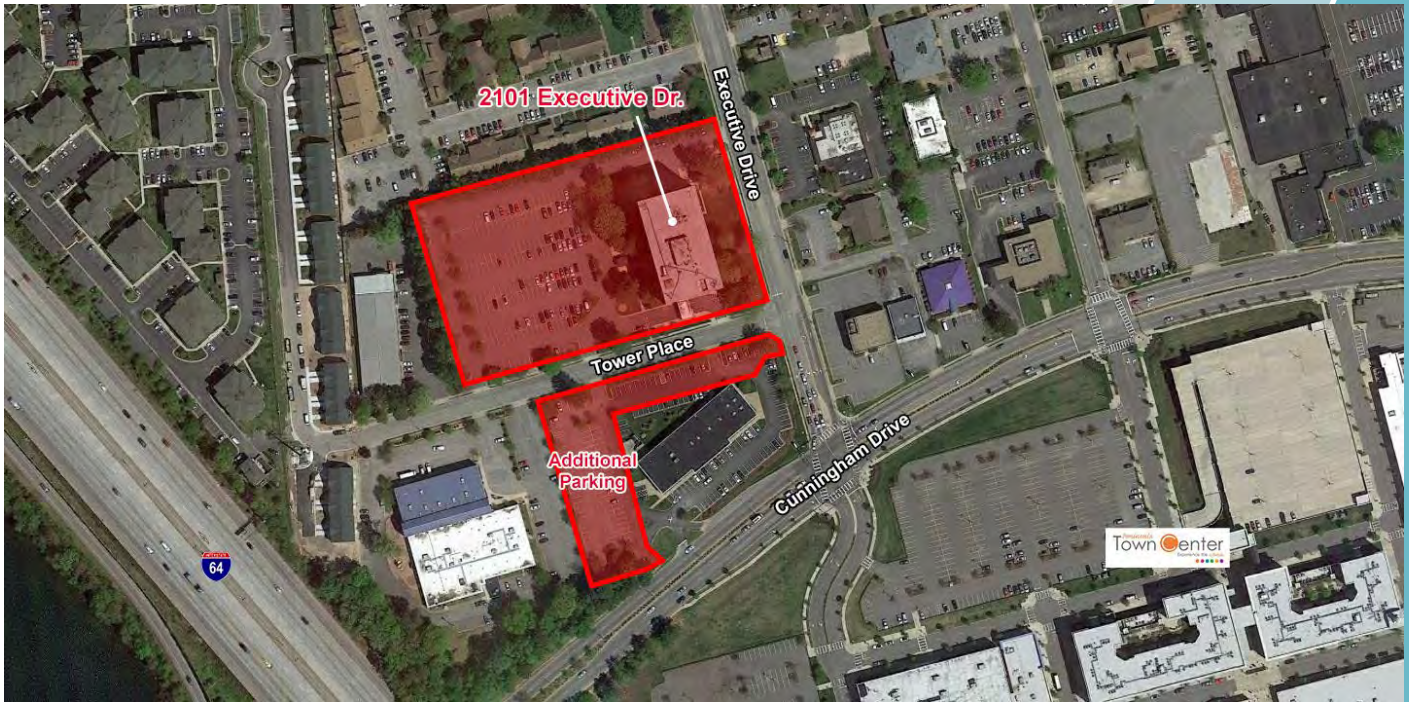
CONFERENCE ROOM



FITNESS CENTER

PROPERTY FEATURES

- 135,853 RSF eight story office building
- Suites available from approximately 1,200 SF and larger
- Multiple office configurations available
- Lease Rate: \$18.50 psf
- Adjacent to and highly visible from I-64
- Located in the Coliseum Central commercial district
- Close to the Hampton Coliseum, Hampton Roads Convention Center, Peninsula Town Center and the Power Plant of Hampton Roads
- Ample surface parking in lot & adjacent lot
- Amenities include Tenant fitness center and conference center



Teresa Nettles

Senior Vice President

757 873 9268

teresa.nettles@thalhimer.com

One BayPort Way
Suite 100
Newport News, VA 23606
Thalhimer.com



**CUSHMAN &
WAKEFIELD**

THALHIMER

Independently Owned and Operated / A Member of the Cushman & Wakefield Alliance

Cushman & Wakefield | Thalhimer © 2025. No warranty or representation, express or implied, is made to the accuracy or completeness of the information contained herein, and same is submitted subject to errors, omissions, change of price, rental or other conditions, withdrawal without notice, and to any special listing conditions imposed by the property owner(s). As applicable, we make no representation as to the condition of the property (or properties) in question.