

FOR LEASE
OFFICE



EAST SHORE III

140 EASTSHORE DRIVE | HENRICO COUNTY, VA

LAKEFRONT WITH WALKING TRAIL & OUTDOOR PATIOS



Owned & Managed by:



**CUSHMAN &
WAKEFIELD**

THALHIMER

PROPERTY HIGHLIGHTS

- Three-story Class A office building
- Lakefront building with access to walking/jogging trails and outdoor patios
- Upscale lobby & restroom finishes
- Full-service fitness center and tenant lounge located on-site
- Easily accessible from the I-64/I-295 interchange
- Nearby amenities include Starbucks, Publix, Chipotle, & many more!

Specifications

Total Size	75,646 SF
Available SF	Suite 110 - 4,862 RSF <i>Furniture Available</i> Suite 220 - 4,519 RSF Suite 320 - 4,730 RSF
Rental Rate	\$24.50 PSF, full service
Parking	4.15 per 1,000 SF
Management	On-site
Lighting	LED lighting throughout

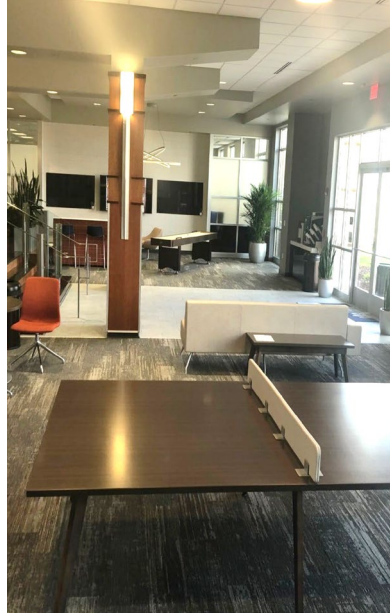


Owned & Managed by:



TENANT LOUNGE

- Big screen TV
- Whiteboards
- Outdoor seating
- Shuffleboard
- Coffee Station
- Common area conference table



Towel Station

CANCEL YOUR GYM MEMBERSHIP!

- **3,100 SF onsite fitness center**
- 18 stations
- Free weights
- Showers, lockers & towel service



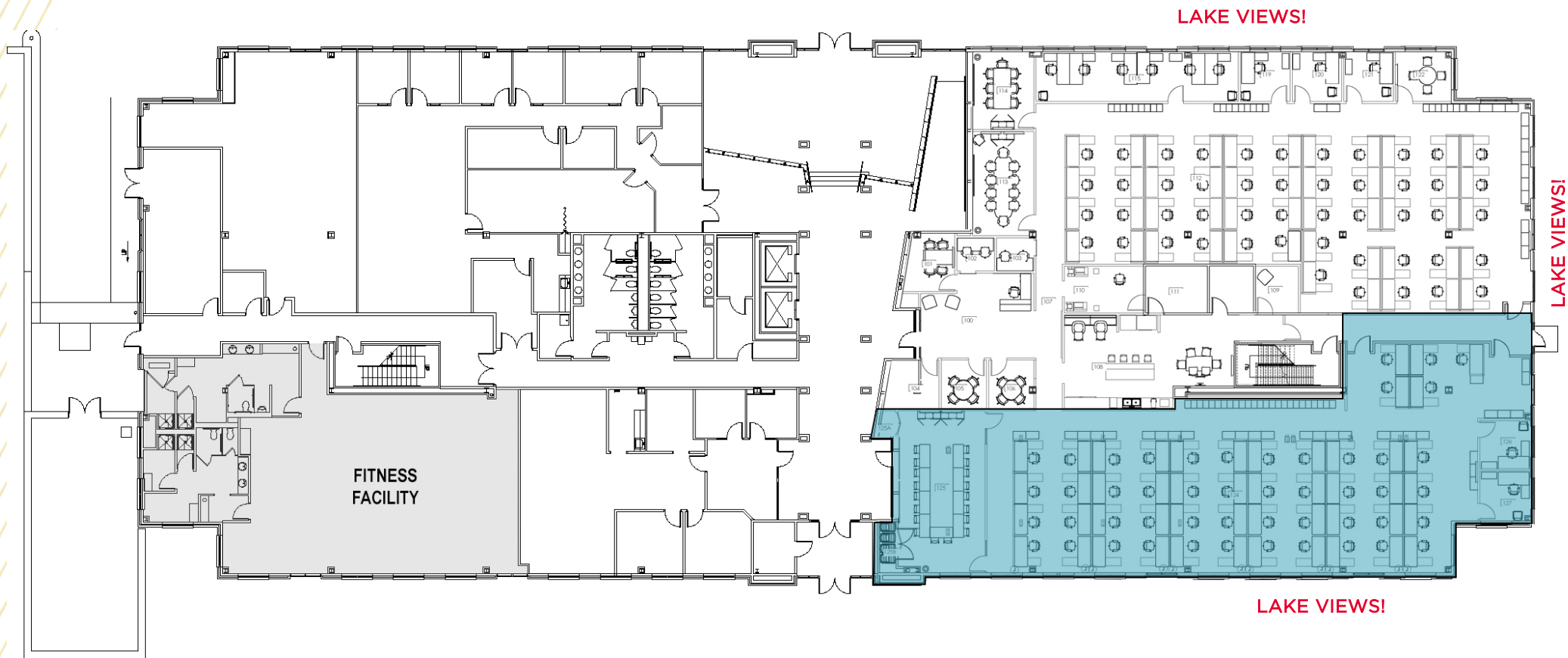
Fitness Center

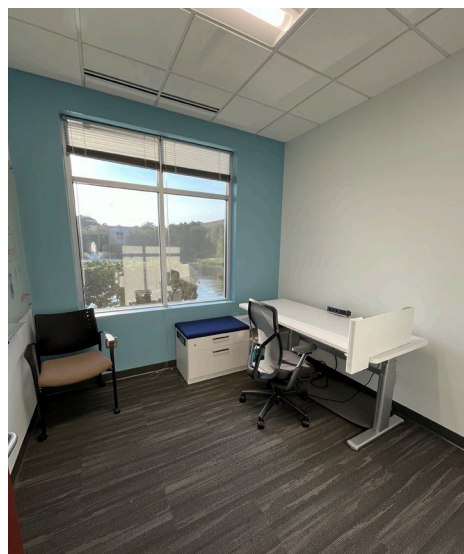
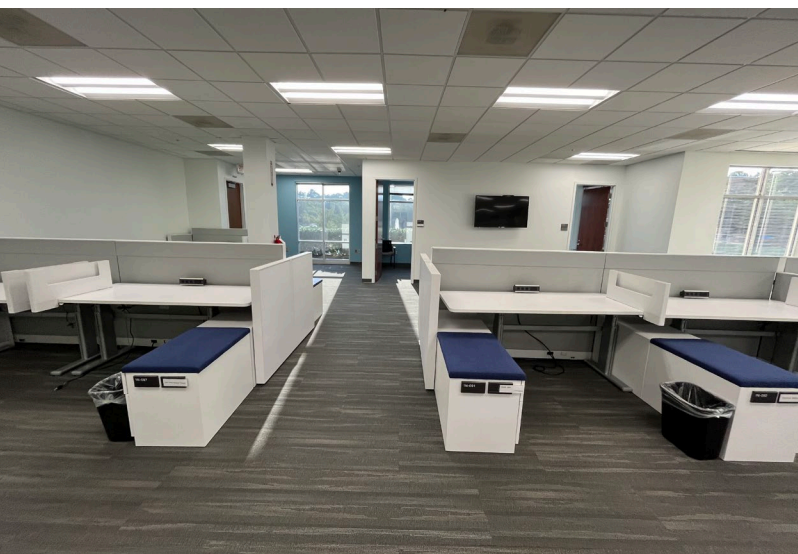
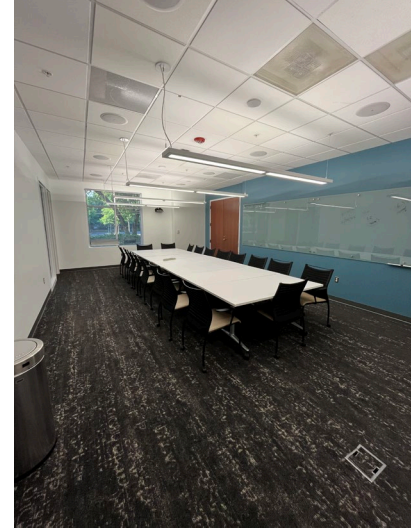
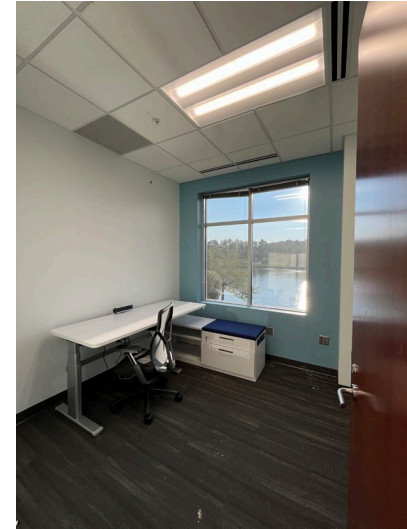
TENANT AMENITIES

FIRST FLOOR FLOORPLAN

FIRST FLOOR

- Suite 110 - 4,862 RSF - *Furniture Available*



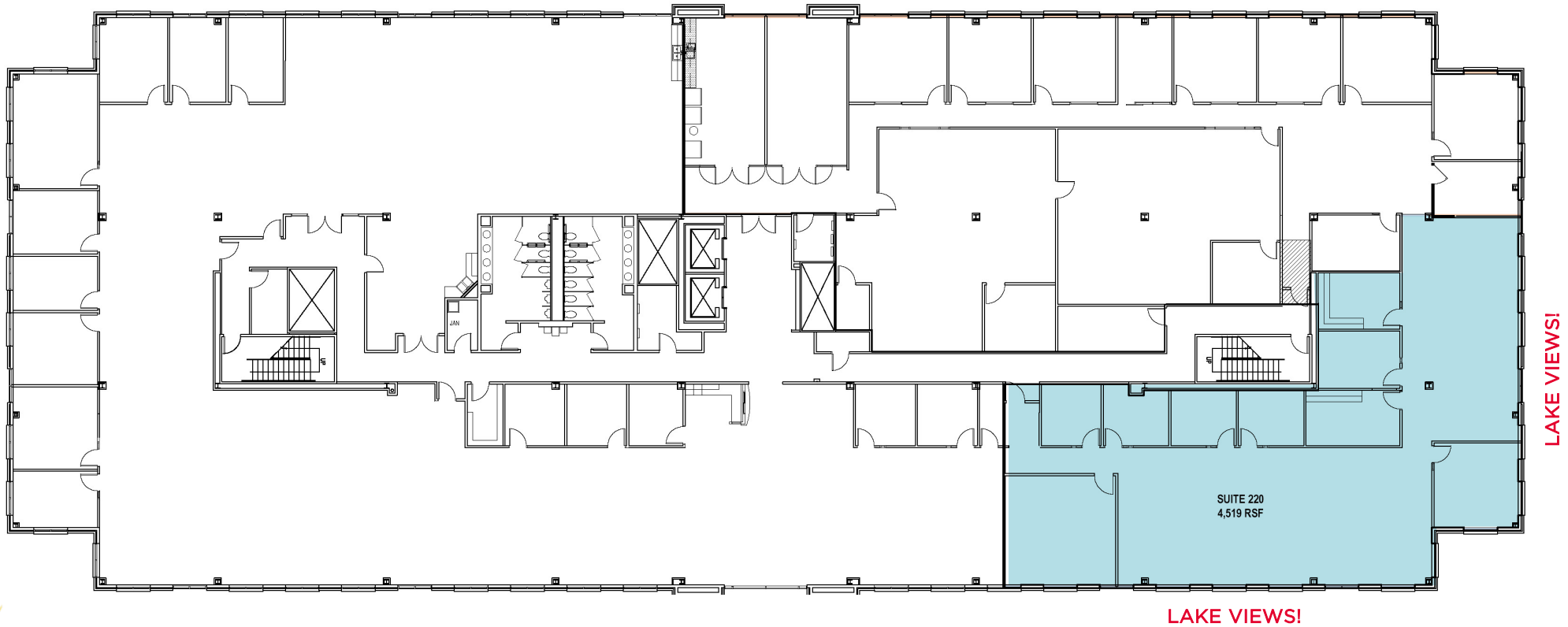


SUITE 110
PHOTOS

SECOND FLOOR FLOORPLAN

SECOND FLOOR

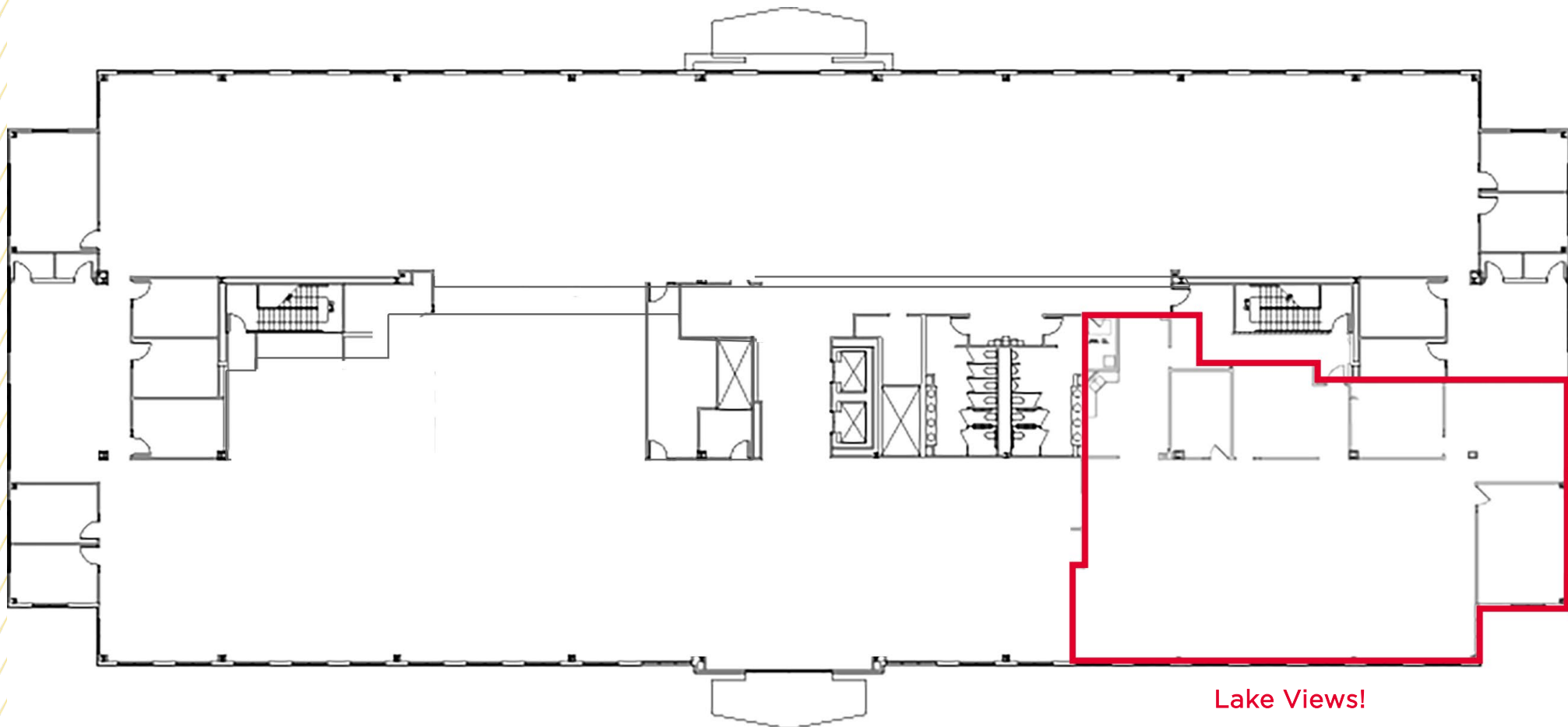
- Suite 220 - 4,519 RSF



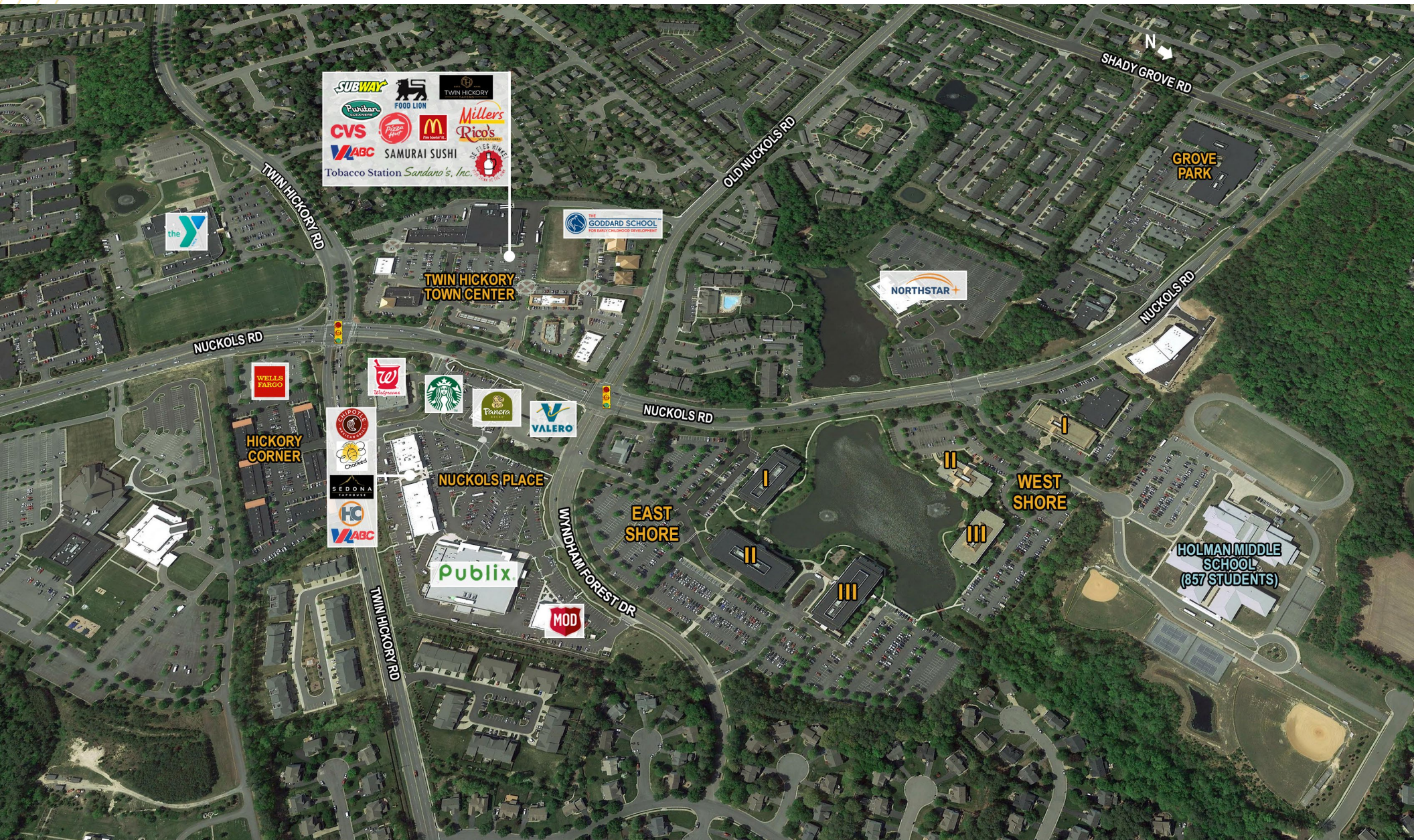
THIRD FLOOR FLOORPLAN

THIRD FLOOR

- Suite 320 - 4,730 RSF



AREA AMENITIES



CONTACT INFORMATION

MARK DOUGLAS, CCIM, SIOR
Senior Vice President
+1 804 697 3418
mark.douglas@thalhimer.com

AMY BRODERICK, MBA
Senior Vice President
+1 804 344 7189
amy.broderick@thalhimer.com



Thalhimer Center
11100 W. Broad Street
Glen Allen, VA 23060
thalhimer.com

Independently Owned and Operated / A Member of the Cushman & Wakefield Alliance

Cushman & Wakefield | Thalhimer © 2025. No warranty or representation, express or implied, is made to the accuracy or completeness of the information contained herein, and same is submitted subject to errors, omissions, change of price, rental or other conditions, withdrawal without notice, and to any special listing conditions imposed by the property owner(s). As applicable, we make no representation as to the condition of the property (or properties) in question.

Owned & Managed by:

