



FOR SALE, LEASE, OR BUILD-TO-SUIT

# RUCKERSVILLE PAD SITES

## Ruckersville, VA 22968

**+ 0.5 - 3.0 ACRE SITES**



**THALHIMER**

# RUCKERSVILLE PAD SITES

## PROPERTY HIGHLIGHTS



0.5 - 3.0 ACRES AVAILABLE



JOIN NEW WAWA OPENING SOON



HIGH TRAFFIC SIGNALIZED INTERSECTION AT THE CORNER OF RT 29 & RT 33



FLEXIBLE SIZING OPPORTUNITIES



RAPIDLY GROWING MARKET WITH CLOSE PROXIMITY TO CHARLOTTESVILLE



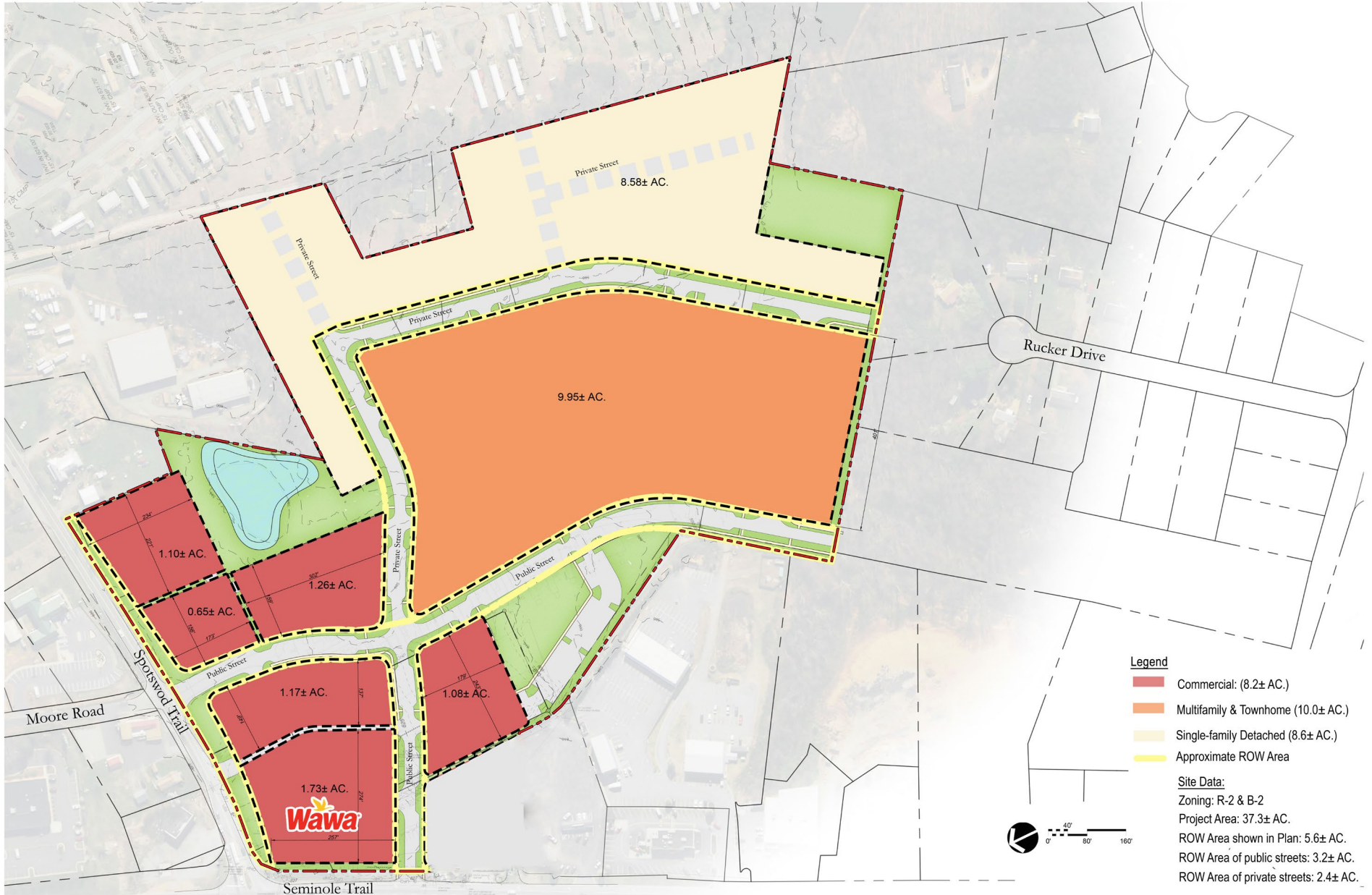
AVAILABLE FOR SALE, LEASE OR BUILD-TO-SUIT



	3 Mile	5 Mile	10 Mile
2024 Total Population	9,476	18,182	46,758
2029 Projected Population	9,894	18,886	48,837
2024 Households	3,657	6,871	17,962
2024 Education Some College & Above	61.9%	59.8%	65.4%
2024 Average Household Income	\$117,235	\$114,833	\$126,270
2024 Median Household Income	\$94,446	\$89,581	\$95,090
2024 Daytime Population	7,506	12,804	37,926
2024 Median Age	41.0	41.7	42.7

# RUCKERSVILLE PAD SITES

## SITE PLAN



# RUCKERSVILLE PAD SITES

## RETAIL AERIAL





**FOR MORE INFORMATION, CONTACT:**

**JENNY STONER**

Senior Vice President  
434 234 8417  
jenny.stoner@thalhimer.com

**JOHN PRITZLAFF**

Executive Vice President  
434 234 8416  
john.pritzlaff@thalhimer.com

**MATT GREENE**

Vice President  
434 333 0089  
matt.greene@thalhimer.com

600 E. Water Street, Suite C.  
Charlottesville, VA 22902  
thalhimer.com

Independently Owned and Operated / A Member of the Cushman & Wakefield Alliance

Cushman & Wakefield | Thalhimer © 2026. No warranty or representation, express or implied, is made to the accuracy or completeness of the information contained herein, and same is submitted subject to errors, omissions, change of price, rental or other conditions, withdrawal without notice, and to any special listing conditions imposed by the property owner(s). As applicable, we make no representation as to the condition of the property (or properties) in question.



**CUSHMAN &  
WAKEFIELD**

**THALHIMER**