

FOR LEASE

11990 N. Lakeridge Parkway
Ashland, Virginia 23005



Property Features

- » ±38,145 SF Available
- » 32' clear height
- » 7 loading docks
- » 2 drive-ins
- » 400 Amp 227/480 Volt, 3 Phase, 4 Wire Electrical
- » ESFR sprinkler system
- » 1.5 miles from I-95 interchange
- » Within the Northlake Business Park, a 185-acre mixed-use development.
- » **Available 8/1/2026**



Owned By
mapletree

Leasing By
CUSHMAN & WAKEFIELD | **THALHIMER**

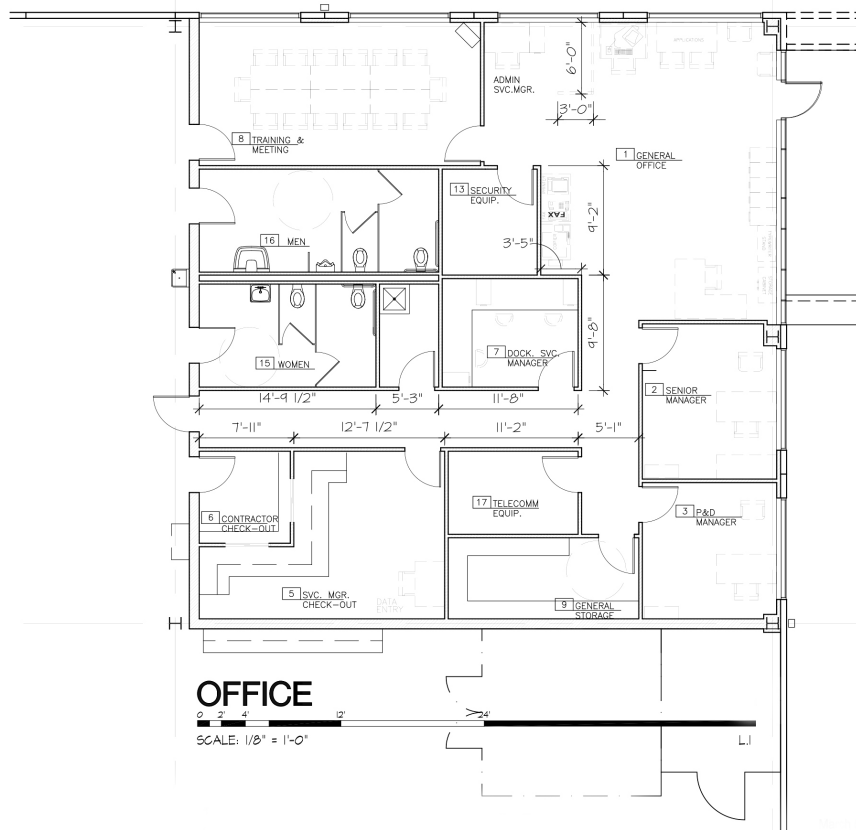
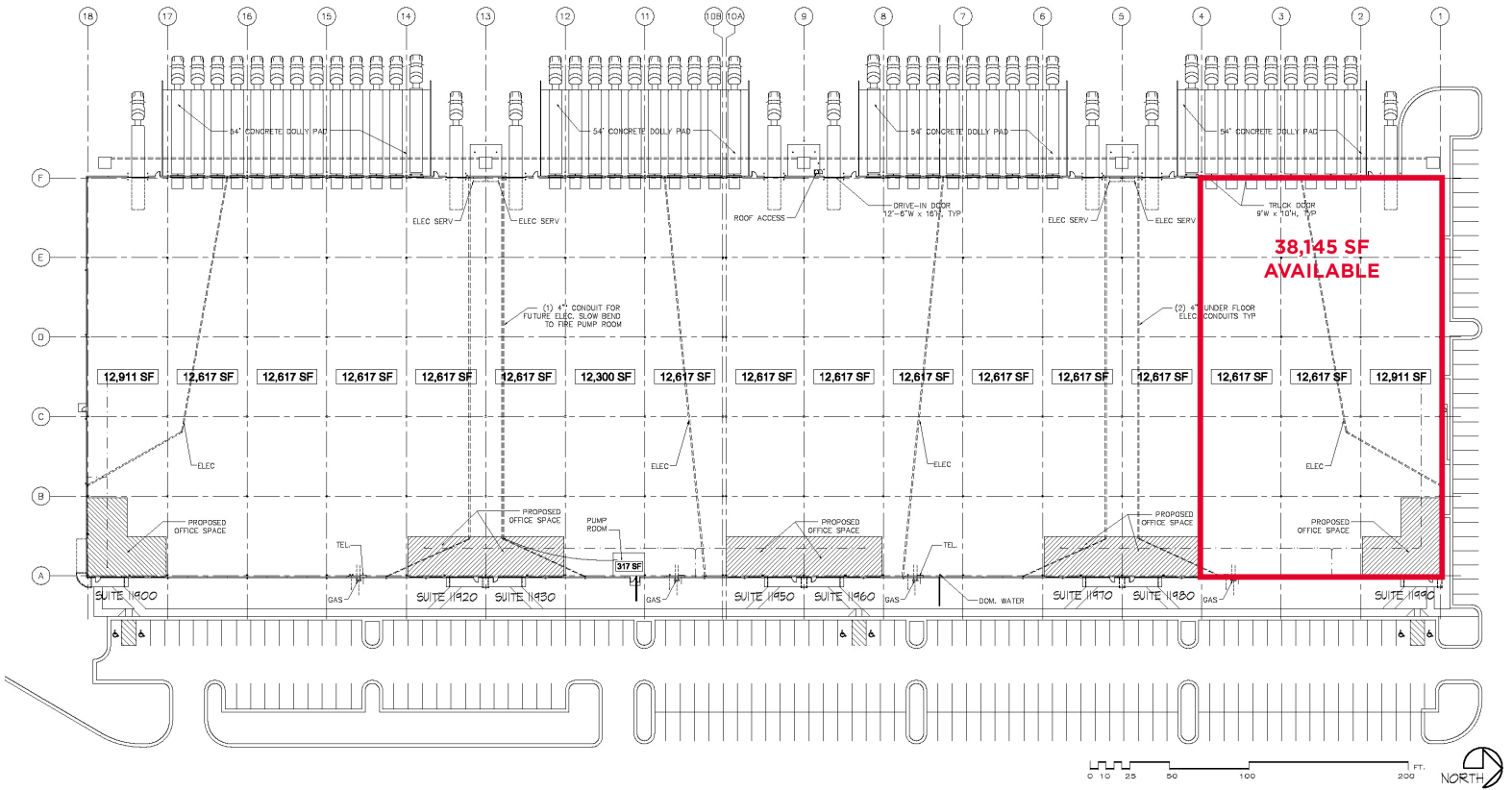
Evan Magrill
Executive Vice President
804 697 3435
evan.magrill@thalhimer.com

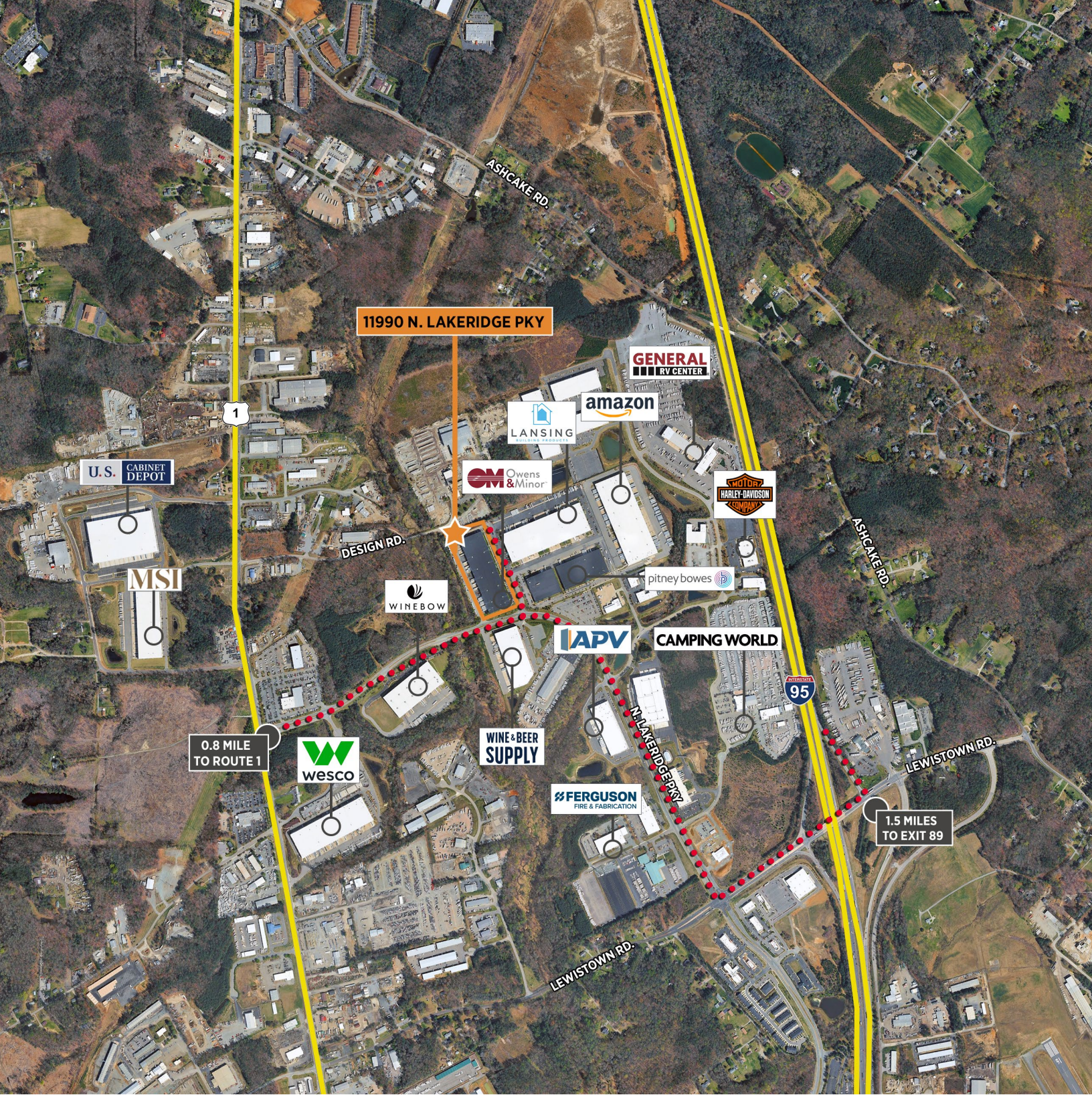
Graham Stoneburner, SIOR
Executive Vice President
804 344 7159
graham.stoneburner@thalhimer.com

FOR LEASE

11990 N. Lakeridge Parkway
Ashland, Virginia 23005

±38,145 SF space





Owned By
mapletree

About Us

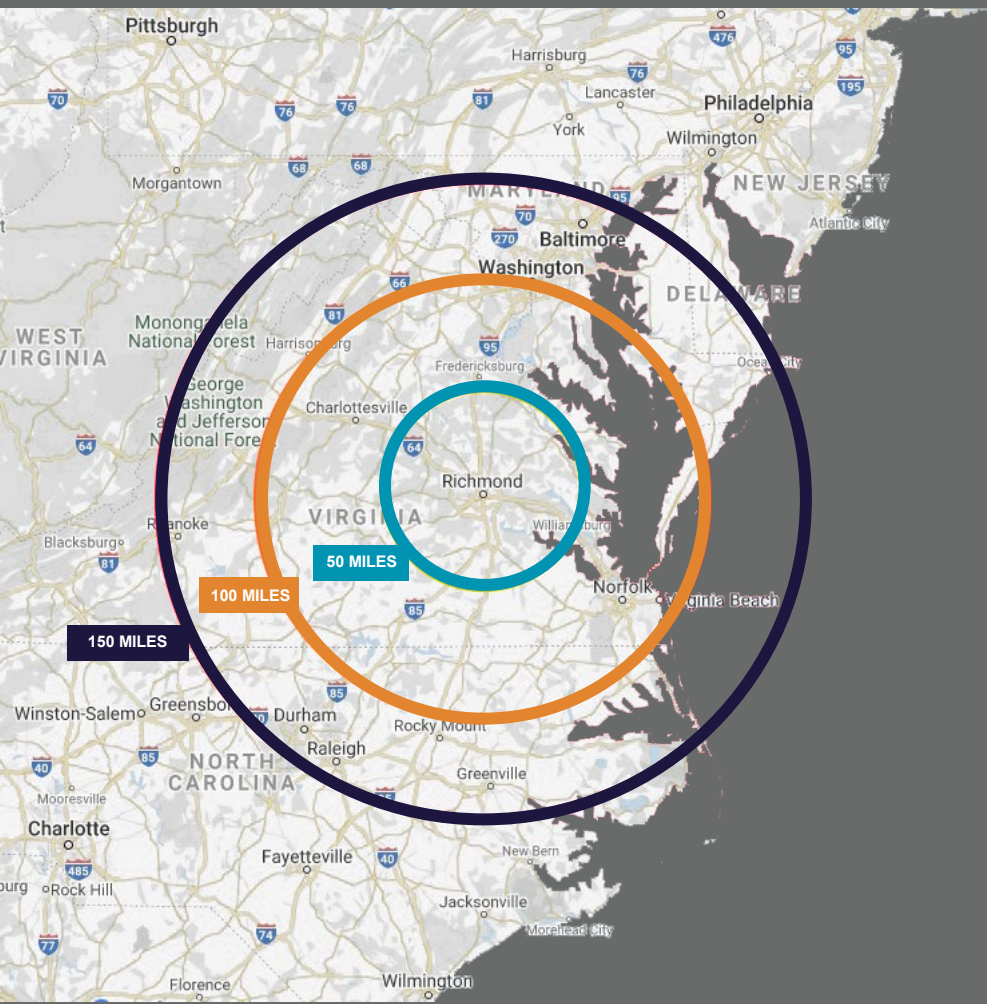
Mapletree is a leading global real estate developer, investor and manager headquartered in Singapore. Mapletree owns and manages 70 million square feet of logistics and industrial properties across 26 states with offices in New York, Chicago, Atlanta, Dallas and Los Angeles.

www.mapletree.com.sg



LOCATION & DEMOGRAPHICS

(20 MILE RADIUS)



POPULATION (2024)
854,486



AVERAGE HOUSEHOLD INCOME
\$122,886



TOTAL BUSINESSES
31,250



LABOR FORCE POPULATION
546,147



UNEMPLOYMENT RATE
3.1%



EDUCATION ATTAINMENT
 HIGH SCHOOL 19.4%
 ASSOC. DEGREE 7.3%
 BACH. DEGREE 28.1%
 GRAD. DEGREE 18.6%

Owned By
maple^{tree}

Leasing By
CUSHMAN & WAKEFIELD | THALHIMER

Evan Magrill
Executive Vice President
804 697 3435
evan.magrill@thalhimer.com

Graham Stoneburner, SIOR
Executive Vice President
804 344 7159
graham.stoneburner@thalhimer.com