

FOR LEASE

2 BAYPORT WAY

NEWPORT NEWS, VIRGINIA



THALHIMER

UP TO 8,732 RSF AVAILABLE

Teresa Nettles
Senior Vice President
757 873 9268
teresa.nettles@thalhimer.com

One BayPort Way
Suite 100
Newport News, VA 23606
thalhimer.com

PROPERTY FEATURES



56,400 SF

TOTAL BUILDING SIZE

189

PARKING SPACES

Suite 120 – 4,950 RSF
Suite 130 – 3,782 RSF (shell)

(suites can be combined for 8,732 RSF)

TOTAL SPACE AVAILABLE

DIRECTORY SIGN

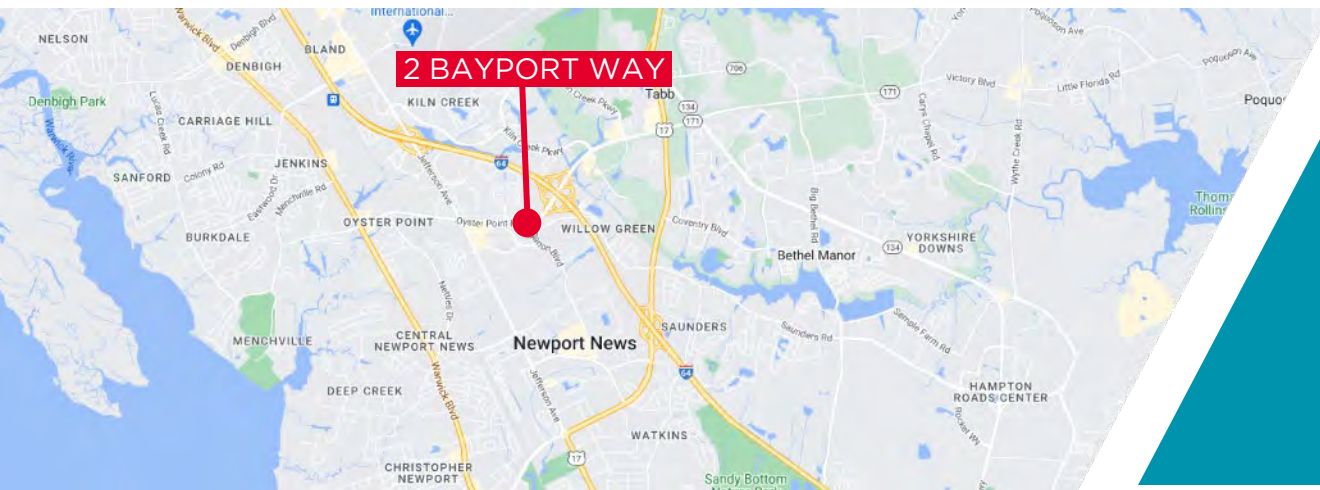
SIGNAGE

\$22.50/SF

LEASE RATE

FULL SERVICE

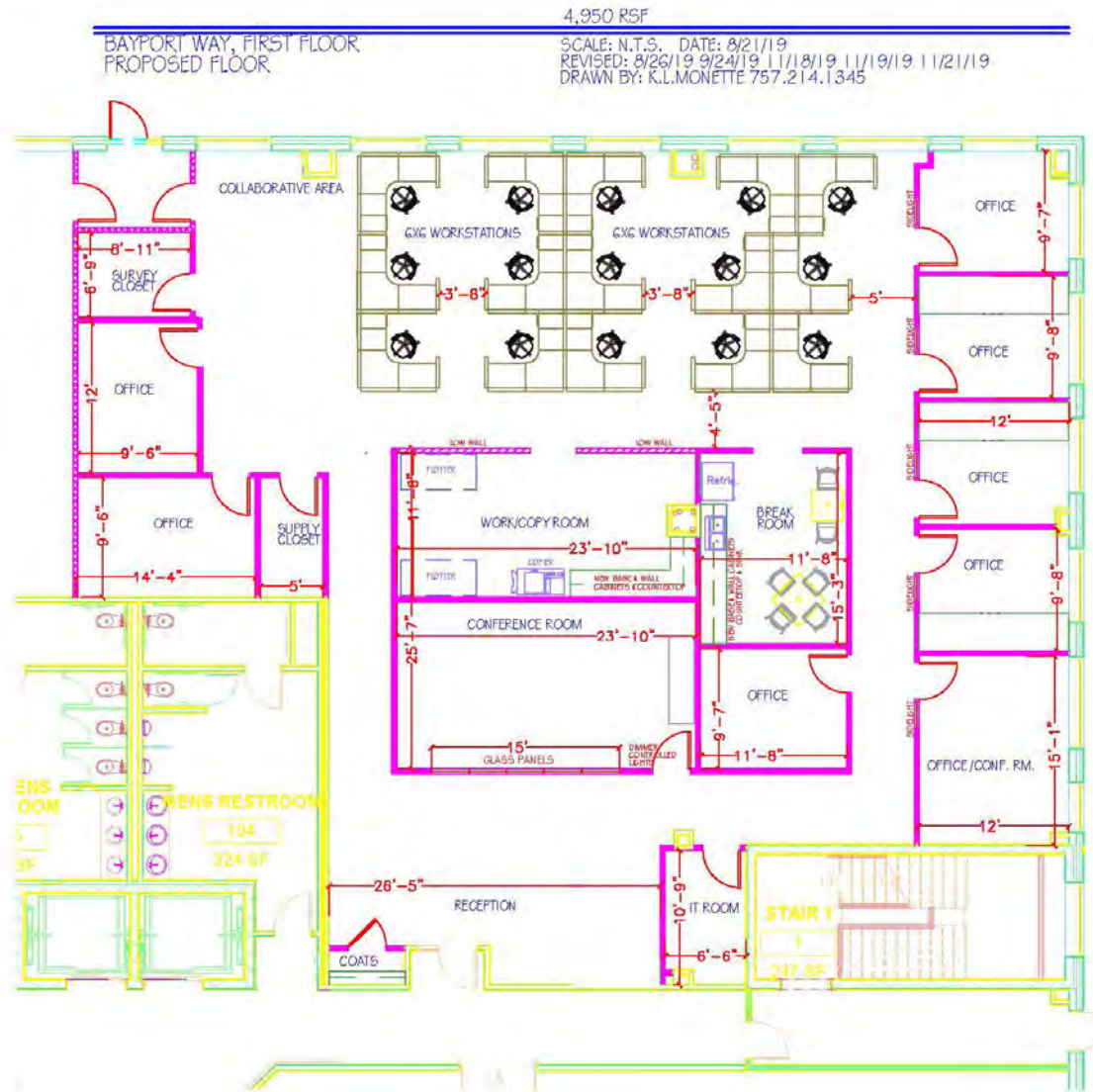
LEASE TYPE



- Class A Office
- Entrance at signalized corner
- Located at entrance to Oyster Point Park, just off I-64

PROPERTY FLOOR PLAN

SUITE 120
4,950 RSF



- cubicles available

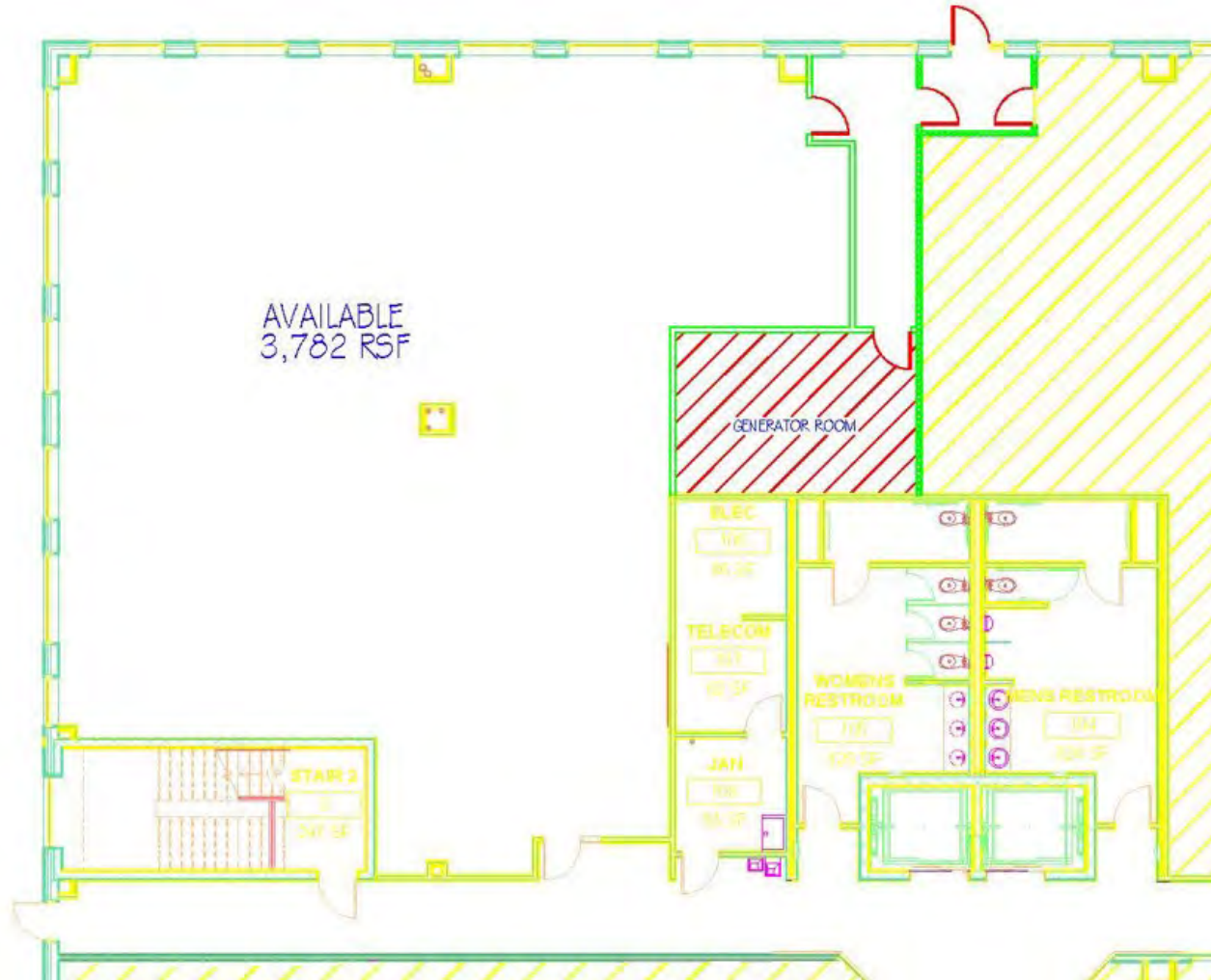
Independently Owned and Operated / A Member of the Cushman & Wakefield Alliance

Cushman & Wakefield | Thalhimer © 2026. No warranty or representation, express or implied, is made to the accuracy or completeness of the information contained herein, and same is submitted subject to errors, omissions, change of price, rental or other conditions, withdrawal without notice, and to any special listing conditions imposed by the property owner(s). As applicable, we make no representation as to the condition of the property (or properties) in question.

PROPERTY FLOOR PLAN

SUITE 130

3,781 RSF (shell space)

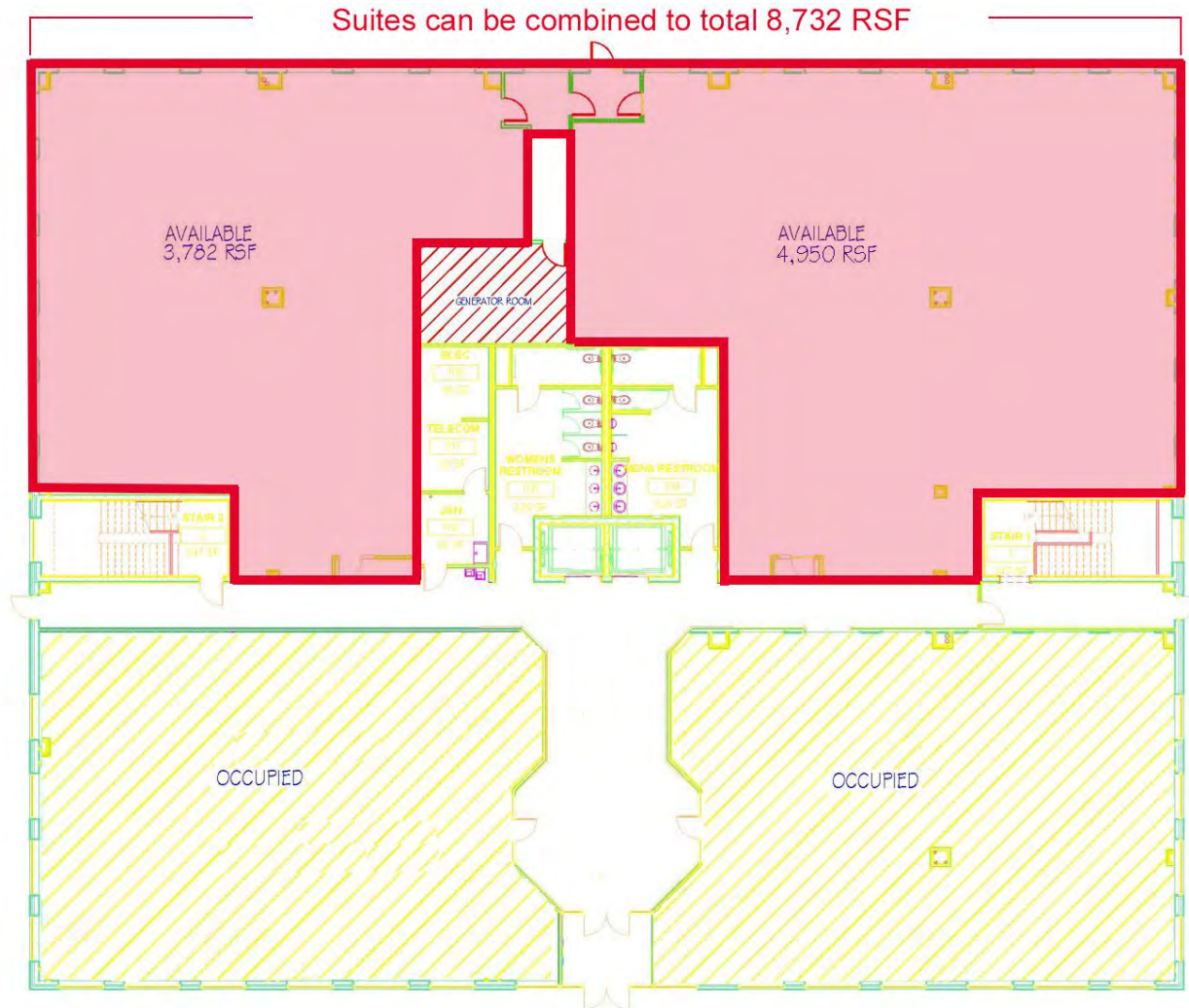


Independently Owned and Operated / A Member of the Cushman & Wakefield Alliance

Cushman & Wakefield | Thalhimer © 2026. No warranty or representation, express or implied, is made to the accuracy or completeness of the information contained herein, and same is submitted subject to errors, omissions, change of price, rental or other conditions, withdrawal without notice, and to any special listing conditions imposed by the property owner(s). As applicable, we make no representation as to the condition of the property (or properties) in question.

PROPERTY FLOOR PLAN

SUITES 120 & 130



Suites can be combined to total 8,732 RSF

2 BAYPORT WAY
FIRST FLOOR

DRAWN BY: K.L.MONETTE 757.214.1345

Independently Owned and Operated / A Member of the Cushman & Wakefield Alliance

Cushman & Wakefield | Thalhimer © 2026. No warranty or representation, express or implied, is made to the accuracy or completeness of the information contained herein, and same is submitted subject to errors, omissions, change of price, rental or other conditions, withdrawal without notice, and to any special listing conditions imposed by the property owner(s). As applicable, we make no representation as to the condition of the property (or properties) in question.