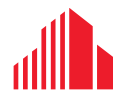




1,200 SF RETAIL FOR LEASE

# SMITHFIELD COMMONS

1807 & 1809 S. CHURCH STREET, SMITHFIELD, VA 23430



CUSHMAN &  
WAKEFIELD

THALHIMER

# // PROPERTY HIGHLIGHTS



1,200 SF RETAIL SPACE



POTENTIAL TO COMBINE NEIGHBORING UNIT FOR 2,400 SF



HISTORIC CORRIDOR OF SMITHFIELD



22,000 SF OF DISTINCTIVE SHOPS IN ESTABLISHED RETAIL CORRIDOR



NEW RESIDENTIAL & COMMERCIAL DEVELOPMENTS NEARBY



CONVENIENT ACCESS TO INTERSTATE SYSTEM



96 PARKING SPACES



AVERAGE HOUSEHOLD INCOME \$123,889 (1-MILE RADIUS)



13,600 VPD ON S. CHURCH STREET



FULL DEMOGRAPHICS AVAILABLE



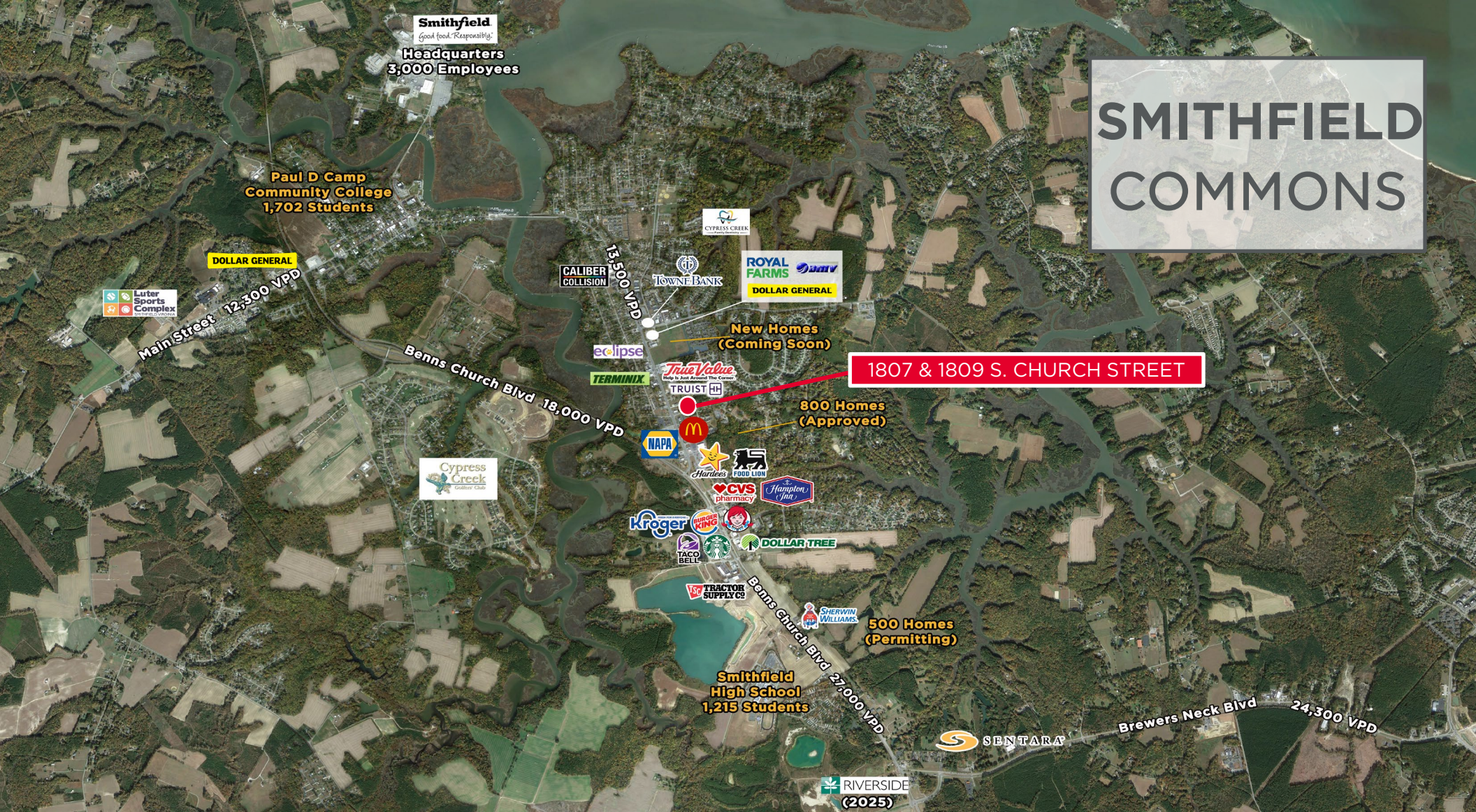
STRONG CO-TENANCY INCLUDING VERIZON, FIT BODY BOOT CAMP & EDWARD JONES



# // SITE PLAN



# SMITHFIELD COMMONS



## CONTACT

**CLAY WILLIS**  
Senior Associate  
+1 757 213 4143  
clay.willis@thalhimer.com

**DEAN MARTIN**  
First Vice President  
+1 757 213 4158  
dean.martin@thalhimer.com

The Town Center at Virginia Beach  
222 Central Park Avenue Suite 1500  
Virginia Beach, VA 23462  
thalhimer.com



Independently Owned and Operated / A Member of the Cushman & Wakefield Alliance

Cushman & Wakefield | Thalhimer © 2025. No warranty or representation, express or implied, is made to the accuracy or completeness of the information contained herein, and same is submitted subject to errors, omissions, change of price, rental or other conditions, withdrawal without notice, and to any special listing conditions imposed by the property owner(s). As applicable, we make no representation as to the condition of the property (or properties) in question.