

FLEX SPACE FOR LEASE
GREENBRIER COMMERCE PARK
1025 Executive Boulevard, Suite 107
Chesapeake, Virginia

1,595 SF IMMEDIATELY AVAILABLE



BRETT SAIN, SIOR
First Vice President
757 213 4153
brett.sain@thalhimer.com

The Town Center of Virginia Beach
222 Central Park Avenue, Suite 1500
Virginia Beach, VA 23462
757 499 2900 | Thalhimer.com



Independently Owned and Operated / A Member of the Cushman & Wakefield Alliance

Cushman Wakefield | Thalhimer ©2025. No warranty or representation, express or implied, is made to the accuracy or completeness of the information contained herein, and same is submitted subject to errors, omissions, change of price, rental or other conditions, withdrawal without notice, and to any special listing conditions, imposed by the property owner(s). As applicable, we make no representation as to the condition of the property (or properties) in question.

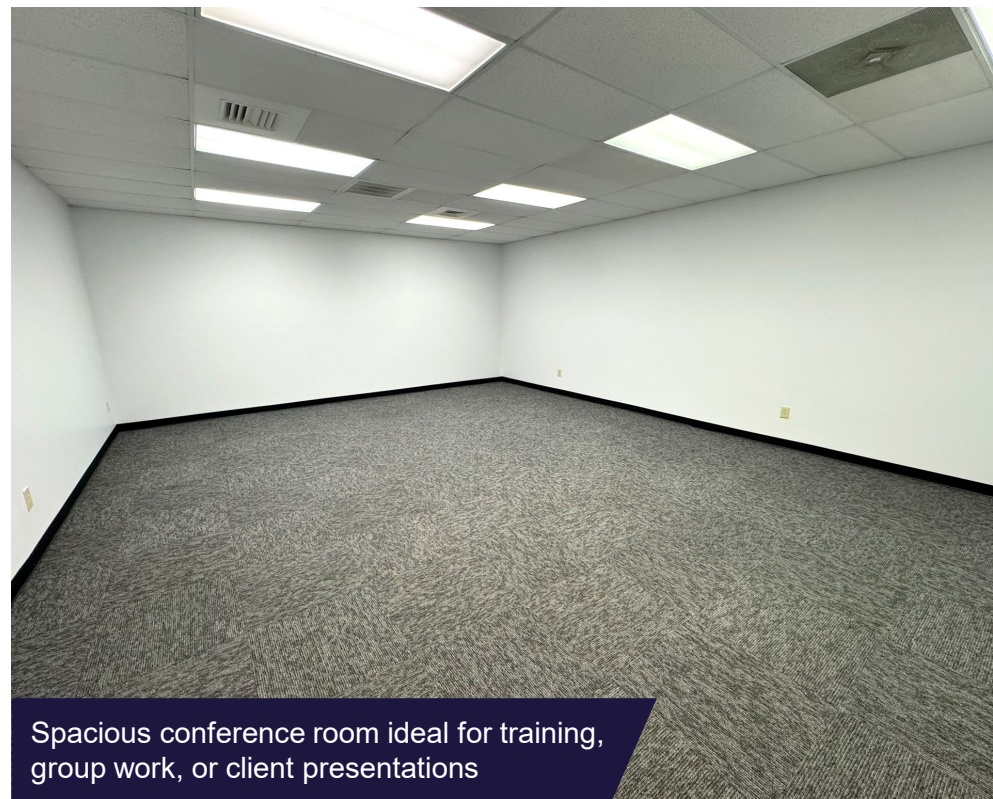
PROPERTY DETAILS

- 1,595 SF office space
- PUD, allows for light industrial and office uses
- Perfect for trade professionals, small businesses, and sales office
- Exterior building enhancements completed 2024
- Suite contains two (2) private offices, conference room, two (2) restrooms, kitchenette, and small storage room with access to a roll up door
- Ample parking
- Owner pays operating expenses
- Tenant pays its own utility expenses
- 3% annual increases
- **Rent Rate: \$13.00 PSF | \$1,725.00 / month**

2025 DEMOGRAPHICS	1 Mile	3 Mile	5 Mile
Total Population	11,410	79,186	216,224
Median Household Income	\$84,500	\$83,684	\$91,986
Daytime Population	18,140	92,949	190,444
Median Age	38.8	39.1	38.8

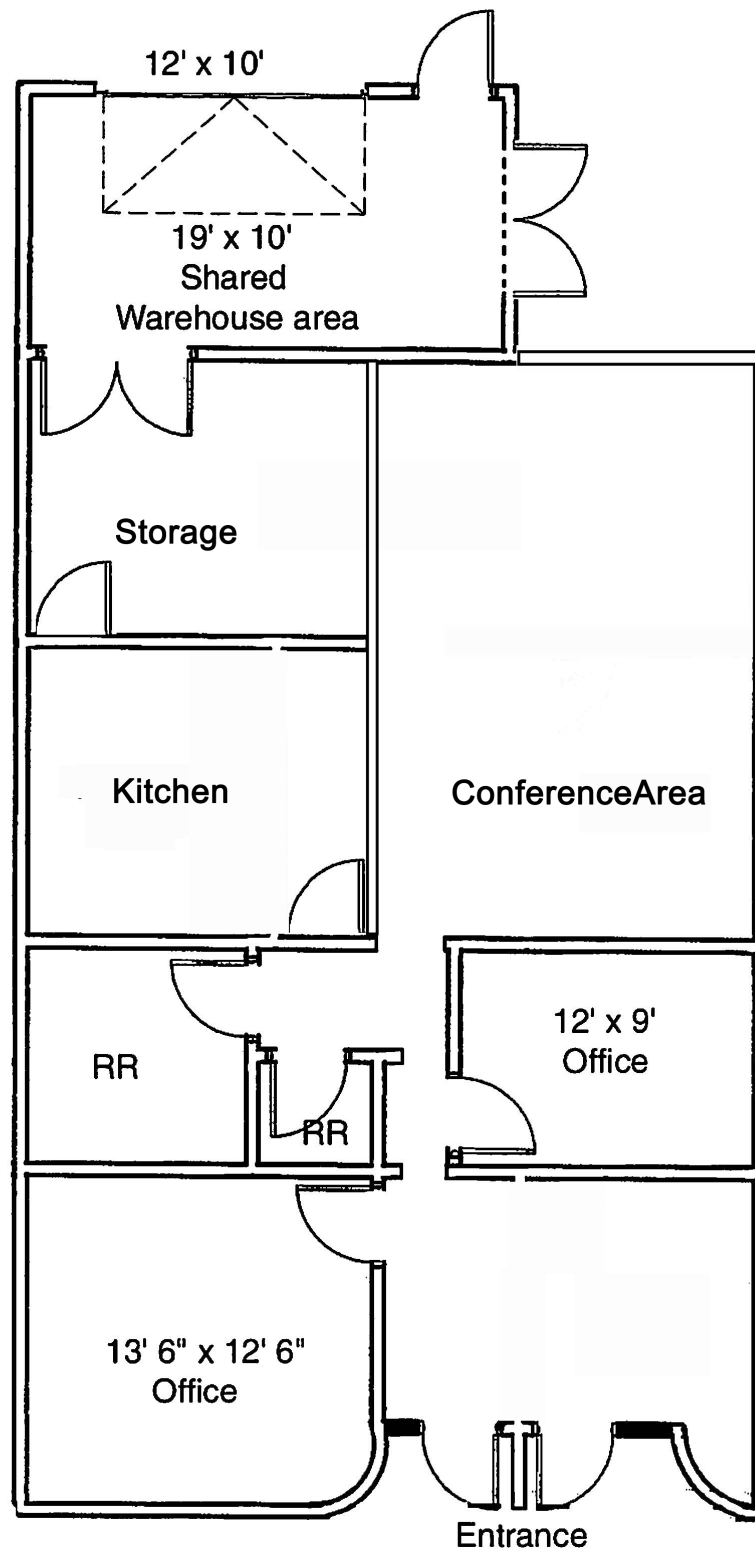


Well-appointed office space with updated carpet and lighting



Spacious conference room ideal for training, group work, or client presentations

FLOOR PLAN



Suite 107
1,595 sf
Not to scale

LOCATION OVERVIEW



1025 EXECUTIVE BOULEVARD