

MODERN SHOWROOM | FUNCTIONAL WAREHOUSE

9,015 SF



500 WOODLAKE CIRCLE

CHESAPEAKE, VA 23320

SUITE B

BRETT SAIN, SIOR
First Vice President
757 213 4153
brett.sain@thalhimer.com

Town Center of Virginia Beach
222 Central Park Avenue, Suite 1500
757 499 2900
thalhimer.com



THALHIMER

PROPERTY DETAILS

Available SF:	9,015 SF
	<ul style="list-style-type: none">• 6,320 SF high-bay warehouse space• 2,695 SF office / premier showroom
Construction:	Metal and split block
Zoning:	PUD, Light Industrial
Clear:	22' warehouse
Column Spacing:	25' x 55'
Power:	3-Phase, 400-amp 480 volt
Loading:	One (1) dock door Two (2) grade-level doors
Miscellaneous:	Located in desirable Greenbrier Industrial Park Ample parking
Lease Rate:	\$12.50 PSF, NNN Tenant pays operating expenses (est. \$1.88/PSF) Tenant pays its own utilities Annual escalation rate is 3.5%



99,131
POPULATION
Within 3 Miles



\$75,920
AVG. INCOME
Within 3 Miles



\$331,554
AVG. HOME VALUE
Within 3 Miles



37.7
AVG. AGE
Within 3 Miles

500 WOODLAKE CIRCLE

PROPERTY HIGHLIGHTS



Professionally Landscaped



Beautifully finished showroom with modern design and natural light



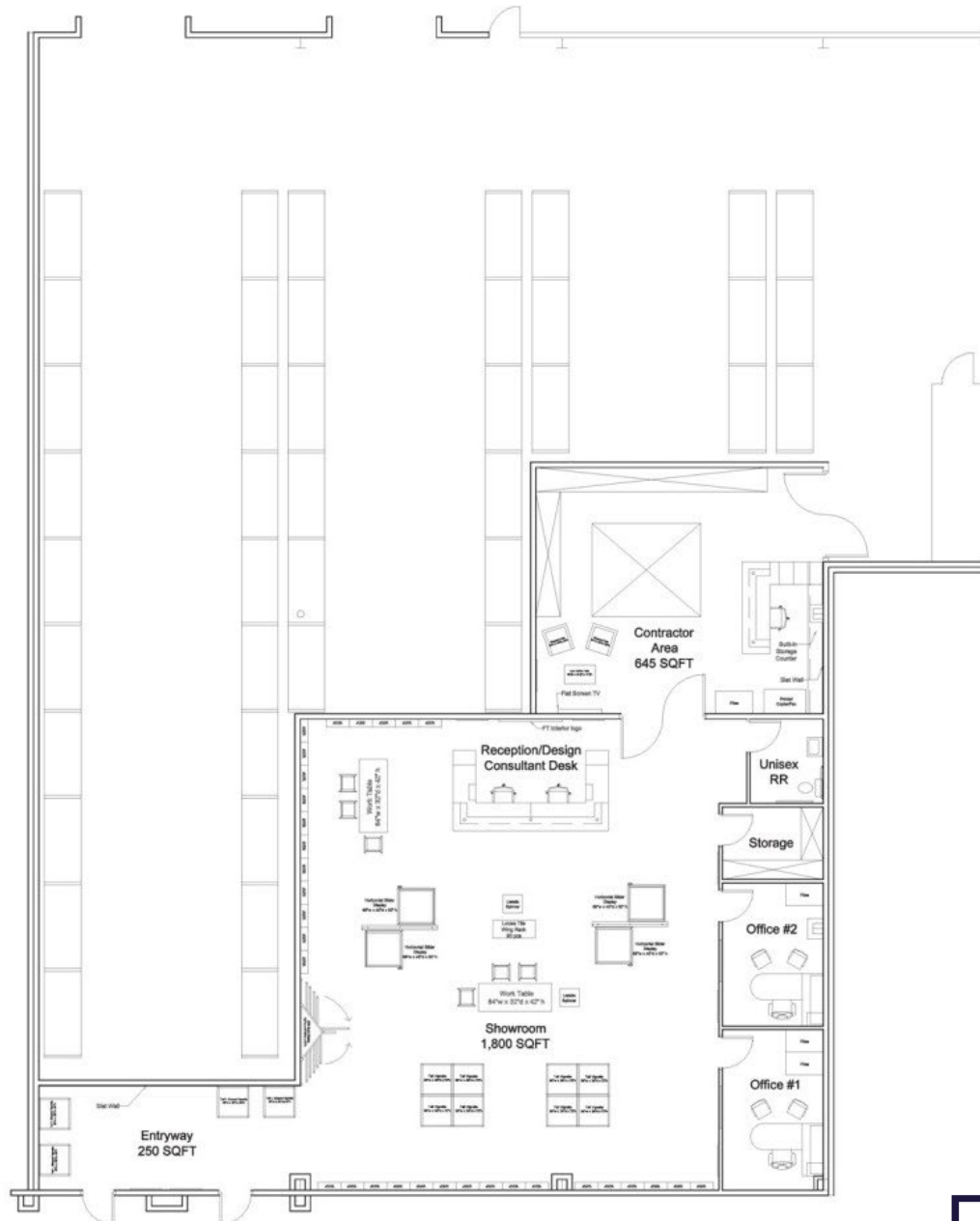
Easy Access to the I-64 Interstate Network



Executive hotels, dining, and shopping centers nearby



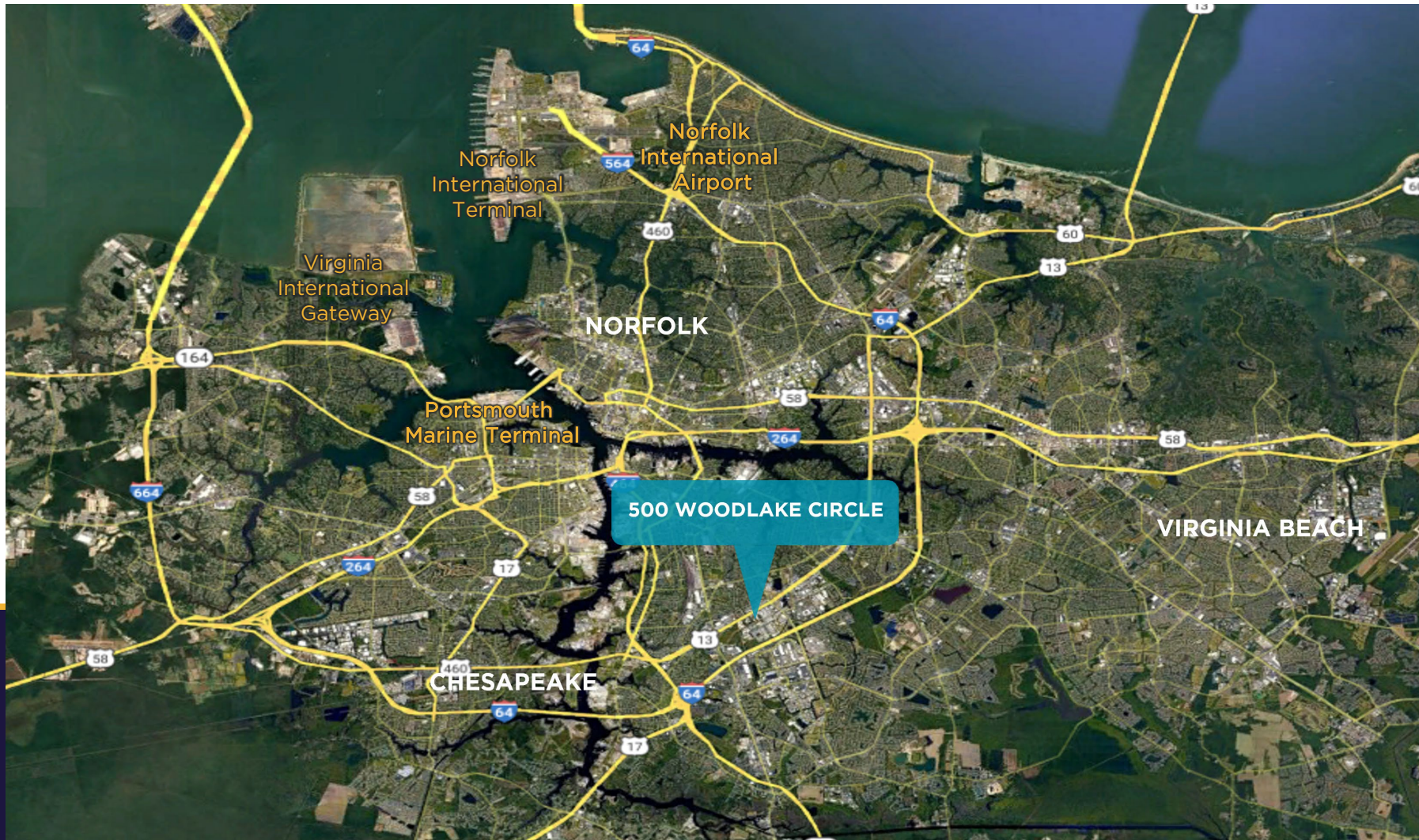




FLOOR PLAN

9,015 SF

INTERSTATE CONNECTIVITY



Independently Owned and Operated / A Member of the Cushman & Wakefield Alliance

Cushman & Wakefield | Thalhimer © 2026. No warranty or representation, express or implied, is made to the accuracy or completeness of the information contained herein, and same is submitted subject to errors, omissions, change of price, rental or other conditions, withdrawal without notice, and to any special listing conditions imposed by the property owner(s). As applicable, we make no representation as to the condition of the property (or properties) in question.