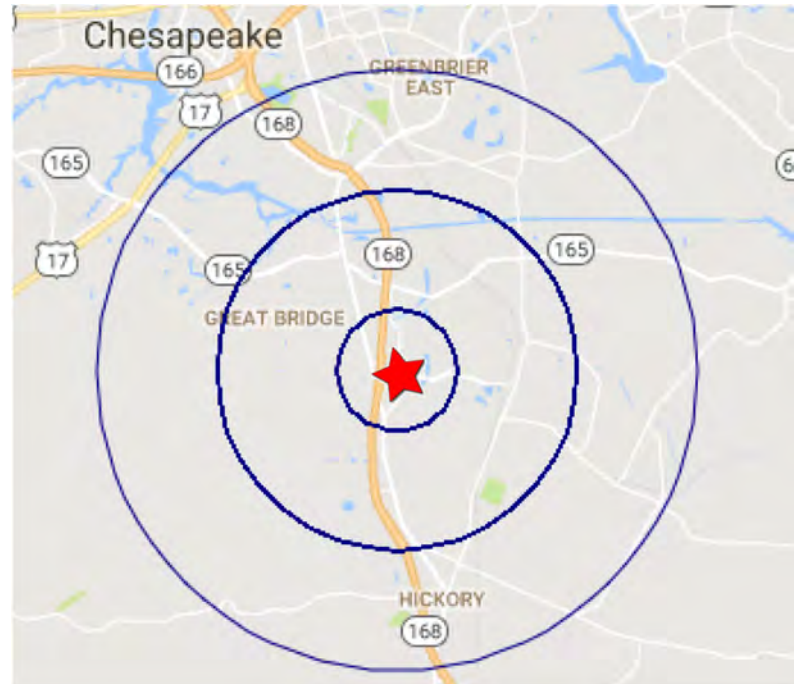


Property Features

- Corner lot, at signalized intersection
- 11,000 SF to be built, delivering Q4 2020
- Conveniently located near Battlefield Blvd & Chesapeake Expressway
- Adjacent to Hanbury Village Shopping Center
- Over 71,000 VPD on Chesapeake Expressway
- Office/medical/service uses



Demographics

	1 Mile	3 Miles	5 Miles
Population	7,949	41,398	85,494
No. of Households	2,608	13,375	26,668
Avg. HH Income	\$133,443	\$130,830	\$120,217

For more information, contact:

WICK SMITH
 Senior Associate
 757 457 9998
 wick.smith@thalhimer.com

The Town Center of Virginia Beach
 222 Central Park Ave., Suite 1500
 Virginia Beach, VA 23462
 www.thalhimer.com



For more information, contact:

WICK SMITH
 Senior Associate
 757 457 9998
wick.smith@thalhimer.com

The Town Center of Virginia Beach
 222 Central Park Ave., Suite 1500
 Virginia Beach, VA 23462
www.thalhimer.com



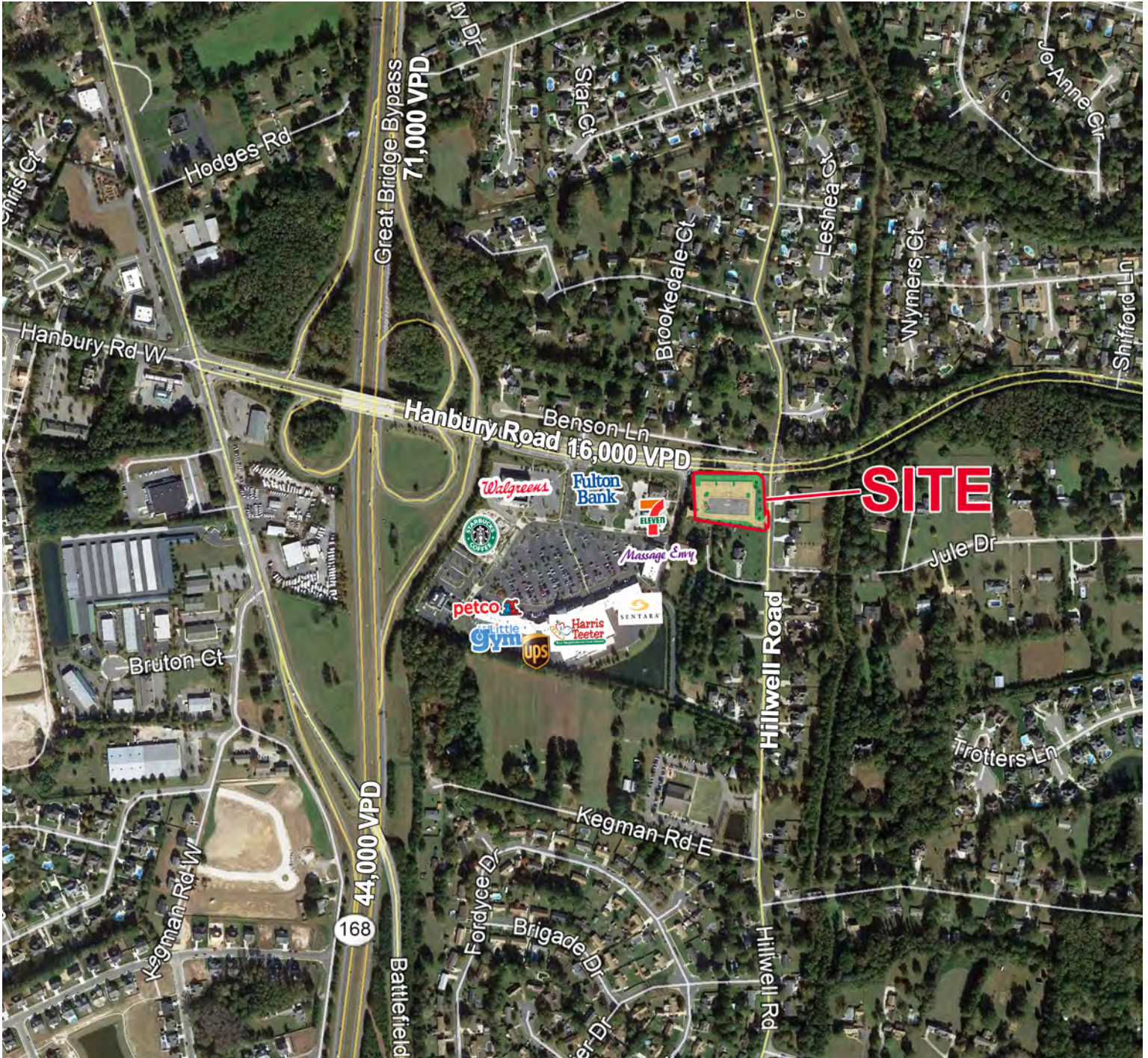
For more information, contact:

WICK SMITH
Senior Associate
757 457 9998
wick.smith@thalhimer.com

The Town Center of Virginia Beach
222 Central Park Ave., Suite 1500
Virginia Beach, VA 23462
www.thalhimer.com

PROPOSED OFFICE/SERVICE DEVELOPMENT Hillwell Road & Hanbury Road

Chesapeake, VA



For more information, contact:

WICK SMITH
Senior Associate
757 457 9998
wick.smith@thalhimer.com

The Town Center of Virginia Beach
222 Central Park Ave., Suite 1500
Virginia Beach, VA 23462
www.thalhimer.com