

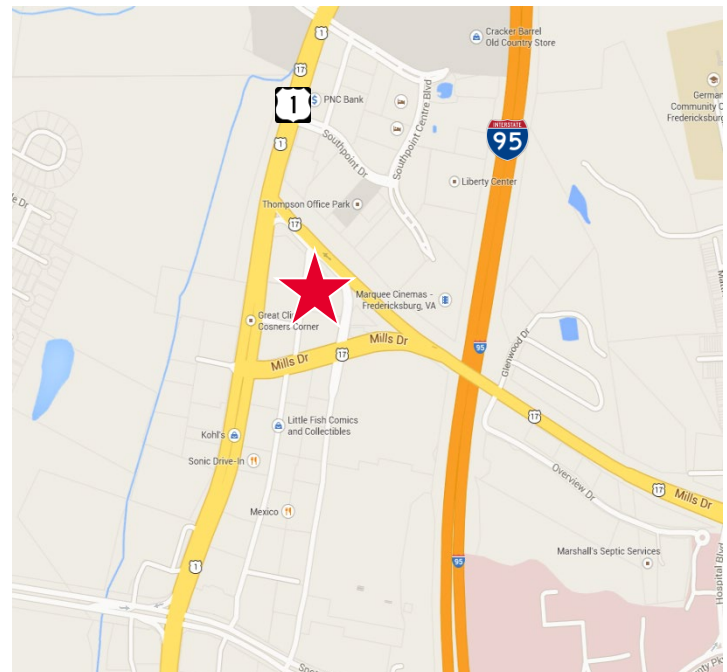


Property Features

- 3,006 total SF available
- Two vanilla shells at 1,503 SF each, can be combined
- HVAC and one bath (AOA) in each space
- Easy access with excellent visibility at the intersection of Route 1 and Route 17
- Prominent monument signage
- Located in a major shopping district at Cosner's Corner

Specifications

Available SF	Suite 10143:	1,503 SF
	Suite 10147:	1,503 SF
Lease Rate	\$16.50 PSF NNN	
Timing	Immediately	



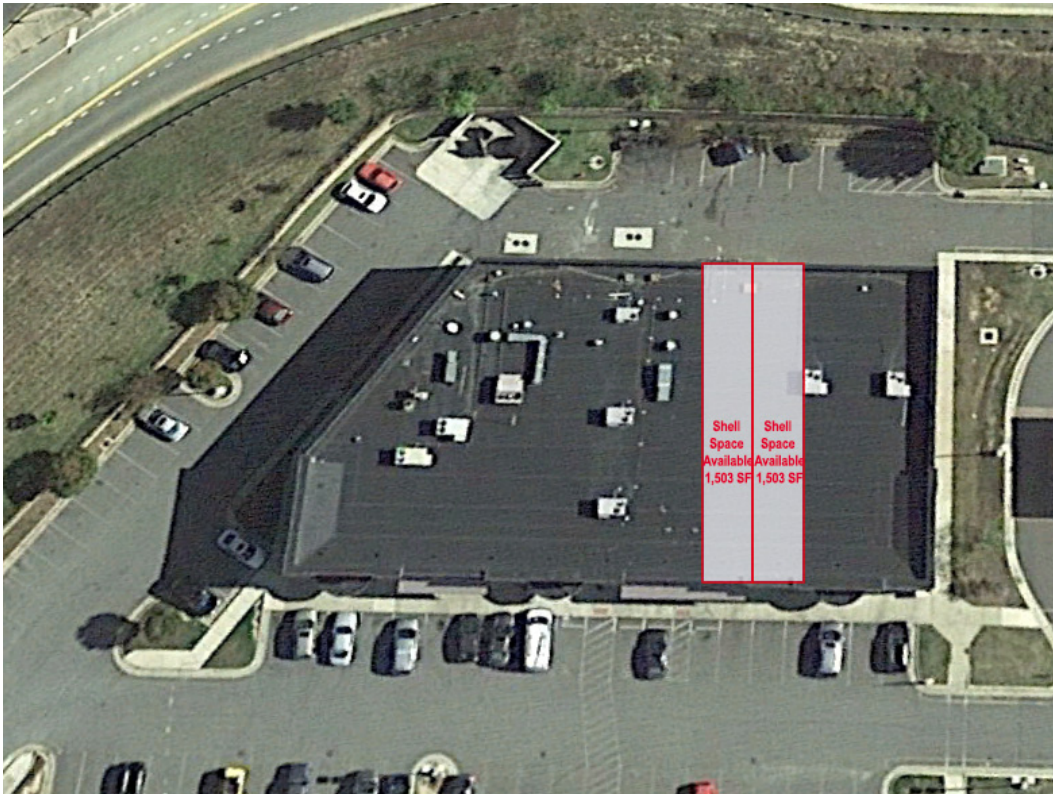
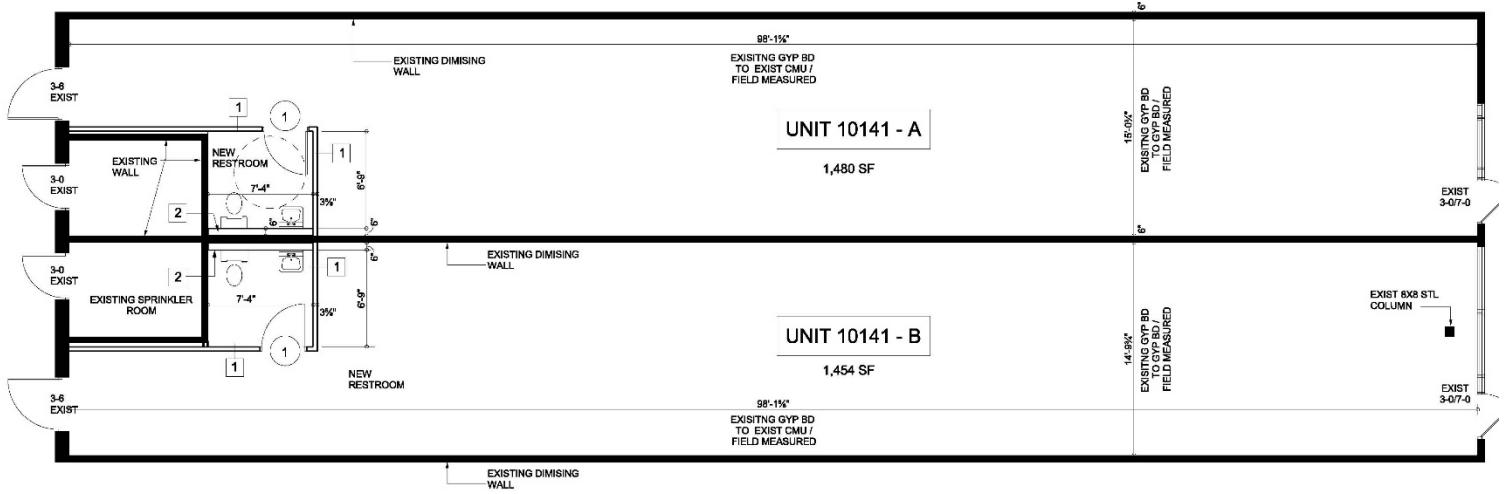
For more information, contact:

VIRGIL NELSON, CCIM
 Senior Vice President
 540 322 4150
 virgil.nelson@thalhimer.com

BERKLEY MITCHELL
 Vice President
 540 322 4144
 berkley.mitchell@thalhimer.com

Eagle Village
 1125 Emancipation Highway, Suite 350
 Fredericksburg, VA 22401
 www.thalhimer.com

Floor Plan



For more information, contact:

VIRGIL NELSON, CCIM
 Senior Vice President
 540 322 4150
virgil.nelson@thalhimer.com

BERKLEY MITCHELL
 Vice President
 540 322 4144
berkley.mitchell@thalhimer.com

Eagle Village
 1125 Emancipation Highway, Suite 350
 Fredericksburg, VA 22401
www.thalhimer.com