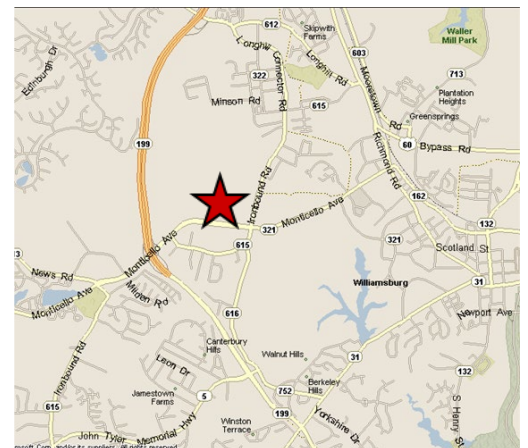




Property Features

- Class A Office Condominium for Sale or Lease
- Suite 200: 3,000sf
- Lease Rate: \$20.50psf, includes utilities and common area janitorial (restrooms are common). Tenant pays for janitorial to interior of the suite.
- Sale Price: \$600,000 (\$200psf) (the entire second floor can also be purchased for \$1.2m with Suite 201 providing rental income being leased to www.lifestance.com)
- Suite 200 offers an efficient floor plan design including 9 private offices, collaboration work area and a conference room
- Excellent window line with good natural light and high ceilings
- The property is located within New Town a mixed-use development offering walkability to residential accommodations, dining, entertainment and shopping
- Exterior signage available and good parking

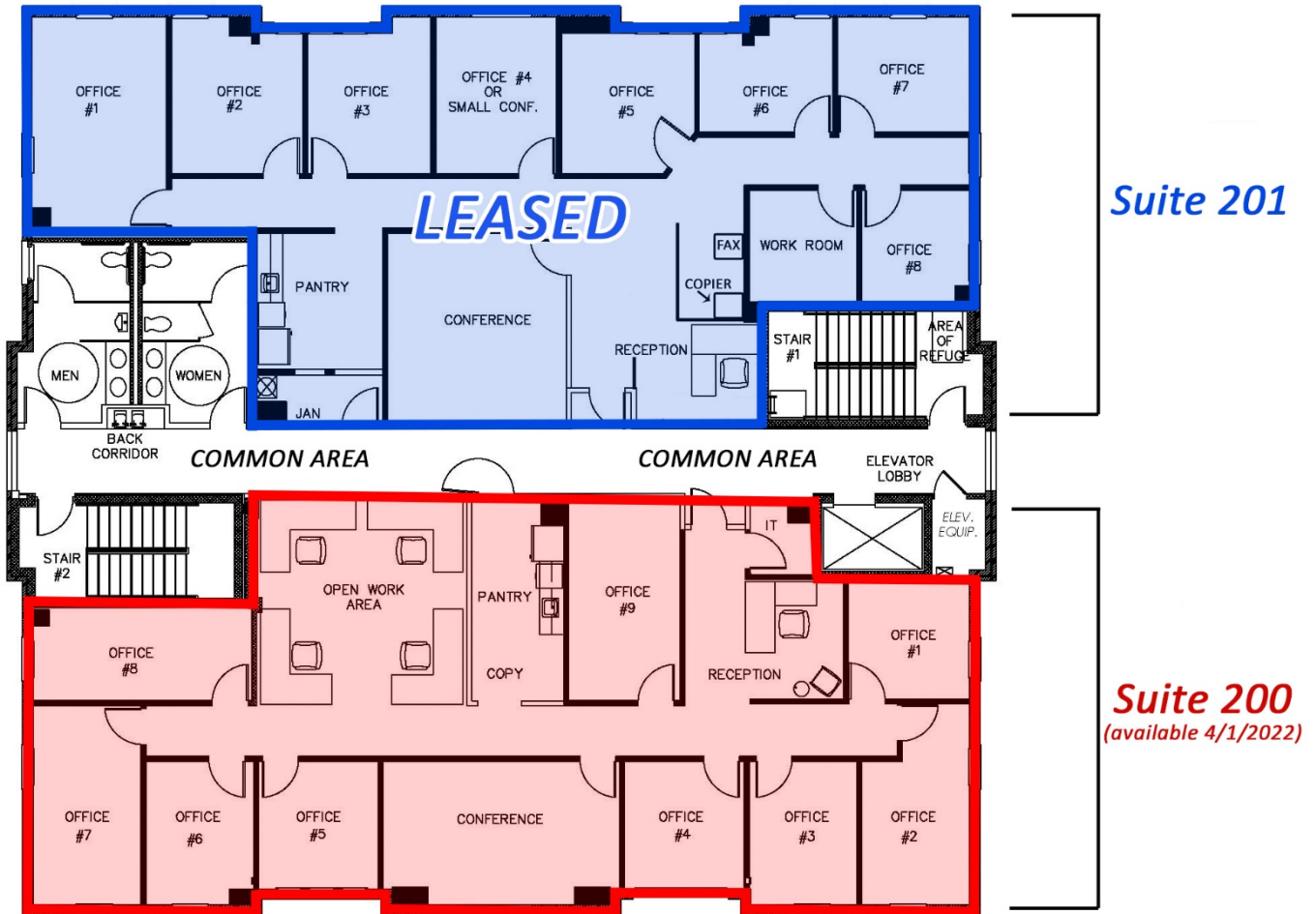


For more information, contact:

ANDY DALLAS, CCIM, SIOR
First Vice President
757 873 3661
andy.dallas@thalhimer.com

One BayPort Way, Suite 100
Newport News, VA 23606
www.thalhimer.com

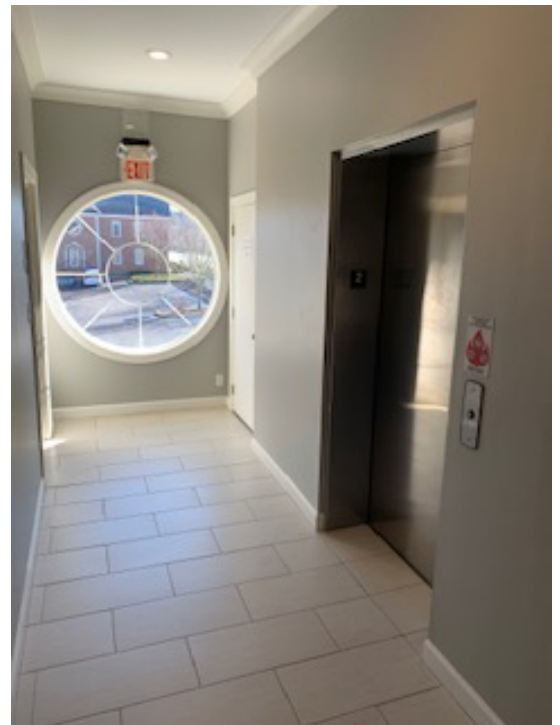
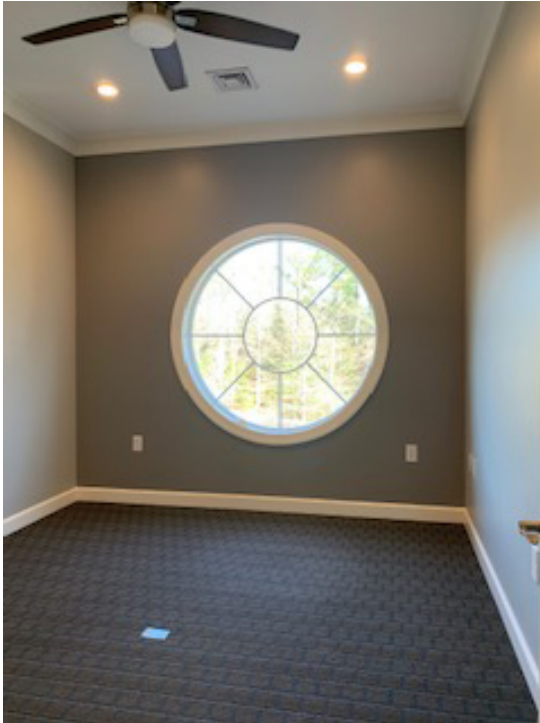
Floor Plan



For more information, contact:

ANDY DALLAS, CCIM, SIOR
First Vice President
757 873 3661
andy.dallas@thalhimer.com

One BayPort Way, Suite 100
Newport News, VA 23606
www.thalhimer.com



For more information, contact:

ANDY DALLAS, CCIM, SIOR
First Vice President
757 873 3661
andy.dallas@thalhimer.com

One BayPort Way, Suite 100
Newport News, VA 23606
www.thalhimer.com

Independently Owned and Operated / A Member of the Cushman & Wakefield Alliance

Cushman & Wakefield | Thalhimer © 2015. No warranty or representation, express or implied, is made to the accuracy or completeness of the information contained herein, and same is submitted subject to errors, omissions, change of price, rental or other conditions, withdrawal without notice, and to any special listing conditions imposed by the property owner(s). As applicable, we make no representation as to the condition of the property (or properties) in question.