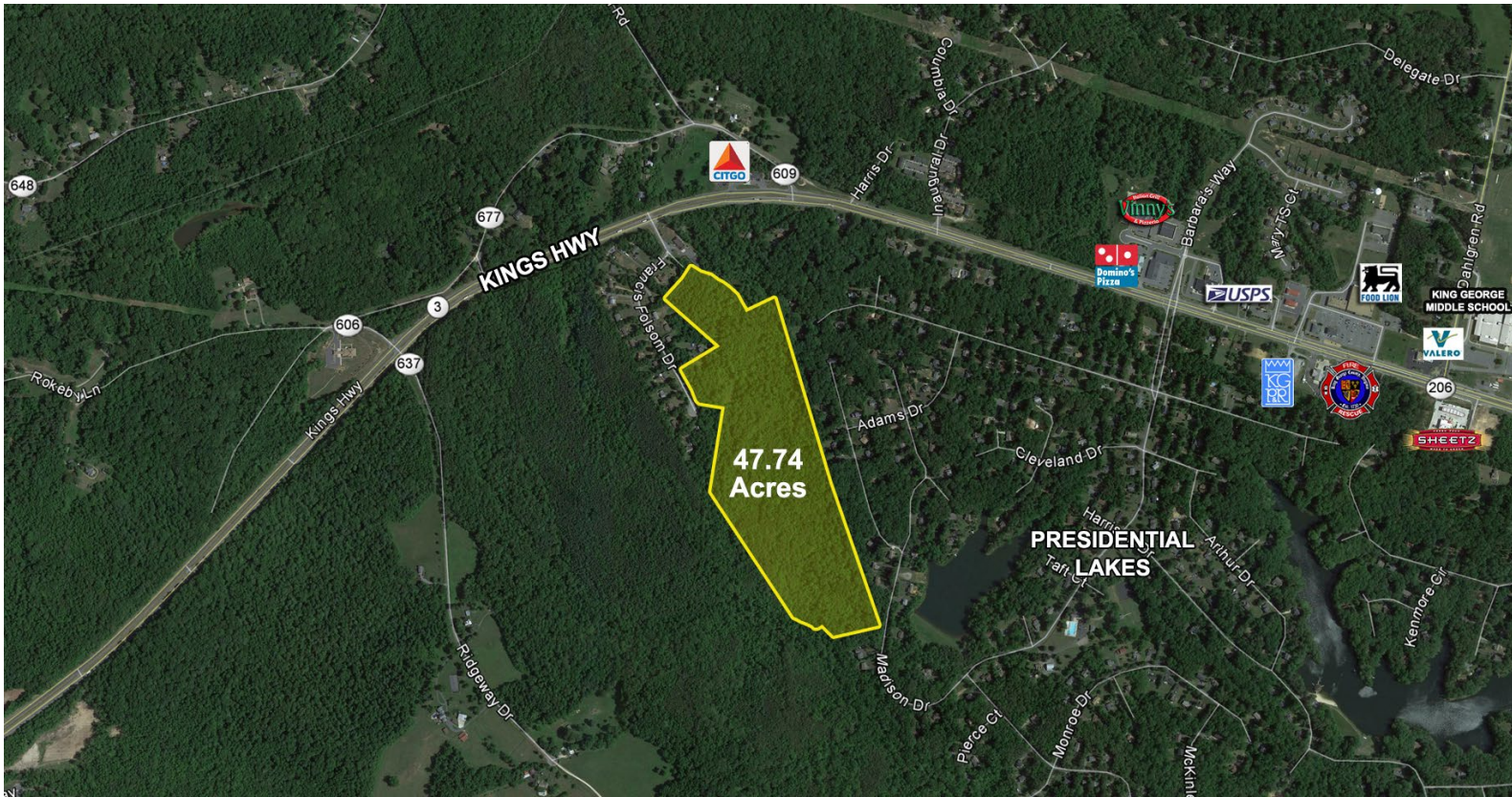


FOR SALE
Beaver Creek Land

Kings Highway | King George, VA 22485



Property Features

- 47.74 acres of land
- Engineered for 111 townhouse units and 28 single family homes
- Zoned R3 and R1
- Located just off Route 3

Nearby

Specifications	
Total Size	47.74 Acres
Asking Price	\$900,000
Timing	Available immediately



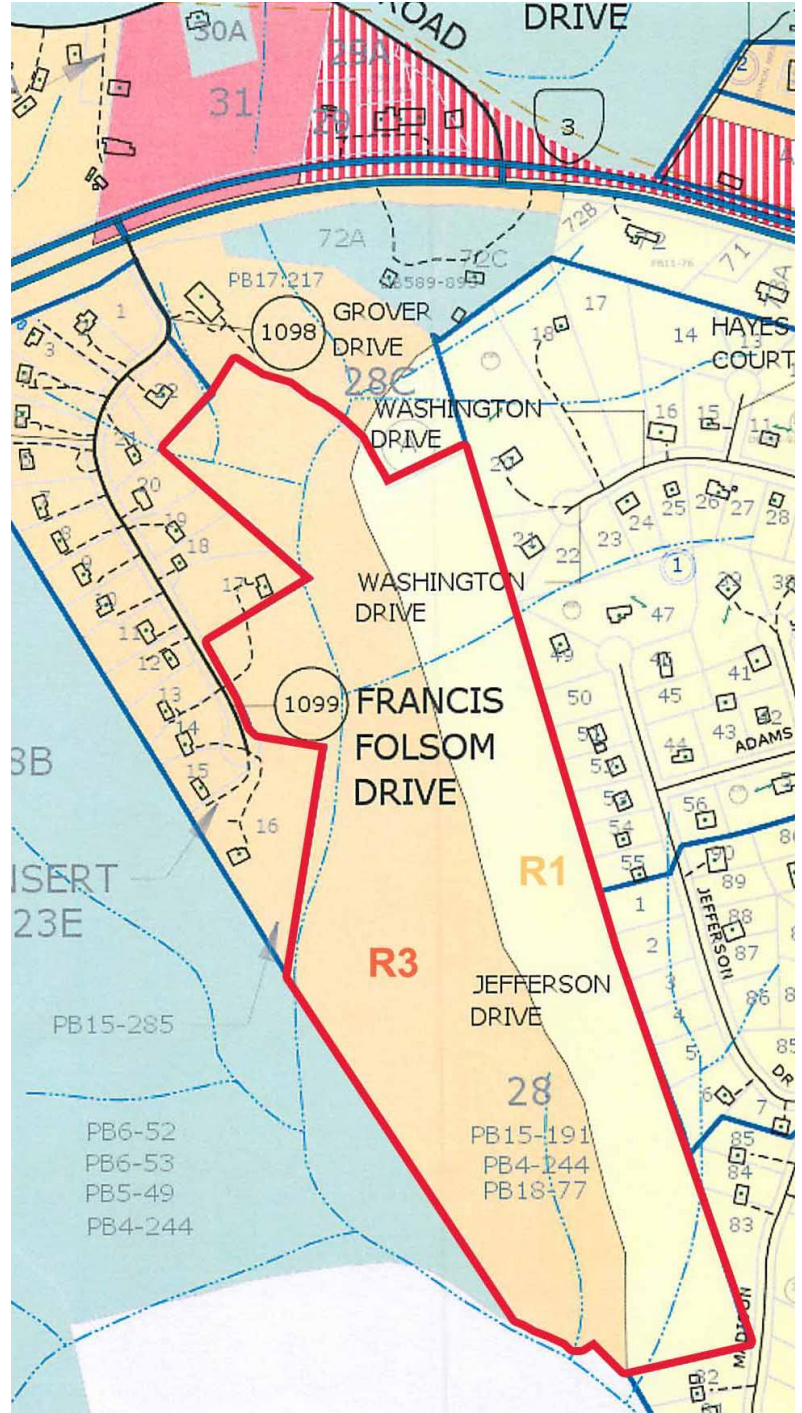
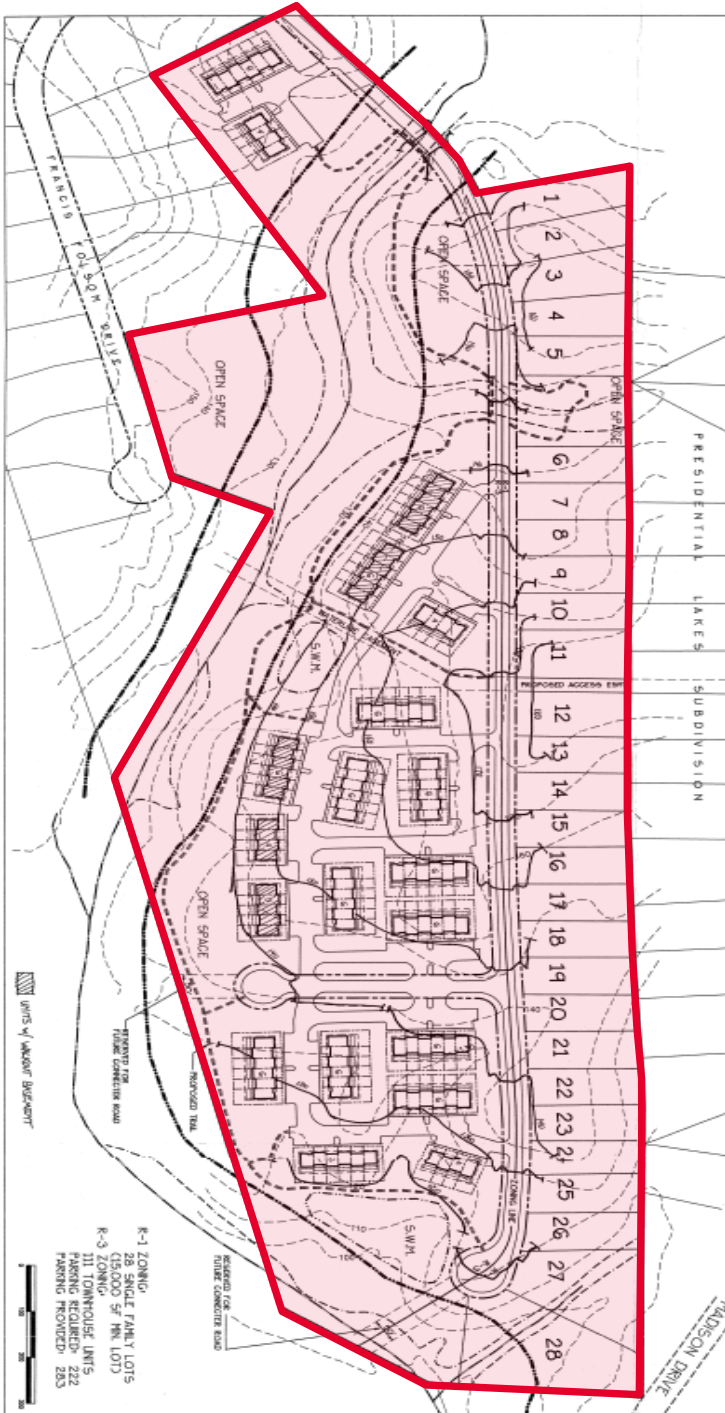
For more information, contact:

VIRGIL NELSON, CCIM
 540 322 4150
 virgil.nelson@thalhimer.com

Eagle Village
 1125 Emancipation Highway, Suite 350
 Fredericksburg, VA 22401
 www.thalhimer.com

FOR SALE
Beaver Creek Land

Kings Highway | King George, VA 22485



For more information, contact:

VIRGIL NELSON, CCIM
 540 322 4150
 virgil.nelson@thalhimer.com

Eagle Village
 1125 Emancipation Highway, Suite 350
 Fredericksburg, VA 22401
 www.thalhimer.com