



VIRTUAL TOUR

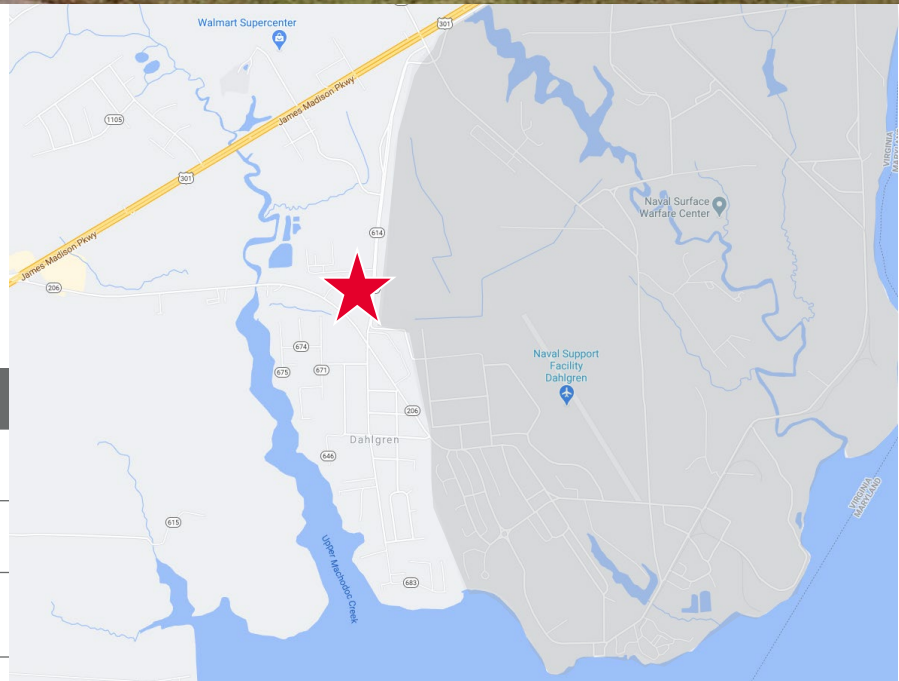


Property Features

- Located in Oak Manor Office Park
- Convenient to both Dahlgren Naval Base entrance gates
- Monument signage

Specifications

Available SF	2,000 SF
Timing	Available immediately
Rental Rate	\$18.00 PSF NNN



For more information, contact:

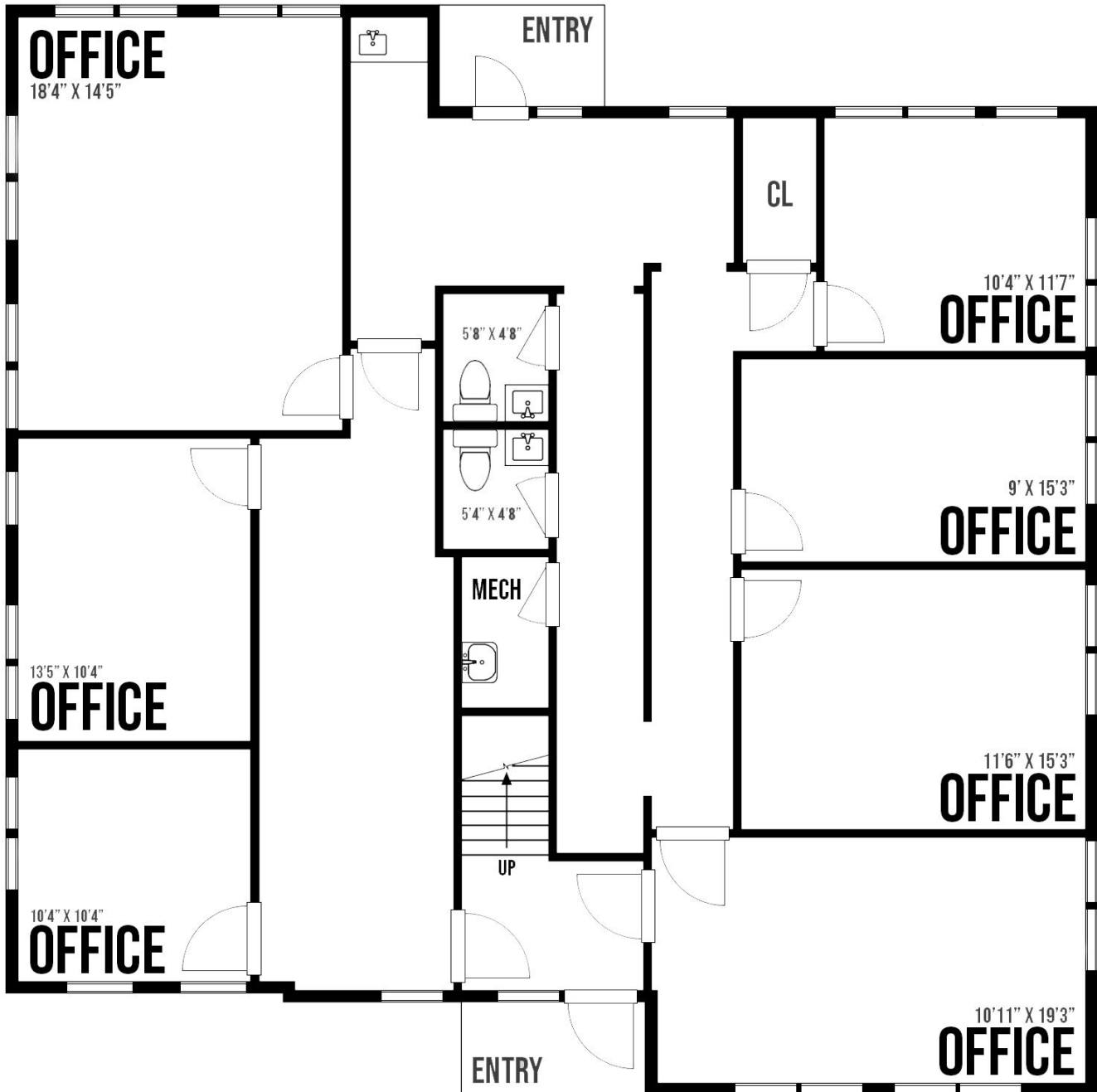
JAMIE SCULLY, CCIM
Senior Vice President
540 322 4140
jamie.scully@thalhimer.com

Eagle Village
1125 Emancipation Highway, Suite 350
Fredericksburg, VA 22401-8449
www.thalhimer.com

Independently Owned and Operated / A Member of the Cushman & Wakefield Alliance

Cushman & Wakefield | Thalhimer © 2022. No warranty or representation, express or implied, is made to the accuracy or completeness of the information contained herein, and same is submitted subject to errors, omissions, change of price, rental or other conditions, withdrawal without notice, and to any special listing conditions imposed by the property owner(s). As applicable, we make no representation as to the condition of the property (or properties) in question.

FLOOR PLAN



For more information, contact:

JAMIE SCULLY, CCIM
Senior Vice President
540 322 4140
jamie.scully@thalhimer.com

Eagle Village
1125 Emancipation Highway, Suite 350
Fredericksburg, VA 22401-8449
www.thalhimer.com



OAK PARK MANOR
 SCCI
 SIM VENTIONS
 HARRIS
 JRC
 PARSONS
 GENERAL DYNAMICS
 EOIR TECHNOLOGIES

Join Nearby Tenants			
SIM VENTIONS PARSON	SCCI GENERAL DYNAMICS	HARRIS EOIR TECHNOLOGIES	JRC

For more information, contact:

JAMIE SCULLY, CCIM
 Senior Vice President
 540 322 4140
jamie.scully@thalhimer.com

Eagle Village
 1125 Emancipation Highway, Suite 350
 Fredericksburg, VA 22401-8449
www.thalhimer.com