



### Property Features

- Brand new 56,400 sf Class A Office Building
- **Special Lease Rate: \$21.50/SF, Full Service**
- Situated on 3.3 acres with 189 parking spaces
- Entrance at signalized corner
- Located just off I-64 at the entrance to Oyster Point Park

### Available Suites

Suite	Square Footage
100	3,484 SF
130	3,782 SF

For more information, contact:

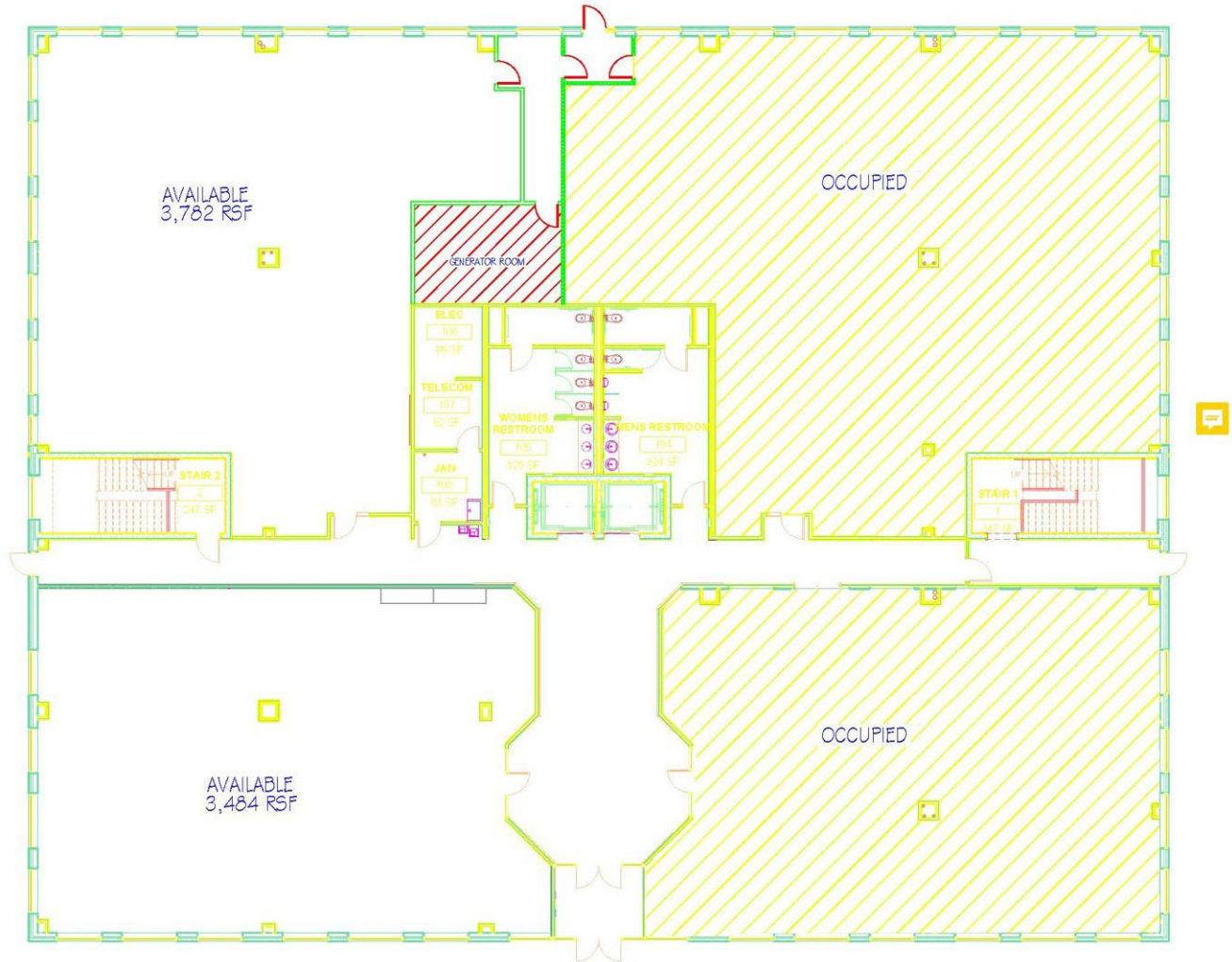
**TERESA NETTLES**  
Senior Vice President  
757 873 9268  
[teresa.nettles@thalhimer.com](mailto:teresa.nettles@thalhimer.com)

One BayPort Way, Suite 100  
Newport News, VA 23606  
[www.thalhimer.com](http://www.thalhimer.com)

Independently Owned and Operated / A Member of the Cushman & Wakefield Alliance

Cushman & Wakefield | Thalhimer © 2015. No warranty or representation, express or implied, is made to the accuracy or completeness of the information contained herein, and same is submitted subject to errors, omissions, change of price, rental or other conditions, withdrawal without notice, and to any special listing conditions imposed by the property owner(s). As applicable, we make no representation as to the condition of the property (or properties) in question.

Proposed Suites



**2 BAYPORT WAY**  
 FIRST FLOOR

DRAWN BY: K.L.MONETTE 757.214.1345

For more information, contact:

**TERESA NETTLES**  
 Senior Vice President  
 757 873 9268  
[teresa.nettles@thalhimer.com](mailto:teresa.nettles@thalhimer.com)

One BayPort Way, Suite 100  
 Newport News, VA 23606  
[www.thalhimer.com](http://www.thalhimer.com)