



THALHIMER

OFFICE/RETAIL FOR LEASE
Village Shopping Center
7029 Three Chopt Road | Richmond, Virginia

5,000 - 10,243 SF FOR LEASE



Office Space in West End's Premier Shopping Center

For more information, contact:

AMY BRODERICK
Senior Vice President
804 344 7189
amy.broderick@thalhimer.com

JIM ASHBY
Senior Vice President
804 697 3455
jim.ashby@thalhimer.com

Thalhimer Center
11100 W. Broad Street
Glen Allen, VA 23060
www.thalhimer.com

Independently Owned and Operated / A Member of the Cushman & Wakefield Alliance

Cushman & Wakefield \ Thalhimer © 2015. No warranty or representation, expressed or implied, is made to the accuracy or completeness of the information contained herein, and same is submitted subject to errors, omissions, change of price, rental or other conditions, withdrawal without notice, and to any special listing conditions imposed by the property owner(s). As applicable, we make no representation as to the condition of the property (or properties) in question.

OFFICE/RETAIL FOR LEASE

Village Shopping Center

7029 Three Chopt Road | Richmond, Virginia

Property Features

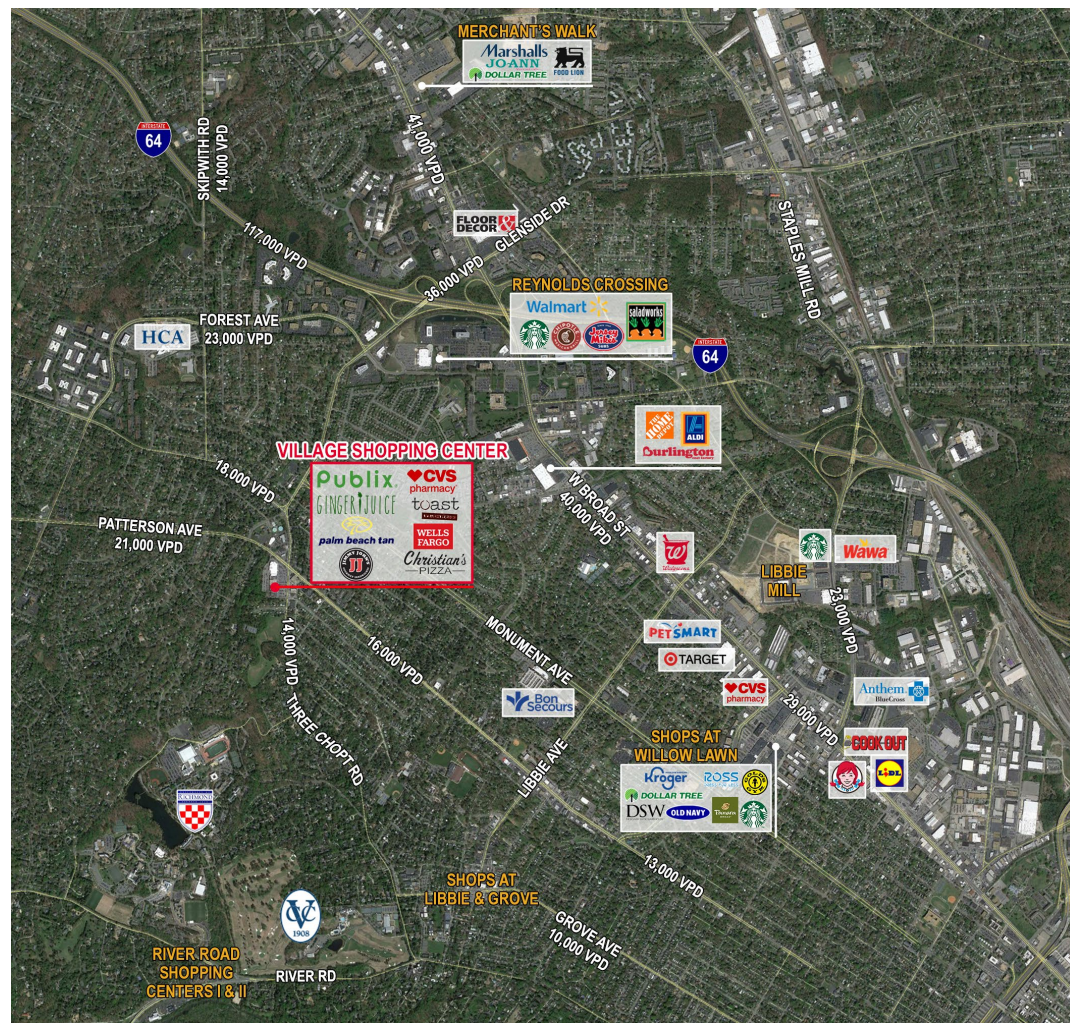
- 5,000 - 10,243 SF OFFICE FOR LEASE - SECOND FLOOR OFFICE WITH ELEVATOR ACCESS
- Updated exterior facade, interior to be designed by the tenant
- Located in a bustling mixed-use environment - neighbors include Publix, Starbucks, Ginger Juice, Toast and more!
- Near University of Richmond with convenient access to Richmond's West End
- Parking available surrounding the building

Your New Neighbors



Demographics

	1 Mile	3 Miles	5 Miles
Population	12,017	79,105	225,921
Avg. HH Income	\$107,520	\$110,963	\$101,801
Daytime Population	12,017	79,105	225,921



For more information, contact:

AMY BRODERICK

Senior Vice President
804 344 7189

amy.broderick@thalhimer.com

JIM ASHBY

Senior Vice President
804 697 3455

jim.ashby@thalhimer.com

Thalhimer Center
11100 W. Broad Street
Glen Allen, VA 23060
www.thalhimer.com



AVAILABLE SPACE

CURRENT RETAILERS

01	VILLAGE CLEANERS	3,165 SF
02	AVAILABLE	2,156 SF
03	CHRISTIAN'S PIZZA	2,717 SF
04	JIMMY JOHN'S GOURMET SANDWICHES	2,156 SF
05	TOAST	3,266 SF
06	AVAILABLE	3,811 SF
07	AVAILABLE	3,440 SF
07-A	ESCAPE NAIL & SPA	3,440 SF
08	BELL GREEK	2,229 SF
09	TOWNE BANK	2,229 SF
10	VA ABC PACKAGE STORE	3,003 SF
11	BLUE COW ICE CREAM	1,772 SF
12	WELLS FARGO	397 SF
13	BEYOND THE FRINGE HAIR	1,587 SF
14	VILLAGE SHOE REPAIR	936 SF
15	AVAILABLE	577 SF
16	AVAILABLE	1,633 SF
17	HARU SUSHI	1,319 SF
18	GINGER JUICE	2,298 SF
19	CVS	11,700 SF
23	PUBLIX	45,023 SF
24	AVAILABLE	10,243 SF

For more information, contact:

AMY BRODERICK
Senior Vice President
804 344 7189
amy.broderick@thalhimer.com

JIM ASHBY
Senior Vice President
804 697 3455
jim.ashby@thalhimer.com

Thalhimer Center
11100 W. Broad Street
Glen Allen, VA 23060
www.thalhimer.com



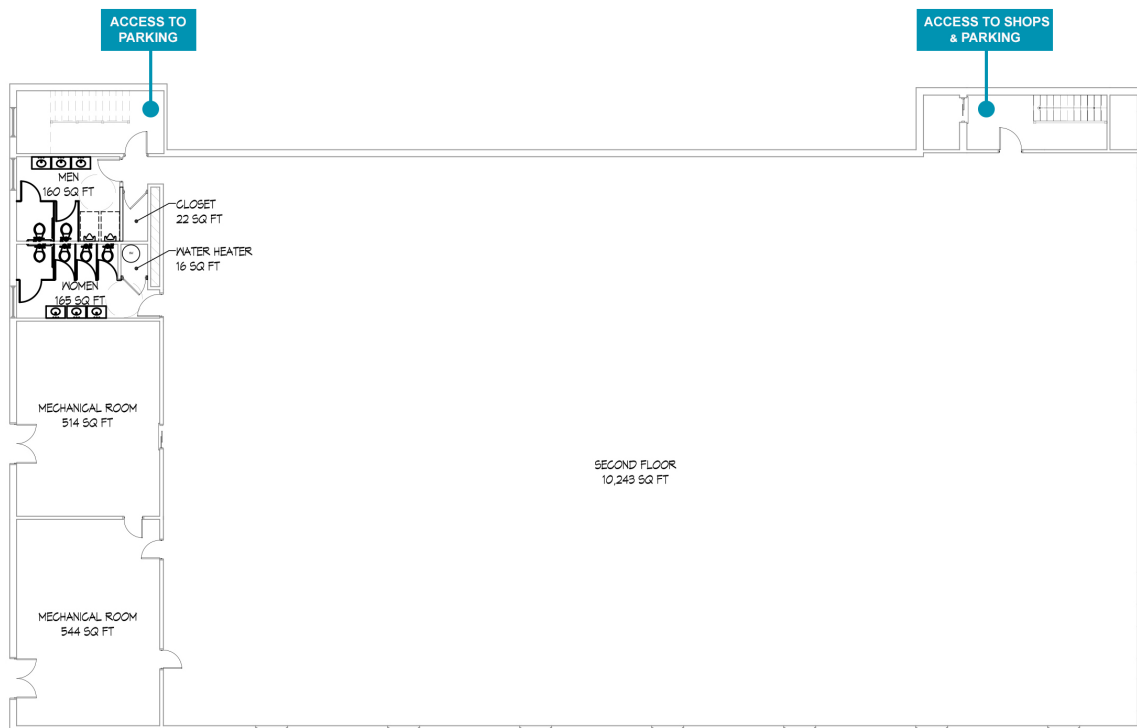
THALHIMER

OFFICE/RETAIL FOR LEASE

Village Shopping Center

7029 Three Chopt Road | Richmond, Virginia

Proposed Plan



For more information, contact:

AMY BRODERICK
Senior Vice President
804 344 7189
amy.broderick@thalhimer.com

JIM ASHBY
Senior Vice President
804 697 3455
jim.ashby@thalhimer.com

Thalhimer Center
11100 W. Broad Street
Glen Allen, VA 23060
www.thalhimer.com

Independently Owned and Operated / A Member of the Cushman & Wakefield Alliance

Cushman & Wakefield | Thalhimer © 2015. No warranty or representation, expressed or implied, is made to the accuracy or completeness of the information contained herein, and same is submitted subject to errors, omissions, change of price, rental or other conditions, withdrawal without notice, and to any special listing conditions imposed by the property owner(s). As applicable, we make no representation as to the condition of the property (or properties) in question.