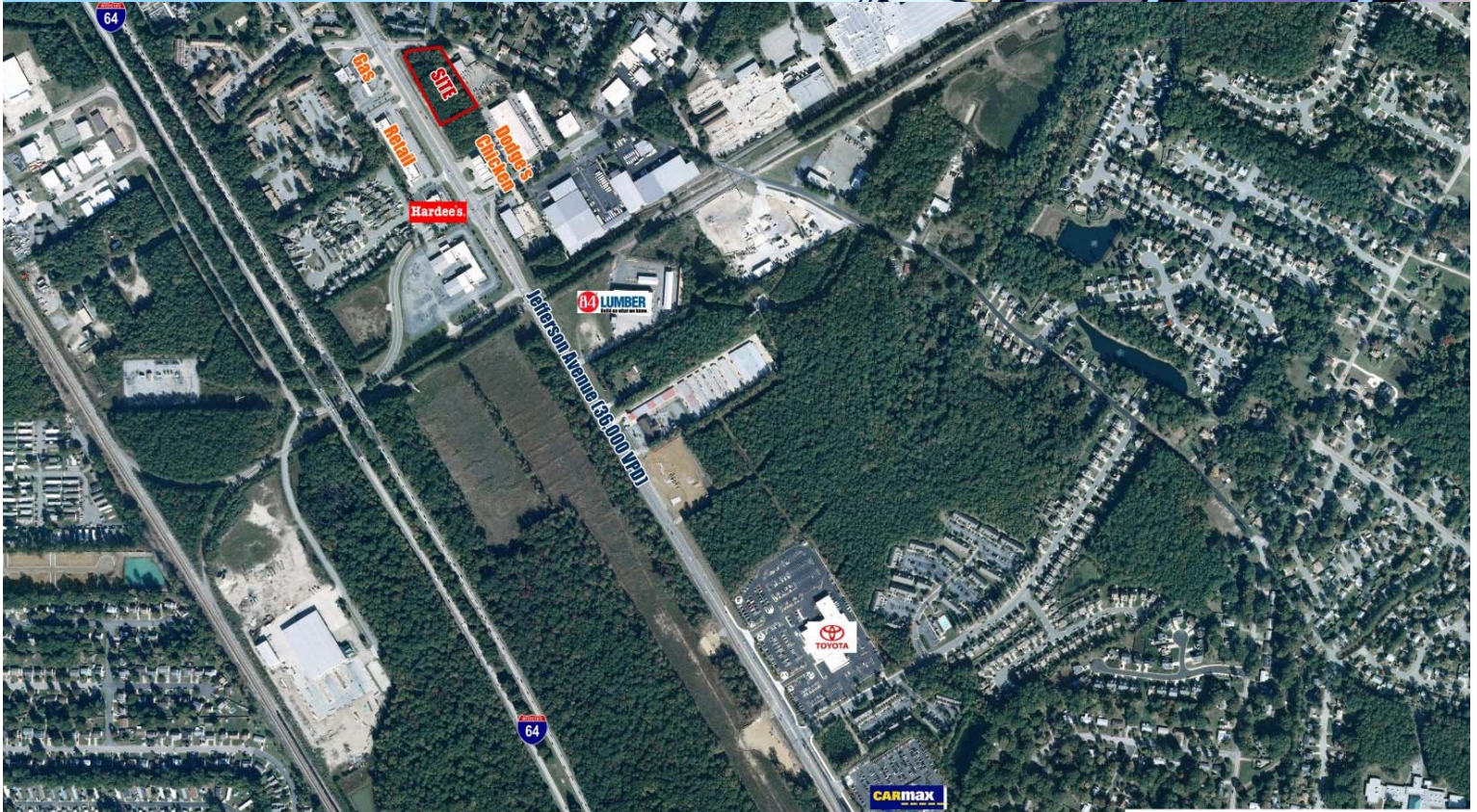


LAND FOR SALE

Jefferson Avenue & Shields Road

Newport News, VA



Property Features

- \$750,000 for 0.97 corner parcel
- \$575,000 for 0.82 inside parcel
- Traffic counts 36,000+ on Jefferson Ave.
- Signalized intersection across from Hardee's
- Blue highway signs available
- Ideal for gas station or strip center
- Strong quick service restaurant location
- May be expanded to 2 acres for retail

Demographics

	1 Mile	3 Miles	5 Miles
Population	10,259	57,925	106,970
No. of Households	3,791	21,258	40,176
Avg. HH Income	\$58,038	\$62,405	\$69,748
Daytime Population	1,980	19,114	39,329

For more information, contact:

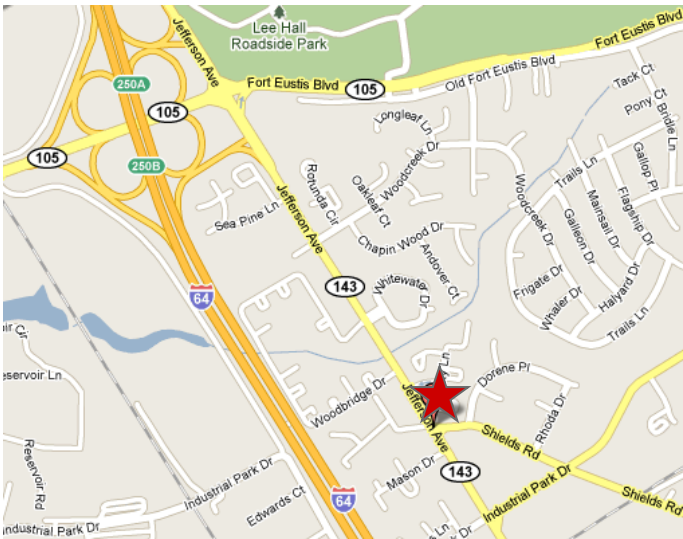
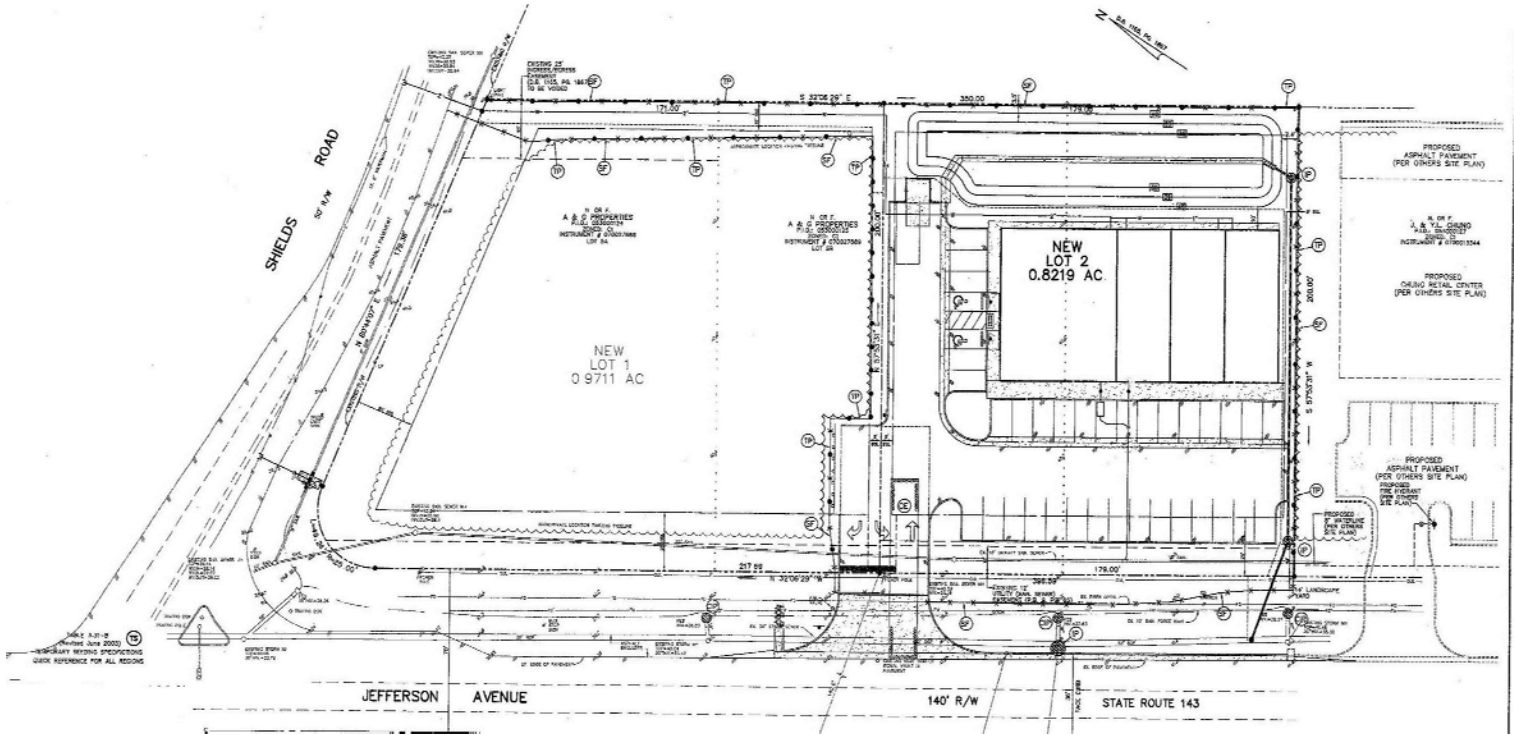
DREW HAYNIE
First Vice President
757 873 9004
drew.haynie@thalhimer.com

One BayPort Way, Suite 100
Newport News, VA 23606
www.thalhimer.com

LAND FOR SALE

Jefferson Avenue & Shields Road

Newport News, VA



For more information, contact:

DREW HAYNIE
First Vice President
757 873 9004
drew.haynie@thalhimer.com

One BayPort Way, Suite 100
Newport News, VA 23606
www.thalhimer.com