

THE SHOPPES AT SPRING CREEK

I-64 & Route 15 | Zion Crossroads (Louisa County), VA

RETAIL PARCELS FOR LEASE



Annie O'Connor
First Vice President
804 697 3451
annie.oconnor@thalhimer.com

Alex Wotring
Senior Vice President
804 344 7163
alex.wotring@thalhimer.com



THE SHOPPES AT SPRING CREEK

I-64 & Route 15 | Zion Crossroads (Louisa County), VA

FEATURES

- ± 1.10 ACRE PAD SITE AVAILABLE
- 6,200 SF OUTPARCEL AVAILABLE
- High visibility on Route 15
- Located in front of high-performing Walmart & Lowe's Centers
- Easy access to Interstate 64
- Across from Spring Creek residential community
- 8,300 VPD - James Madison Highway (Route 15)
- 36,000 VDP - Interstate 64

TENANTS & NEARBY RETAILERS



HIGHLIGHTS



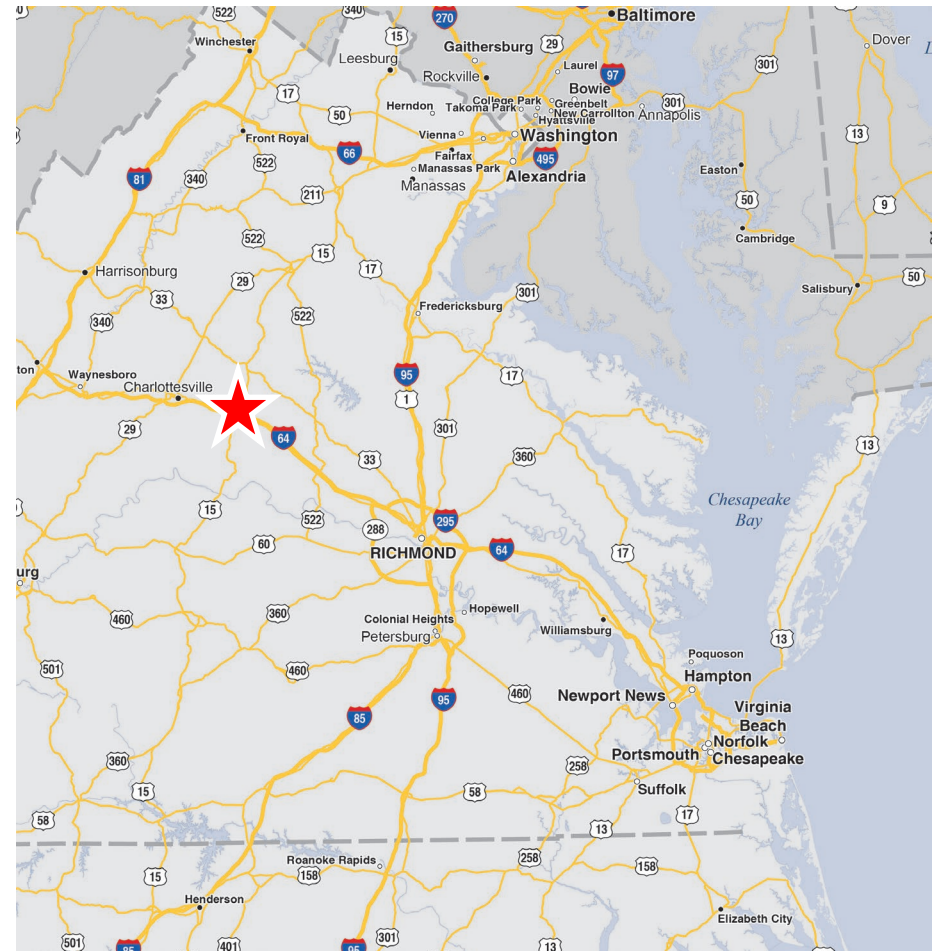
87,413
POPULATION



\$101,228
**AVERAGE
INCOME**



39,872
**ESTIMATED
HOUSEHOLDS**



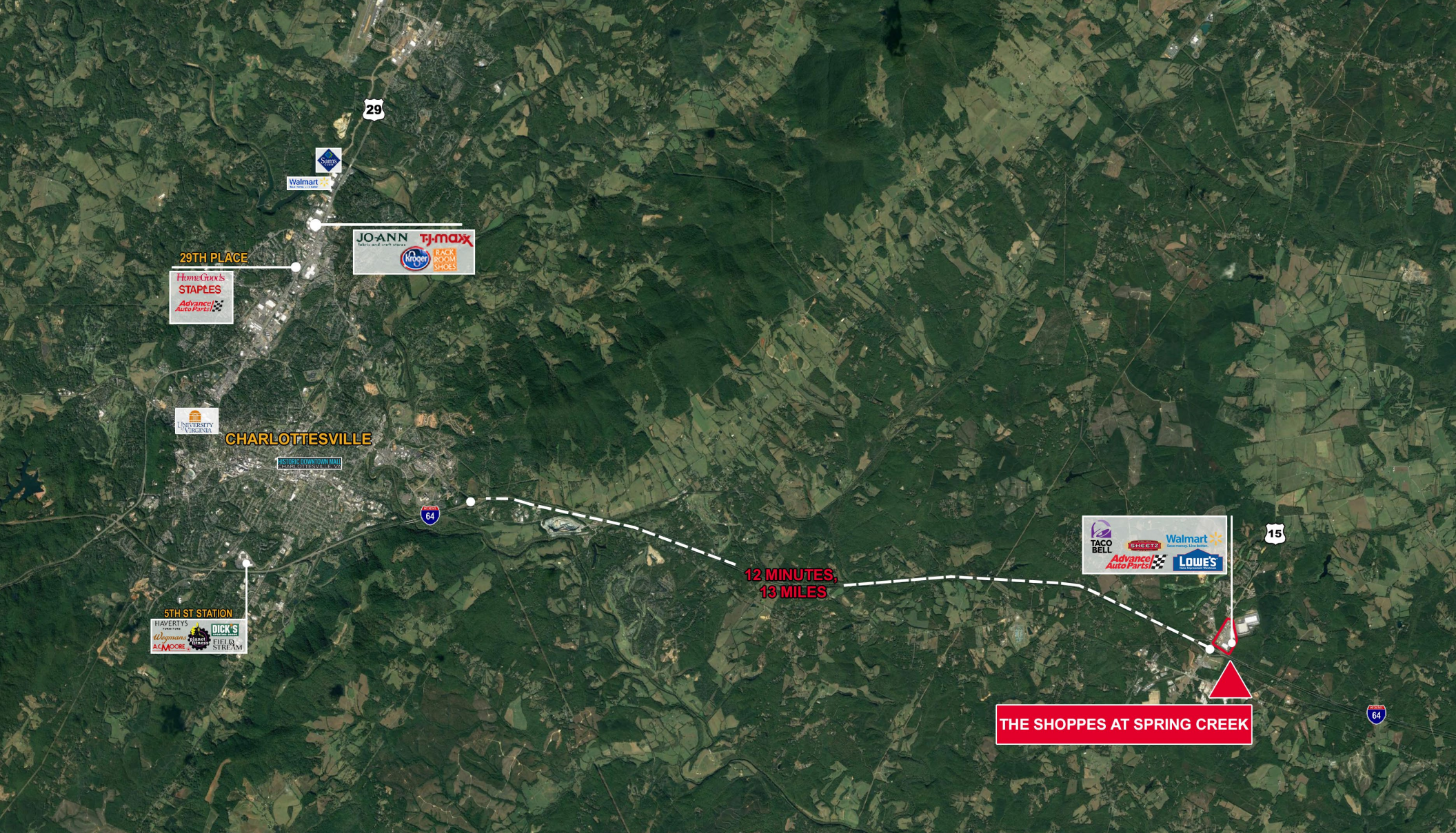
DEMOGRAPHICS

	5 MILE	10 MILES	15 MILES
Population	9,514	36,100	87,413
Avg. Household Income	\$90,840	\$101,228	\$98,102
Est. Households	3,464	15,256	39,872

THE SHOPPES AT SPRING CREEK

I-64 & Route 15 | Zion Crossroads (Louisa County), VA





Annie O'Connor
 First Vice President
 804 697 3451
annie.oconnor@thalhimer.com

Alex Wotring
 Senior Vice President
 804 344 7163
alex.wotring@thalhimer.com

Independently Owned and Operated / A Member of the Cushman & Wakefield Alliance

Cushman Wakefield | Thalhimer © 2025. No warranty or representation, express or implied, is made to the accuracy or completeness of the information contained herein, and same is submitted subject to errors, omissions, change of price, rental or other conditions, withdrawal without notice, and to any special listing conditions, imposed by the property owner(s). As applicable, we make no representation as to the condition of the property (or properties) in question.

Thalhimer Center
 11100 W. Broad Street, Glen Allen, VA 23060
www.thalhimer.com

