

3300 SOUTH BUILDING

397 LITTLE NECK ROAD, SUITE 310

Virginia Beach, Virginia 23452

SUBLEASE AVAILABLE 1,875 SF



BELOW MARKET RENT

JOSH FULTON

Senior Associate

757 213 4162

josh.fulton@thalhimer.com

The Town Center of Virginia Beach

222 Central Park Avenue, Suite 1500

Virginia Beach, VA 23462

757 499 2900 | Thalhimer.com



THALHIMER



PROPERTY DETAILS | 397 LITTLE NECK ROAD

Available SF: 1,875 SF

Rental Rate: 16.50 Full Service

Term Thru: 10/31/2024

- Immediate availability, plug in play sublease opportunity
- Central Virginia Beach location only minutes from I-264 and The Town Center of Virginia Beach

Building Size: 51,216 SF

Year Built: 1998; 2006 renovation

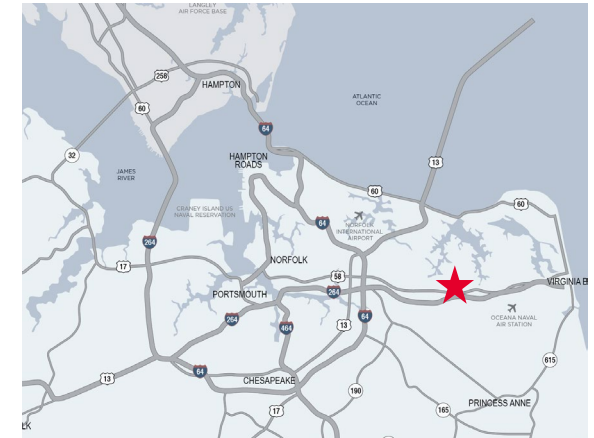
Construction: Masonry

Location: Little Neck Office Park

Access: Direct access to I-264 (Virginia Beach/Norfolk Expressway)

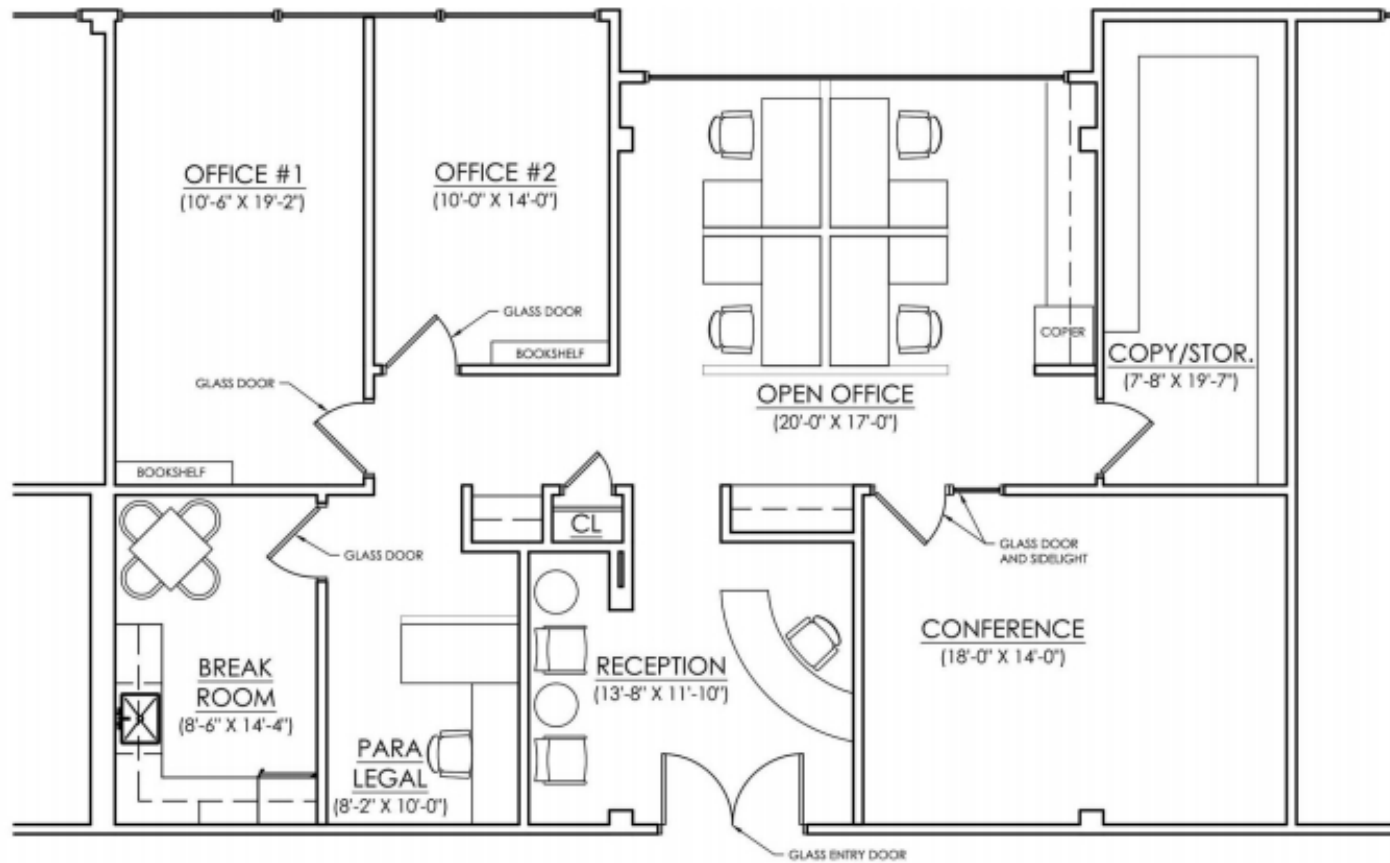
Parking: 605 Surface spaces | 5.0/1,000

Amenities: On-site Health Club available for tenants



SUITE 310

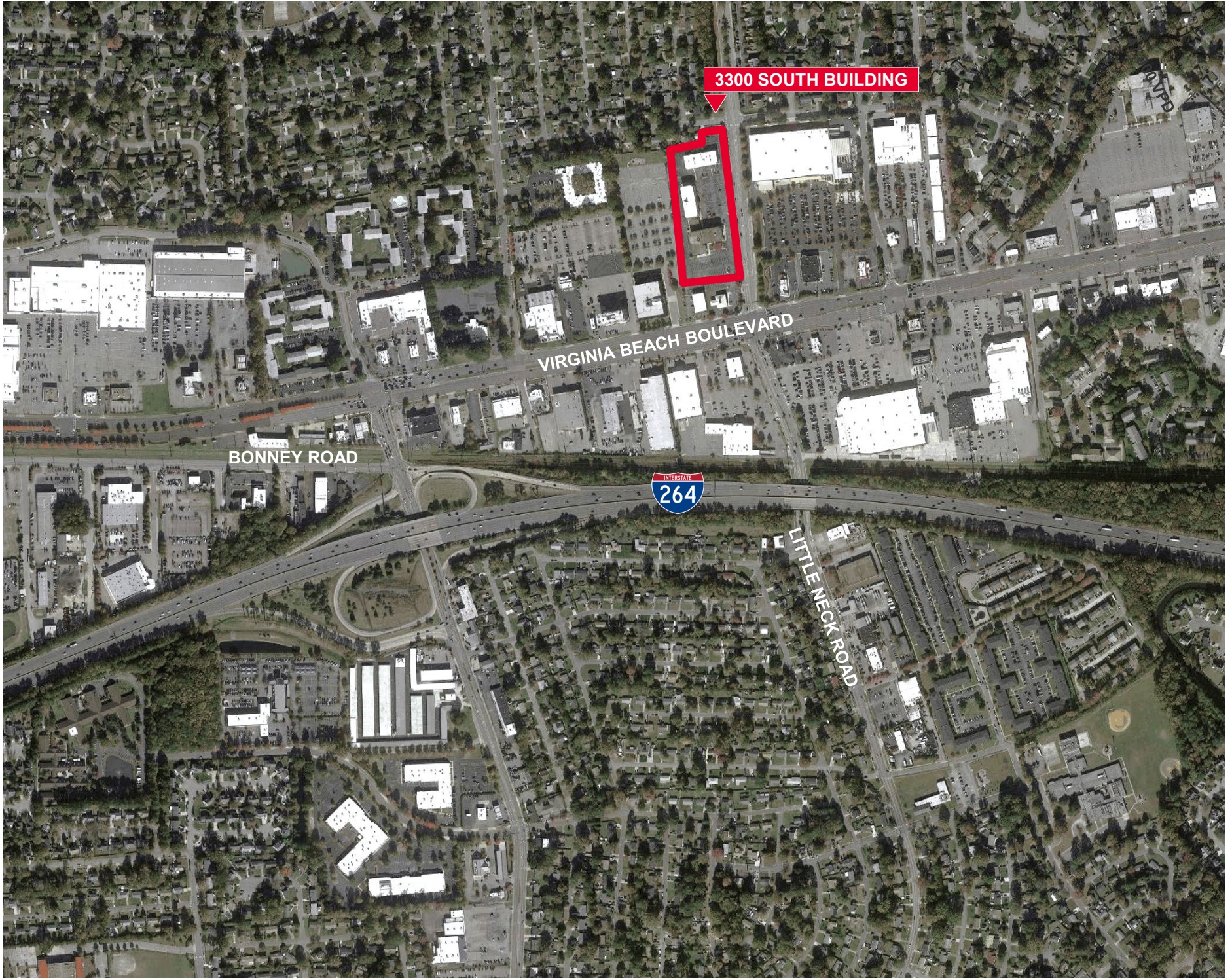
1,875 SF



KEY PLAN



SURROUNDING AREA





JOSH FULTON
Senior Associate
757 213 4162
josh.fulton@thalhimer.com

The Town Center of Virginia Beach
222 Central Park Ave., Suite 1500
Virginia Beach, VA 23462
www.thalhimer.com