



Property Features

- 4.523 AC available, 2 parcels
- 515.33' frontage on 460 eastbound at Crossover, Town of Bedford
- Zoned B-2 commercial
- 2 wells, 2 septs on site
- 12" waterline along 460W
- Dwelling & Manufactured home, both "As Is"
- Listing price: \$375,000



Demographics

	1 Mile	3 Miles	5 Miles
Population	298	7,397	12,420
# of Households	134	3,234	5,492
Avg. HH Income	\$76,677	\$69,486	\$72,620
Daytime Population	516	7,343	12,747

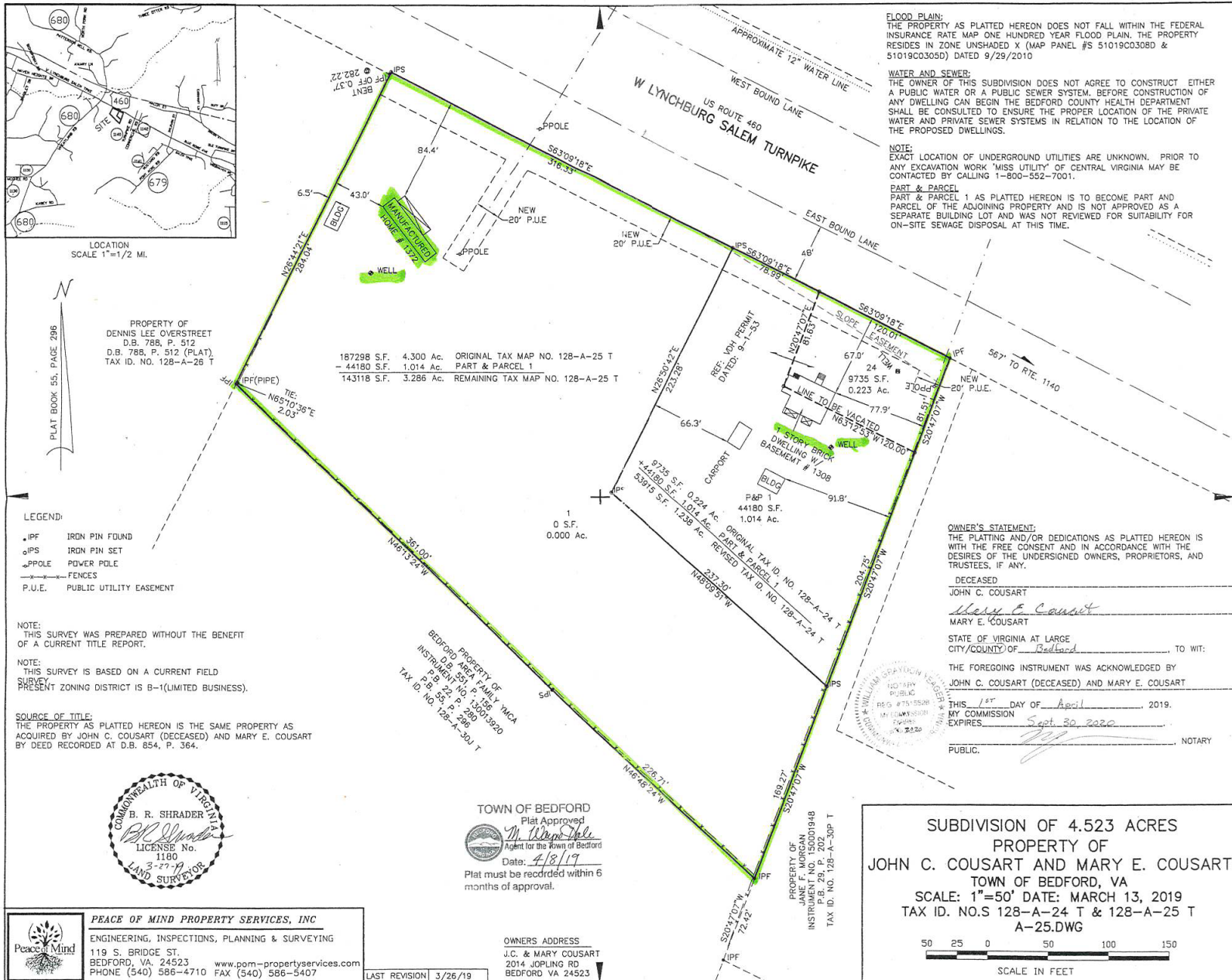
- 19,000VPD

For more information, contact:

KRISTY W. MILTON
Commercial Sales & Leasing
434 455 2308
kristy.milton@thalhimer.com

Coffee Crossing
6000 Boonsboro Road, Suite A
Lynchburg, VA 24503
www.thalhimer.com

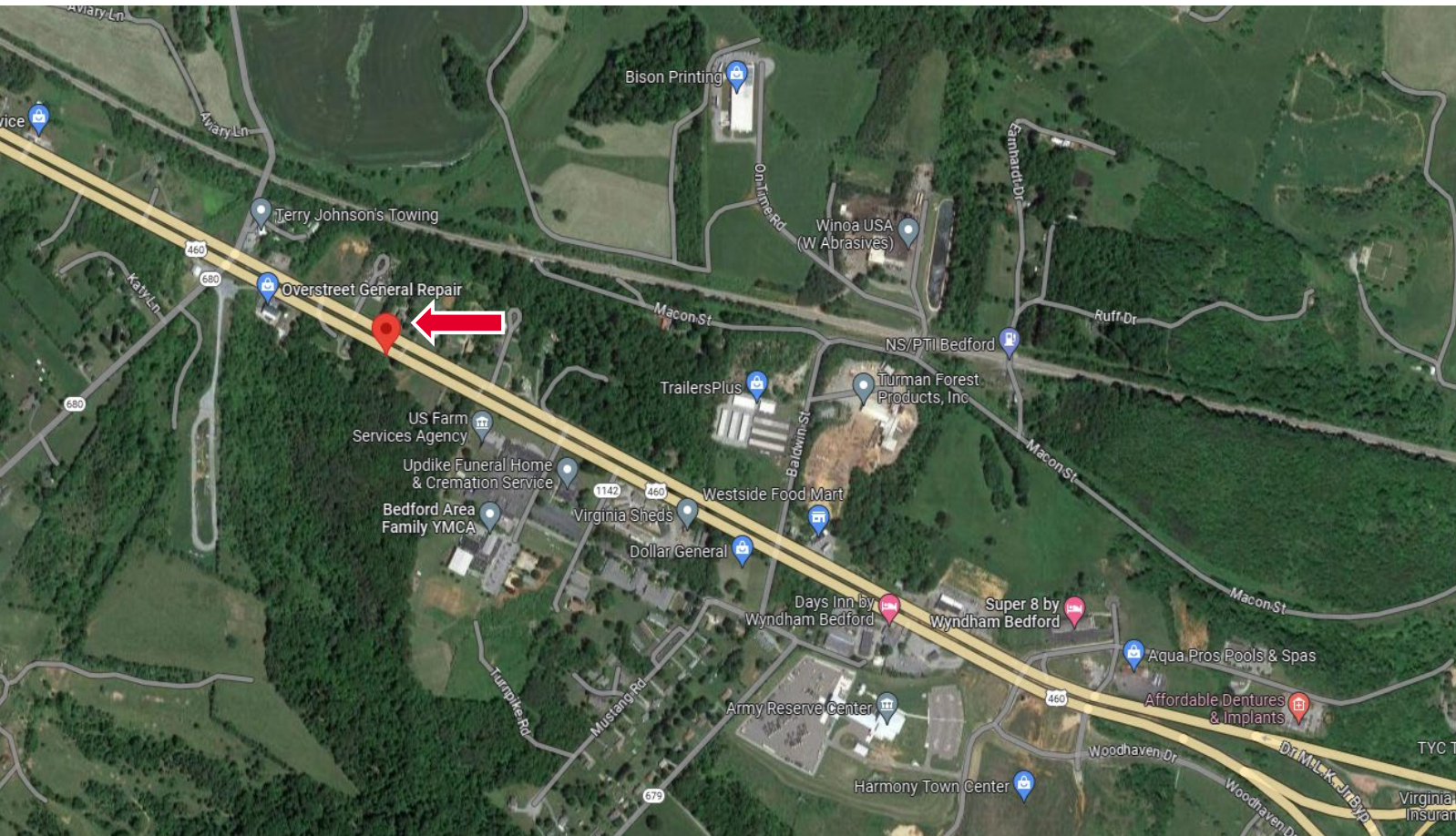
COMMERCIAL LAND FOR SALE
1372 W Lynchburg Salem Turnpike
Bedford, VA 24523



For more information, contact:

KRISTY W. MILTON
Commercial Sales & Leasing
434 455 2308
kristy.milton@thalhimer.com

Coffee Crossing
6000 Boonsboro Road, Suite A
Lynchburg, VA 24503
www.thalhimer.com



For more information, contact:

KRISTY W. MILTON
Commercial Sales & Leasing
434 455 2308
kristy.milton@thalhimer.com

Coffee Crossing
6000 Boonsboro Road, Suite A
Lynchburg, VA 24503
www.thalhimer.com

Independently Owned and Operated / A Member of the Cushman & Wakefield Alliance

Cushman & Wakefield | Thalhimer © 2015. No warranty or representation, express or implied, is made to the accuracy or completeness of the information contained herein, and same is submitted subject to errors, omissions, change of price, rental or other conditions, withdrawal without notice, and to any special listing conditions imposed by the property owner(s). As applicable, we make no representation as to the condition of the property (or properties) in question.