

Building Signage Available

CLASS A OFFICE BUILDING
FOR LEASE

500 W 21ST STREET
NORFOLK, VA 23517

2,420 – 5,920 SF
AVAILABLE

GHENT SUBMARKET

ROB WRIGHT
Senior Vice President
757 499 2896
rob.wright@thalhimer.com

The Town Center of Virginia Beach
222 Central Park Avenue, Suite 1500
Virginia Beach, Virginia 23462
757 499 2900
thalhimer.com

PROPERTY DETAILS

Address: 500 W. 21st Street
Norfolk, VA 23517

Year Built: 2011

Building Size: 17,306 SF

Class: A

Land Area: 0.92 Acres

Stories: Three (3)

Signage: Building signage available

Construction: Reinforced-concrete slab on compacted fill; Brick, glass, and masonry components

Parking: 66 surface spaces (3.8/1,000)

Zoning: C-C (Community Commercial)
21st Street Pedestrian Commercial Overlay

Security: 24/7 fob security system; security cameras

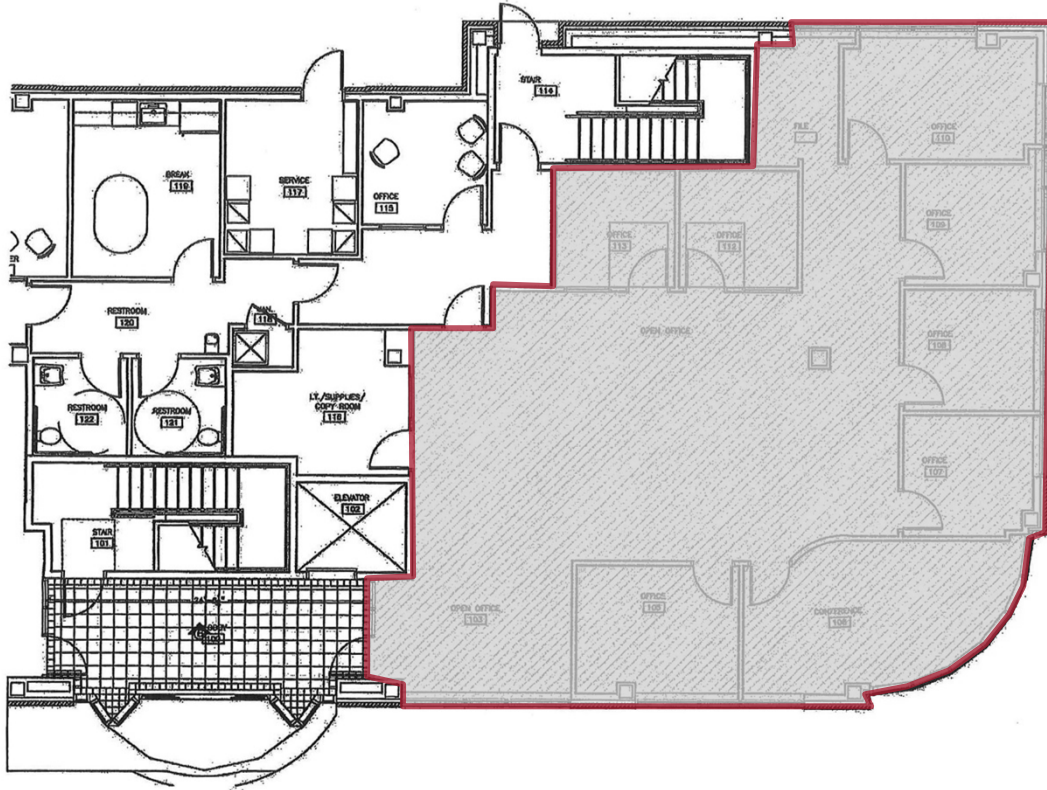
Utilities: Dominion Power; City of Norfolk

Available: Suite 102 – 2,420 SF
Suite 200 – 5,920 SF

Lease Rate: \$28.00 SF; Full Service



SUITE 102 | 2,420 RSF



SUITE 200 | 5,920 RSF





LOCATED IN THE HEART OF THE
HISTORIC GHENT DISTRICT NEAR DOWNTOWN NORFOLK



IN **CLOSE PROXIMITY** TO HAMPTON ROAD'S LARGEST
MEDICAL COMPLEX—SENTARA NORFOLK GENERAL, CHKD, AND
EASTERN VIRGINIA MEDICAL SCHOOL



75% OF THE CITY'S RESIDENTS LIVE WITHIN A FIVE-MILE
RADIUS OF GHENT



PART OF THE
**21ST STREET PEDESTRIAN COMMERCIAL
OVERLAY DISTRICT**



GHENT IS HOME TO **HAMPTON ROADS ARTS
DISTRICT** INCLUDING THE CHRYSLER MUSEUM, HARRISON
OPERA HOUSE, AND THE NARO THEATER





EVMS EVMS
 580 STUDENTS & 1,510 FACULTY/STAFF
 Children's Hospital of the King's Daughters
 206 HOSPITAL BEDS
 SENTARA
 525 HOSPITAL BEDS

CONTACT

ROB WRIGHT

Senior Vice President
 757 499 2896
 rob.wright@thalhimer.com



The Town Center of Virginia Beach
 222 Central Park Avenue, Suite 1500
 Virginia Beach, Virginia 23462
 757 499 2900
 thalhimer.com