

11719-B Jefferson Ave.

OYSTER POINT COMMONS / NEWPORT NEWS



CUSHMAN &
WAKEFIELD

THALHIMER

For Lease



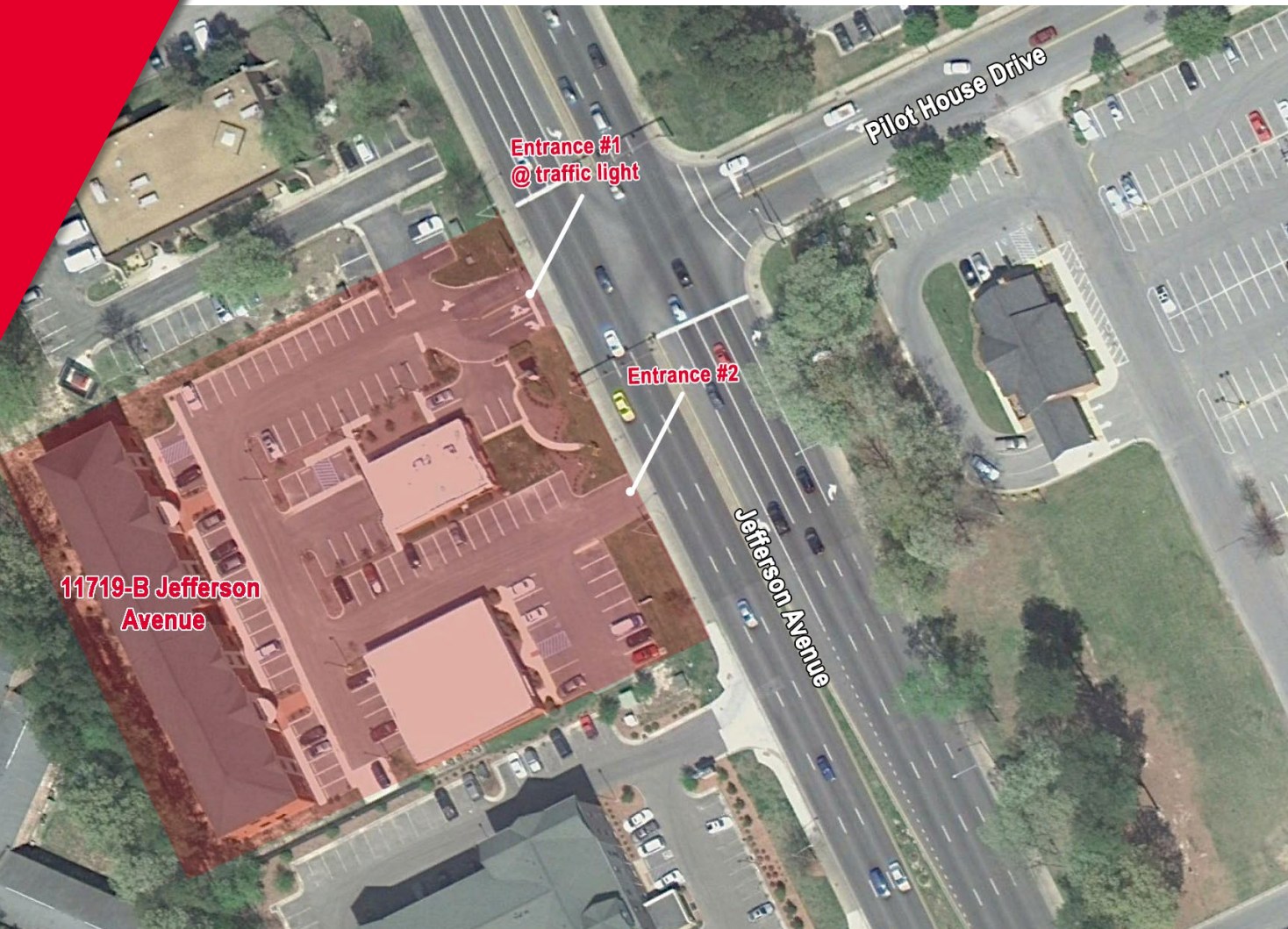
11719-B Jefferson Ave.

OYSTER POINT COMMONS / NEWPORT NEWS



CUSHMAN &
WAKEFIELD

THALHIMER



COMMENTS

- Suites available on the second floor ranging from 1,400 – 11,000 RSF
- 2 story building w/ 2 entrances
- Located at signalized light on the corner of Jefferson Avenue & Pilot House Drive
- Directory signage at door & street entrances
- Building signage available for full floor tenant
- Space amenities include an access card access system, upgraded FIOS and separately zoned HVAC unties
- Lease Rate: \$16.50/SF, Full Service
- Located in close proximity to City Center & I-64
- Abundant parking
- Security & Fire Alarm with video monitoring in common areas & parking

11719-B Jefferson Ave.

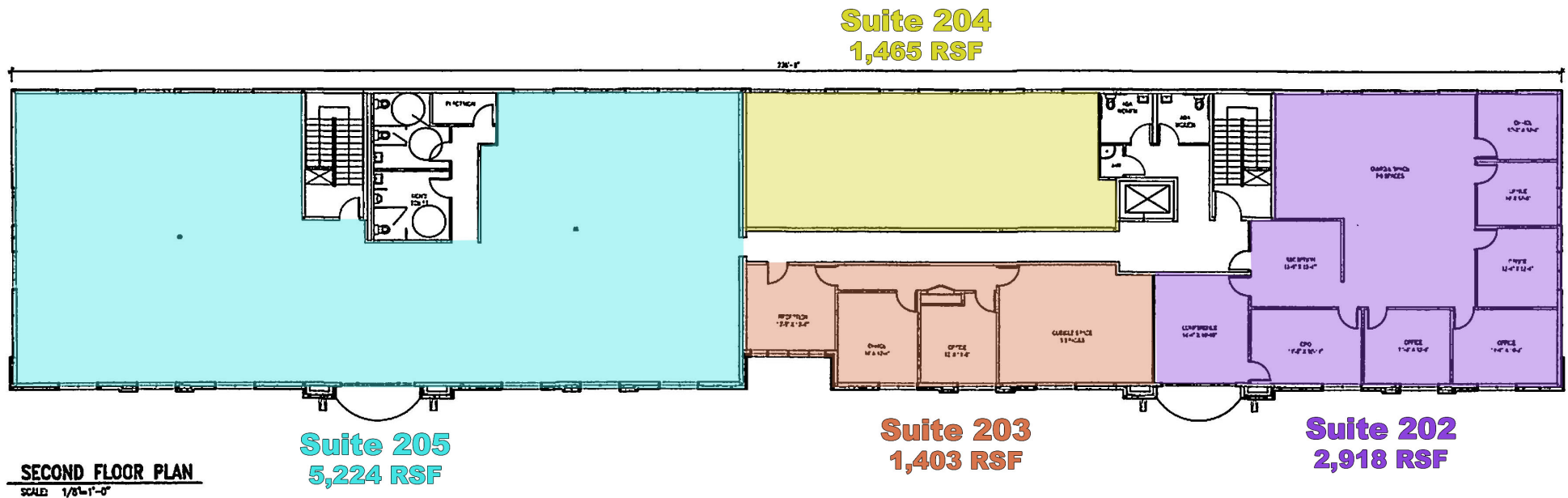


THALHIMER

OYSTER POINT COMMONS / NEWPORT NEWS

SECOND FLOOR CONCEPTUAL FLOOR PLAN

(SUITES ARE NOT DEMISED CURRENTLY)



11719-B Jefferson Ave.

OYSTER POINT COMMONS / NEWPORT NEWS



THALHIMER



Teresa Nettles / Senior VP / teresa.nettles@thalhimer.com / 757 873 9268

One BayPort Way | Suite 100
Newport News, VA 23606
www.thalhimer.com

Independently Owned and Operated / A Member of the Cushman & Wakefield Alliance

Cushman Wakefield | Thalhimer © 2023. No warranty or representation, express or implied, is made to the accuracy or completeness of the information contained herein, and same is submitted subject to errors, omissions, change of price, rental or other conditions, withdrawal without notice, and to any special listing conditions, imposed by the property owner(s). As applicable, we make no representation as to the condition of the property (or properties) in question.