

FOR LEASE – 44,200 SF

PRIME HAMPTON ROADS DISTRIBUTION FACILITY 1965 NORTHGATE COMMERCE PARKWAY

Suffolk, Virginia 23660



AVAILABLE Q1 2024

DEVELOPED BY:

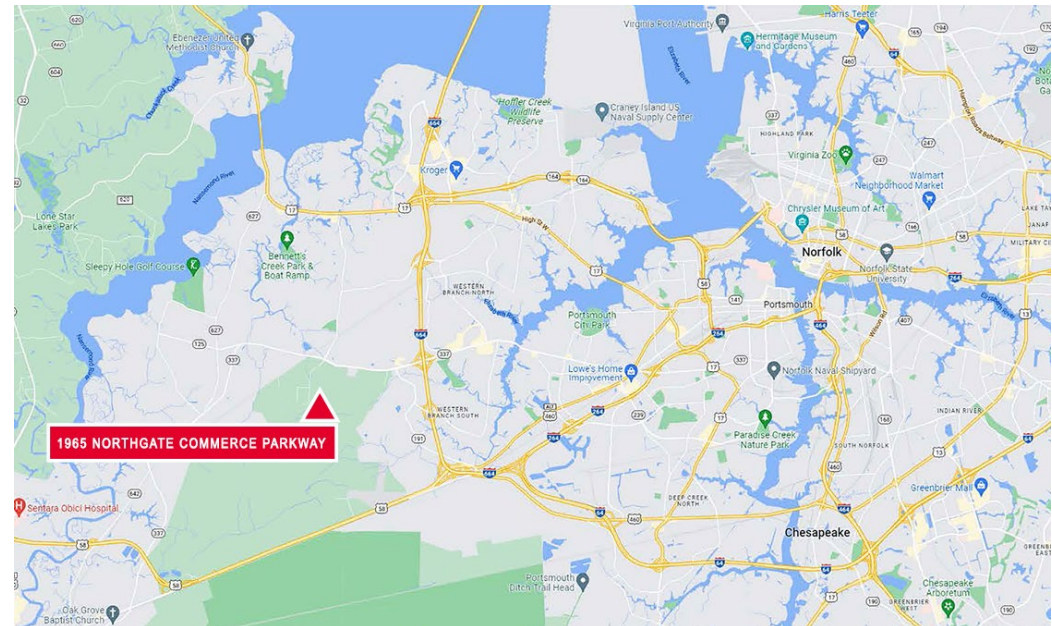
 M.F. DiScala
& Company
Real Estate Investment Bankers

 CUSHMAN &
WAKEFIELD | **THALHIMER**

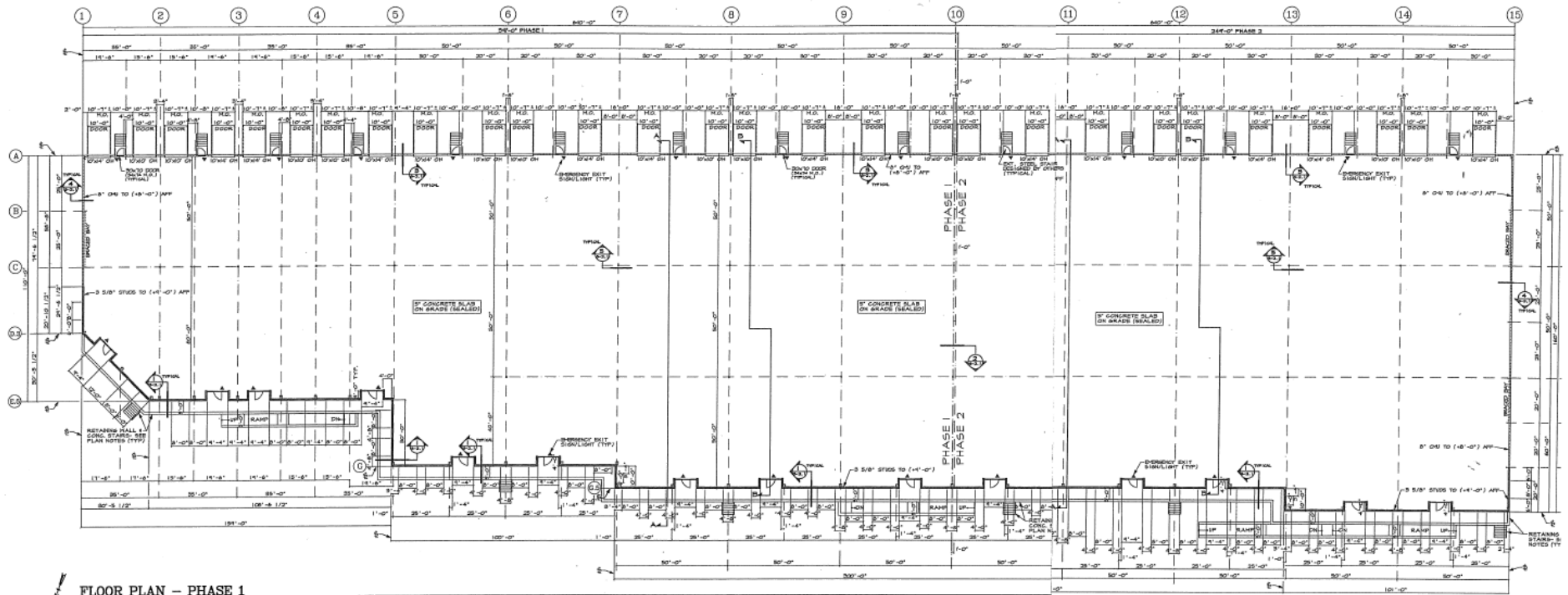
PROPERTY DETAILS



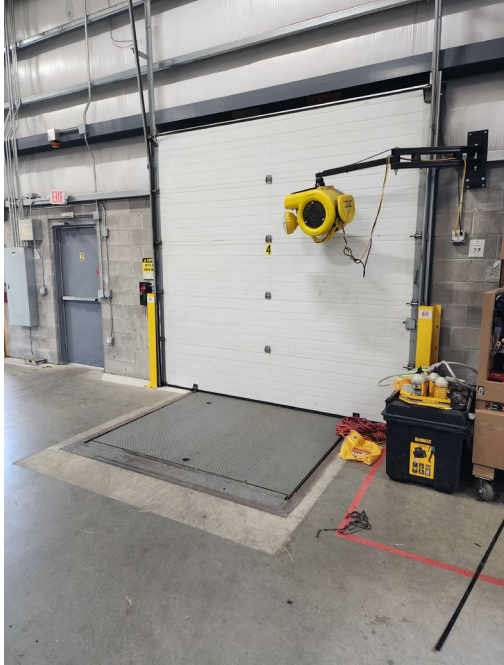
- 44,200 square feet
- 24' clear
- Subdivisible
- 14 - 10' x 10' dock doors with levelers
- Bay depths - 110' x 160'
- 25' x 50' column spacing
- Office space to suit
- 37,500 square fee expansion available
- Ability to convert to yard area
- \$12.00 PSF, NNN
- Available Q1 2024



FLOOR PLAN



PROPERTY PHOTOS



AERIAL



AVAILABLE
Q1 2024
44,200 SF

EXPANSION
OPTION
37,500



SUPERIOR LOCATION

- 10 miles to Virginia International Gateway
- 14 miles to Portsmouth Marine Terminal
- 18 miles to Norfolk International Terminals
- 15 miles to Newport News Marine Terminal
- 90 miles to Richmond

M.F. DISCALA & COMPANY

Established in 1923, M.F. DiScala & Company is a full-service real estate owner and developer with a portfolio of properties across the United States.

In partnership with a large Midwest insurance company, M.F. DiScala & Company has acquired numerous quality properties on the East Coast and continues to expand.

The most recent project in Hesperia, CA consists of a 9 million-square-foot distribution center in development with Covington Capital.

For more information, please visit our webpage at www.DiScala.com

WILLIAM C. THRONE
CSCMP, CCIM, SIOR
Senior Vice President
757 499 2692
bill.throne@thalhimer.com

ROBERT THORNTON
CCIM, CRE, SIOR
Senior Vice President
757 499 0583
bob.thornton@thalhimer.com



**CUSHMAN &
WAKEFIELD**



THALHIMER

Independently Owned and Operated / A Member of the Cushman & Wakefield Alliance

Cushman Wakefield | Thalhimer ©2023. No warranty or representation, express or implied, is made to the accuracy or completeness of the information contained herein, and same is submitted subject to errors, omissions, change of price, rental or other conditions, withdrawal without notice, and to any special listing conditions, imposed by the property owner(s). As applicable, we make no representation as to the condition of the property (or properties) in question.