

# FLEX FOR LEASE

## 10193 Maple Leaf Court

Hanover County, Virginia 23005



**3,175 SF**

AVAILABLE

**DRIVE-IN**

LOADING IN REAR

**\$10 PSF**

INDUSTRIAL GROSS  
PLUS WATER SHARE

**LOW**

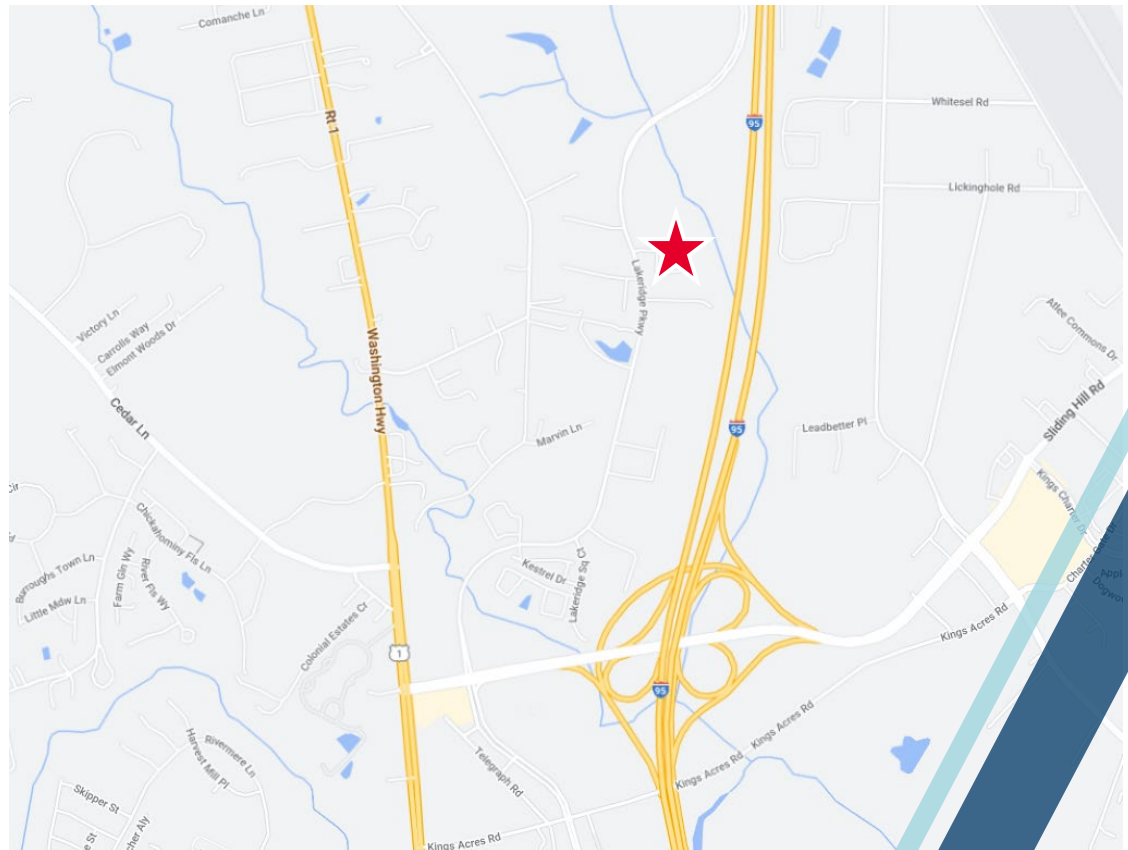
HANOVER TAX RATE

**12/1/23**

TIMING

**CONVENIENT**

TO I-95



**CRAIG DOUGLAS**

Associate

804 344 7153

[craig.douglas@thalhimer.com](mailto:craig.douglas@thalhimer.com)

**CHRISSY CHAPPELL**

Associate

804 344 7197

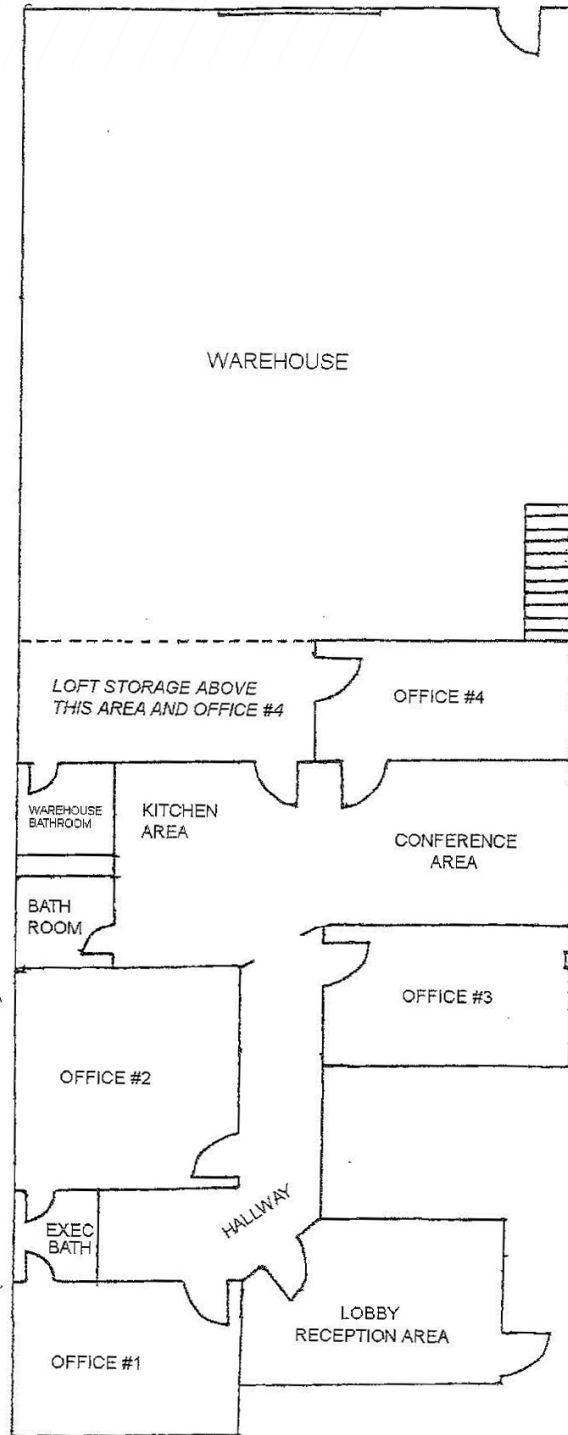
[chrissy.chappell@thalhimer.com](mailto:chrissy.chappell@thalhimer.com)

Thalhimer Center  
11100 W. Broad Street  
Glen Allen, VA 23060  
[www.thalhimer.com](http://www.thalhimer.com)

*Independently Owned and Operated / A Member of the Cushman & Wakefield Alliance*

*Cushman Wakefield | Thalhimer © 2023. No warranty or representation, express or implied, is made to the accuracy or completeness of the information contained herein, and same is submitted subject to errors, omissions, change of price, rental or other conditions, withdrawal without notice, and to any special listing conditions, imposed by the property owner(s). As applicable, we make no representation as to the condition of the property (or properties) in question.*

# FLOOR PLAN



**CRAIG DOUGLAS**  
Associate  
804 344 7153  
craig.douglas@thalhimer.com

**CHRISSY CHAPPELL**  
Associate  
804 344 7197  
chrissy.chappell@thalhimer.com

Thalhimer Center  
11100 W. Broad Street  
Glen Allen, VA 23060  
[www.thalhimer.com](http://www.thalhimer.com)

*Independently Owned and Operated / A Member of the Cushman & Wakefield Alliance*

*Cushman Wakefield | Thalhimer © 2023. No warranty or representation, express or implied, is made to the accuracy or completeness of the information contained herein, and same is submitted subject to errors, omissions, change of price, rental or other conditions, withdrawal without notice, and to any special listing conditions, imposed by the property owner(s). As applicable, we make no representation as to the condition of the property (or properties) in question.*