

210 PROFESSIONAL PARK DRIVE
BLACKSBURG, VA 24060

OFFICE SUITES FOR LEASE

PRICE GUTSHALL

Vice President

price.gutshall@thalhimer.com

540.767.3011



THALHIMER

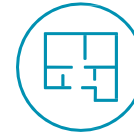


SF

Suite 14 - 1,344 SF

Suite 15 - 576 SF

Suites can be combined for larger suite



FEATURES

Reception area, break area, and private offices and/or open office space



BUILDING SPECIFICATIONS

Great mix of businesses in park

\$15.00 per square foot per year



PARKING

Onsite parking surrounding the building



SIGNAGE

Building signage available



LOCATION

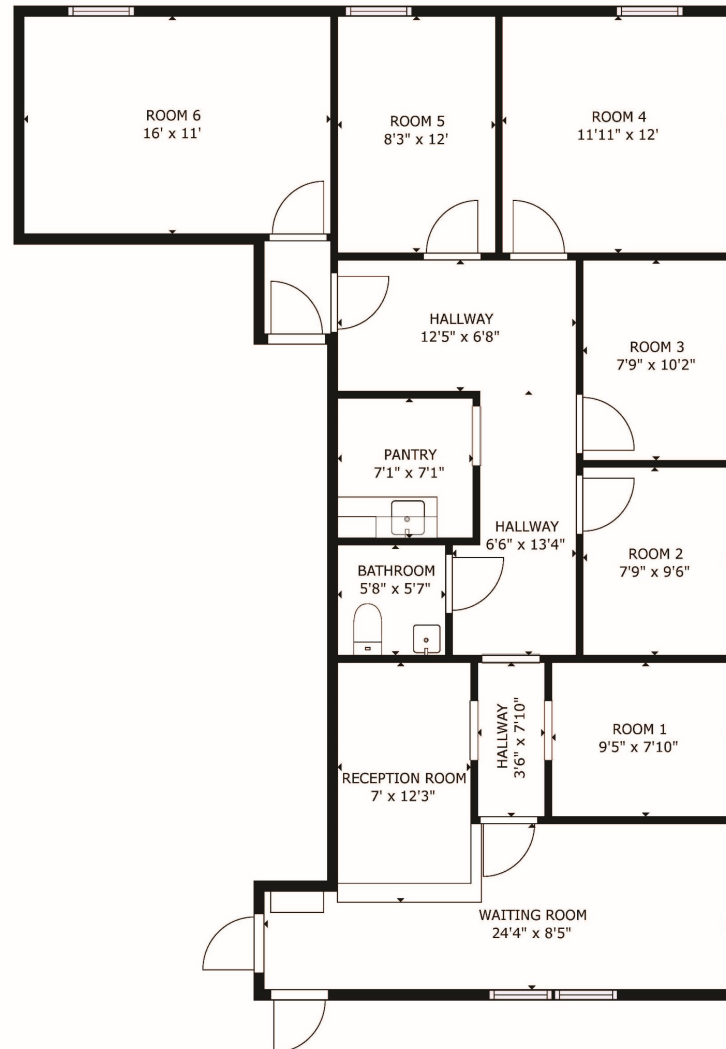
Ideal location in professional business park setting off South Main and 460 in Blacksburg, VA

OFFICE

AVAILABLE FOR LEASE

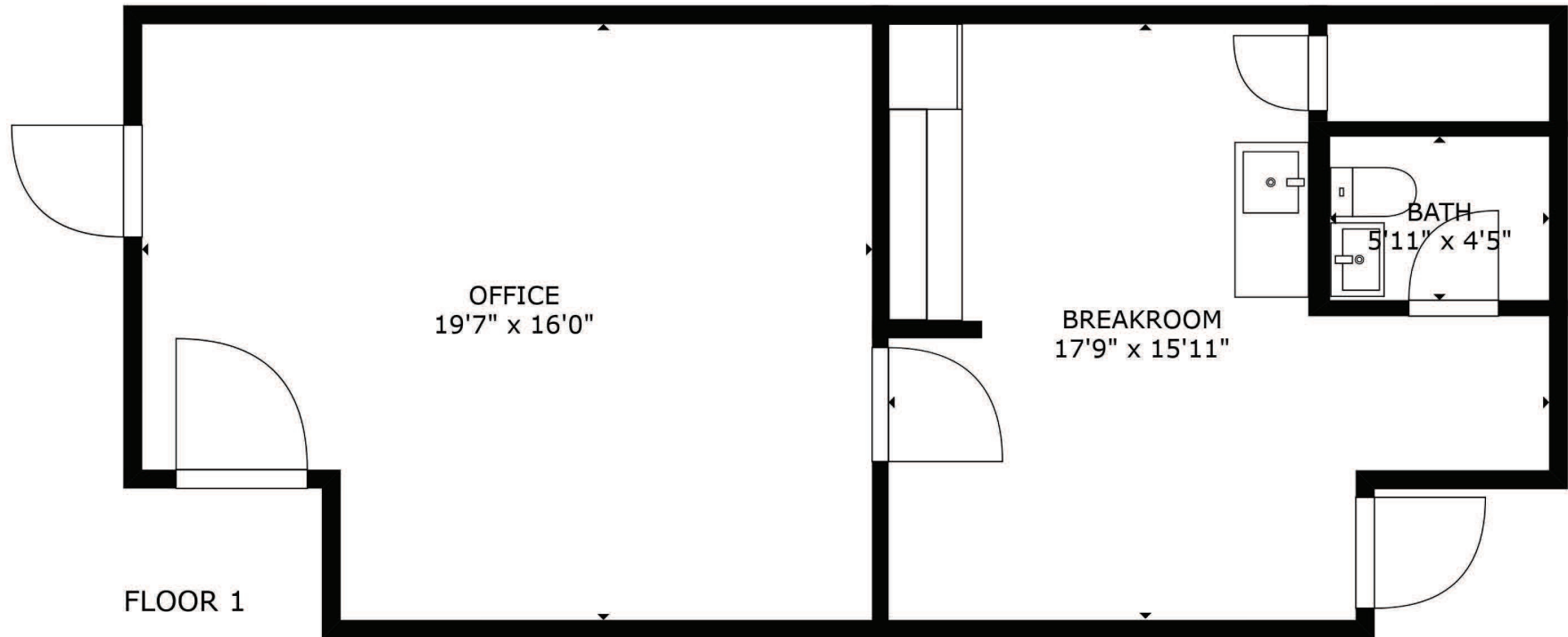


Suite 14 – 1,344 SF



FLOOR PLANS

Suite 15 – 576 SF



INTERIOR/EXTERIOR PHOTOS





LOCATION MAP

**210 Professional Park Drive
Blacksburg, VA 24060**

LEASING INFORMATION

PLEASE CONTACT

PRICE GUTSHALL
Vice President
price.gutshall@thalhimer.com
540.767.3011

Thalhimer
310 First Street, Suite 300
Roanoke, VA 24011
thalhimer.com

Independently Owned and Operated / A Member of the Cushman & Wakefield Alliance

Cushman & Wakefield | Thalhimer © 2023. No warranty or representation, express or implied, is made to the accuracy or completeness of the information contained herein, and same is submitted subject to errors, omissions, change of price, rental or other conditions, withdrawal without notice, and to any special listing conditions imposed by the property owner(s). As applicable, we make no representation as to the condition of the property (or properties) in question.