

**FOR LEASE**  
**924 Professional Place**  
Chesapeake, VA 23320



**THALHIMER**

**2,360 SF**  
AVAILABLE

**TOM DANA**  
Vice President  
757 499 2894  
[tom.dana@thalhimer.com](mailto:tom.dana@thalhimer.com)

# PROPERTY HIGHLIGHTS



**SECOND FLOOR  
OFFICE SPACE**

±2,360 SF



**CONVENIENT  
LOCATION**

GREENBRIER PARKWAY  
NEAR VOLVO



**ATTRACTIVE  
MODERN STYLING**



**GREENBRIER  
OFFICE PARK**



**\$3,100.00 / MONTH**

TENANT PAYS  
ELECTRIC & JANITORIAL

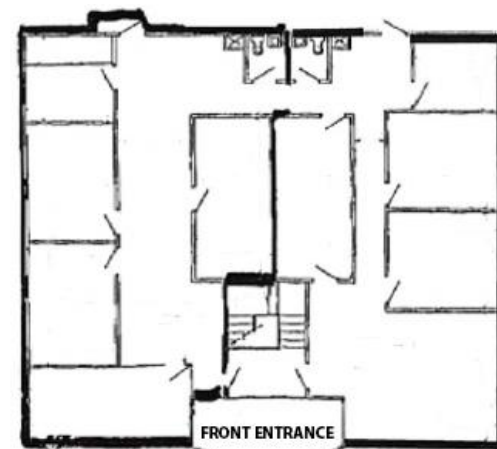


**OPTION TO LEASE  
HALF**

# PROPERTY AERIAL MAP



Greenbrier Commerce Park



\*APPROXIMATE FLOOR PLAN



**TOM DANA**  
Vice President  
757 499 2894  
[tom.dana@thalhimer.com](mailto:tom.dana@thalhimer.com)

*Independently Owned and Operated / A Member of the Cushman & Wakefield Alliance*

*Cushman Wakefield | Thalhimer ©2023. No warranty or representation, express or implied, is made to the accuracy or completeness of the information contained herein, and same is submitted subject to errors, omissions, change of price, rental or other conditions, withdrawal without notice, and to any special listing conditions, imposed by the property owner(s). As applicable, we make no representation as to the condition of the property (or properties) in question.*