

SUBLEASE

CUSHMAN & WAKEFIELD | THALHIMER



2235 STAPLES MILL ROAD
RICHMOND, VIRGINIA 23230

ONE HOLLAND PLACE

ELEVATOR LOBBY



9,862 RSF | 2nd Floor | Sublease

Highlights

- Entrance off elevator lobby
- Walkable to Libbie Mill amenities
- Excellent Interstate access
- Rate negotiable
- Lease Expiration - 8/31/2029



LIBBIE AVENUE CORRIDOR

The Libbie Avenue corridor is a vibrant and popular area located in Richmond's near West End, known for its charming atmosphere, unique shops, restaurants and historic homes. Shopping is available from unique boutiques and specialty stores from a wide range of locally-owned shops, offering clothing, gifts, jewelry, home décor and gifts. Numerous restaurants, cafes and bistros cater to a wide variety of tastes and range from casual eateries to upscale dining establishments. Richmond's near West End is a thriving mix of redeveloped retail and multifamily complexes, easily accessible by the well-established neighborhoods that surround it.



1ST FLOOR
SHARED
TENANT
LOUNGE
WITH COFFEE
& SNACKS



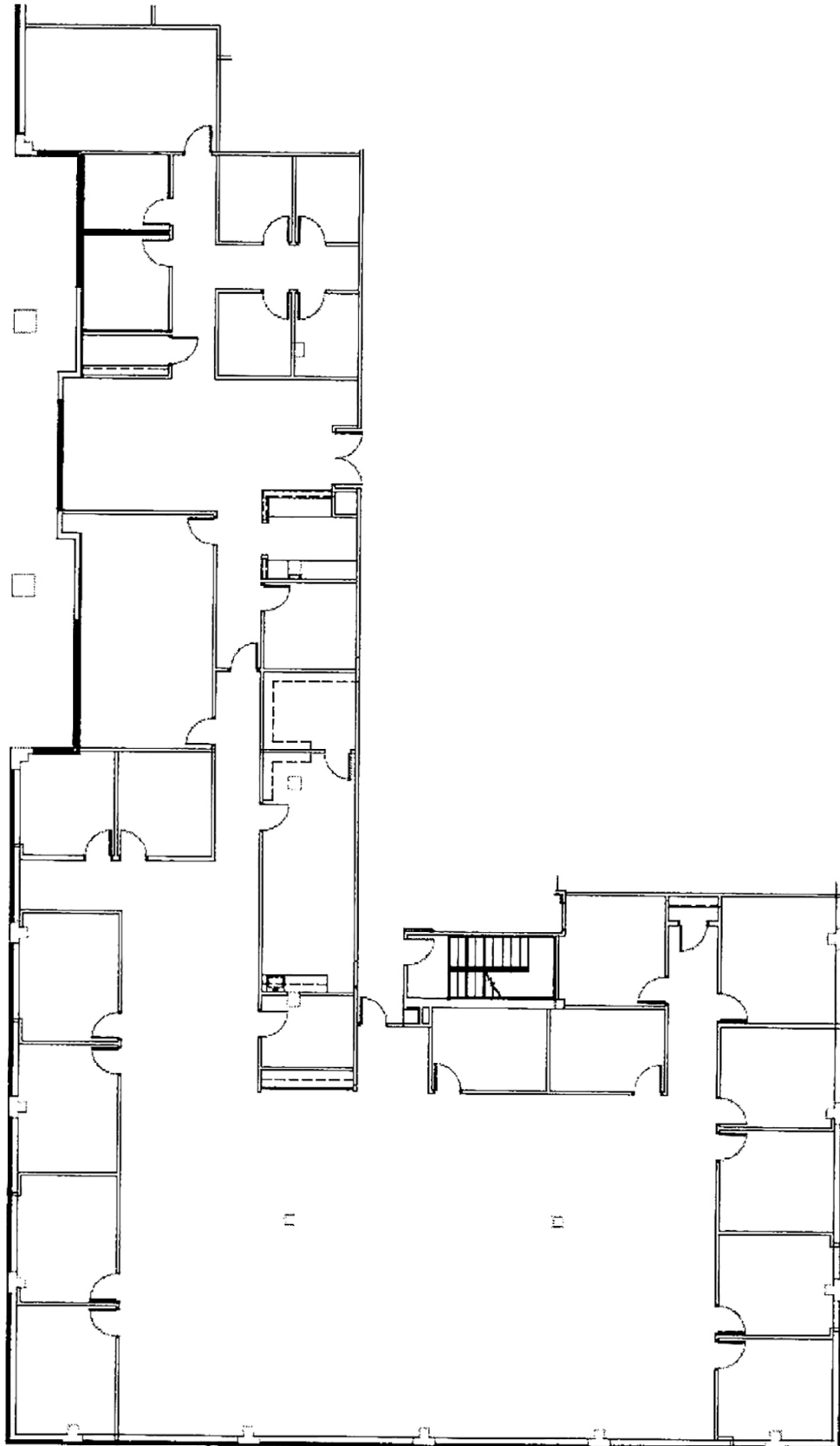
4.46/1000
PARKING



WALKABLE
TO
ABUNDANT
RETAIL
AMENITIES

9,862 RSF

2nd Floor





ONE HOLLAND PLACE

LIBBIE PLACE SHOPPING CENTER

TARGET
PET SMART

WILLOW LAWN

CONTACT INFORMATION



BRIAN BERKEY
 Senior Vice President
 804.836.4408
 brian.berkey@thalhimer.com

RETT TURNER, CCIM, SIOR
 First Vice President
 804.697.3438
 rett.turner@thalhimer.com

KARLA KNIGHT
 First Vice President
 804.514.2031
 karla.knight@thalhimer.com

Thalhimer Center
 11100 W. Broad Street
 Glen Allen, VA 23060
 www.thalhimer.com

Independently Owned and Operated / A Member of the Cushman & Wakefield Alliance
 Cushman & Wakefield | Thalhimer © 2024. No warranty or representation, express or implied, is made to the accuracy or completeness of the information contained herein, and same is submitted subject to errors, omissions, change of price, rental or other conditions, withdrawal without notice, and to any special listing conditions imposed by the property owner(s). As applicable, we make no representation as to the condition of the property (or properties) in question.