

CLASS A SUBLEASE



## RIVERFRONT PLAZA WEST

901 E. BYRD STREET  
RICHMOND, VIRGINIA 23219



CUSHMAN &  
WAKEFIELD

THALHIMER



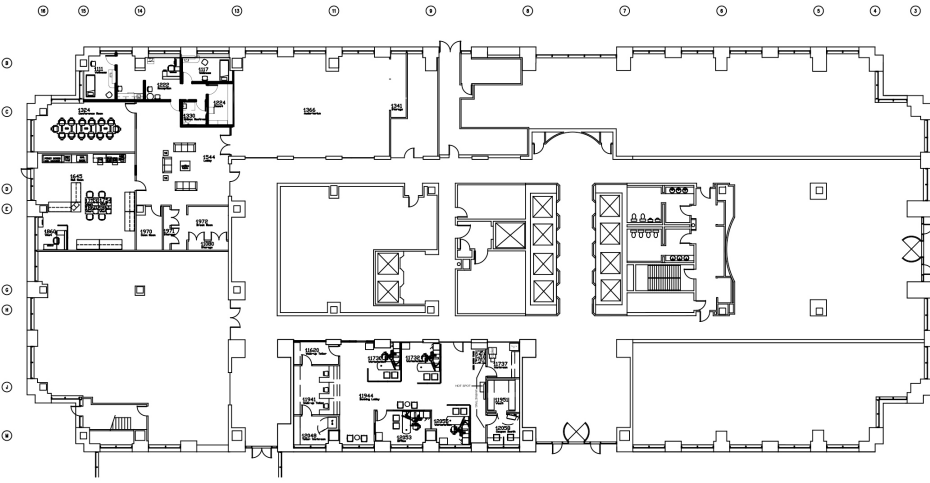
# PROPERTY HIGHLIGHTS

Address	901 East Byrd Street
Submarket	CBD
Building Class	A
Year Built	1990
Total Building SF	475,945 SF
Available SF	141,167 SF
Parcel ID	E000-0037-003
Expiration	8/31/2025
Land Area	3.79 acres
Stories	22
Parking	2.30 per 1,000 SF
Typical Floor Size	22,970 RSF
Zoning	B-4
Access	Ingress/Egress on East Byrd Street

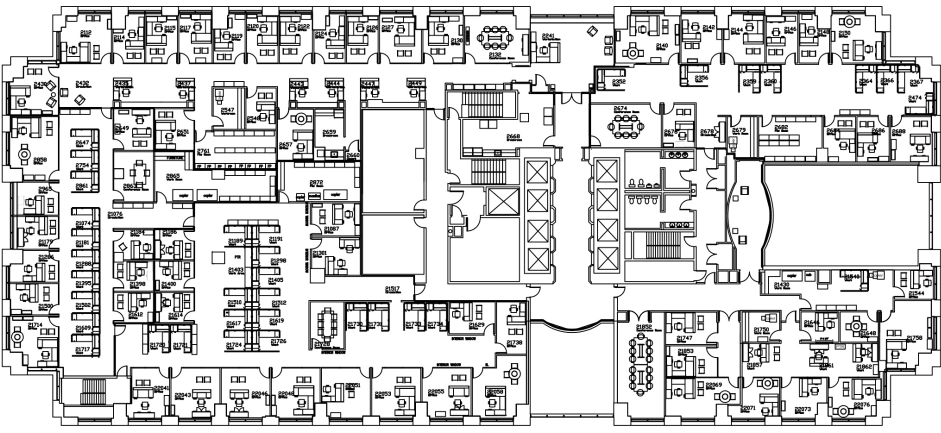


# FLOORPLANS

FIRST FLOOR - 9,862 RSF

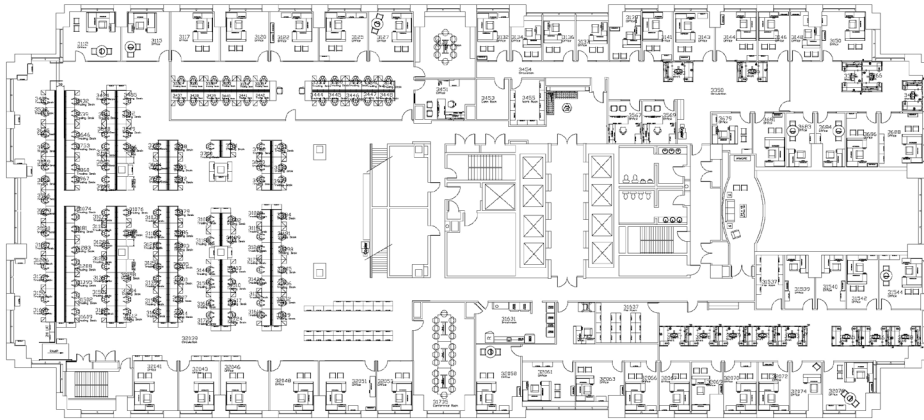


SECOND FLOOR - 30,435 RSF

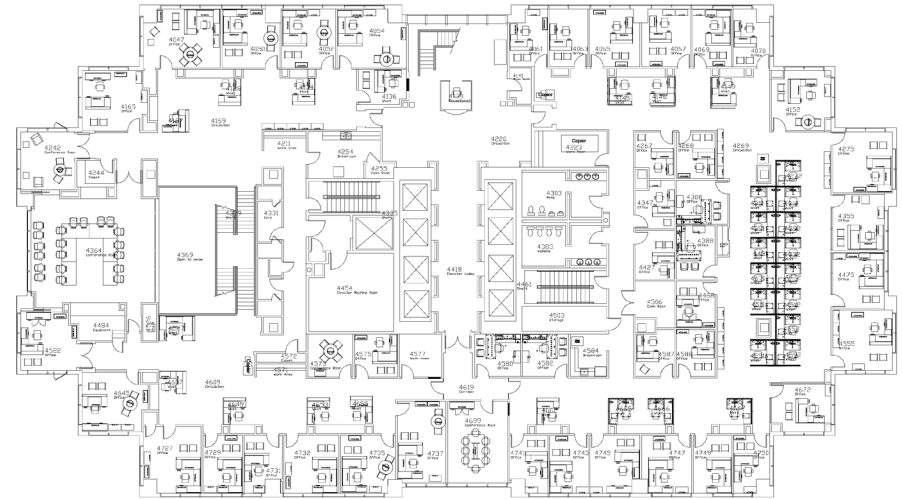


# FLOORPLANS

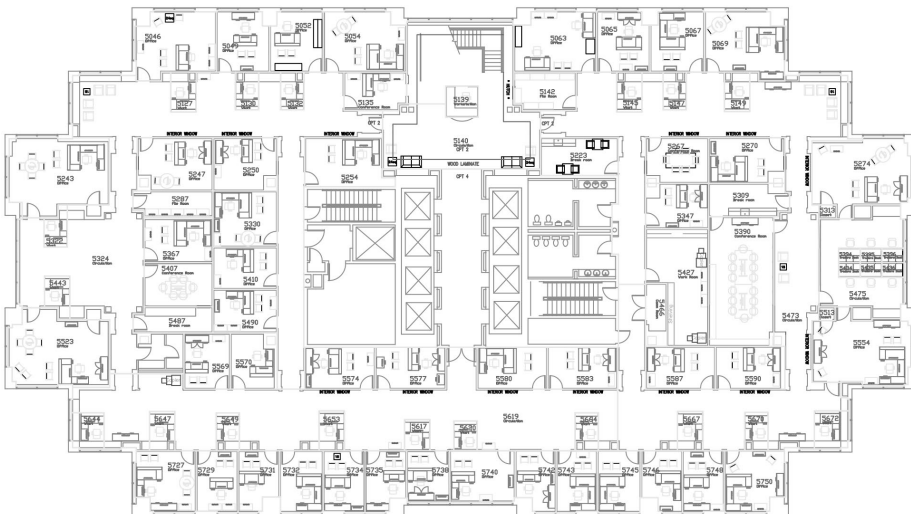
THIRD FLOOR - 31,176 RSF



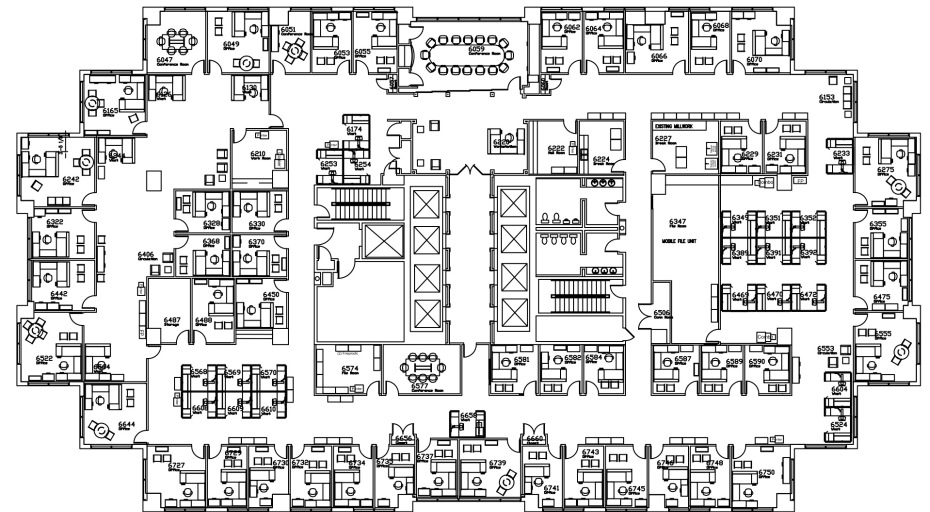
FOURTH FLOOR - 22,969 RSF



FIFTH FLOOR - 22,969 RSF



SIXTH FLOOR - 22,969 RSF





# LOCATION OVERVIEW







# RIVERFRONT PLAZA WEST

## CLASS A SUBLEASE

## CONTACT INFORMATION

**PAUL F. SILVER**  
Chairman Emeritus  
804 697 3407  
[paul.silver@thalhimer.com](mailto:paul.silver@thalhimer.com)

**BRIAN BERKEY**  
Senior Vice President  
804 836 4408  
[brian.berkey@thalhimer.com](mailto:brian.berkey@thalhimer.com)

**KARLA KNIGHT**  
First Vice President  
804 514 2031  
[karla.knight@thalhimer.com](mailto:karla.knight@thalhimer.com)

*Independently Owned and Operated / A Member of the Cushman & Wakefield Alliance*

Cushman & Wakefield | Thalhimer © 2024. No warranty or representation, express or implied, is made to the accuracy or completeness of the information contained herein, and same is submitted subject to errors, omissions, change of price, rental or other conditions, withdrawal without notice, and to any special listing conditions imposed by the property owner(s). As applicable, we make no representation as to the condition of the property (or properties) in question.



Thalhimer Center | 11100 W. Broad Street  
Glen Allen, VA 23060 | [www.thalhimer.com](http://www.thalhimer.com)