



International Distribution Center

11861 Canon Boulevard
Newport News, VA 23606

PROPERTY HIGHLIGHTS

Unit B: 2,017 SF

Unit R: 2,071 SF

\$8.50/SF Base Rent + \$4.44/SF CAM

Office/flex suite available

Dock level loading

Prominent location at the corner of Canon Blvd. and
City Center Blvd. in Oyster Point Park

Within close proximity to I-64

Façade signage available



TERESA NETTLES

Senior Vice President

+1 757 873 9268

teresa.nettles@thalhimer.com

One BayPort Way, Suite 100

Newport News, Virginia

Main +1 757 873 2900

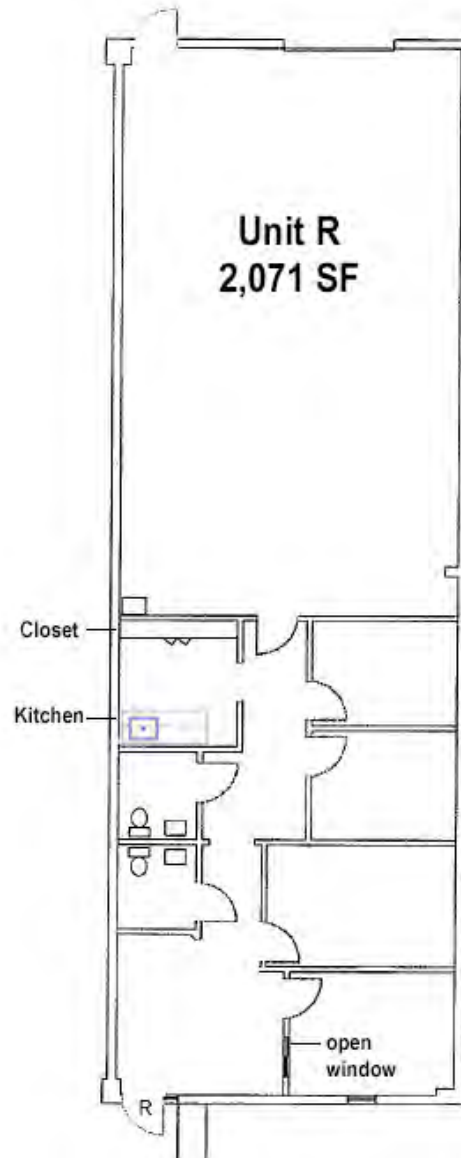
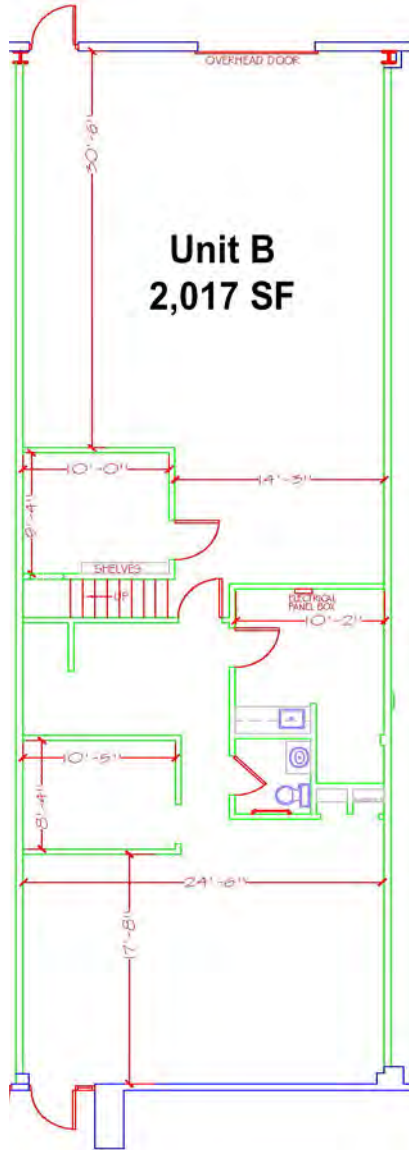
thalhimer.com

Independently Owned and Operated / A Member of the Cushman & Wakefield Alliance

Cushman Wakefield | Thalhimer © 2023. No warranty or representation, express or implied, is made to the accuracy or completeness of the information contained herein, and same is submitted subject to errors, omissions, change of price, rental or other conditions, withdrawal without notice, and to any special listing conditions, imposed by the property owner(s). As applicable, we make no representation as to the condition of the property (or properties) in question.

International Distribution Center

11861 Canon Boulevard | Newport News, VA 23606



TERESA NETTLES

Senior Vice President

+1 757 873 9268

teresa,nettles@thalhimer.com

One BayPort Way, Suite 100
Newport News, Virginia
Main +1 757 873 2900
thalhimer.com