



THALHIMER

# TOWER PARK

735 Thimble Shoals Blvd.  
Newport News, VA 23606

## PROPERTY HIGHLIGHTS

Unit 7, Suite 170 – 3,600 SF - \$15.50/SF

Located on a prominent corner in Oyster Point Park  
near City Center

Easy access to I-64

Nicely appointed office offers a mix of open area  
and private offices

Abundant surface parking

Tenant pays own utilities and janitorial and pro-rata  
share of taxes and insurance



### TERESA NETTLES

Senior Vice President  
+1 757 873 9268  
teresa.nettles@thalhimer.com

One BayPort Way, Suite 100  
Newport News, Virginia  
Main +1 757 873 2900  
thalhimer.com

*Independently Owned and Operated / A Member of the Cushman & Wakefield Alliance*

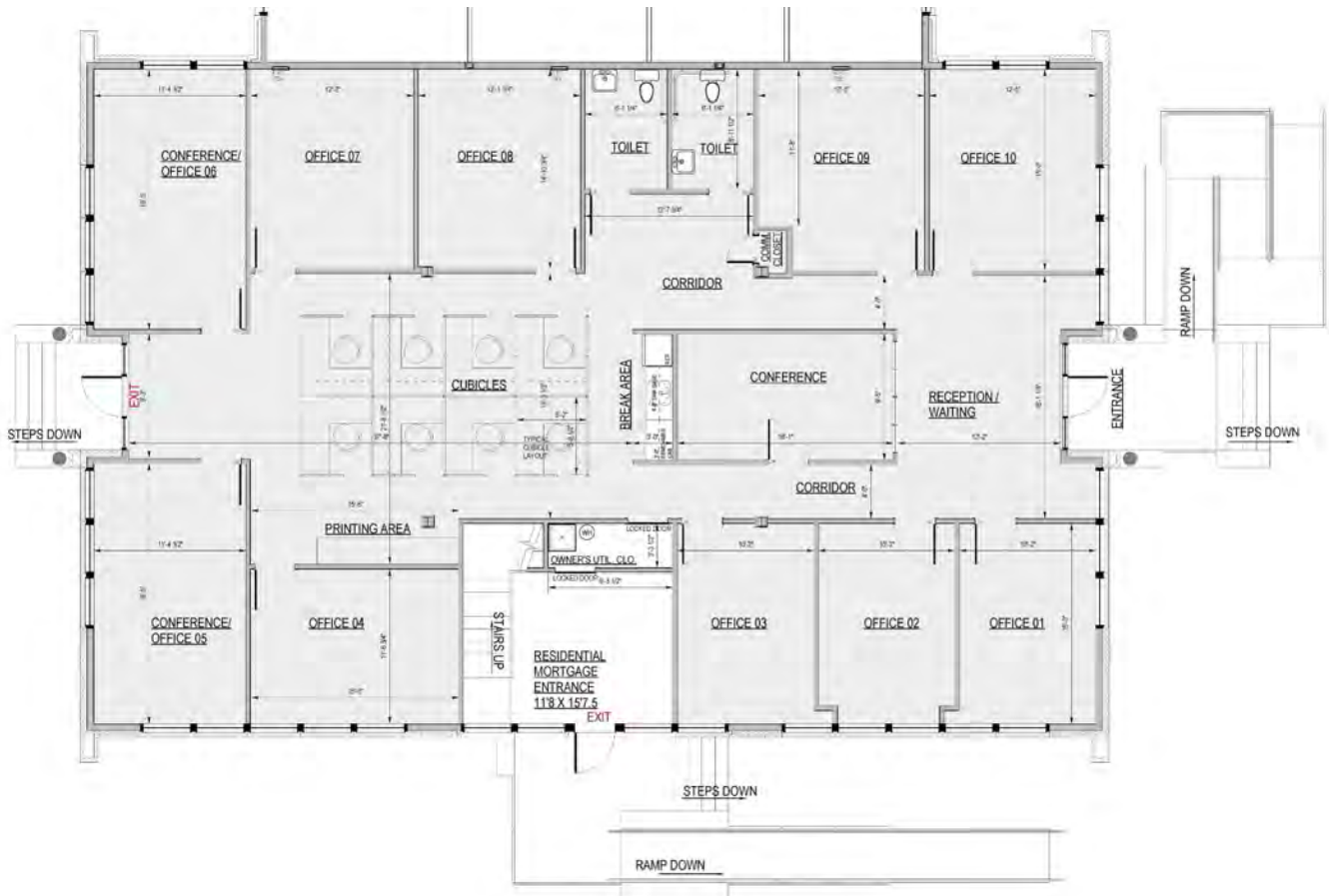
*Cushman Wakefield | Thalhimer © 2023. No warranty or representation, express or implied, is made to the accuracy or completeness of the information contained herein, and same is submitted subject to errors, omissions, change of price, rental or other conditions, withdrawal without notice, and to any special listing conditions, imposed by the property owner(s). As applicable, we make no representation as to the condition of the property (or properties) in question.*

# TOWER PARK

735 Thimble Shoals Blvd. | Newport News, VA 23606



## FLOOR PLAN



**TERESA NETTLES**  
Senior Vice President  
+1 757 873 9268  
teresa,nettles@thalhimer.com

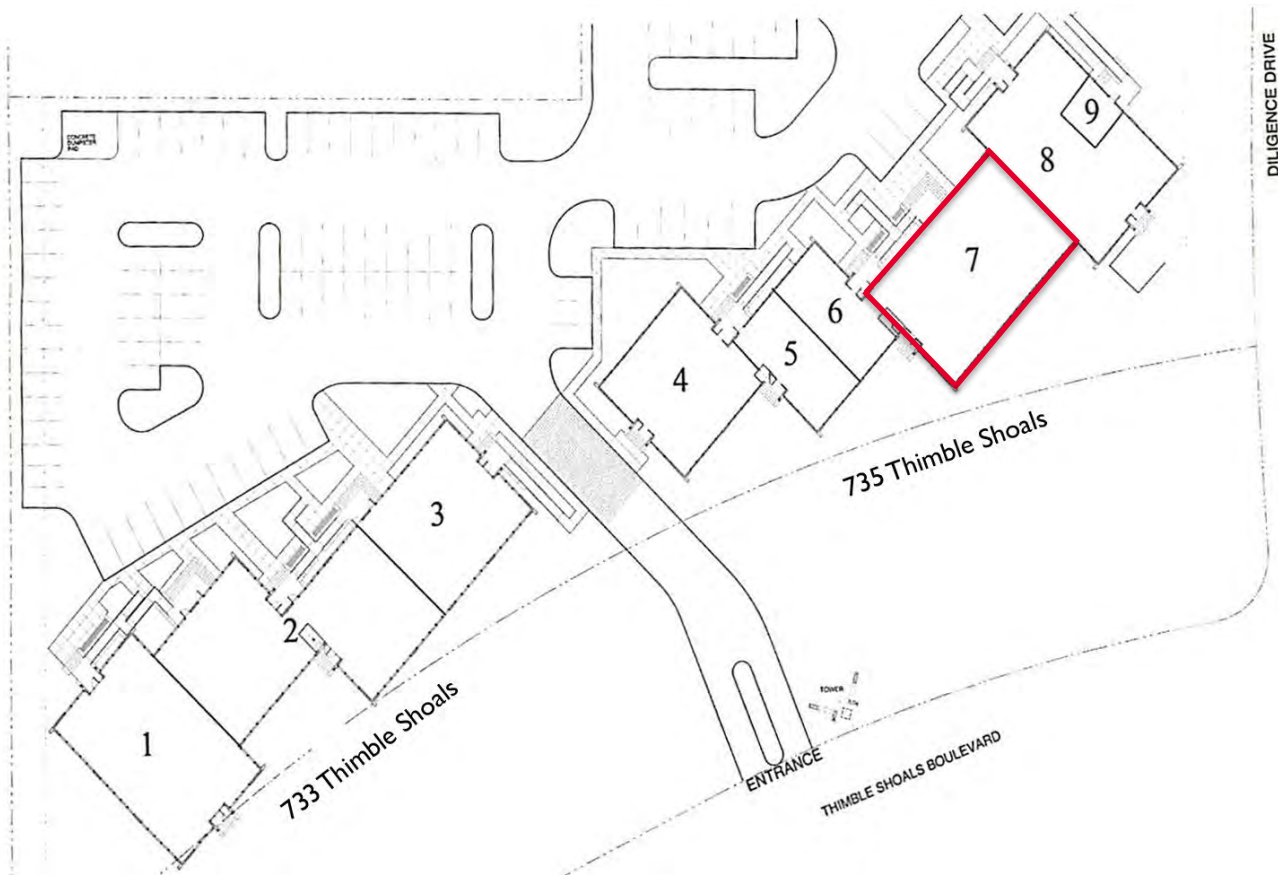
One BayPort Way, Suite 100  
Newport News, Virginia  
Main +1 757 873 2900  
thalhimer.com

# TOWER PARK

735 Thimble Shoals Blvd. | Newport News, VA 23606



## OFFICE PARK SITE PLAN



**TERESA NETTLES**  
Senior Vice President  
+1 757 873 9268  
teresa,nettles@thalhimer.com

One BayPort Way, Suite 100  
Newport News, Virginia  
Main +1 757 873 2900  
thalhimer.com

Independently Owned and Operated / A Member of the Cushman & Wakefield Alliance

Cushman Wakefield | Thalhimer © 2023. No warranty or representation, express or implied, is made to the accuracy or completeness of the information contained herein, and same is submitted subject to errors, omissions, change of price, rental or other conditions, withdrawal without notice, and to any special listing conditions, imposed by the property owner(s). As applicable, we make no representation as to the condition of the property (or properties) in question.