

# 904 PRINCESS ANNE STREET

Fredericksburg, VA 22401

**AVAILABLE FOR LEASE**



**OFFICE SUITES IN  
HISTORIC DOWNTOWN**

**JOBY SALICETI**

Senior Associate

540 322 4142

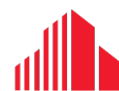
[joby.saliceti@thalhimer.com](mailto:joby.saliceti@thalhimer.com)

**SHARON SCHMIDT**

Senior Associate

540 322 4155

[sharon.schmidt@thalhimer.com](mailto:sharon.schmidt@thalhimer.com)



**CUSHMAN &  
WAKEFIELD**

**THALHIMER**

# FEATURES



## Property Features

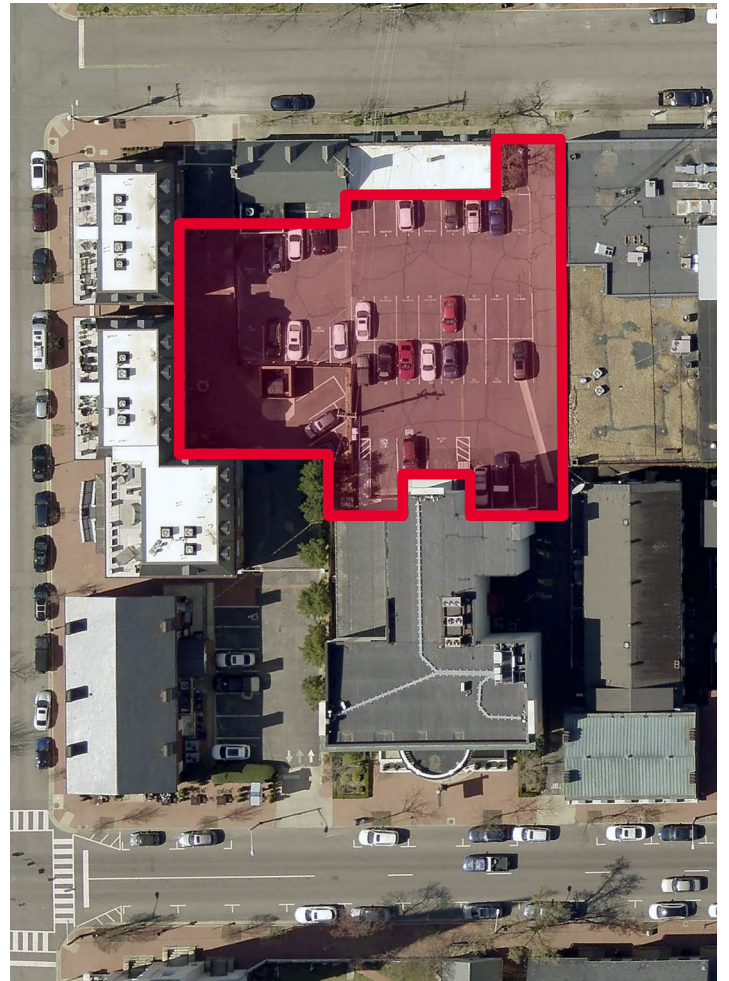
Building Size:	28,650
Available SF:	Suite 301 – 524 SF
Lease Rate:	\$1,425 / Month
Parking:	0.70 / 1,000 SF
Timing:	Available Immediately

---

***Located in the heart of Historic  
Downtown Fredericksburg***

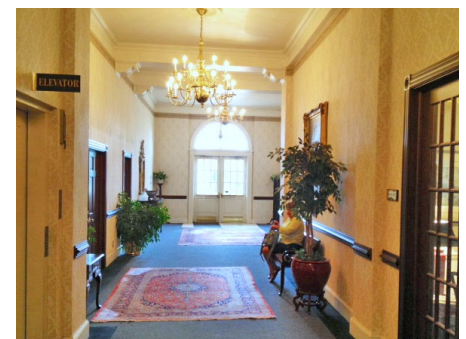
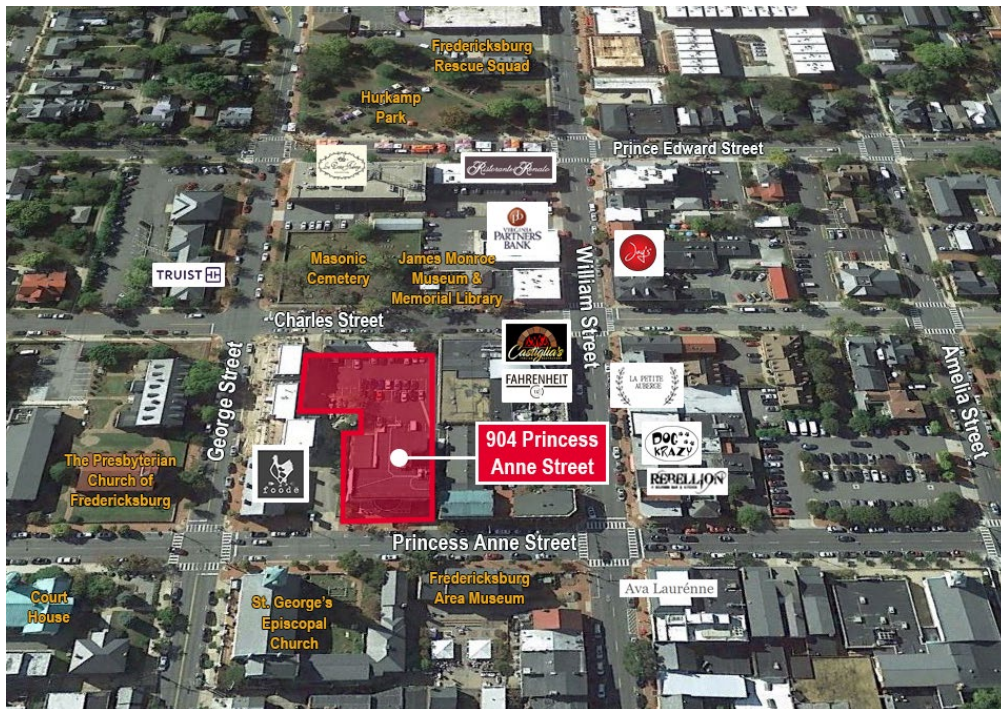
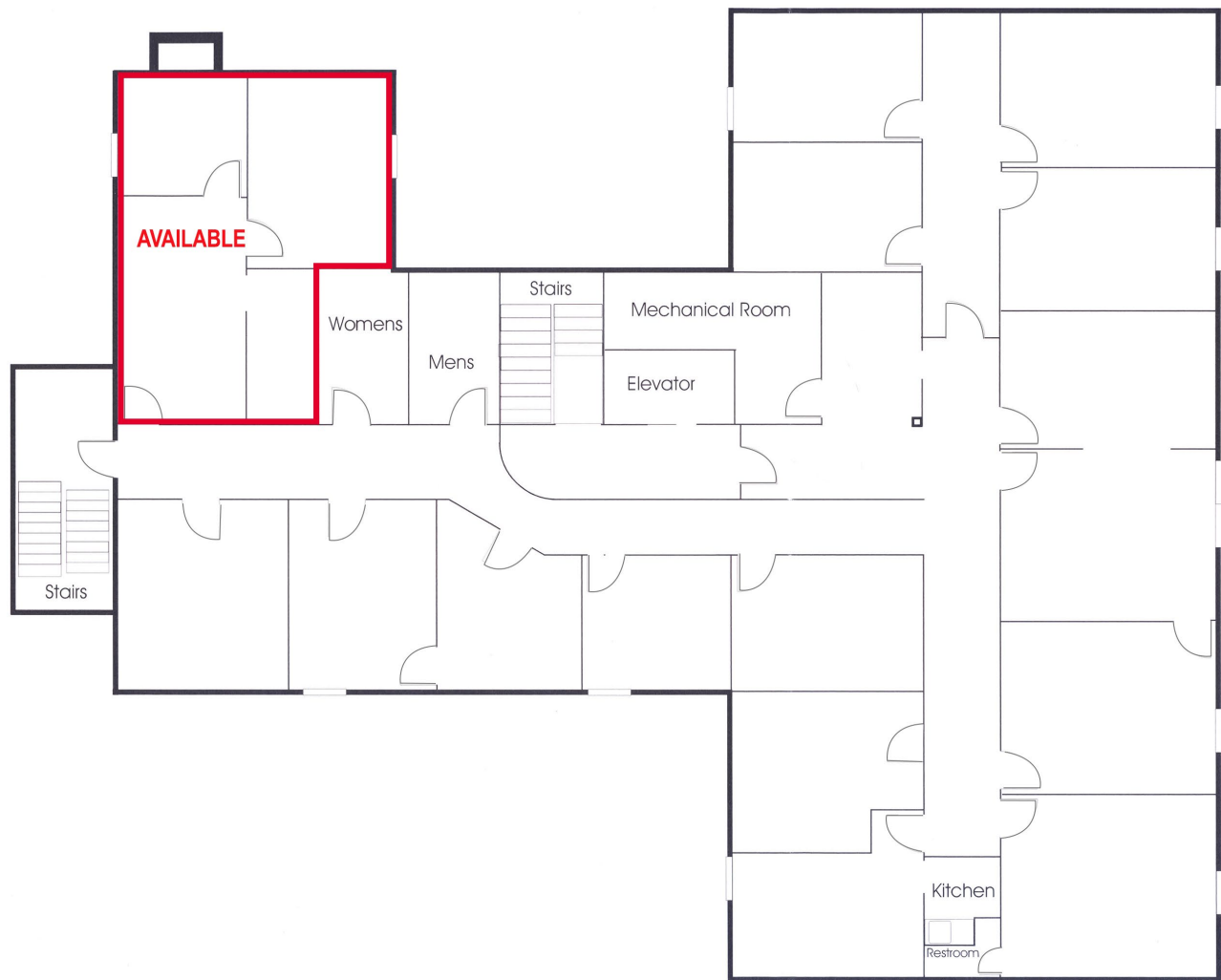
---

- Office suites available only two blocks from the courthouse
- Utilities included in the rent
- Shared kitchen and elevator available for use
- Off street parking on-site



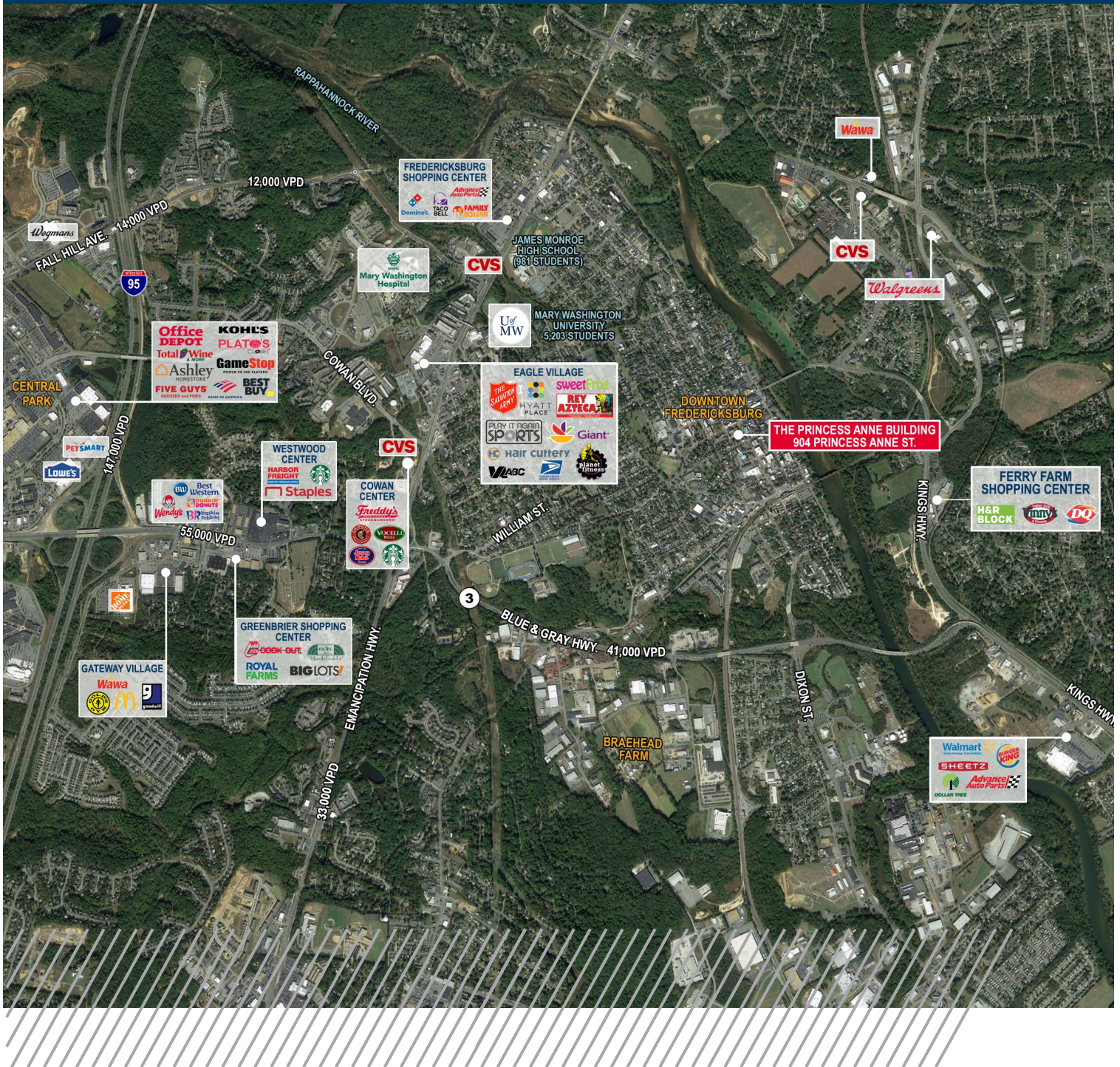


# FLOOR PLAN





# AERIAL



**JOBY SALICETI**

Senior Associate

540 322 4142

joby.saliceti@thalhimer.com

**SHARON SCHMIDT**

Senior Associate

540 322 4155

sharon.schmidt@thalhimer.com

1125 Emancipation Hwy.

Suite 350

Fredericksburg, VA 22401

www.thalhimer.com



Independently Owned and Operated / A Member of the Cushman & Wakefield Alliance

Cushman Wakefield | Thalhimer ©2024. No warranty or representation, express or implied, is made to the accuracy or completeness of the information contained herein, and same is submitted subject to errors, omissions, change of price, rental or other conditions, withdrawal without notice, and to any special listing conditions, imposed by the property owner(s). As applicable, we make no representation as to the condition of the property (or properties) in question.