



**FOR LEASE**

**3000 - 6000 Incubator Road  
Hampton, Virginia**

# Incubator Business Suites

## Copeland Industrial Park

**900 – 1,800 SF**

**Contact**

ELLIS COLTHORPE  
Senior Associate  
+1 757 213 4160  
[ellis.colthorpe@thalhimer.com](mailto:ellis.colthorpe@thalhimer.com)



FOR LEASE

# Incubator Business Suites



## Property Highlights

M-3, Heavy Industrial Zoning

	3000   Suite 101-102	6000   Suite 106
<b>Square Footage</b>	1,800 SF	900 SF
<b>Warehouse Space</b>	1,400 SF	700 SF
<b>Office Space</b>	400 SF	200 SF
<b>Drive-In Loading</b>	2 (12' x 14') – Drive Thru	1 (12' x 14')
<b>Power</b>	Single Phase 110v	Single Phase 110v
<b>Clear Height</b>	15' - 17'	15' - 17'

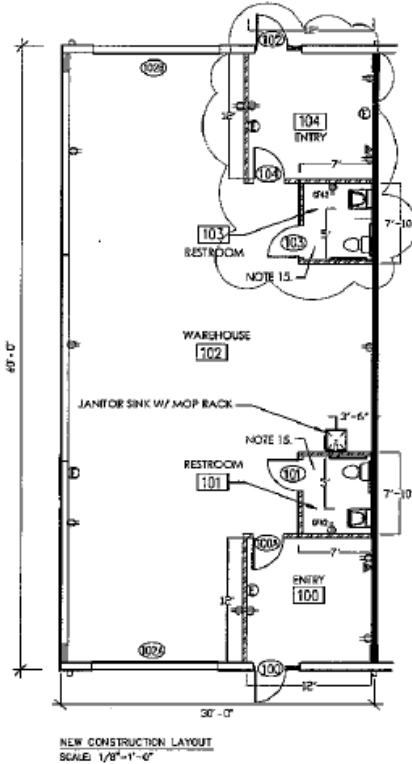


FOR LEASE

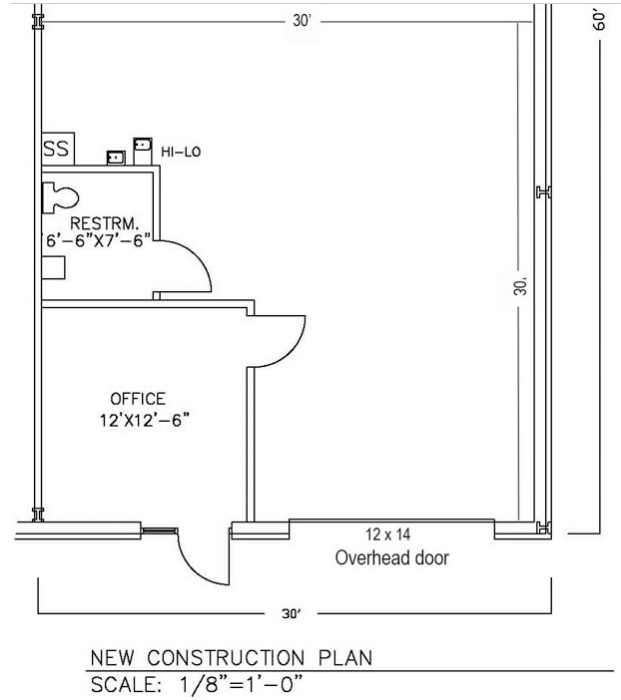
# Incubator Business Suites



3000 | 101-102



6000 | 106



## Space Available

3000   101-102	1,800 SF	\$1,950 / Month	April 1 <sup>st</sup>
6000   106	900 SF	\$975 / month	June 1 <sup>st</sup>

Rate Includes: CAM, Trash Disposal, Water & Sewer

Tenant Responsible For: Electricity, Internet, Telephone & Cable

## Contact

ELLIS COLTHORPE, Senior Associate | +1 757 213 4160 | [ellis.colthorpe@thalhimer.com](mailto:ellis.colthorpe@thalhimer.com)

One BayPort Way, Suite 100 Newport New, Virginia 23606 | [thalhimer.com](http://thalhimer.com)

*Independently Owned and Operated / A Member of the Cushman & Wakefield Alliance  
Cushman Wakefield | Thalhimer ©2024. No warranty or representation, express or implied, is made to the accuracy or completeness of the information contained herein, and same is submitted subject to errors, omissions, change of price, rental or other conditions, withdrawal without notice, and to any special listing conditions, imposed by the property owner(s). As applicable, we make no representation as to the condition of the property (or properties) in question.*