

550 WOODLAKE CIRCLE UNIT C

Chesapeake, Virginia 23320

AVAILABLE FOR SUBLEASE



THALHIMER

BRETT SAIN

First Vice President
757 213 4153
brett.sain@thalhimer.com

GEOFF POSTON, SIOR

Senior Vice President
757 650 8437
geoff.poston@thalhimer.com

The Town Center of Virginia Beach
222 Central Park Avenue, Suite 1500
Virginia Beach, VA 23462
757 499 2900 | Thalhimer.com

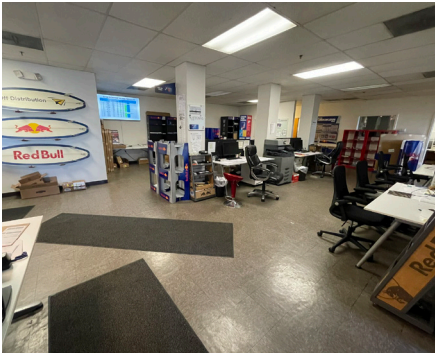
± 20,000 SF
Dock / Grade Warehouse in
Greenbrier Industrial Park

SUITE DETAILS

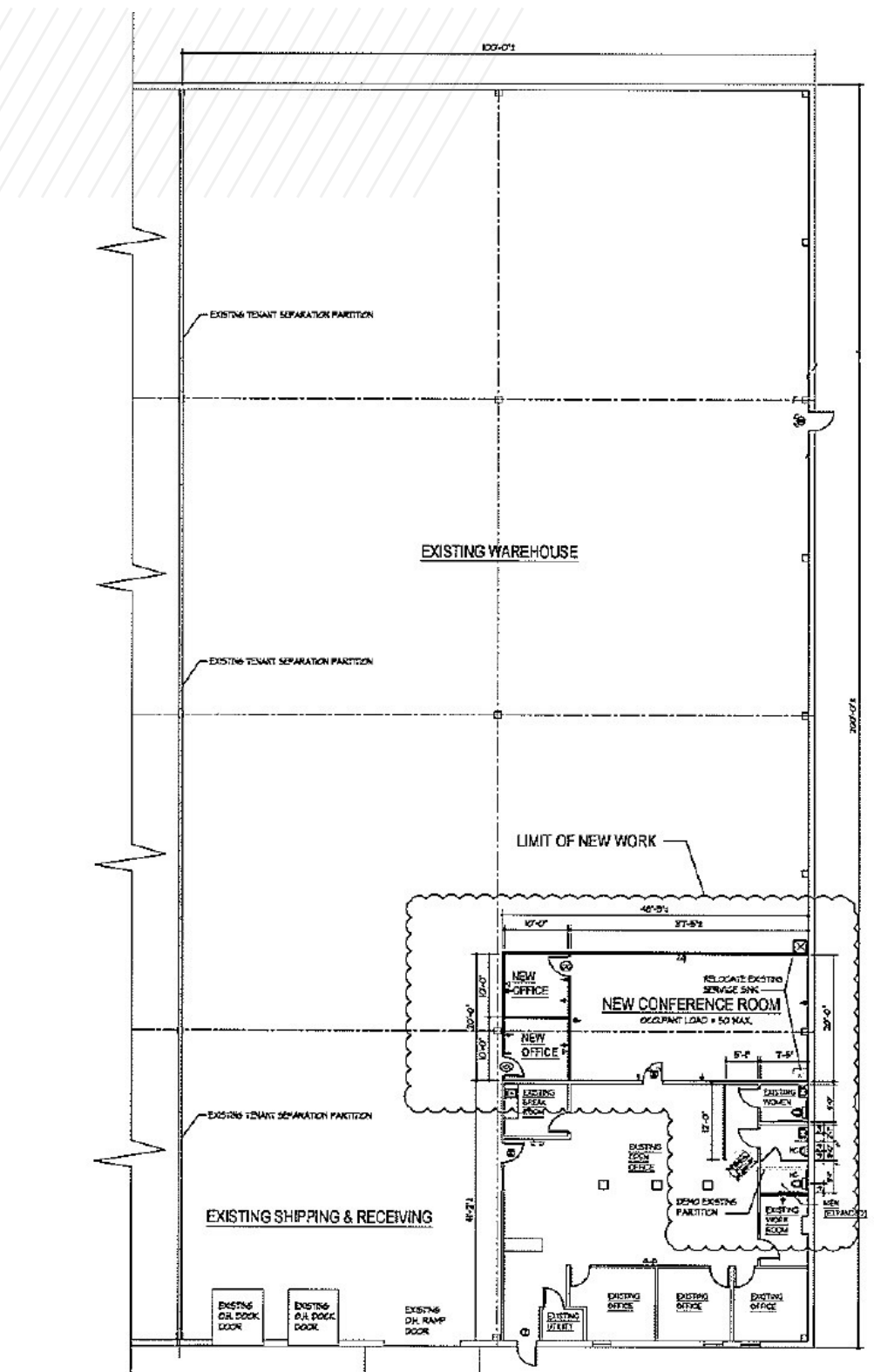
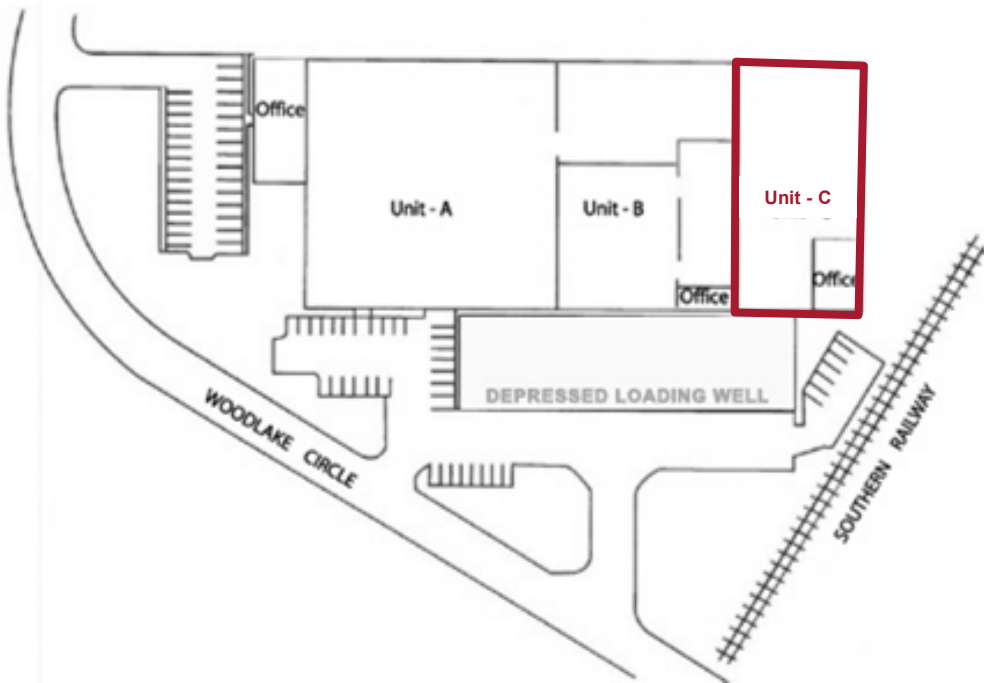


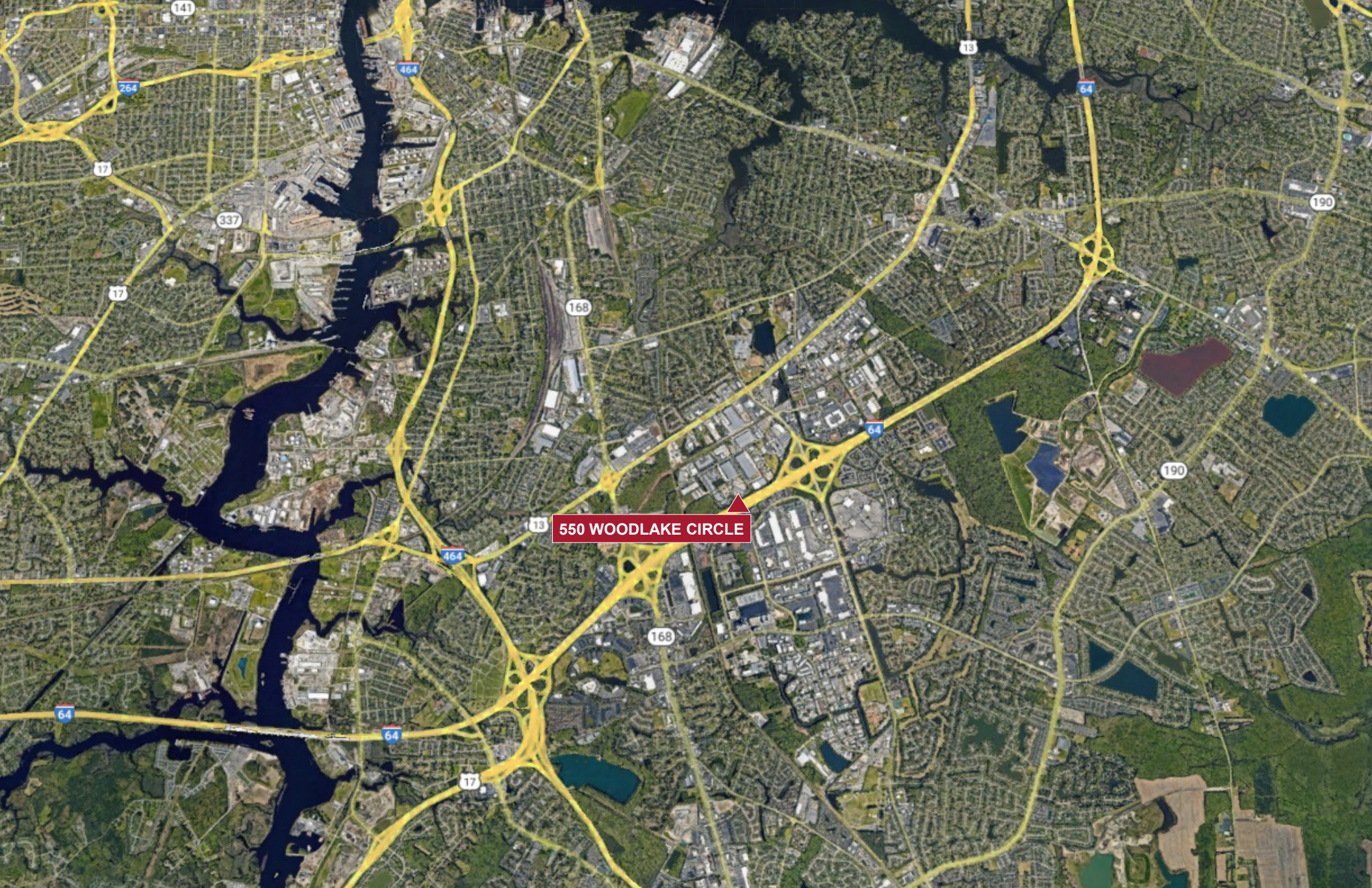
SPECIFICATIONS

| | |
|-----------------------|---|
| Site Total Size: | ±94,500 SF |
| Suite C Available: | ± 20,000 SF |
| Office: | 2,955 SF |
| Warehouse: | 17,045 SF 6" Reinforced concrete slab |
| Suite C - Loading: | <ul style="list-style-type: none"> – Two (2) 8' x 8' dock level doors (two with dock shelters, one with dock plate) – One (1) 8' x 10' dock level door (with leveler and dock shelter) – One (1) 8' x 8' with concrete drive-in ramp |
| Power: | 3 phase, 220 Amp, 277/480 Volt |
| Ceiling Height: | 22' 7" – 25' to the bottom of bar joist |
| Column Spacing: | 50' x 50' |
| Sprinkler System: | Wet System |
| Lighting: | LED System |
| Zoning: | PUD |
| Lease Expiration: | August 31st, 2028 |
| Available: | June 1, 2024 |
| Sublease Rate: | \$12.00 PSF, NNN |



SPACE PLAN





550 WOODLAKE CIRCLE

BRETT SAIN

First Vice President
757 213 4153
brett.sain@thalhimer.com

GEOFF POSTON, SIOR

Senior Vice President
757 650 8437
geoff.poston@thalhimer.com

The Town Center of Virginia Beach
222 Central Park Avenue, Suite 1500
Virginia Beach, VA 23462
757 499 2900 | Thalhimer.com

