

FOR LEASE | ± 71, 777 SF SPECULATIVE INDUSTRIAL BUILDING

BAYSIDE INDUSTRIAL

5732 Bayside Road
Virginia Beach, VA 23455



CUSHMAN &
WAKEFIELD

THALHIMER

BAYSIDE INDUSTRIAL

5732 Bayside Road, Virginia Beach, VA 23455

Property Features

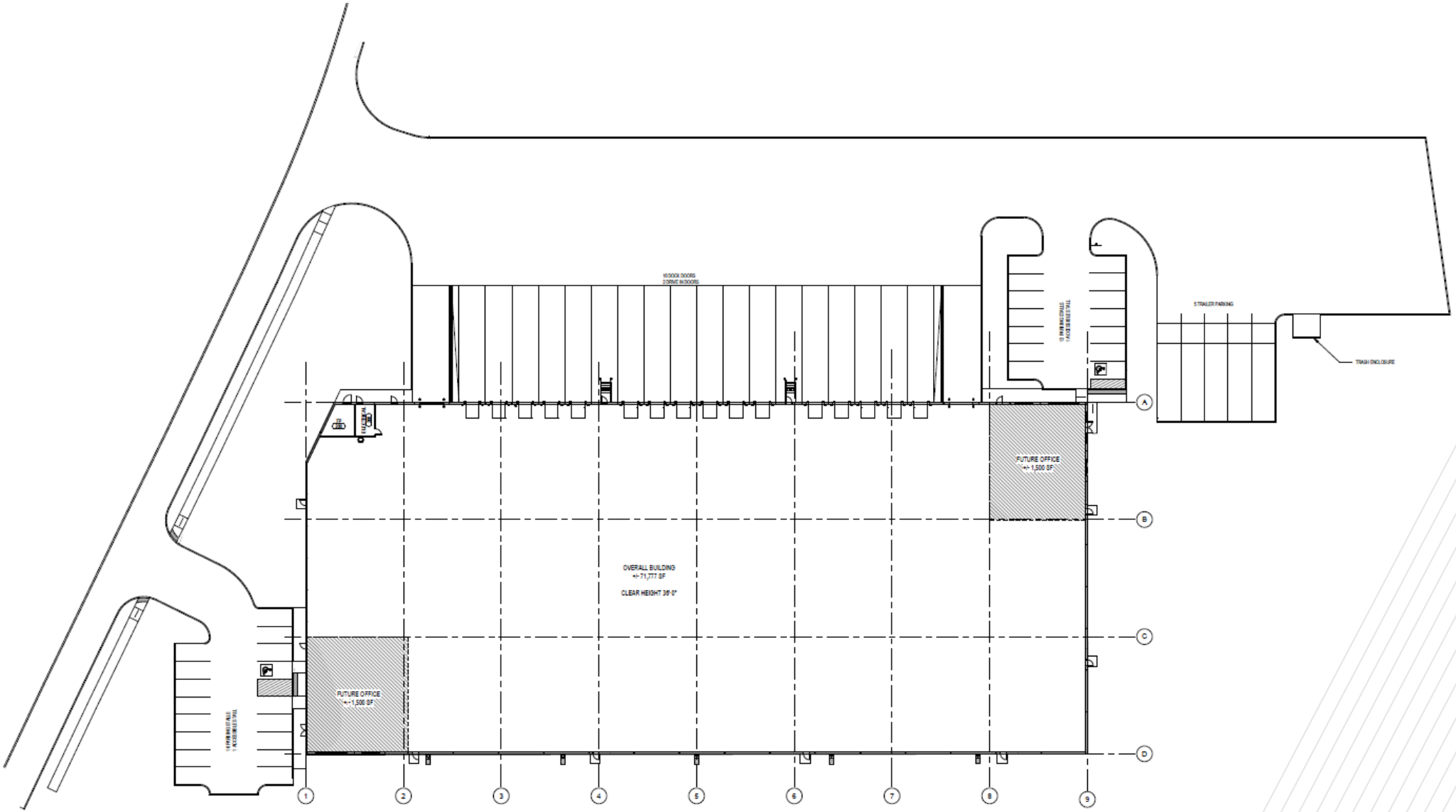
Space Available:	Up to ±71,777 SF total <i>Owner will consider multi-tenancy</i> ±1,683 SF office ±70,094 SF warehouse
Clear Height:	36'
Column Spacing:	50' x 40'
Loading:	16 dock doors with 2 drive in doors Bumpers at all 16 docks, with mechanical levelers at 8 (spaced every other bay) 135' truck court
Parking:	5 dedicated trailer parking spaces 31 parking spaces (29 regular, 2 accessible)
Power:	2,000 AMP building service (set up for 1,000 AMP service day 1)
Zoning:	I-1, light industrial
Sprinkler System:	ESFR, 60 PSI static, 40 PSI residual with 2,000 GPM flow
Lease Rate:	Contact Broker for Pricing OPEX: \$2.00 PSF (2024 est.)
Availability:	August 2024



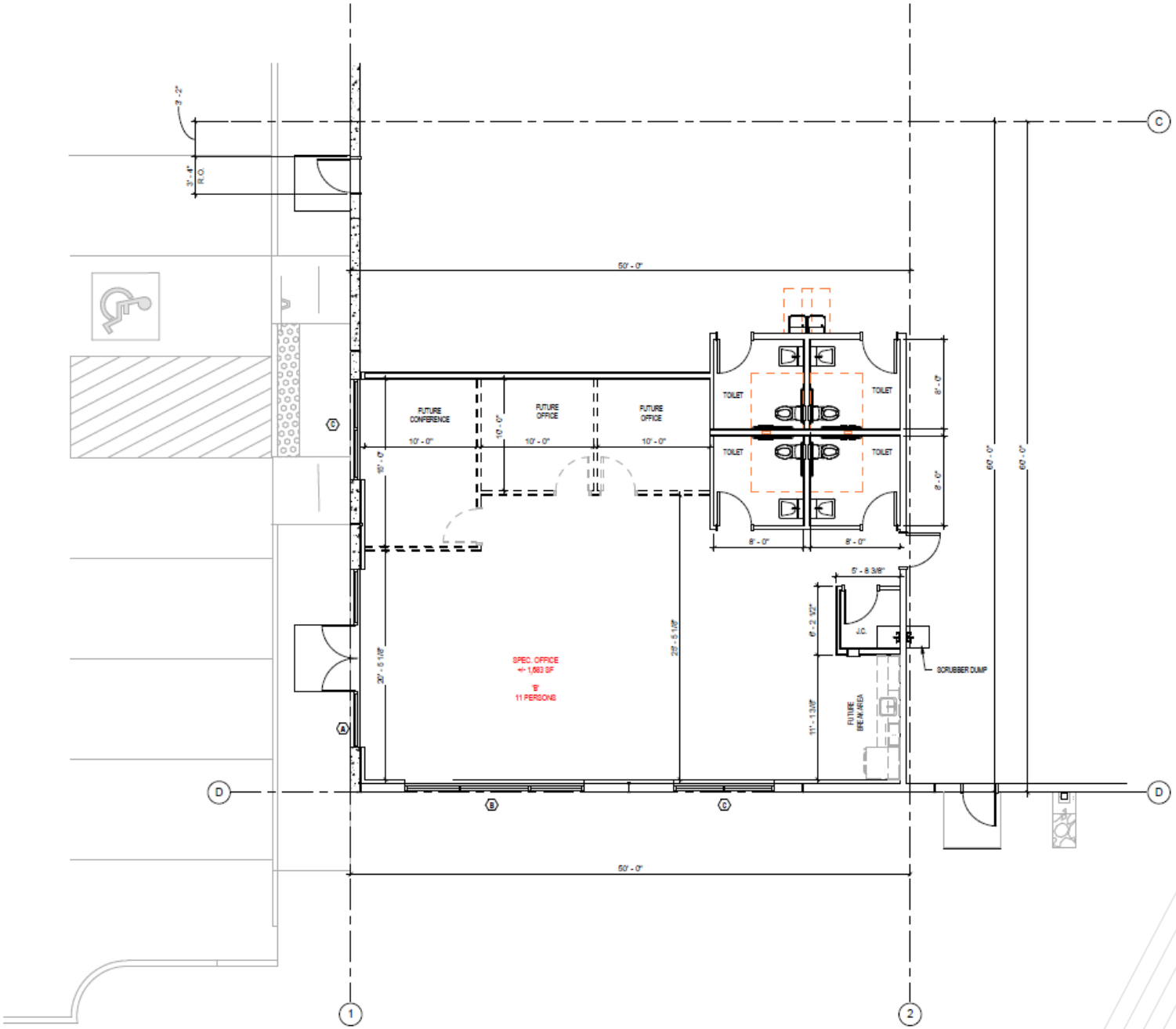
SITE RENDERING



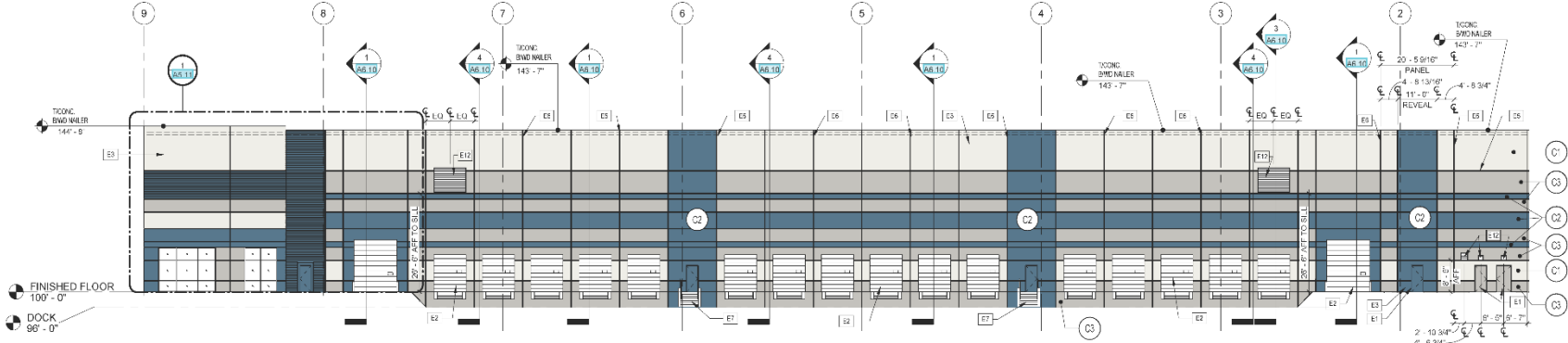
SITE PLAN



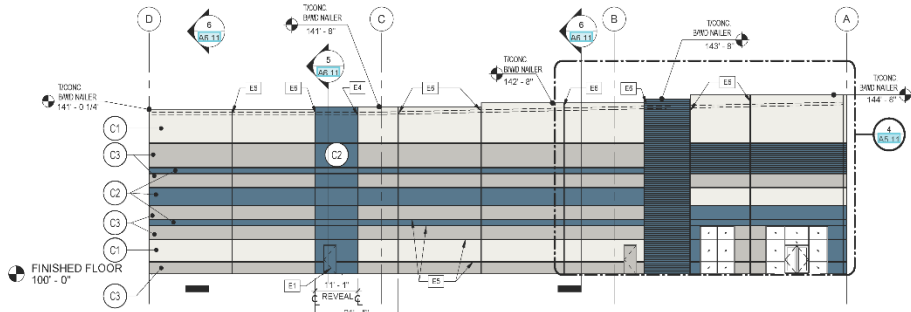
SPECULATIVE OFFICE PLAN



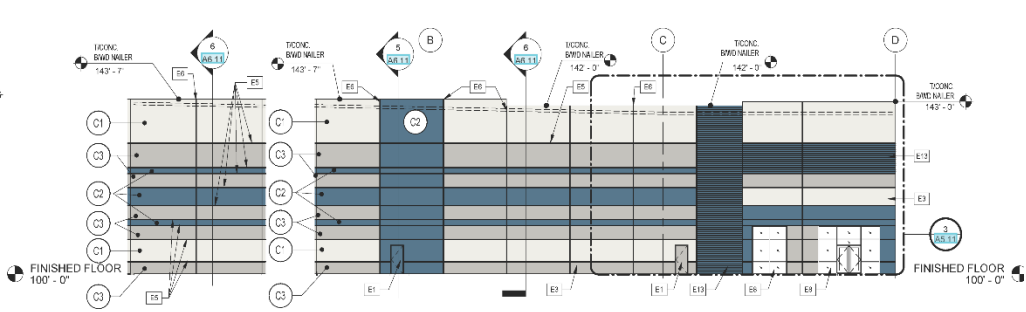
SITE EXTERIOR ELEVATIONS



1 EXTERIOR ELEVATION - WEST
AS.10 1/16" = 1'-0"

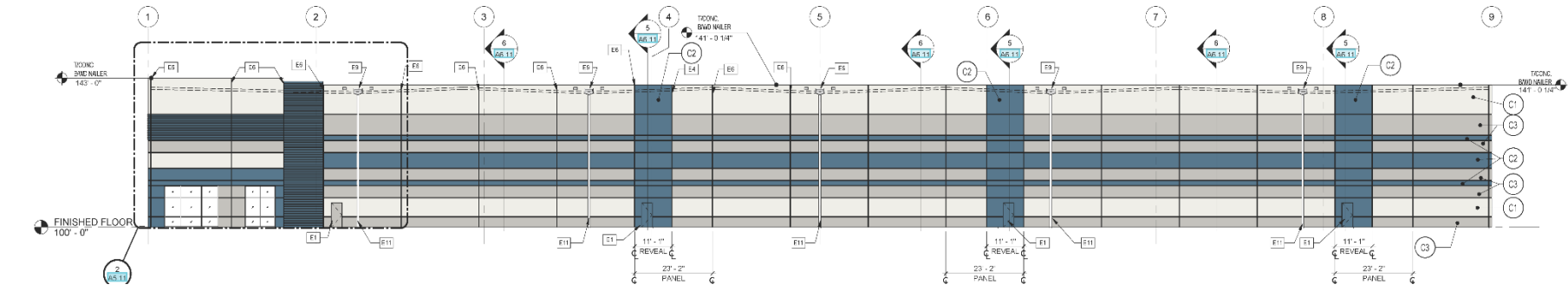


2 EXTERIOR ELEVATION - NORTH
AS.10 1/16" = 1'-0"



5 EXT. ELEV. @ CHAMFER
AS.10 1/16" = 1'-0"

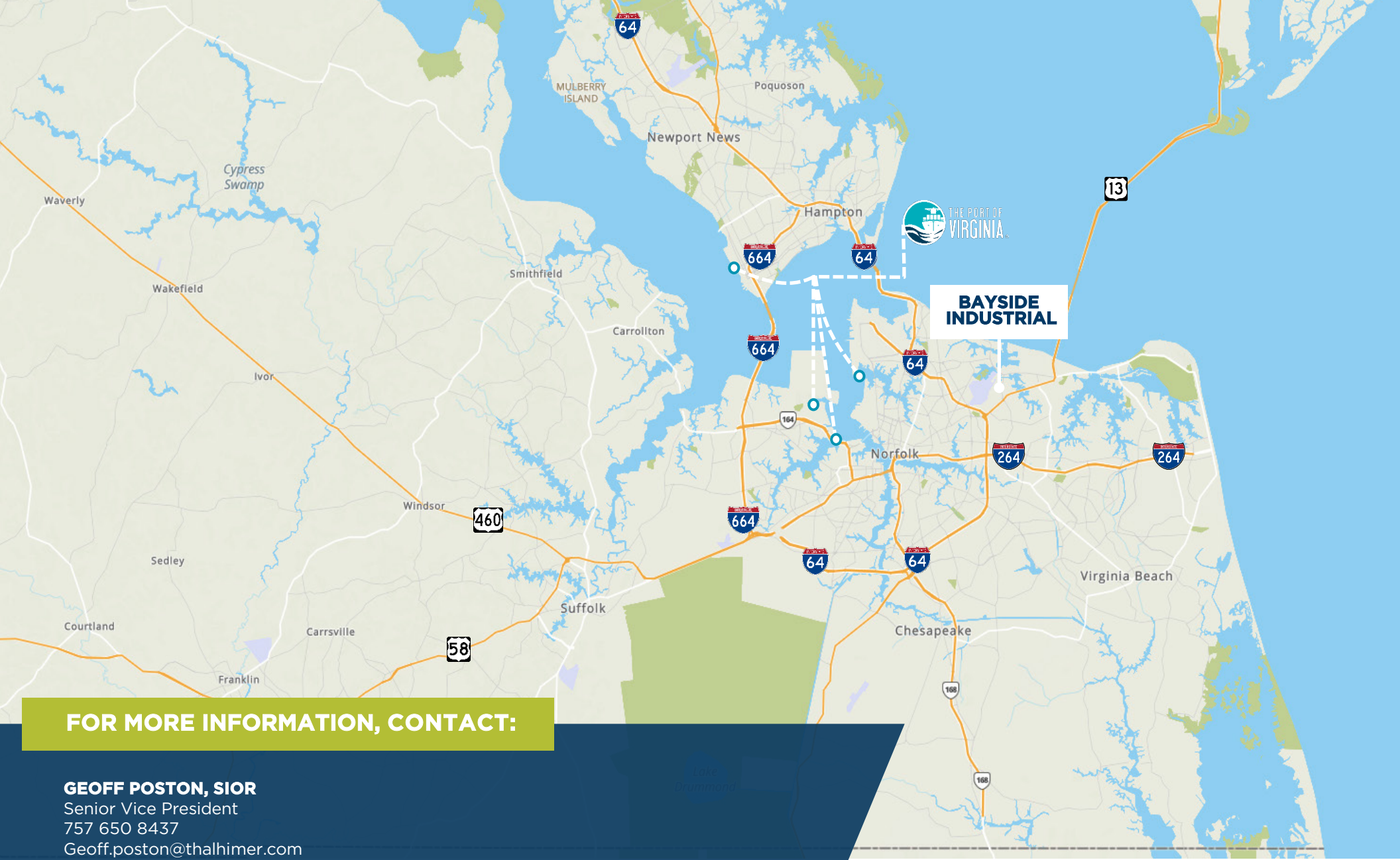
3 EXTERIOR ELEVATION - SOUTH
AS.10 1/16" = 1'-0"



2 AS.10

SURROUNDING AREA





FOR MORE INFORMATION, CONTACT:

GEOFF POSTON, SIOR
Senior Vice President
757 650 8437
Geoff.poston@thalhimer.com

THE TOWN CENTER OF VIRGINIA BEACH
222 CENTRAL PARK AVENUE, SUITE 1500
VIRGINIA BEACH, VIRGINIA 23462
757 499 2900 | www.thalhimer.com

Independently Owned and Operated / A Member of the Cushman & Wakefield Alliance
Cushman Wakefield | Thalhimer © 2023. No warranty or representation, express or implied, is made to the accuracy or completeness of the information contained herein, and same is submitted subject to errors, omissions, change of price, rental or other conditions, withdrawal without notice, and to any special listing conditions imposed by the property owner(s). As applicable, we make no representation as to the condition of the property (or properties) in question.

