

10205 – 10221 SOUTHPOINT PKWY.



THALHIMER

FREDERICKSBURG, VA 22407

FOR LEASE / RETAIL



Mark J. Banach

Senior Associate | 540 322 4151

mark.banach@thalhimer.com

PROPERTY FEATURES

- Retail Strip in Southpoint Shoppes that includes Walmart, Lowes, retail, Buffalo Wild Wings, and Kickback Jack's
- Near Cosner's Corner that includes Target, Publix, and Kohls
- Fantastic new residential communities at Southpoint Landing
- Great proximity to I-95 Interchange; exit 126 and Route 1

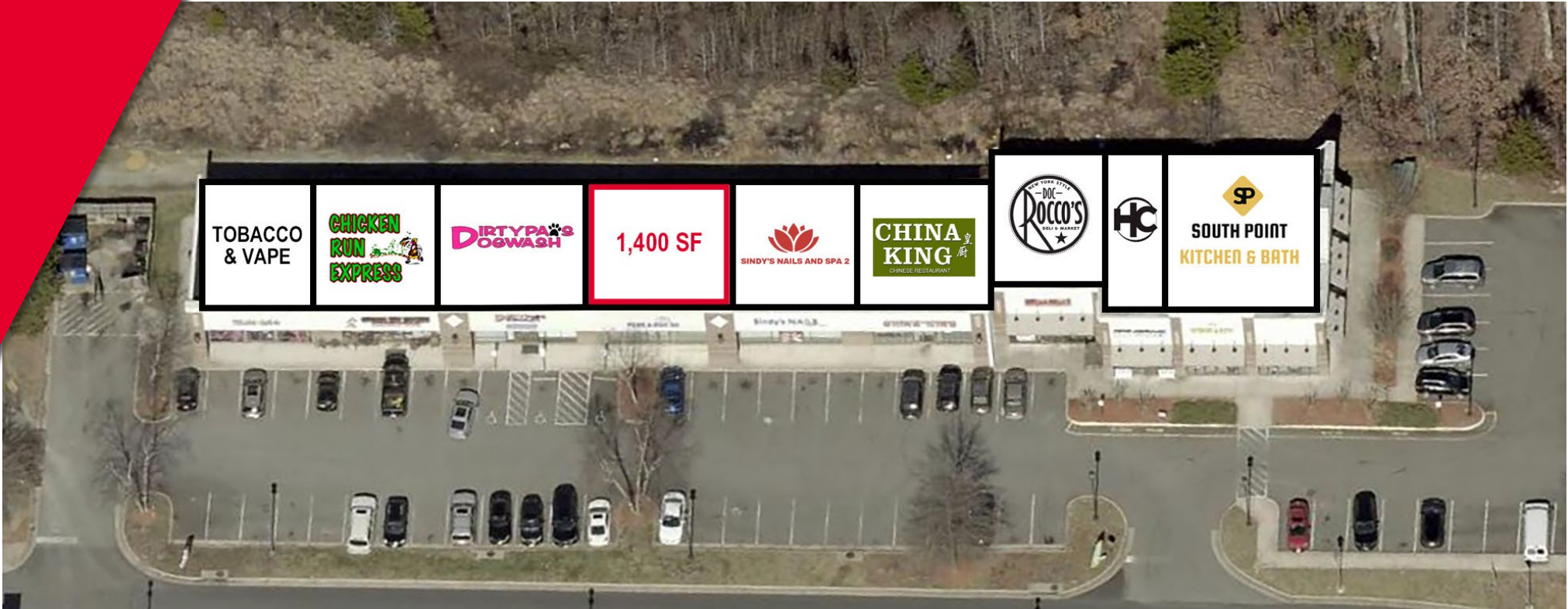
SPECIFICATIONS

Total Size:	13,200 SF
Available SF:	Unit 10215: 1,400 SF
Lease Rate:	\$3,500 / Month Gross
Timing:	Available Immediately

10205 – 10221 SOUTHPPOINT PKWY.



FREDERICKSBURG, VA 22407



NEARBY TENANTS/ RETAILERS



TRAFFIC COUNTS

PATRIOT HWY. / RT. 1	53,000 VPD	COURTHOUSE RD. / RT. 208	39,000 VPD
SOUTHPPOINT PKWY.	22,000 VPD	INTERSTATE 95	113,000 VPD

DEMOGRAPHICS

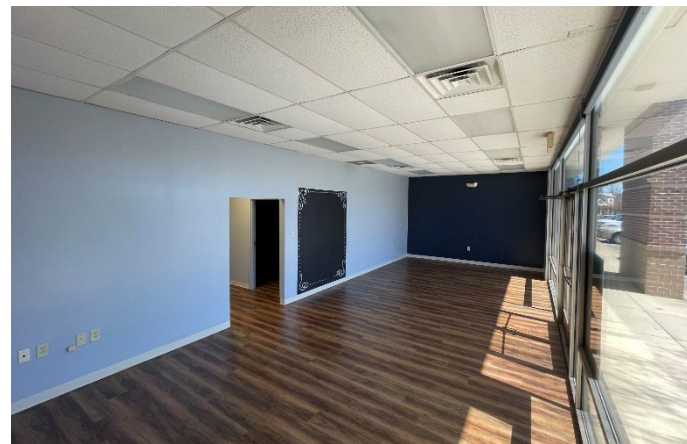
	1 MILE	3 MILES	5 MILES
POPULATION	7,208	58,509	114,117
DAYTIME POPULATION	10,219	50,794	114,717
HOUSEHOLDS	3,099	21,332	41,273
AVERAG H.H. INCOME	\$116,163	\$125,289	\$123,767

10205 – 10221 SOUTHPOINT PKWY.



THALHIMER

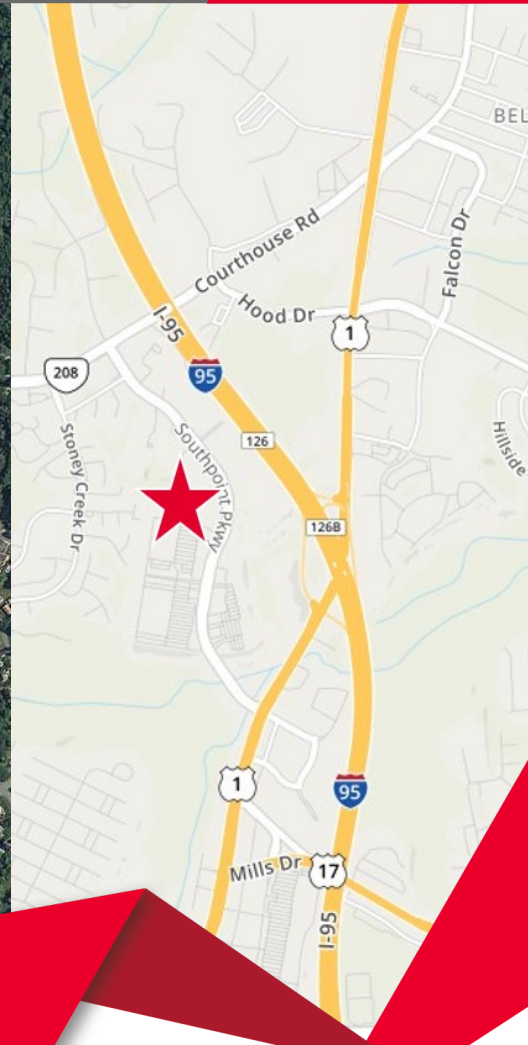
FREDERICKSBURG, VA 22407



10205 – 10221 SOUTHPOINT PKWY.



FREDERICKSBURG, VA 22407



Mark J. Banach

Senior Associate | 540 322 4151

mark.banach@thalhimer.com

1125 Emancipation Hwy. | Suite 350
Fredericksburg, VA 22401
www.thalhimer.com

Independently Owned and Operated / A Member of the Cushman & Wakefield Alliance

Cushman Wakefield | Thalhimer ©2024. No warranty or representation, express or implied, is made to the accuracy or completeness of the information contained herein, and same is submitted subject to errors, omissions, change of price, rental or other conditions, withdrawal without notice, and to any special listing conditions, imposed by the property owner(s). As applicable, we make no representation as to the condition of the property (or properties) in question.