



**FOR LEASE**  
**2,262 – 4,721 SF**

**Parkway Executive Center**

325 Volvo Parkway  
Chesapeake, Virginia 23320

**WICK SMITH**  
Senior Vice President  
757 457 9998  
wick.smith@thalhimer.com

**The Town Center of Virginia Beach**  
222 Central Park Avenue, Suite 1500  
Virginia Beach, Virginia 23462  
757 499 2900 | Thalhimer.com





**SITE DETAILS**

**PROPERTY SIZE:** 11,922 SF  
**Suite 110:** 2,262 SF  
**Suite 120:** 2,459 SF  
**Total Available:** 2,262 – 4,721

**LOCATION** Greenbrier submarket—one of the strongest-performing markets in the Hampton Roads MSA

**PARKING** 55 Surface spaces (4.62/1,000 SF)

**ZONING** PUD

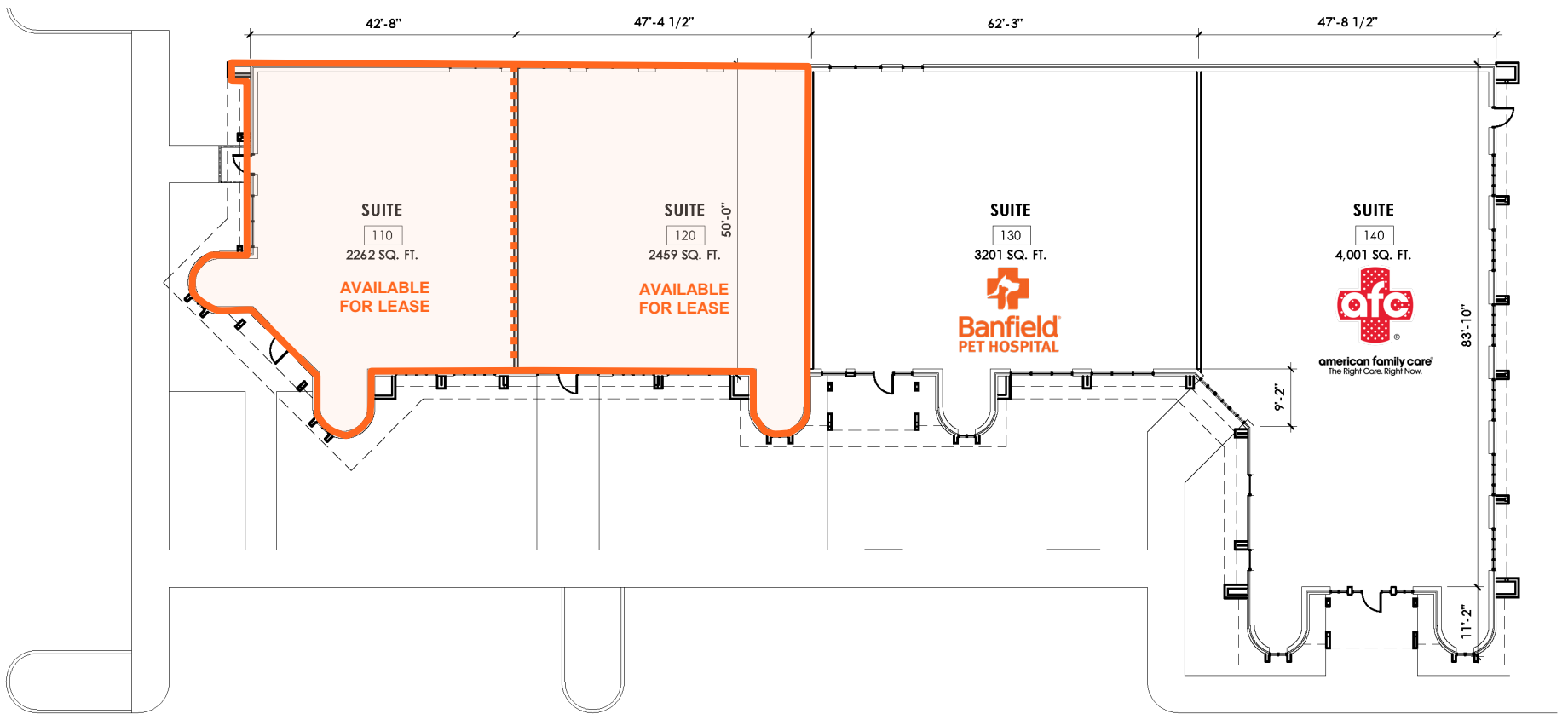
**AVAILABLE** 1Q 2025

**LEASE RATE** \$45.00 /FT, NNN



DEMOGRAPHICS	2 mile	5 mile	10 mile
2010 Population	36,347	192,259	682,959
2023 Population	40,450	210,187	718,288
2028 Population Projection	41,581	215,160	727,185
Annual Growth 2010-2023	0.9%	0.7%	0.4%
Annual Growth 2023-2028	0.6%	0.5%	0.2%
Median Age	37.8	37.4	36.2
Bachelor's Degree or Higher	33%	30%	30%
U.S. Armed Forces	1,266	6,232	25,540

SITE PLAN



GROSS BUILDING AREA = 11,922 SQ. FT.

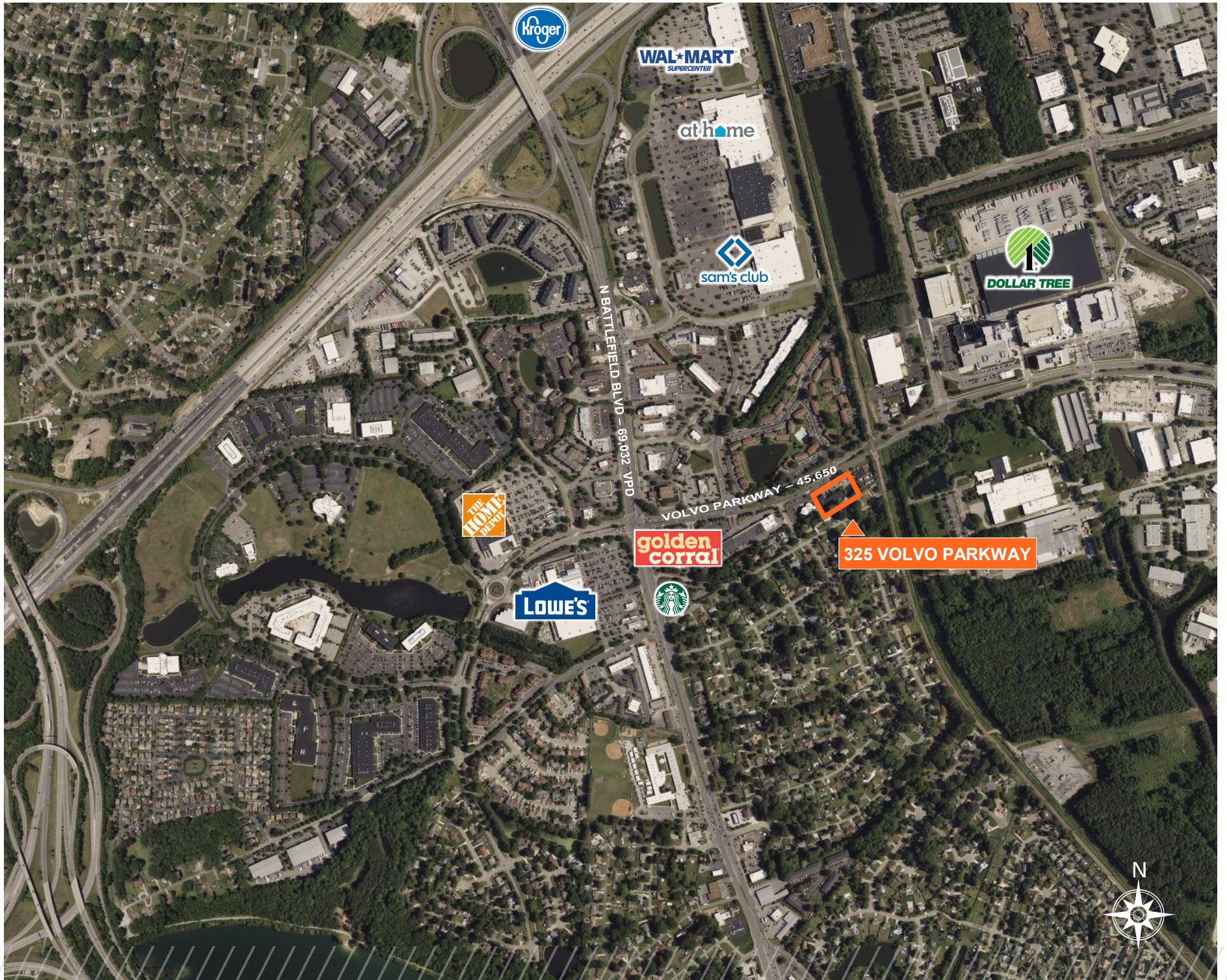


CONCEPTUAL RENDERINGS

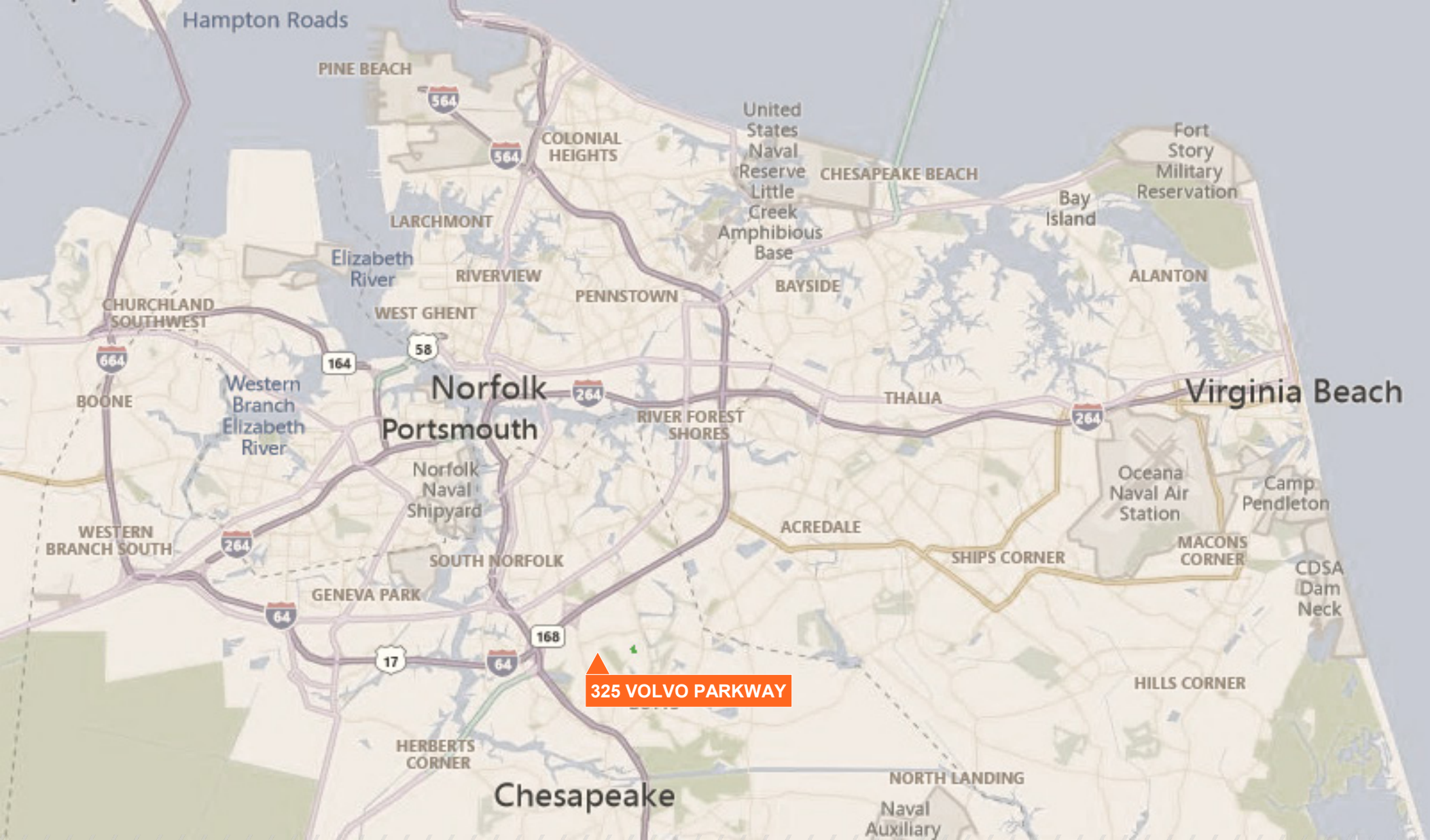




SITE AERIAL







**WICK SMITH**  
Senior Vice President  
757 457 9998  
wick.smith@thalhimer.com

The Town Center of Virginia Beach  
222 Central Park Avenue, Suite 1500  
Virginia Beach, Virginia 23462  
757 499 2900 | Thalhimer.com

