



THALHIMER

OFFICE/WAREHOUSE FOR LEASE

7640 Whitepine Road

Chesterfield Airpark | Chesterfield County, Virginia

10,000 SF AVAILABLE



Dock & Drive-in Loading | Convenient to Route 288 & I-95

For more information, contact:

GREGG W. BECK

First Vice President

804 697 3563

gregg.beck@thalhimer.com

CHRISSE CHAPPELL

Associate

804 344 7197

chrissy.chappell@thalhimer.com

Thalhimer Center
11100 W. Broad Street
Glen Allen, VA 23060
www.thalhimer.com

Independently Owned and Operated / A Member of the Cushman & Wakefield Alliance

Cushman & Wakefield | Thalhimer © 2015. No warranty or representation, express or implied, is made to the accuracy or completeness of the information contained herein, and same is submitted subject to errors, omissions, change of price, rental or other conditions, withdrawal without notice, and to any special listing conditions imposed by the property owner(s). As applicable, we make no representation as to the condition of the property (or properties) in question.

Property Features

- 10,000 SF OFFICE/WAREHOUSE AVAILABLE
- 3,500± SF office
- 4,500± SF air-conditioned production area
- 2,000± SF warehouse
- Dock + drive-in loading
- Large parking area
- Convenient to Route 288 & I-95

Building Features

Building Size	10,000 SF
Timing	Available immediately
Asking Price	\$12.00 PSF, Industrial Gross



For more information, contact:

GREGG W. BECK

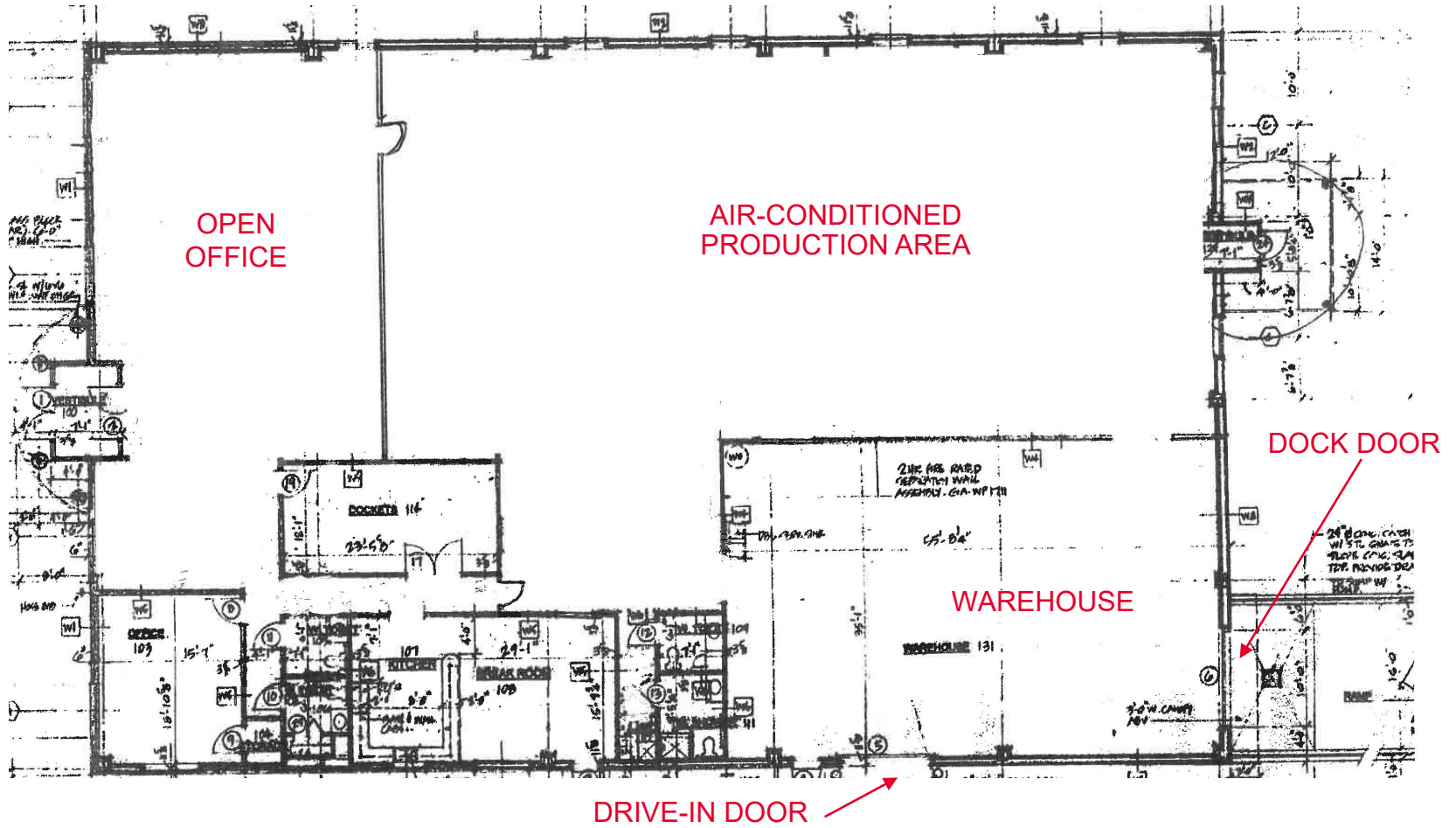
First Vice President
 804 697 3563
gregg.beck@thalhimer.com

CHRISSEY CHAPPELL

Associate
 804 344 7197
chrissy.chappell@thalhimer.com

Thalhimer Center
 11100 W. Broad Street
 Glen Allen, VA 23060
www.thalhimer.com

Floor Plan



For more information, contact:

GREGG W. BECK
First Vice President
804 697 3563
gregg.beck@thalhimer.com

CHRISSE CHAPPELL
Associate
804 344 7197
chrissy.chappell@thalhimer.com

Thalhimer Center
11100 W. Broad Street
Glen Allen, VA 23060
www.thalhimer.com