

**CLEVELAND PARK BUSINESS CENTER**  
**5741 CLEVELAND STREET**  
SUITE 240, VIRGINIA BEACH, VA 23462

**FOR SALE 1,100 SF**



**ROB WRIGHT**  
Senior Vice President  
757 499 2896  
rob.wright@thalhimer.com

**The Town Center of Virginia Beach**  
222 Central Park Avenue, Suite 1500  
Virginia Beach, Virginia 23462  
757 499 2900 | www.thalhimer.com



**THALHIMER**

# PROPERTY FEATURES

**MEDICAL OFFICE CONDOMINIUM: SUITE 240**

**AVAILABLE SPACE: 1,100 SF**

**FOR SALE: \$286,000**

- Three large offices and/or conference rooms (*abundance of natural light*)
- Kitchenette/breakroom
- Reception area with counter
- Private restroom
- Server room/storage closet
- Workroom
- New floors
- Existing FF&E can be included

---

## BUILDING SPECS

Property Size:	24,000 SF, 1.79 Acres
Year Built:	2006
Stories:	Three
Parking	93 Surface spaces; 5/1,000 SF
Signage	Interstate visibility/exposure
Zoning	O-2

---

## BUILDING AMMENITIES

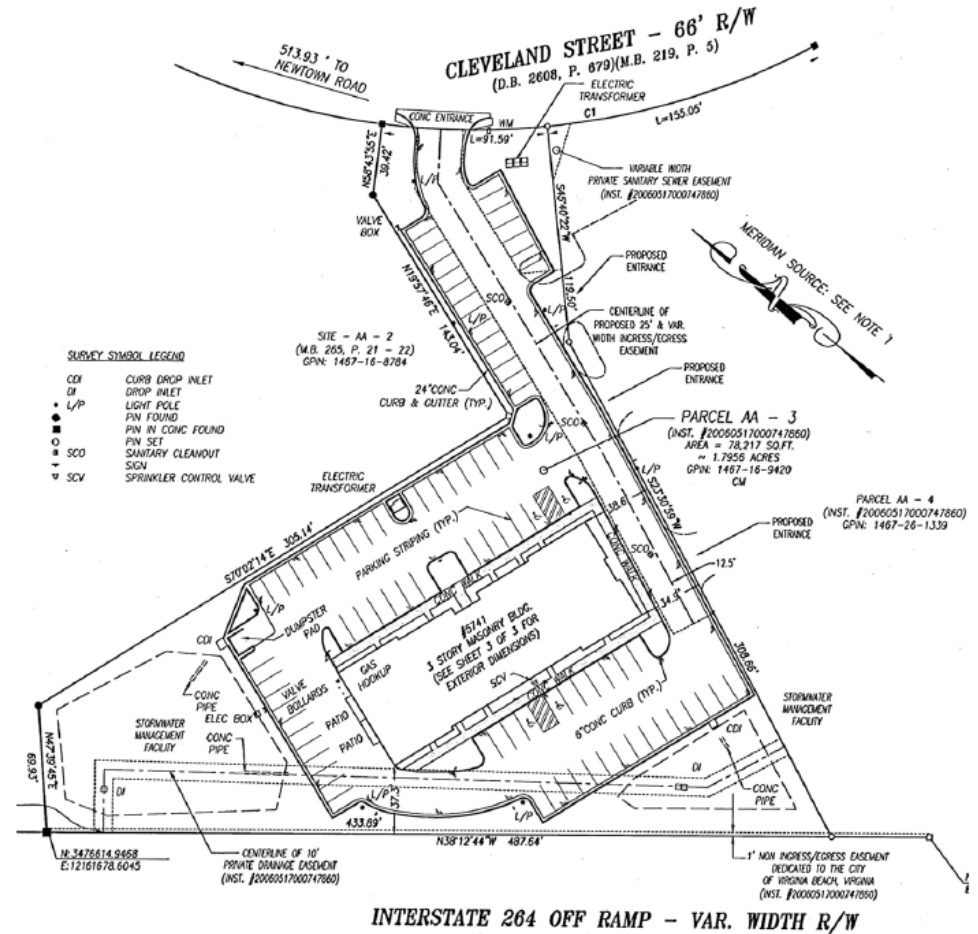
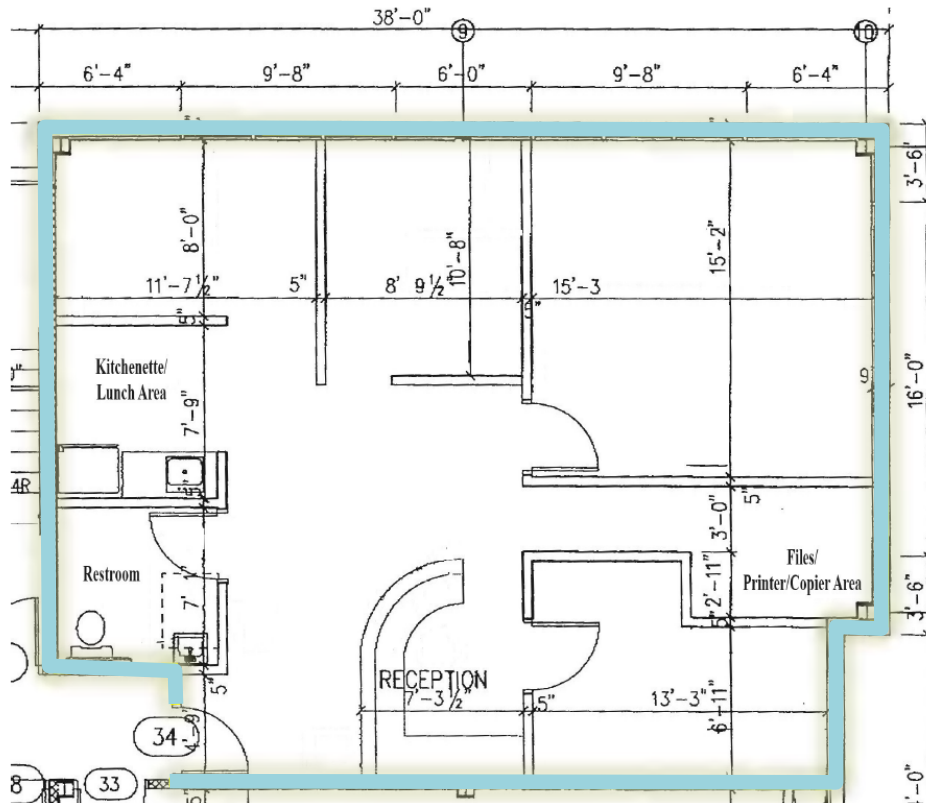
- High Ceilings
- Plug & Play
- Signage
- Security system: Elevator lock-out control
- Desirable medical corridor anchored by Sentara Leigh Hospital
- Immediate access to I-264 at Newtown Road; and I-64





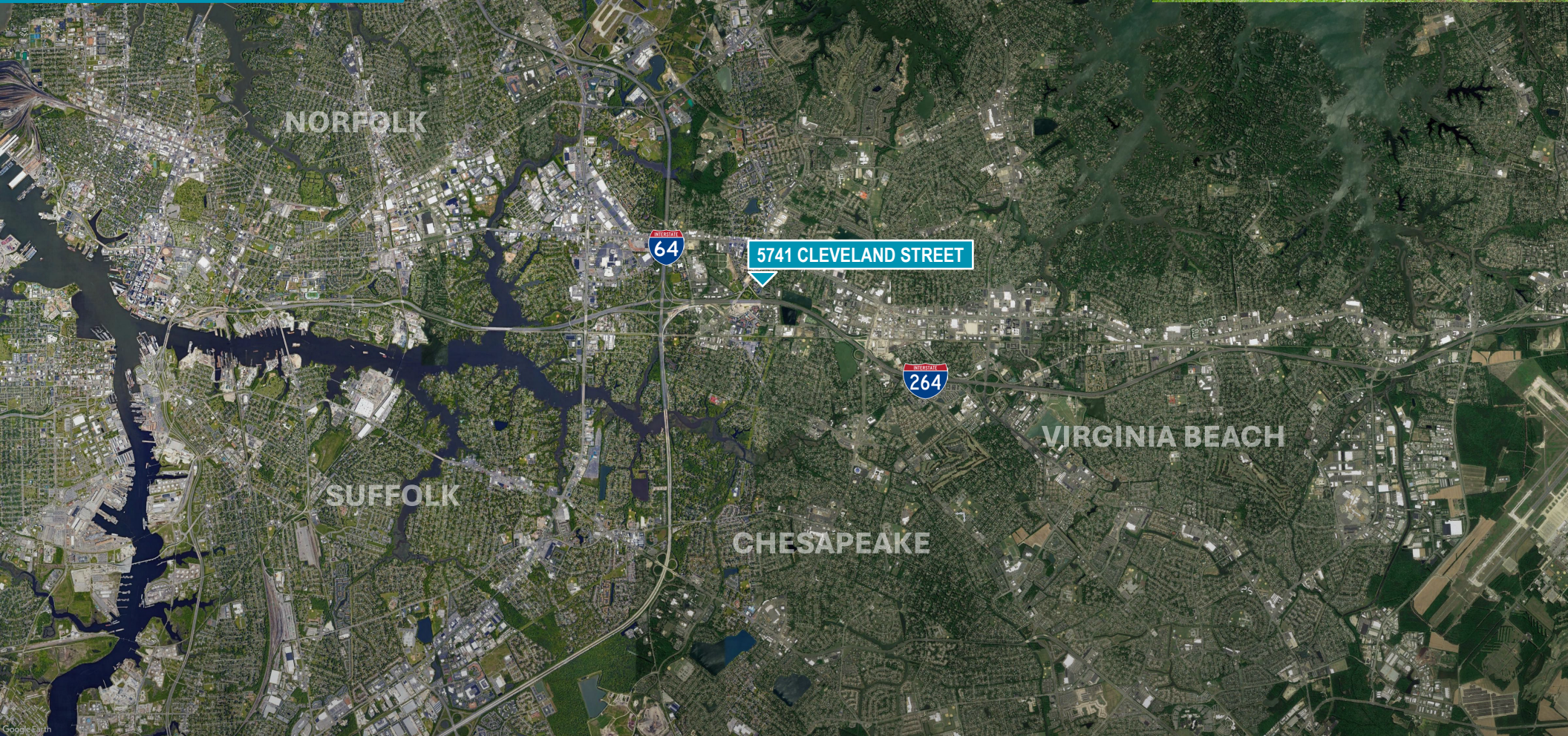
# PROPERTY FEATURES

## SECOND FLOOR PLAN SUITE 240





# SURROUNDING AREA



## ROB WRIGHT

Senior Vice President  
757 499 2896  
rob.wright@thalhimer.com

The Town Center of Virginia Beach  
222 Central Park Avenue, Suite 1500  
Virginia Beach, Virginia 23462  
757 499 2900 | www.thalhimer.com



**THALHIMER**

Independently Owned and Operated / A Member of the Cushman & Wakefield Alliance  
Cushman Wakefield | Thalhimer ©2024. No warranty or representation, express or implied, is made to the accuracy or completeness of the information contained herein, and same is submitted subject to errors, omissions, change of price, rental or other conditions, withdrawal without notice, and to any special listing conditions, imposed by the property owner(s). As applicable, we make no representation as to the condition of the property (or properties) in question.