

PROVEN RESULTS



CLIENT

Berman Kappler Properties



LOCATION

2201 W Broad Street
Richmond, VA 23220



REAL ESTATE TYPE

Office



SQUARE FOOTAGE

60,000 SF

PROJECT OVERVIEW

- Class A Historic Office Renovation
- Located near Scott's Addition in central Richmond, a vibrant cultural hub packed with loft apartments, restaurants, and breweries
- Walker's paradise proximate to new Pulse bus line, Whole Foods, and Carmax
- 150,000+ SF of new leases within two blocks

IMPROVEMENTS & AMENITIES

- Adjoining 170-Space Multi-Level Covered Parking Deck
- First Class Fitness Center on Site
- New Roof + State-of-the-Art Heating & Cooling System
- Energy Star Certified
- Rooftop Covered Terrace
- Common Area & Lobby Renovations



PROVEN
RESULTS



THE BOOKBINDERY
Richmond, VA



PROVEN RESULTS



LOCATION
The Bookbindery
Richmond, VA



REAL ESTATE TYPE
Office



SQUARE FOOTAGE
13,675 SF

GOAL: Create an office environment reflective of company culture and focus on employee engagement.

RESULT: Central location in a historic building, heavily-amenitized suite with a mix of collaboration space, work areas, and individual offices.

**TOP
WORK
PLACES
2023**

Richmond Times-Dispatch

**TOP
WORK
PLACES
2022**

Richmond Times-Dispatch

**TOP
WORK
PLACES
2021**

Richmond Times-Dispatch

**TOP
WORK
PLACES
2020**

Richmond Times-Dispatch



PROVEN RESULTS



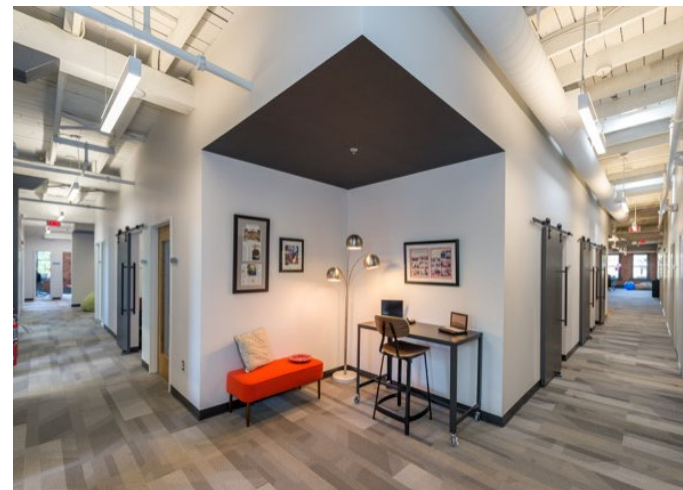
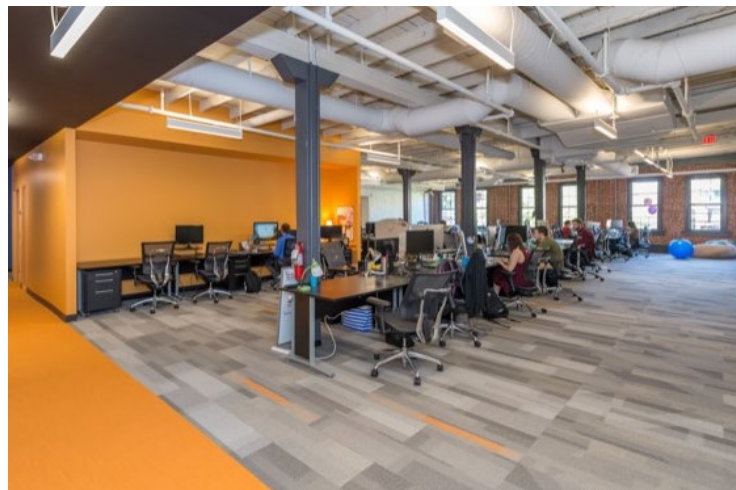
LOCATION
The Bookbindery
Richmond, VA



REAL ESTATE TYPE
Office



SQUARE FOOTAGE
13,675 SF



PROVEN
RESULTS



THE BOOKBINDERY
Richmond, VA

GROOME
transportation



SQUARE FOOTAGE
8,168 SF



PROVEN RESULTS



CLIENT

Berman Kappler Properties



LOCATION

2201 W Broad Street
Richmond, VA 23220



REAL ESTATE TYPE

Office



SQUARE FOOTAGE

60,000 SF

LEASING AGENT



Mark Douglas,
CCIM, SIOR

Senior Vice President



thalhimer.com