



Property Features

- +/- 0.36 acre developable pad available on corner of Main Street and Pittsylvania Ave
- Level lot with excellent visibility at a signalized intersection
- 120' frontage on Main Street at one of the busiest intersections in Altavista
- Existing survey and environmental report on file
- Lot equipped with sewer/power hookups and easy access to public water

Demographics

	1 Mile	3 Miles	5 Miles
Population	1,128	6,994	10,147
No. of Households	514	3,050	4,443
Avg. HH Income	\$67,908	\$64,777	\$68,661
Daytime Population	962	6,836	9,470

Traffic Counts

Main Street	3,600 VPD
-------------	-----------

For more information, contact:

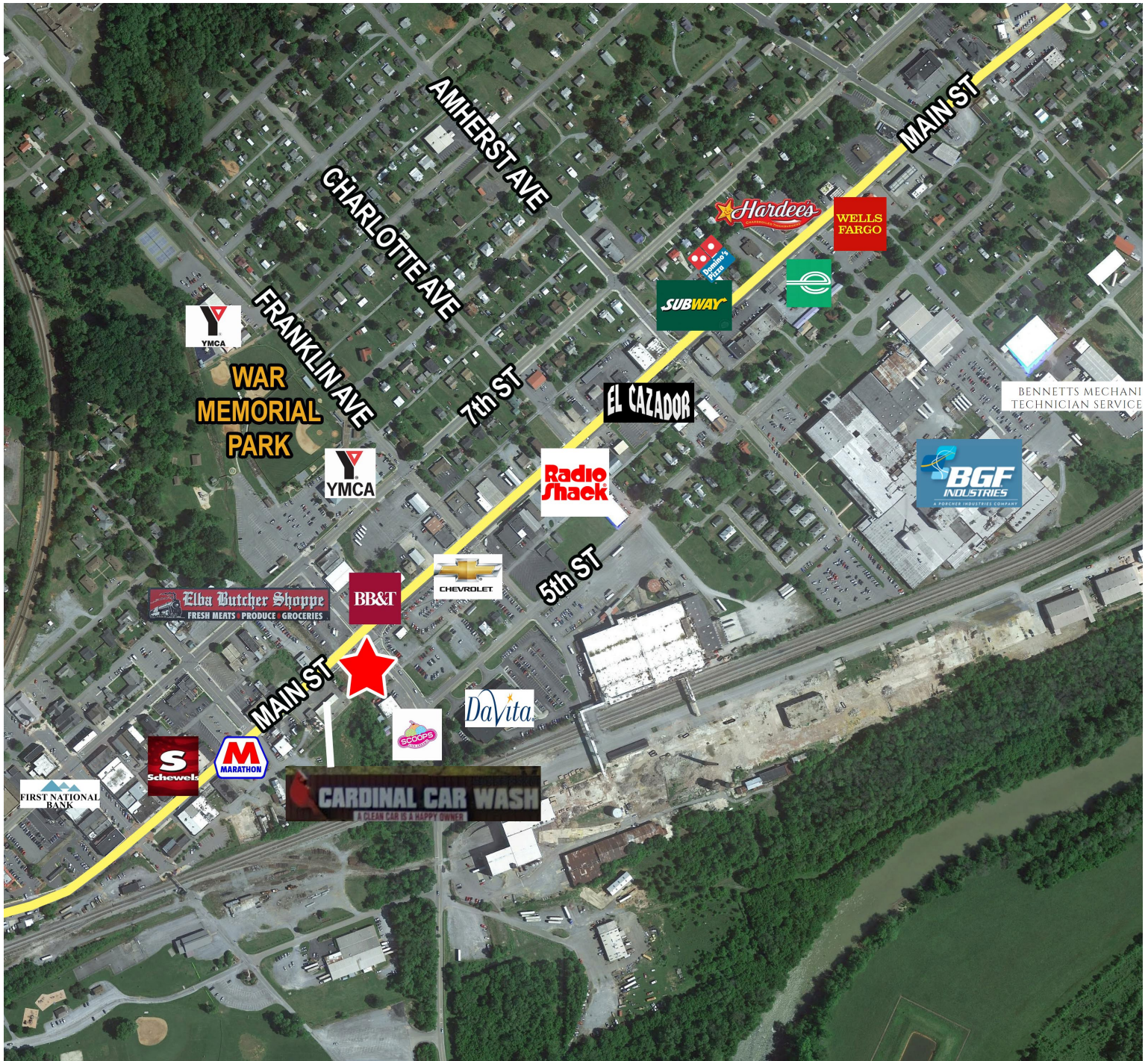
NORMAN MOON, CCIM,
SIOR, CRE
 First Vice President
 434 455 2302
norman.moon@thalhimer.com

GEORGE LUPTON, CCIM
 Senior Associate
 434 455 2306
george.lupton@thalhimer.com

Coffee Crossing
 6000 Boonsboro Road, Suite A
 Lynchburg, VA 24503
www.thalhimer.com

Independently Owned and Operated / A Member of the Cushman & Wakefield Alliance

Cushman & Wakefield | Thalhimer © 2015. No warranty or representation, express or implied, is made to the accuracy or completeness of the information contained herein, and same is submitted subject to errors, omissions, change of price, rental or other conditions, withdrawal without notice, and to any special listing conditions imposed by the property owner(s). As applicable, we make no representation as to the condition of the property (or properties) in question.



For more information, contact:

NORMAN MOON, CCIM,
SIOR, CRE

First Vice President
434 455 2302

norman.moon@thalhimer.com

GEORGE LUPTON, CCIM

Senior Associate

434 455 2306

george.lupton@thalhimer.com

Coffee Crossing
6000 Boonsboro Road, Suite A
Lynchburg, VA 24503
www.thalhimer.com

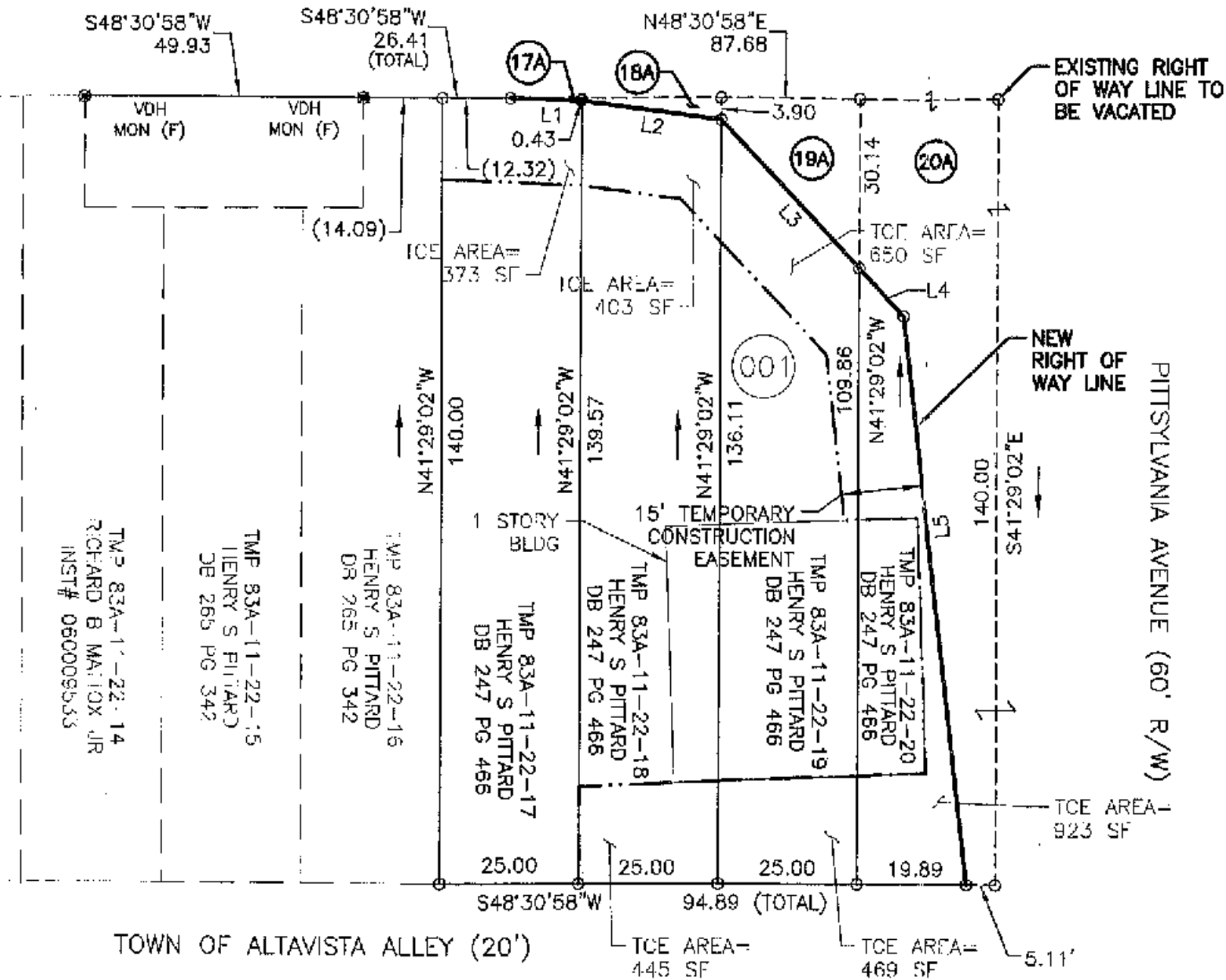
Independently Owned and Operated / A Member of the Cushman & Wakefield Alliance

Cushman & Wakefield | Thalhimer © 2015. No warranty or representation, express or implied, is made to the accuracy or completeness of the information contained herein, and same is submitted subject to errors, omissions, change of price, rental or other conditions, withdrawal without notice, and to any special listing conditions imposed by the property owner(s). As applicable, we make no representation as to the condition of the property (or properties) in question.

DEVELOPABLE PAD AVAILABLE FOR SALE
637 MAIN STREET

Altavista, VA 24517

MAIN STREET (70' R/W)



For more information, contact:

NORMAN MOON, CCIM,
SIOR, CRE

First Vice President
434 455 2302

norman.moon@thalhimer.com

GEORGE LUPTON, CCIM

Senior Associate
434 455 2306

george.lupton@thalhimer.com

Coffee Crossing
6000 Boonsboro Road, Suite A
Lynchburg, VA 24503
www.thalhimer.com

Independently Owned and Operated / A Member of the Cushman & Wakefield Alliance

Cushman & Wakefield / Thalhimer © 2015. No warranty or representation, express or implied, is made to the accuracy or completeness of the information contained herein, and same is submitted subject to errors, omissions, change of price, rental or other conditions, withdrawal without notice, and to any special listing conditions imposed by the property owner(s). As applicable, we make no representation as to the condition of the property (or properties) in question.