



OFFICE FOR LEASE

706 LIBBIE AVENUE

RICHMOND, VA

UP TO 3,000 SF AVAILABLE



**CUSHMAN &
WAKEFIELD**

THALHIMER



PROPERTY HIGHLIGHTS



SQUARE FOOTAGE

Up to 3,000 SF available

- 2,290 SF on 1st floor
- 775 USF on 2nd floor



FLOOR PLAN

- Flexible layout available
- Mock up includes up to 10 offices, 2 conference rooms, break area and restrooms per floor
- Classic Westhampton exterior



AVAILABILITY

Q2-Q3 2025



PARKING

Off-street parking available

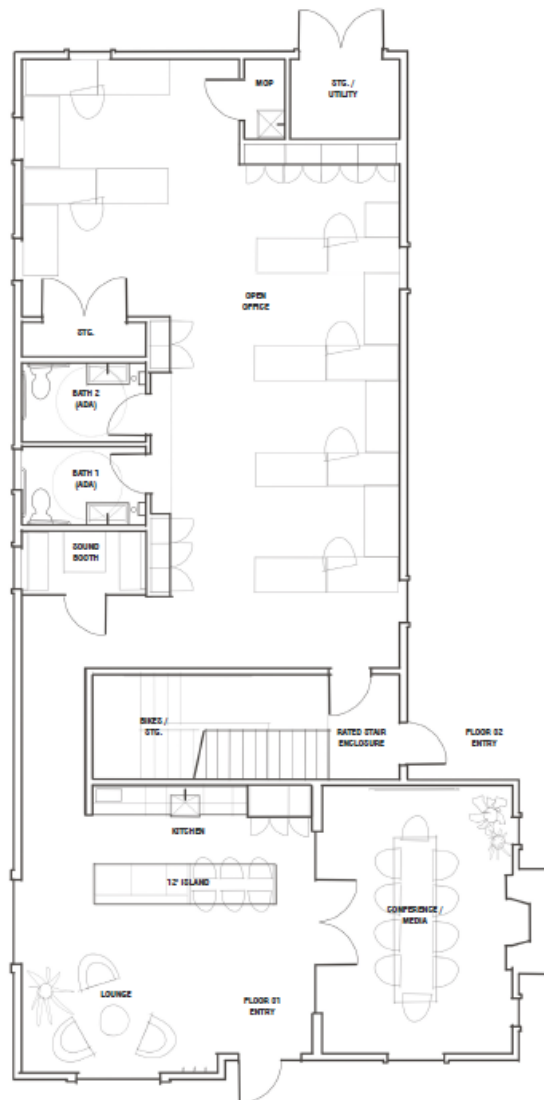


FEATURES

- New construction
- Libbie/Patterson location
- Signage available

FLOORPLAN

FIRST FLOOR
2,290 SF



SECOND FLOOR

LEASED →

SHARED SPACES →

775 USF →



WESTHAMPTON COMMONS ESTABLISHMENTS



Images courtesy of homes.com



RESTAURANTS | BREWERIES



EMPLOYERS



SHOPPING



LOCATION



HORSEPEN RD.

W. BROAD STREET

LIBBIE AVE

STAPLES MILL RD

W. BROAD STREET

THREE CHOPT RD.

MONUMENT AVE.

PATTERSON AVE.

LIBBIE AVE

WILLOW LAWN DR

THREE CHOPT RD.

LIBBIE AVE

PATTERSON AVE.

GROVE AVE.

19,000 VPD

706 LIBBIE AVE

12,000 VPD

ST. CHRISTOPHER'S SCHOOL

BARREL THIEF
WESTWOOD FOUNTAIN
ph

ST. CATHERINE'S SCHOOL

Westhampton Pastry Shop
Grill

POST OFFICE SQUARE
FLEET FEET
PELAGUS
ARIYA SPA THREE TON
FAMILY CHIROPRACTIC CENTERS

WILLOW LAWN
DICK'S SPORTING GOODS
Kroger
Michael's
OLD NAVY
Staples
DSW
CVS pharmacy
FIVE GUYS
J-CREW FACTORY
Jason's deli
VABC
WHICH WICH

LIBBIE PLACE SC
Target
F45
Great Clips
PETSMART
FedEx
AT&T
BARNES & NOBLE

CONEJO
dry bar
PIT AND THE PET

WESTWOOD CLUB

LIBBIE MILL
SHAGBARK
Starbucks
CRAFTED 9ROUND
[solidcore] -chargepoint
burn boot camp
LL Flooring

LIBBIE MILL LIBRARY

FIRST WATCH
THE WATKINS GOLF

Wawa

VIBRA HOSPITAL

Anthem

Kristen's

VILLAGE SC
Publix
CVS pharmacy
ABC
SUBWAY
BELL GREEK
Christian's PIZZA
Blue Cow
GINGER JUICE

Burlington
OfficeMax
ALDI

ZAXBY'S
Arby's

SONIC
TACO BELL

GROVE AVENUE
CAMEO
TASTE
CONTINENTAL
BEDJING
sugar & hive
gelatti celesti

RIVER ROAD SC
ORVIS
Yves Delorme
TALBOTS
AZZURRO
pure barre

COUNTRY CLUB OF VIRGINIA





FOR MORE INFORMATION, CONTACT:

AMY BRODERICK
Senior Vice President
804 344 7189
amy.broderick@thalhimer.com

KATE HOSKO
Vice President
804 344 7169
Kate.hosko@thalhimer.com

Thalhimer Center
11100 W. Broad Street
Glen Allen, VA 23060
thalhimer.com

Independently Owned and Operated / A Member of the Cushman & Wakefield Alliance

Cushman & Wakefield | Thalhimer © 2025. No warranty or representation, express or implied, is made to the accuracy or completeness of the information contained herein, and same is submitted subject to errors, omissions, change of price, rental or other conditions, withdrawal without notice, and to any special listing conditions imposed by the property owner(s). As applicable, we make no representation as to the condition of the property (or properties) in question.



**CUSHMAN &
WAKEFIELD**

THALHIMER