



+1,600 SF AVAILABLE

111 MILL CREEK PARKWAY

CHESAPEAKE, VA 23323

Town Center of Virginia Beach, 222 Central Park Avenue, Suite 1500
Virginia Beach, VA 23462 | thalhimer.com



CHRISTINE KAEMPFE, SIOR
Senior Vice President
757 499 1384
christine.kaempfe@thalhimer.com

Independently Owned and Operated / A Member of the Cushman & Wakefield Alliance

Cushman & Wakefield | Thalhimer © 2025. No warranty or representation, express or implied, is made to the accuracy or completeness of the information contained herein, and same is submitted subject to errors, omissions, change of price, rental or other conditions, withdrawal without notice, and to any special listing conditions imposed by the property owner(s). As applicable, we make no representation as to the condition of the property (or properties) in question.

111 MILL CREEK PARKWAY

Chesapeake, VA 23323

Property Features

Three-story brick building with atrium

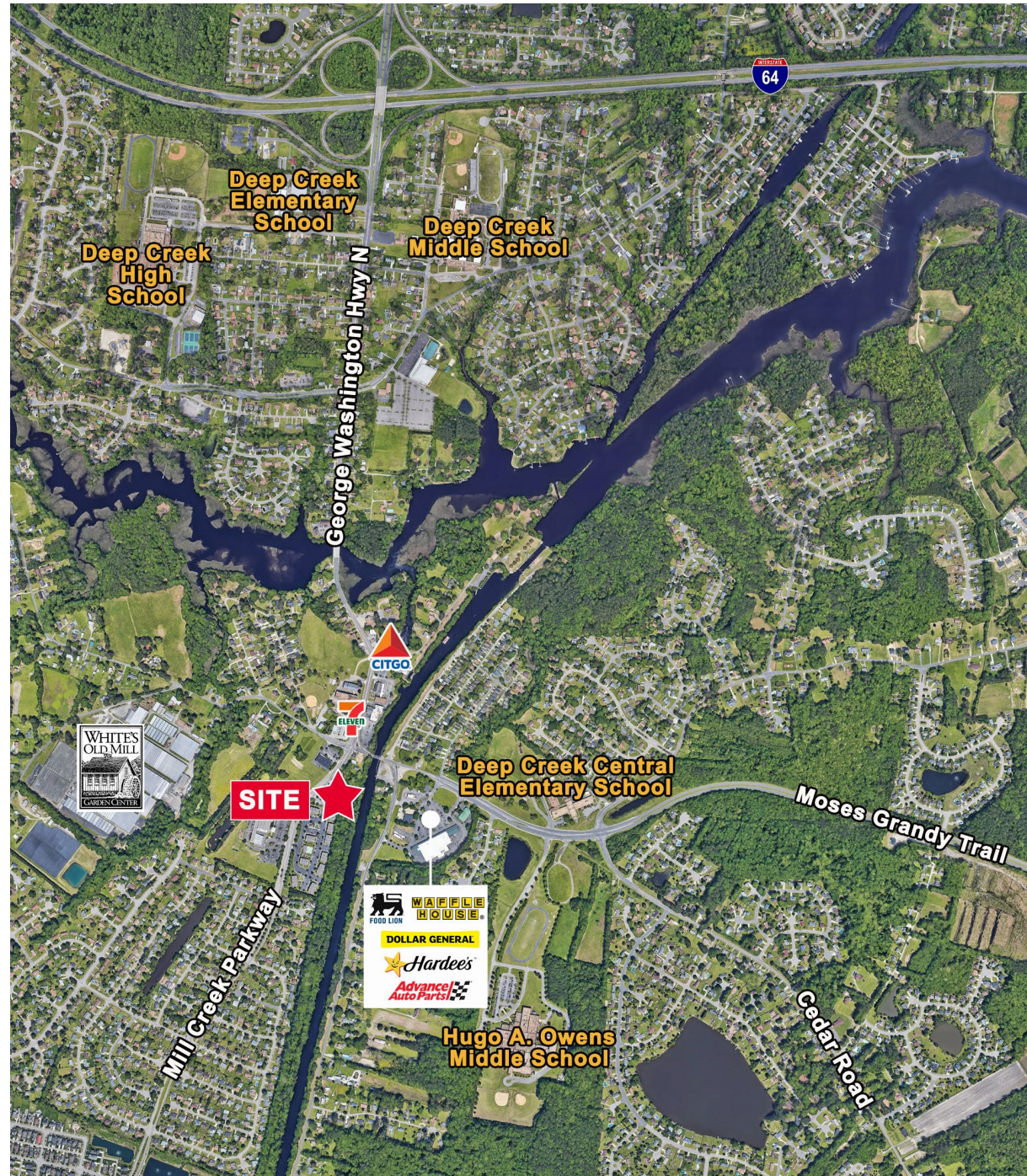
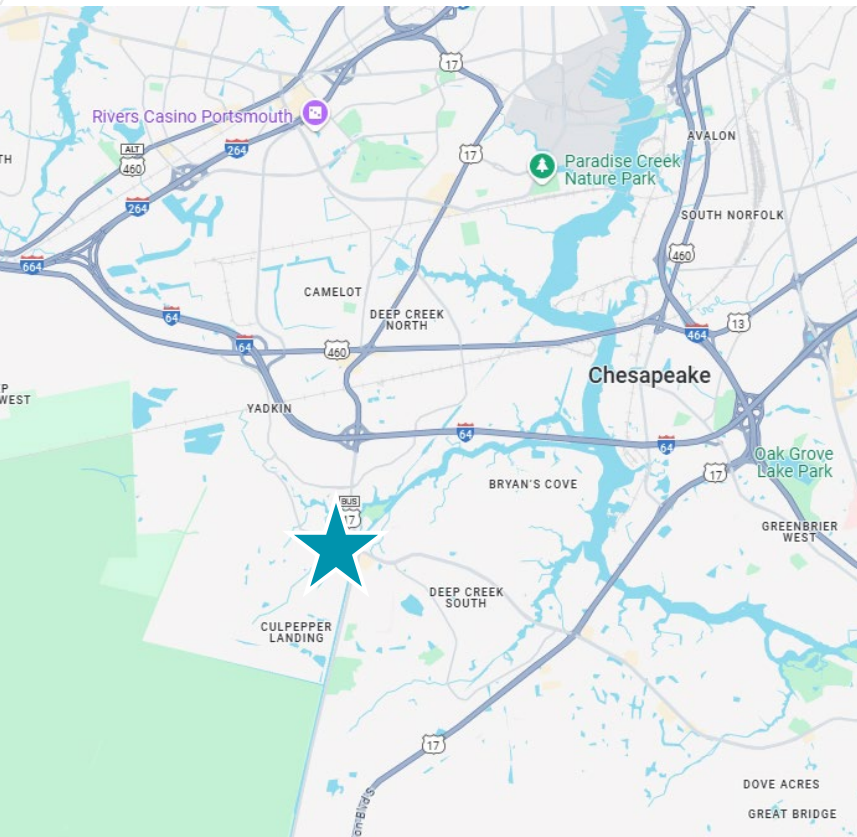
Suite 203 Available - 1,600 SF (former dental practice)

\$18.50 SF, Net of janitorial

Amenities - canopy for loading and unloading passengers

Located in the Deep Creek section of Chesapeake, one of the city's fastest growing boroughs

Easy access to Cedar Road, George Washington Highway and I-64

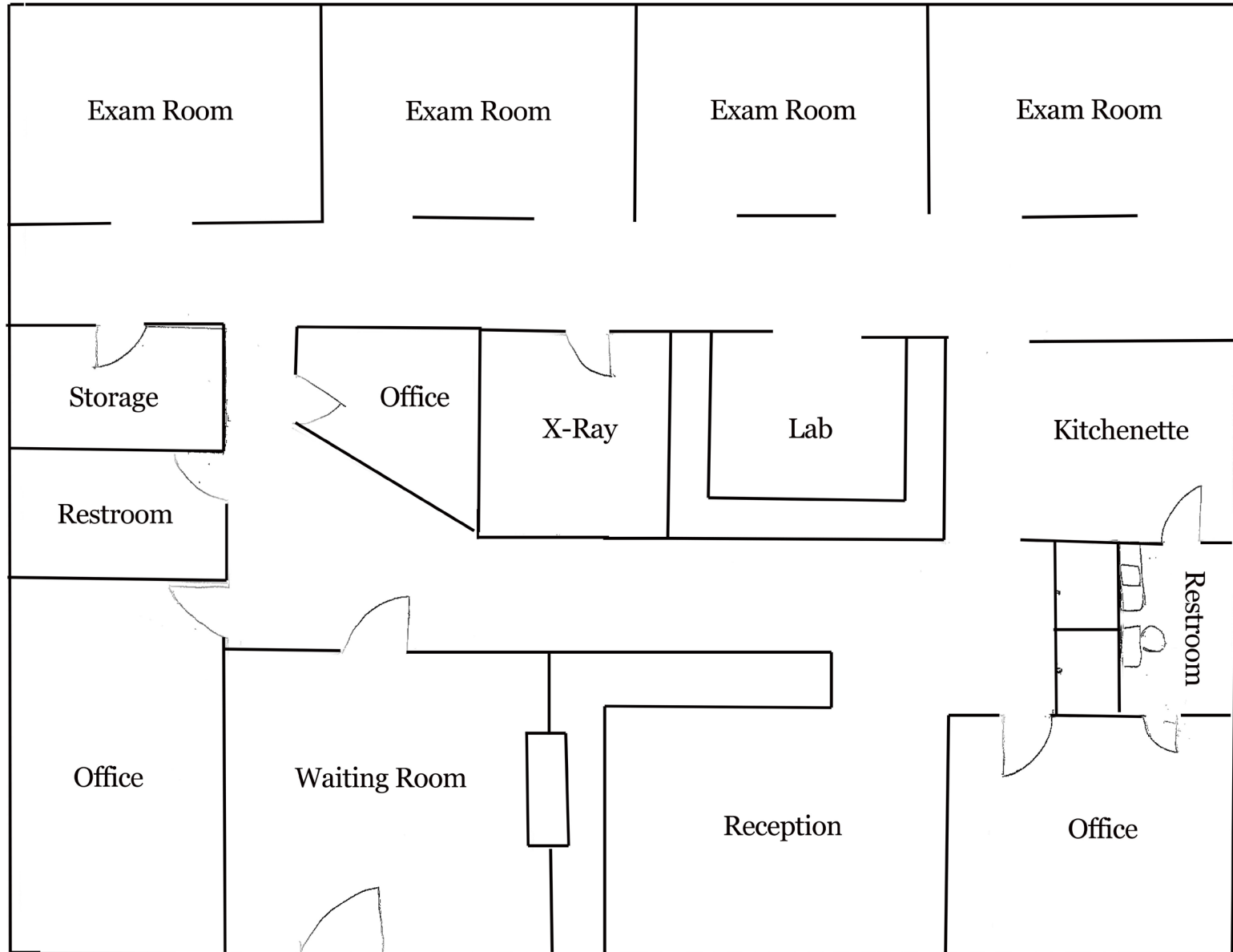


111 MILL CREEK PARKWAY

Chesapeake, VA 23323



THALHIMER



Entrance

NOT TO SCALE