



571 SF STREET LEVEL
RETAIL SPACE
AVAILABLE

ALLIED ARTS BUILDING

725 Church Street
Lynchburg, VA



CUSHMAN &
WAKEFIELD

THALHIMER

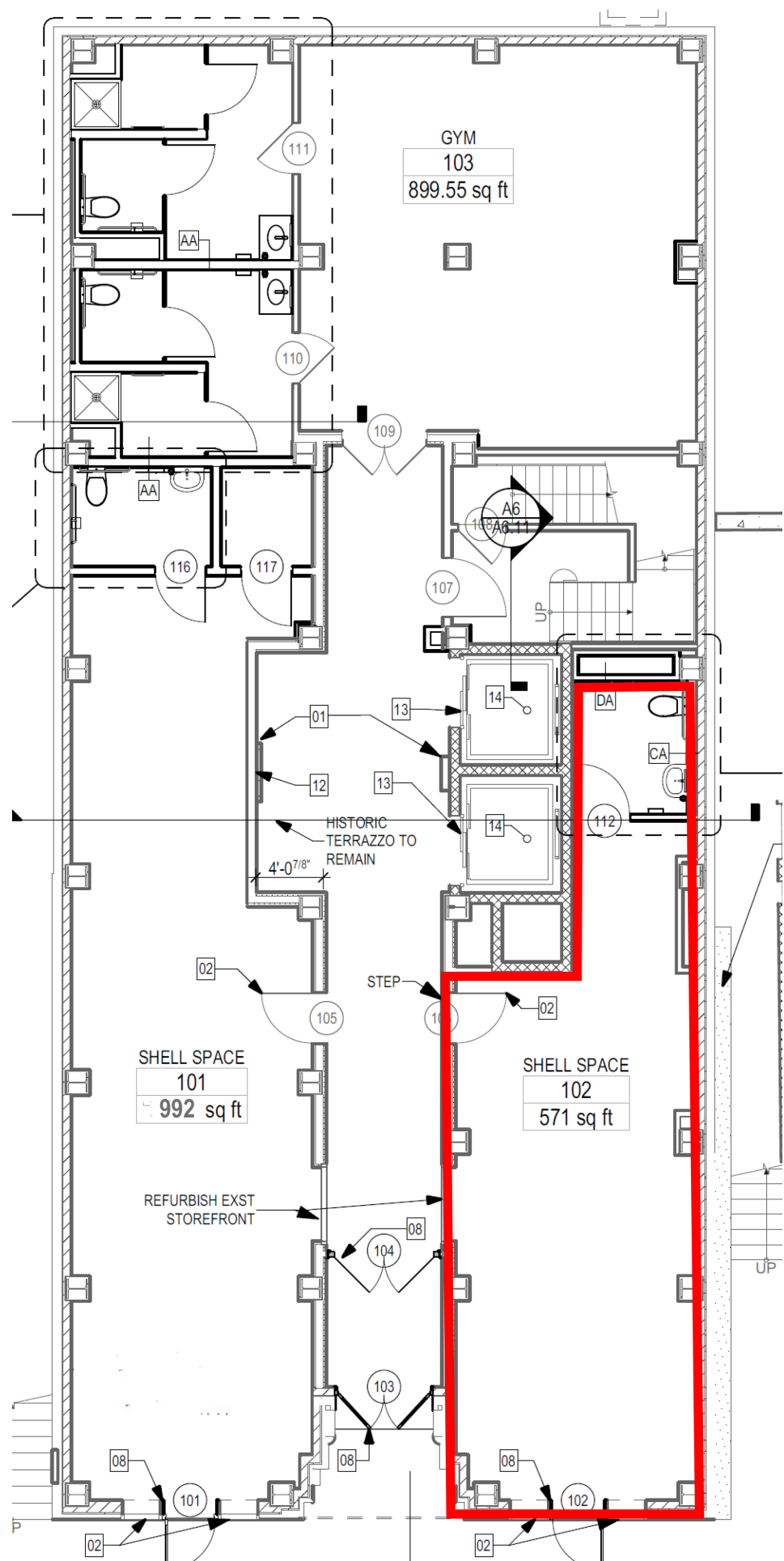


**STREET
LEVEL
RETAIL
SPACE**

PROPERTY FEATURES

- One 571 SF street level retail space available within a completely renovated 59,480 SF commercial mixed-use building - \$950.00 monthly rent
- Ideally suited for retail optical, travel agency, retail apparel-office space ideally suited for many professional firms (legal, finance or insurance)
- On-site parking
- Rental rates are on a full service basis-utilities included
- Centrally located in Downtown Lynchburg directly across the street from the Virginian Hotel
- No restaurants or food preparation retailers
- On-site fitness center available for tenant use

SUITE B - 571 SF



LOCATION



Centrally Located

BUILDING HIGHLIGHTS

571 SF
AVAILABLE

\$950
MONTH

Onsite
PARKING



GEORGE LUPTON
Senior Associate
434 455 2306
george.lupton@thalhimer.com

COFFEE CROSSING
6000 Boonsboro Road, Suite A
Lynchburg, VA 24503
Thalhimer.com



**CUSHMAN &
WAKEFIELD**

THALHIMER

Independently Owned and Operated / A Member of the Cushman & Wakefield Alliance

Cushman & Wakefield | Thalhimer © 2025. No warranty or representation, express or implied, is made to the accuracy or completeness of the information contained herein, and same is submitted subject to errors, omissions, change of price, rental or other conditions, withdrawal without notice, and to any special listing conditions imposed by the property owner(s). As applicable, we make no representation as to the condition of the property (or properties) in question.