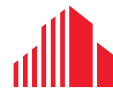




FOR LEASE 8,649 SF

**724 THIMBLE SHOALS BLVD.**

**NEWPORT NEWS**



**CUSHMAN &  
WAKEFIELD**

**THALHIMER**



# 724 THIMBLE SHOALS BLVD. NEWPORT NEWS

## Property Features

The Premises was purpose built for Leidos in 2019 with all new mechanical systems and upgraded finishes throughout. Easy to find location at the signalized intersection of Canon Boulevard and Thimble Shoals Boulevard. Within walking distance to City Center Oyster Point offering dining, retail, entertainment, and hotels.

---

Space Available: 8,649 SF

---

Lease Rate: \$18.00/SF net of janitorial

---

Zoning: C-4

---

Signage: Prominent exterior building signage and visibility

---

Parking: 154 surface level parking spaces

---

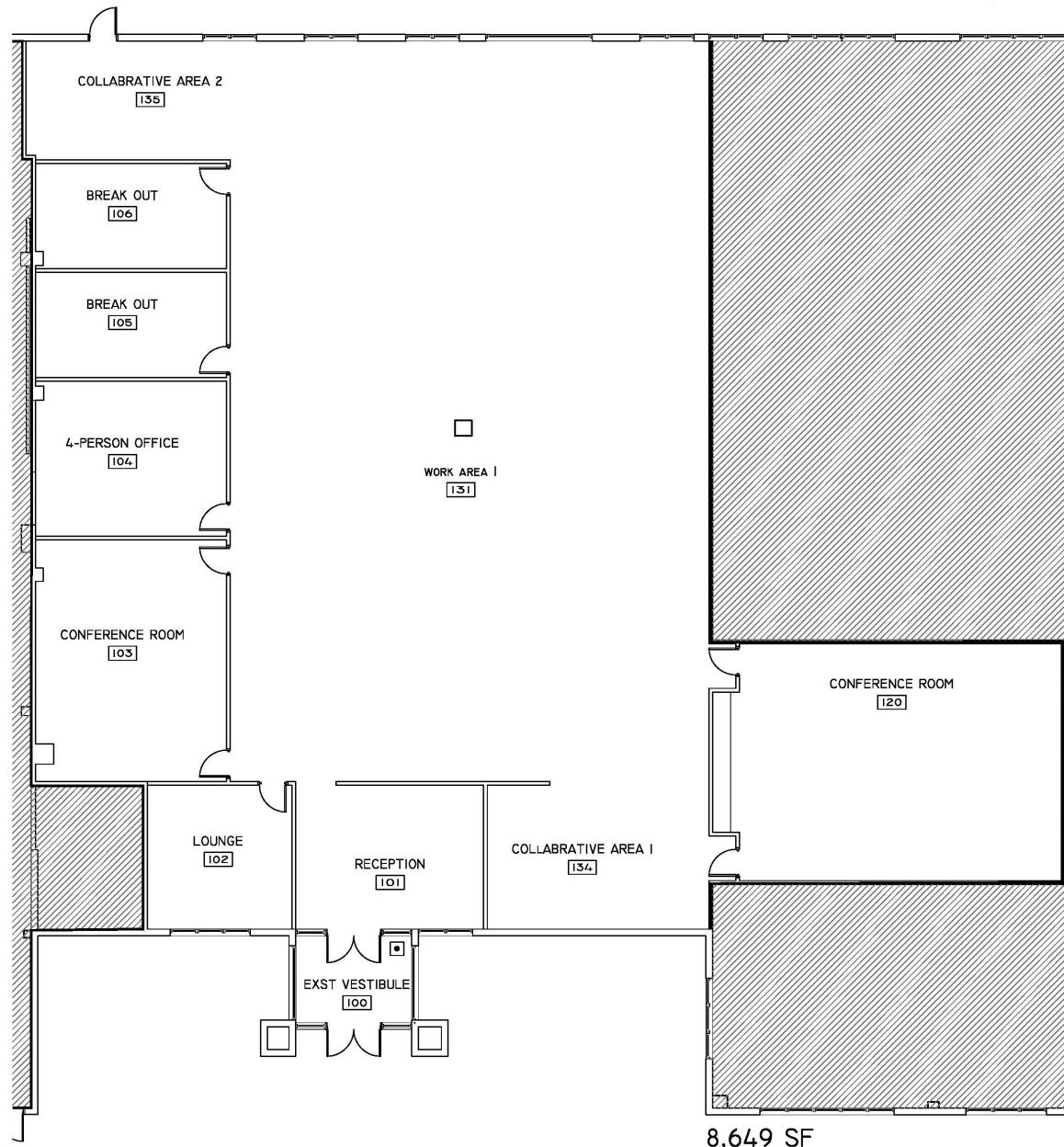
Co-Tenant: Howard Hanna Real Estate

---



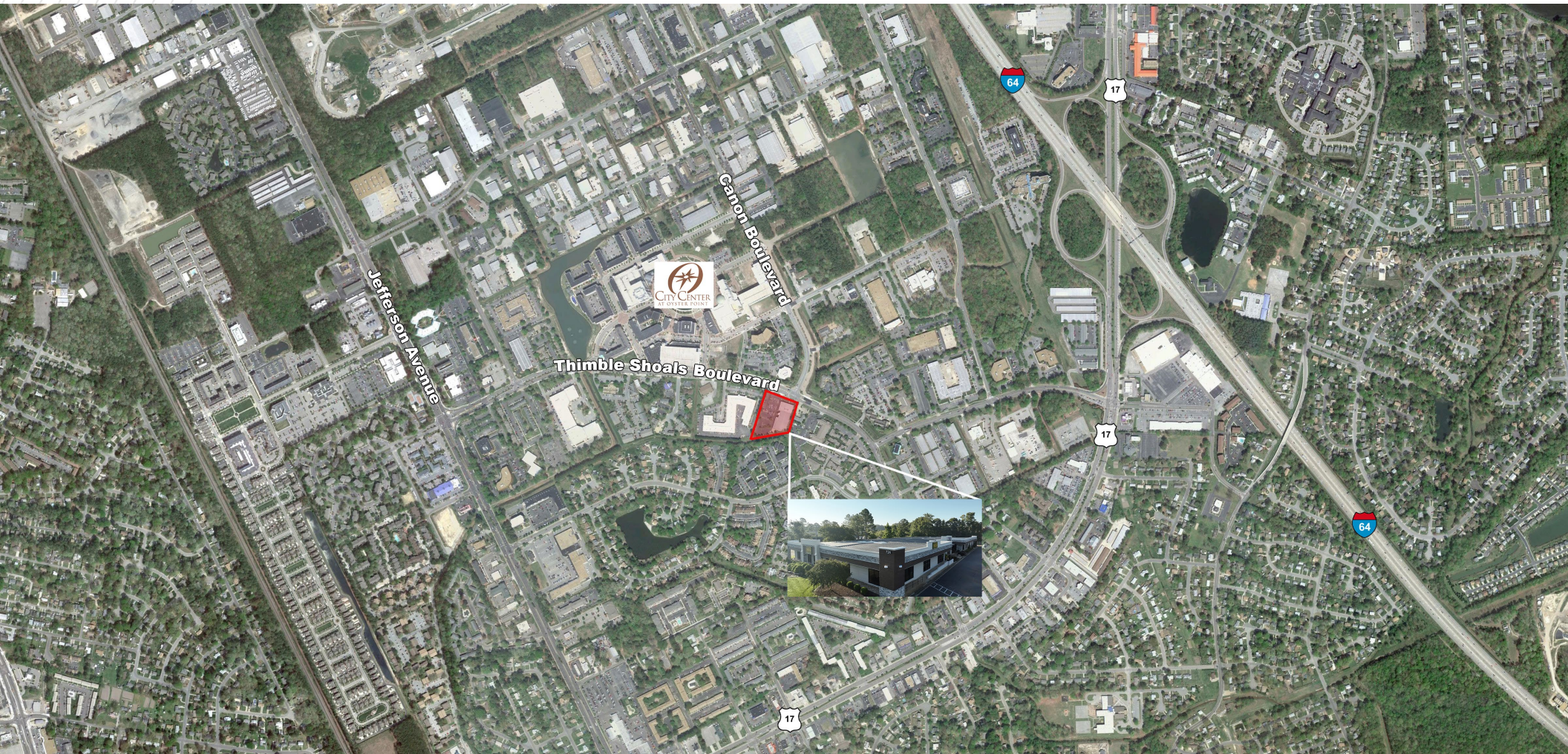
# 724 THIMBLE SHOALS BLVD.

## NEWPORT NEWS





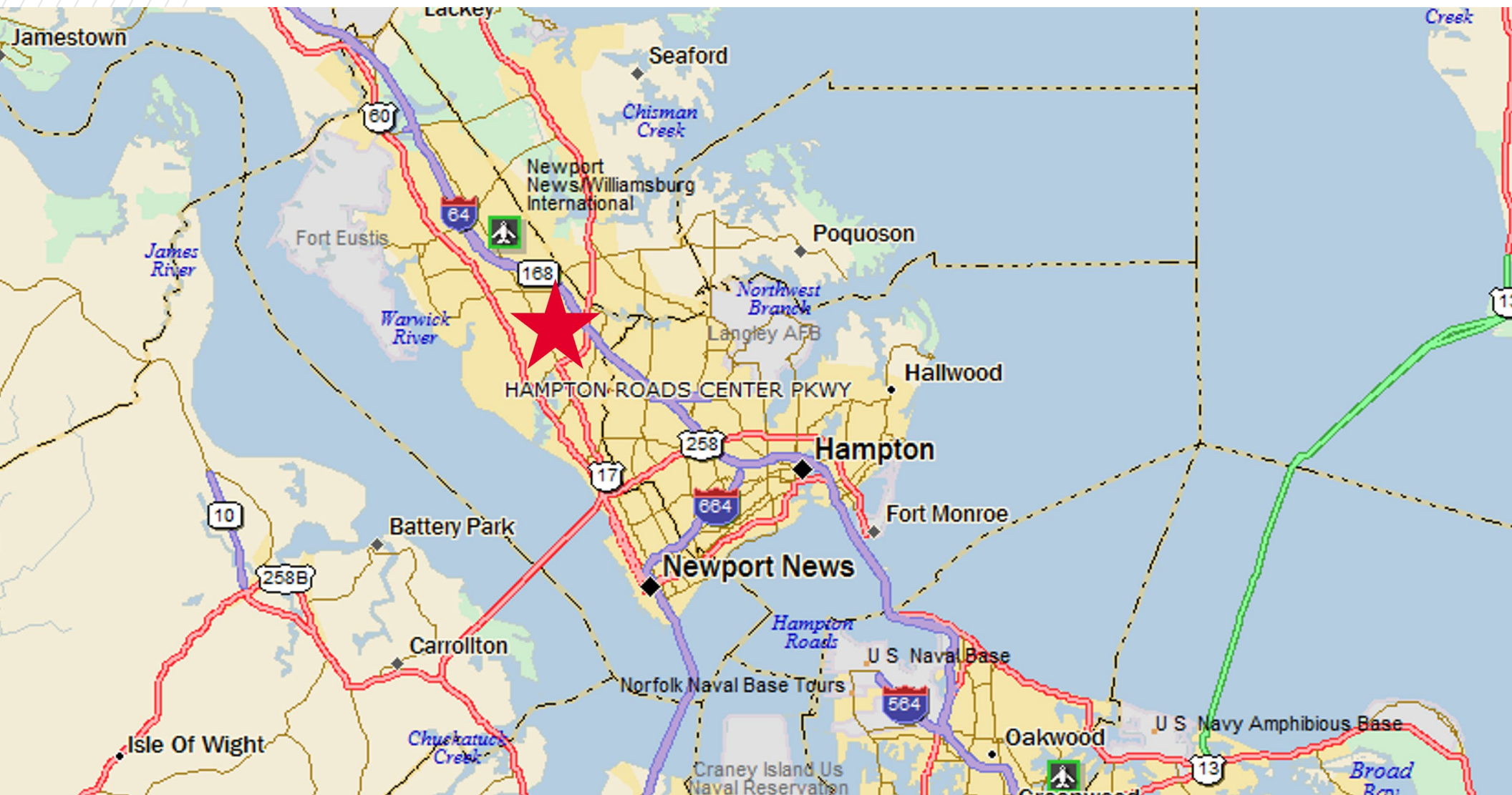
# 724 THIMBLE SHOALS BLVD. NEWPORT NEWS





# 724 THIMBLE SHOALS BLVD.

## NEWPORT NEWS







## FOR MORE INFORMATION, CONTACT:

**ANDY DALLAS, CCIM, SIOR**  
Senior Vice President  
757 873 3661  
[andy.dallas@thalhimer.com](mailto:andy.dallas@thalhimer.com)

**TERESA NETTLES**  
Senior Vice President  
757 873 9268  
[teresa.nettles@thalhimer.com](mailto:teresa.nettles@thalhimer.com)

One BayPort Way  
Suite 100  
Newport News VA 23606  
[thalhimer.com](http://thalhimer.com)

Independently Owned and Operated / A Member of the Cushman & Wakefield Alliance

Cushman & Wakefield | Thalhimer © 2025. No warranty or representation, express or implied, is made to the accuracy or completeness of the information contained herein, and same is submitted subject to errors, omissions, change of price, rental or other conditions, withdrawal without notice, and to any special listing conditions imposed by the property owner(s). As applicable, we make no representation as to the condition of the property (or properties) in question.



**CUSHMAN &  
WAKEFIELD**

**THALHIMER**